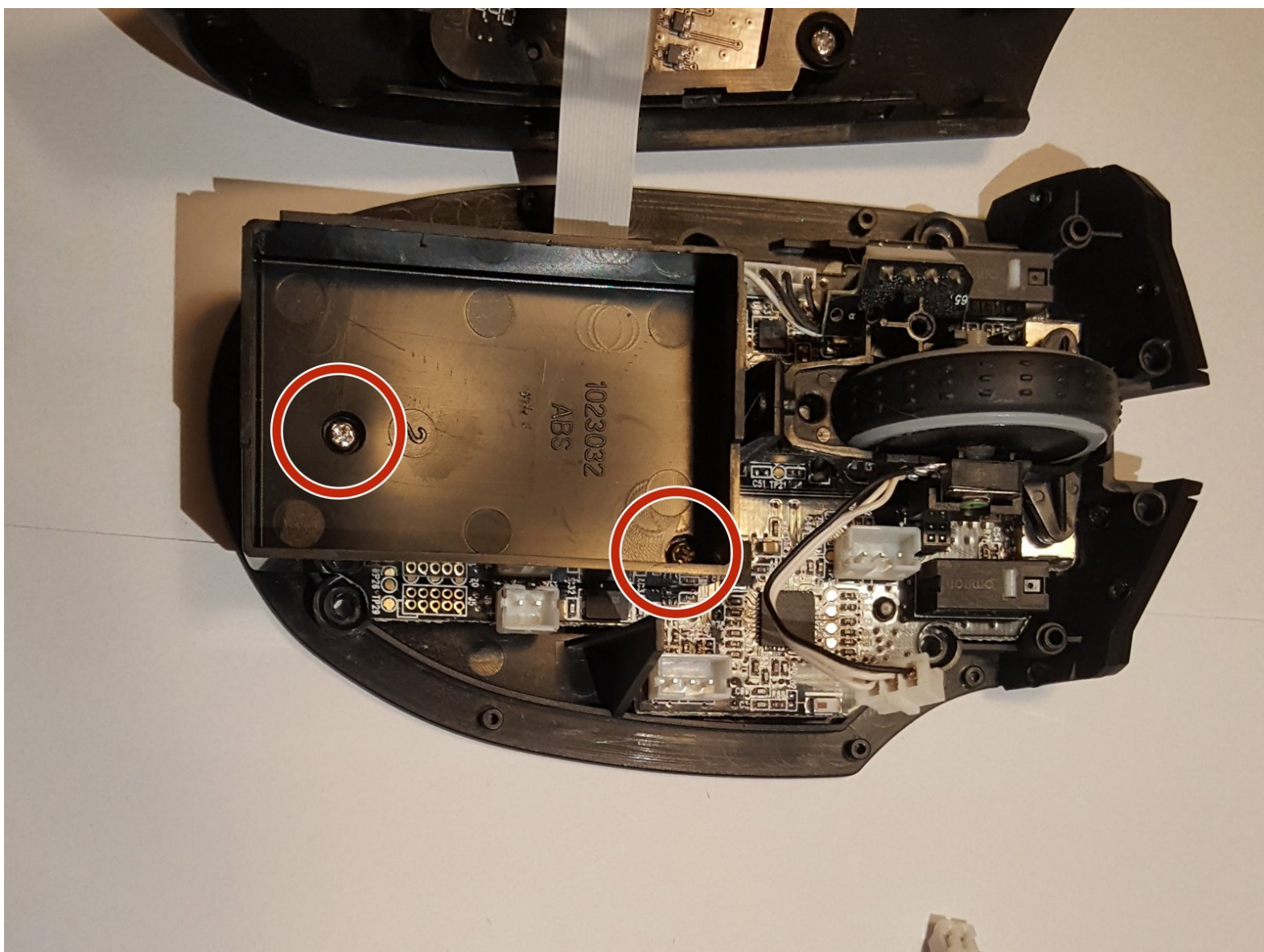




Razer Naga Epic Chroma Tracking Sensor Replacement

This guide will show you how to replace the tracking sensor of the Razer Naga Epic Chroma.

Written By: Jordan Morgan





TOOLS:

- [Soldering Iron](#) (1)
- [Spudger](#) (1)
- [Phillips #00 Screwdriver](#) (1)

Step 1 — Razer Naga Epic Chroma Disassembly



- Remove the teflon tape from the bottom of the mouse with a spudger.

Step 2



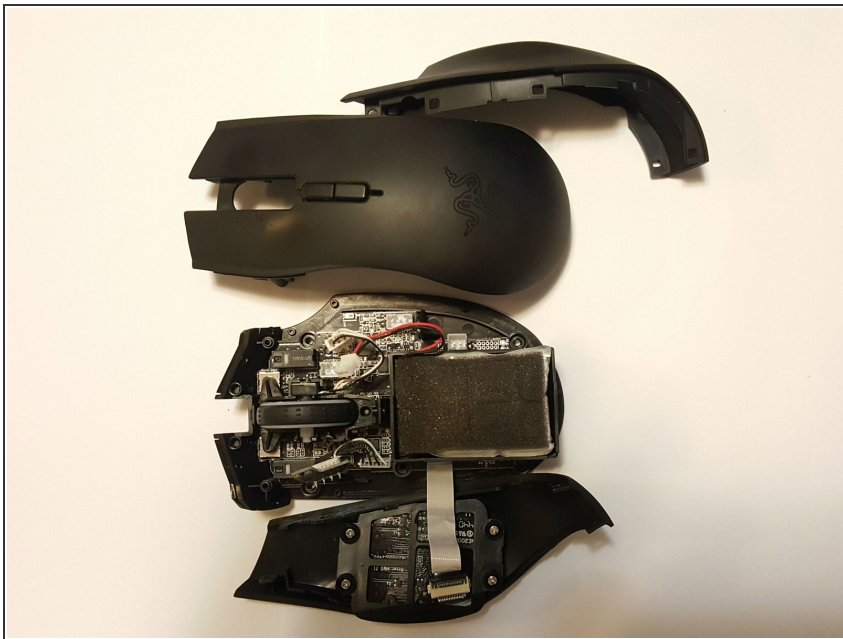
- Remove the four screws with the Phillips head #00 screwdriver.

Step 3



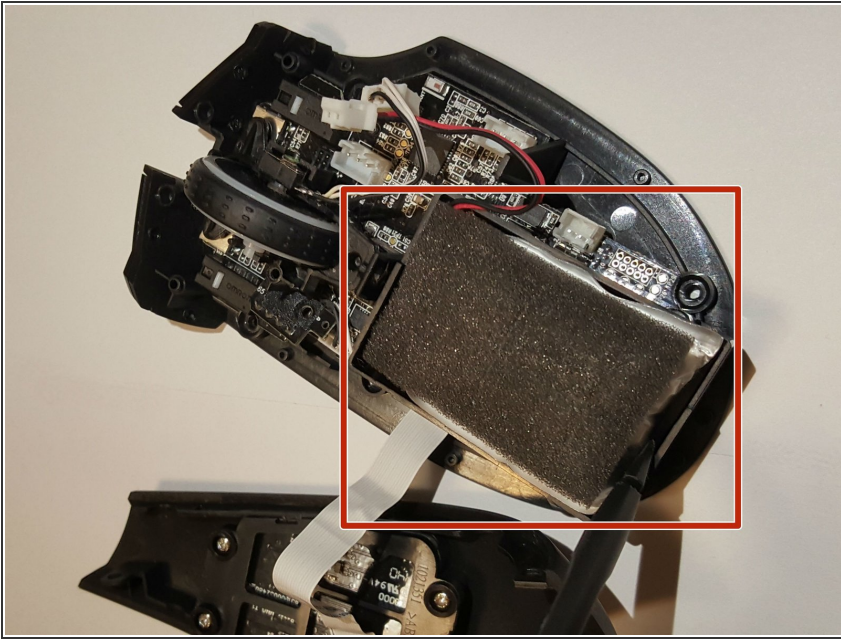
- Gently pull on the top plastic plate of the device and carefully unplug the white cord from the circuit board.

Step 4



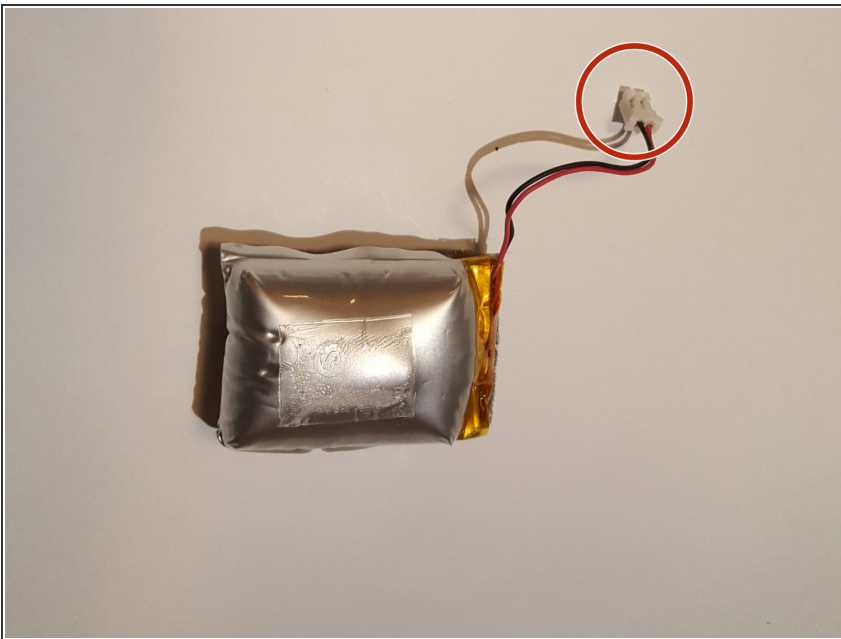
- Gently pull up on the two side plastic plates.

Step 5 — Battery



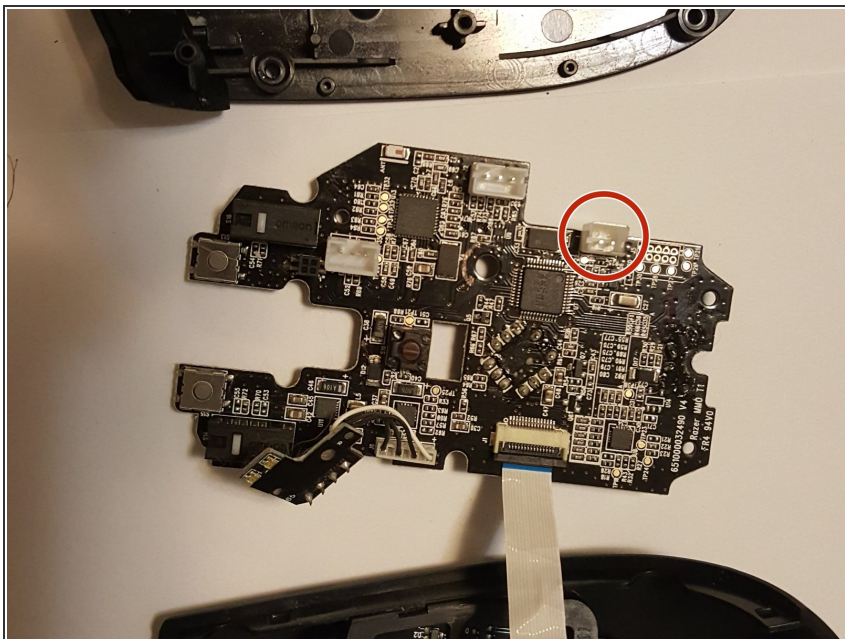
- Take a nylon spudger and gently pry the battery pack from the device.

Step 6



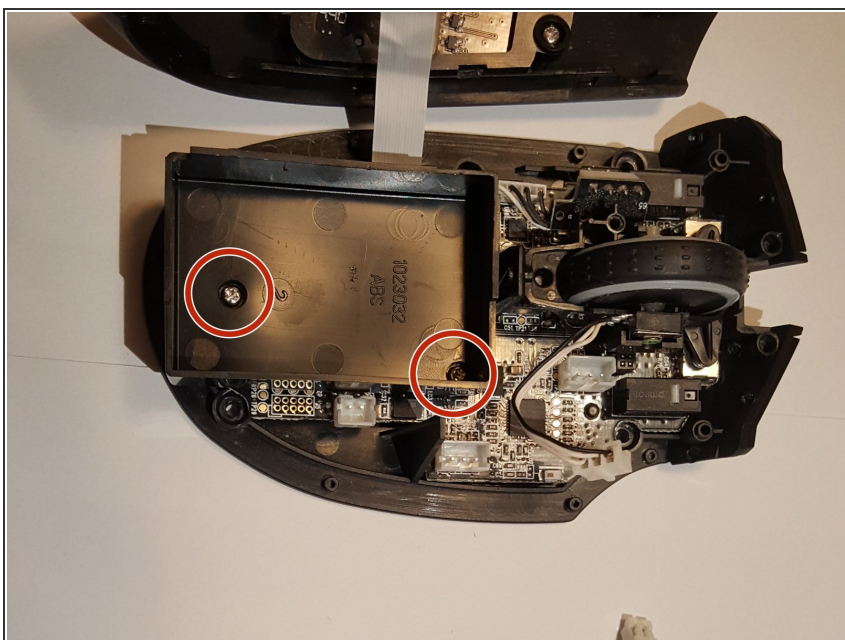
- Unplug the power cord from the circuit board.

Step 7



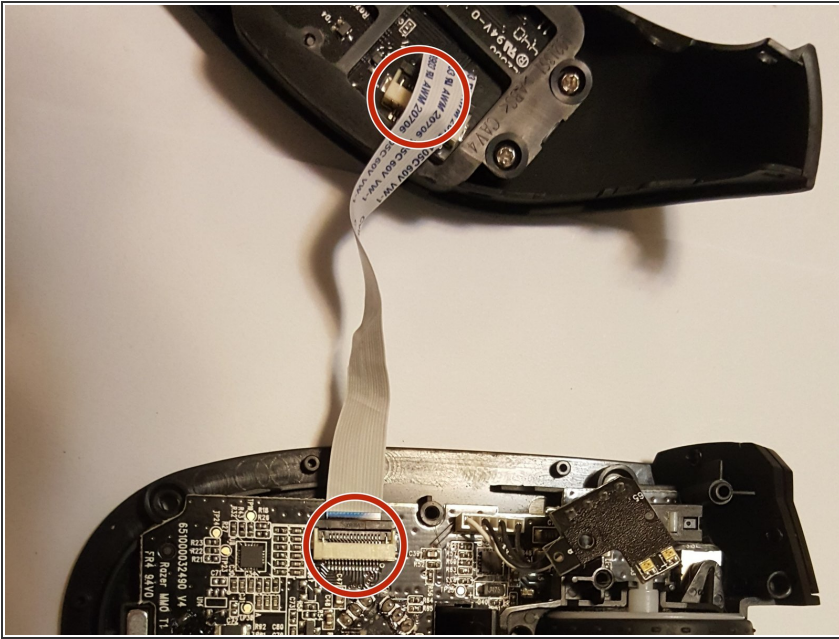
- Plug the cord of the new battery into the socket on the bottom right of the circuit board.

Step 8 — Tracking Sensor



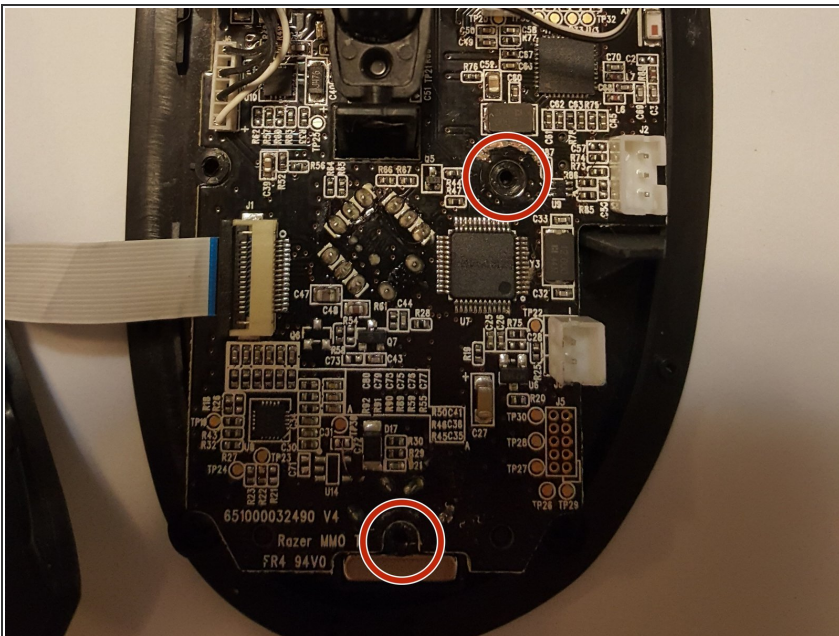
- Remove the two screws holding the battery mount in place and remove the mount from the mouse.

Step 9



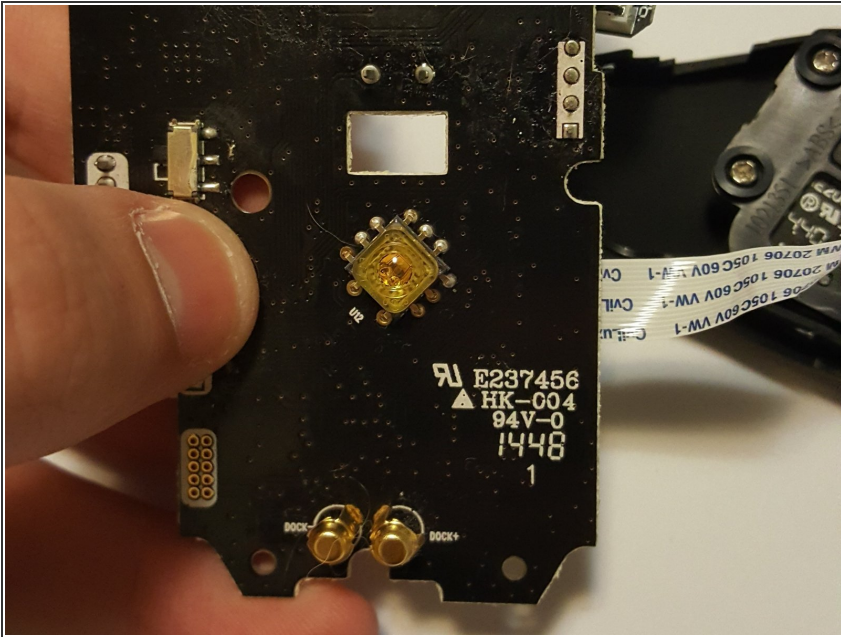
- Disconnect the white connection strip from the white connection port on the circuit board.
- Disconnect the USB cable (the cable is located on the right and center of the circuit board).

Step 10



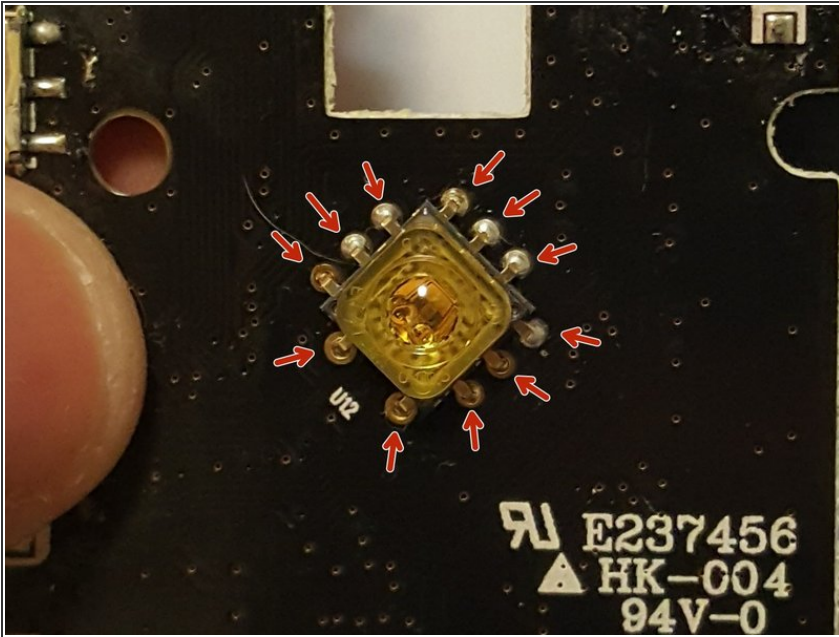
- Remove the two screws that were on either side of the battery mount. This will allow the circuit board to be removed.

Step 11



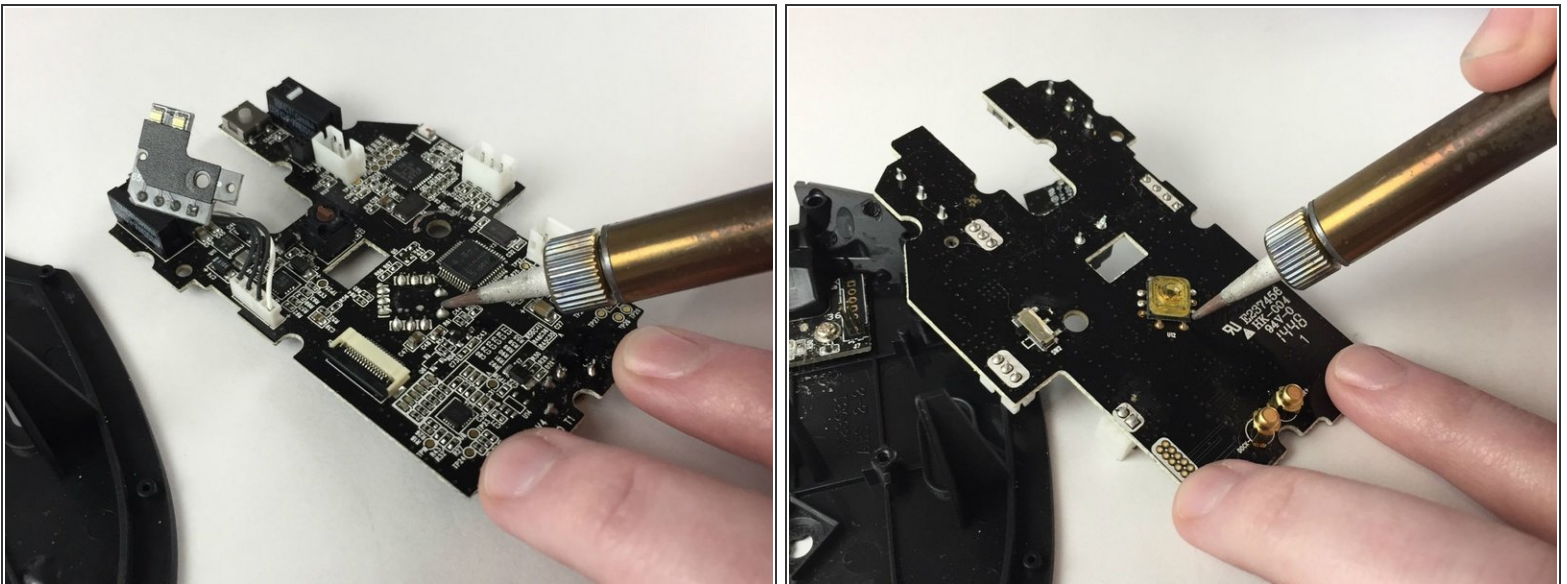
- Remove the circuit board and turn it over to its underside.

Step 12



- Around the yellow sensor, located in the middle of the back of the circuit board, locate the eleven "leads" (soldered connections) surrounding the yellow sensor.

Step 13



- Re-solder all eleven leads to the connection points of the sensor.
- This should fix the problem with the mouse sensor tracking issues.

 For soldering tips, refer to [this guide](#).

To reassemble your device, follow these instructions in reverse order from steps 1-5.