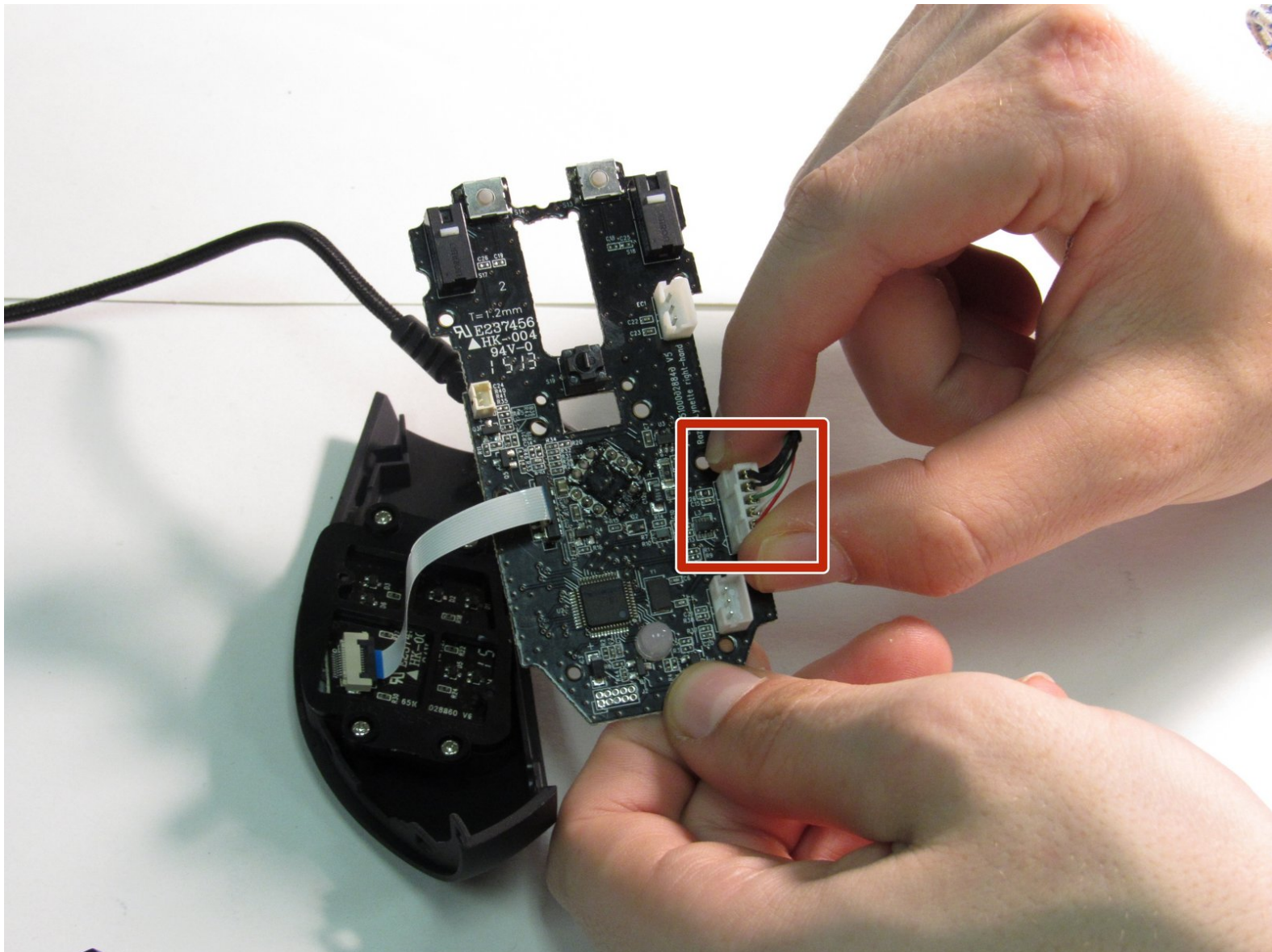




# Razer Naga Expert MMO Cable Replacement

Replace the cable if the cable has loose ends, gets cut or malfunctions in any way.

Written By: Gianni Conti



## INTRODUCTION

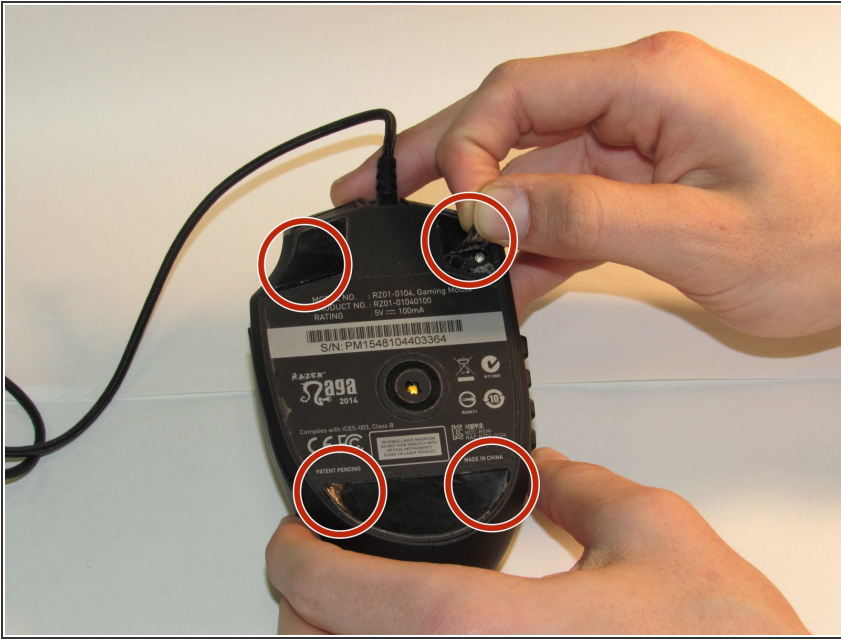
Be sure to be to keep track of the different types of screws used and where they go. Also be careful with the new cable being installed, as too much interaction with it could mess up its internal wiring.

---

### TOOLS:

- [Phillips #00 Screwdriver](#) (1)
  - [Spudger](#) (1)
-

## Step 1 — Top Plastic Shell



- Peel back the two teflon tape from the top corners and the one larger one from the bottom with a spudger.

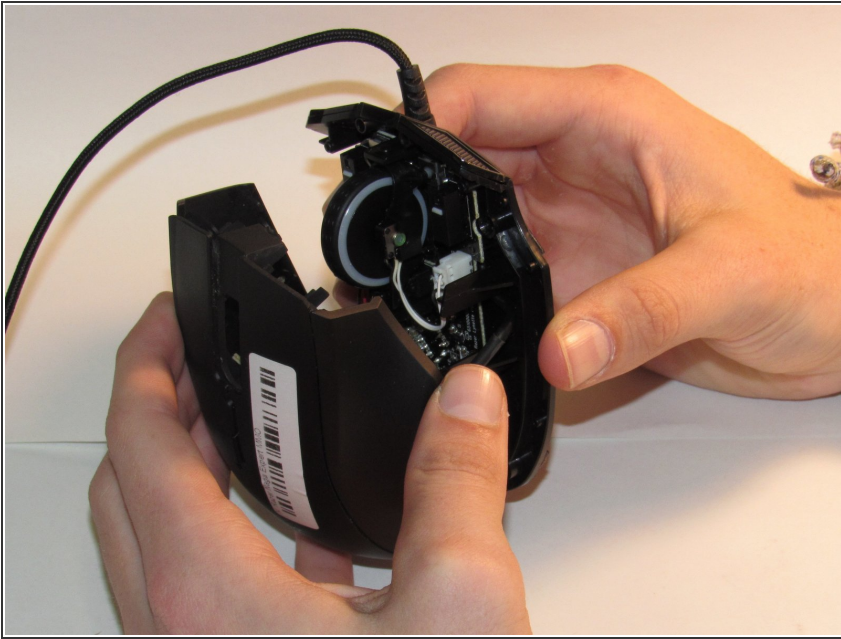
## Step 2



- Remove the four 7mm screws using a Phillips #00 screwdriver.

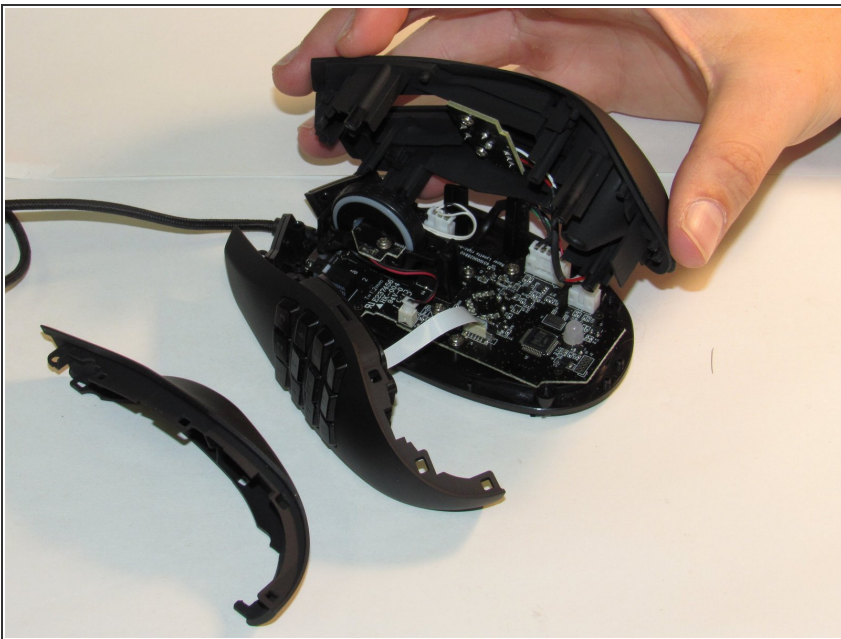


### Step 3



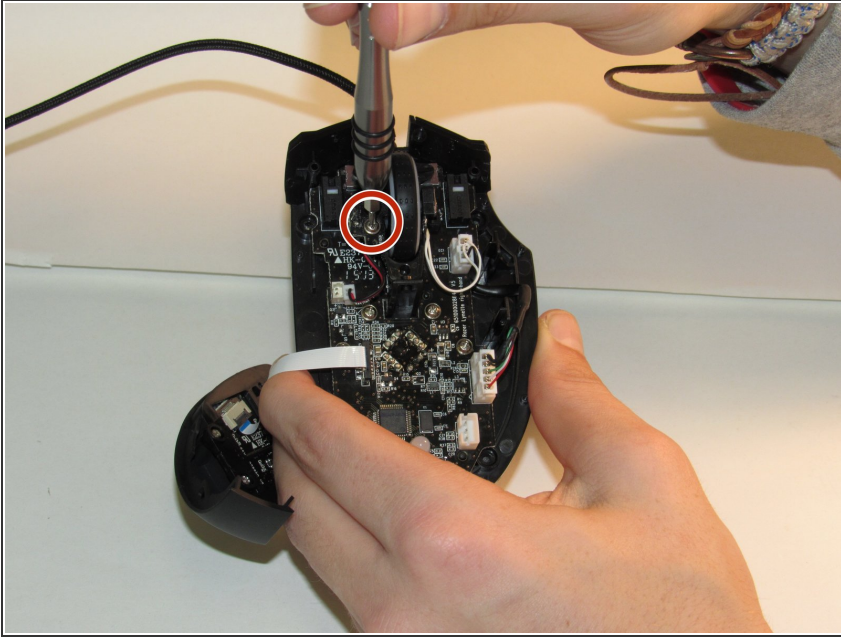
- Gently remove the top plastic plate of the mouse.
- Unplug the white cord from the circuit board.

### Step 4



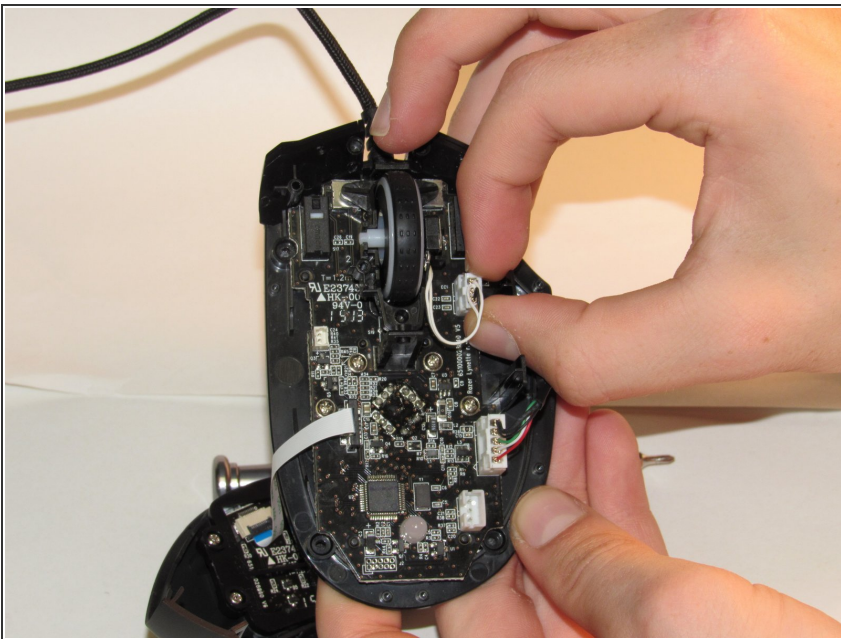
- Lightly pull the two plastic sides of the mouse to remove them.

## Step 5 — Scroll Wheel



- Using a Phillips #00 screwdriver, remove the 5mm screw holding the scroll wheel in place.

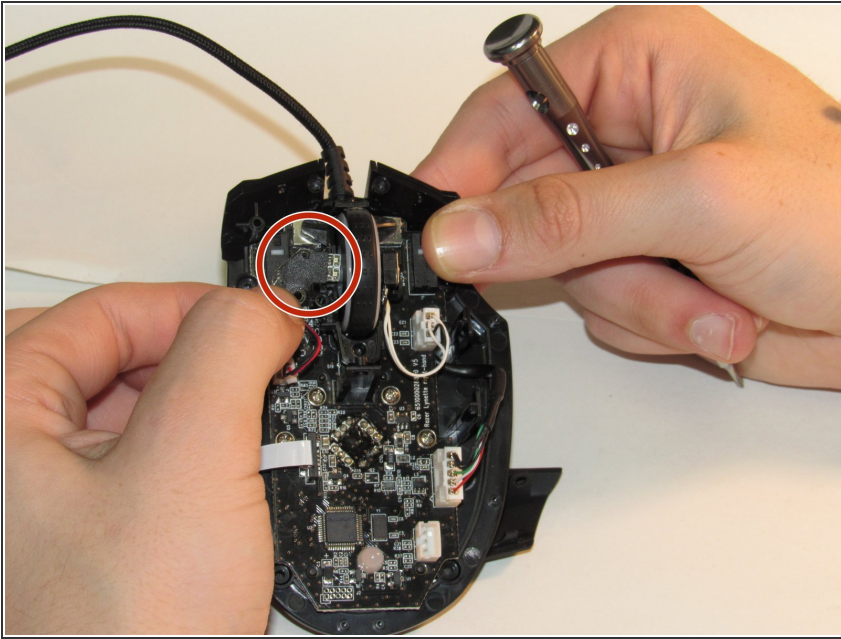
## Step 6



- Unplug the cord that connects the scroll wheel to the motherboard.

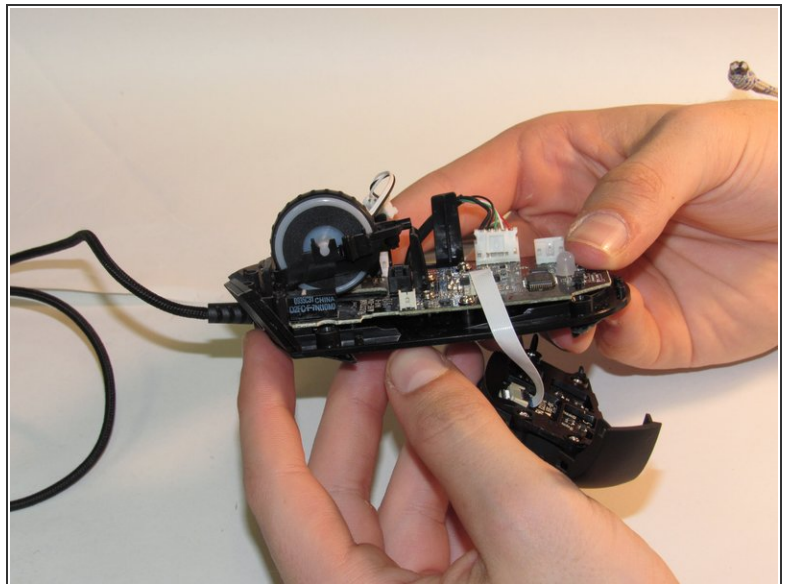
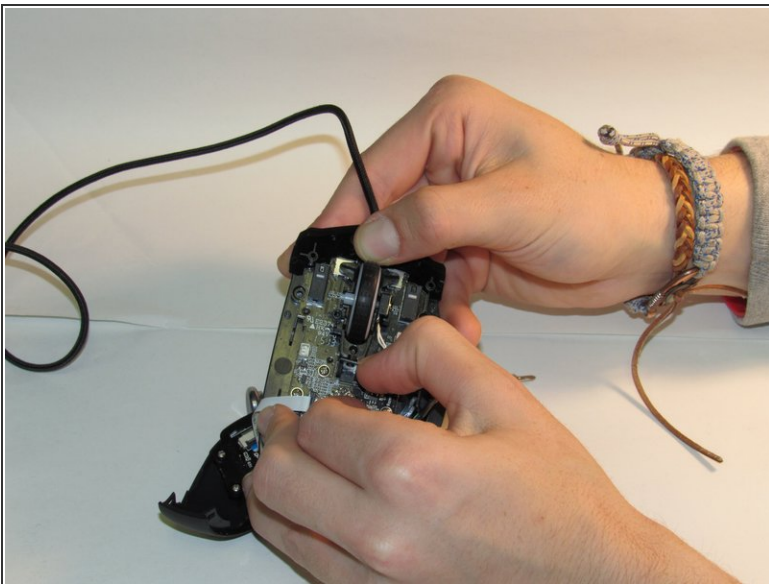


## Step 7



- Slide the chip out of the scroll wheel.

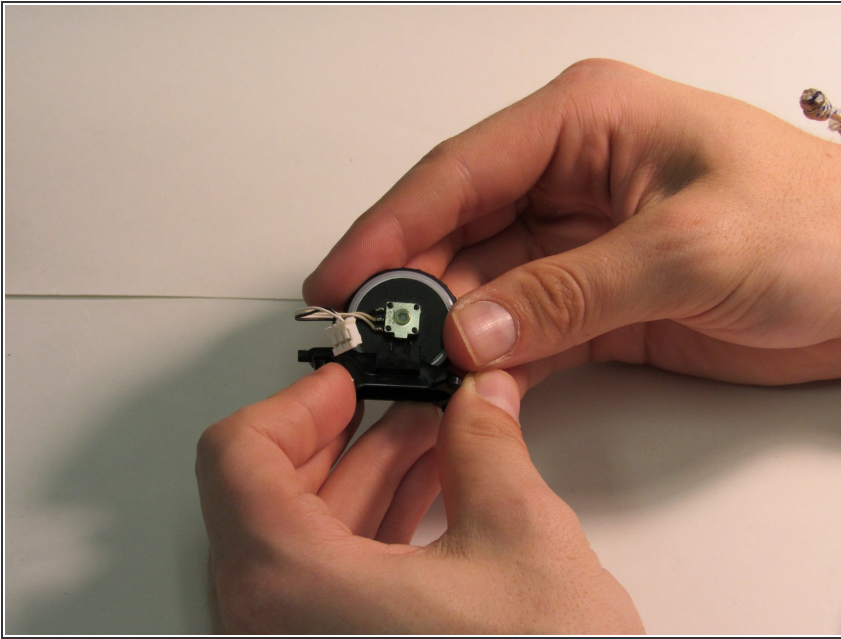
## Step 8



- Gently wiggle the scroll wheel up and back to remove the scroll wheel from the mouse.
- ⚠ Use your fingers to simultaneously push the scroll wheel and its frame forward and pull back on the plastic tab directly behind the scroll wheel until it is loose.
- Use your thumbs to pop the scroll wheel out from its plastic frame.

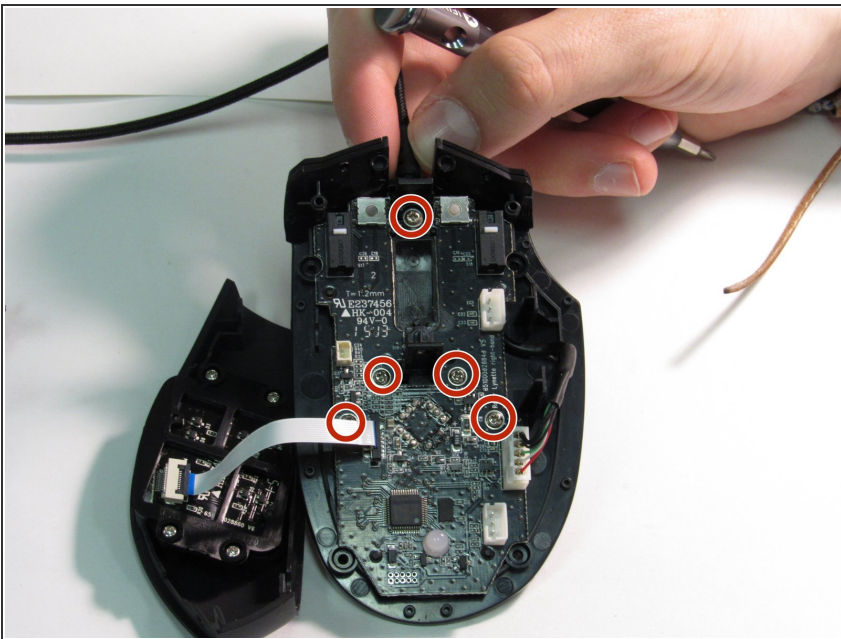
This document was generated on 2020-02-28 09:19:56 AM (MST).

## Step 9



- Place the new scroll wheel in the mount.
- ★ Upon reassembly, be careful to ensure the silver box on the side of the wheel is placed into the frame with the tab facing downward so upon entry into the frame it fits into its slot.

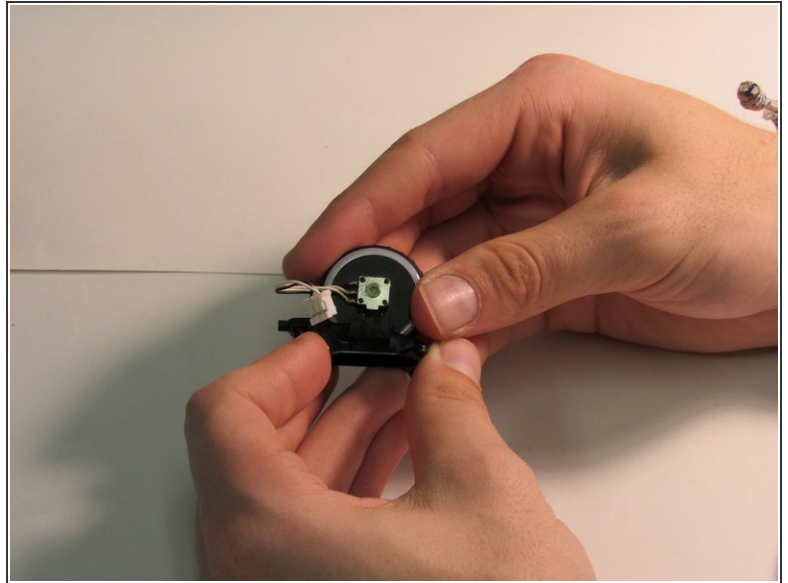
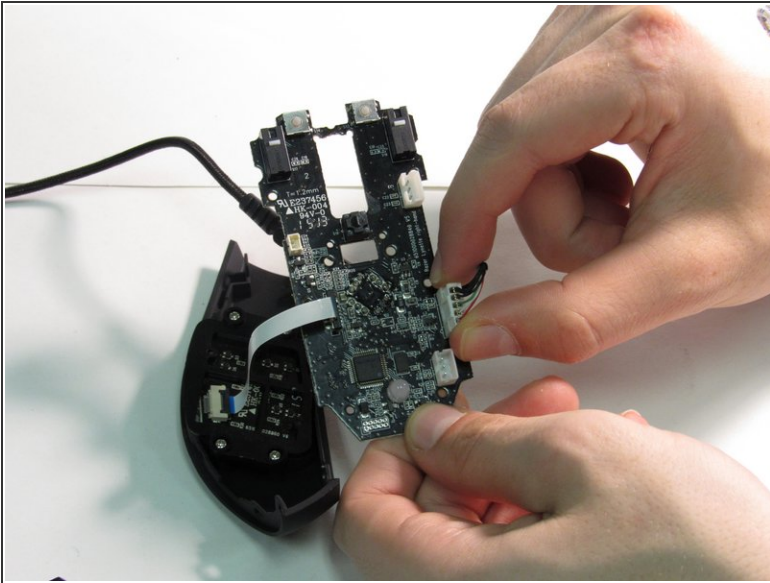
## Step 10 — Motherboard



- Using a Phillips #00 screwdriver, remove all five 5mm screws that connect the motherboard to the main frame.

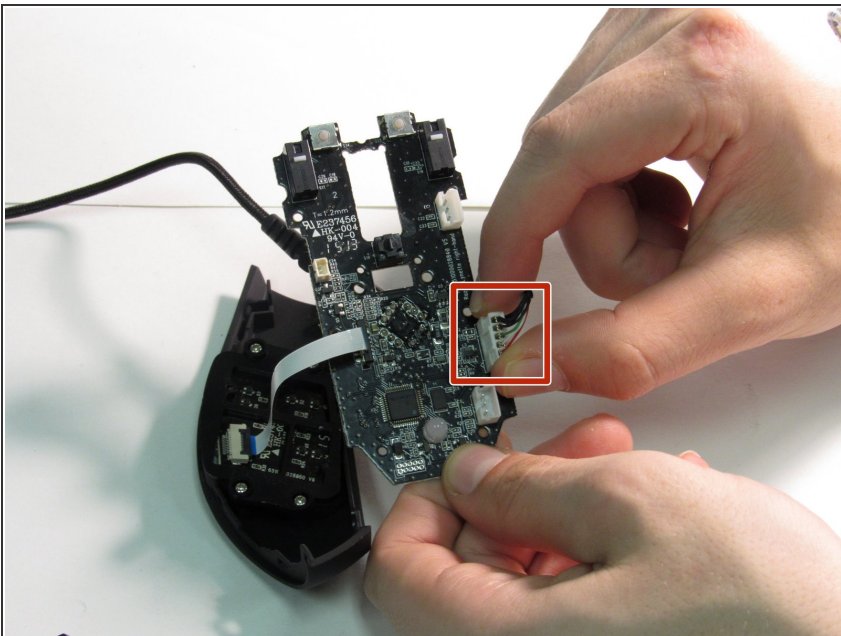


## Step 11



- Place the new motherboard in the mouse.
- When reassembling the mouse, place the loose plastic piece that holds the scroll wheel and wire in place into the rectangular slots in the circuit board.

## Step 12 — Cable



- Once the motherboard is removed, pull the wire out of the plastic grooves on the bottom shell.
- Then to completely detach the cable, unplug its white connection port from the motherboard.



To reassemble your device, follow these instructions in reverse order.