



Rc car remote Teardown

To show how the remote works. Also how the remote makes the rc car work.

Written By: Andrew Campos



INTRODUCTION

Tools you will need are a Phillips screwdriver in a flat head screwdriver. The video shows how to take the two pieces apart, and after that you would be looking at the motherboard. This is how it works. When we push the control, the transmitter sends a specific number of electrical pulses corresponding to that action through the air. The transmitter has its own power source, usually in the form of a 9-volt battery. Without the battery, the transmitter will not be able to send the radiowaves to the receiver. Once the RC toy receives the radio waves, the motors kick into life to cause a specific action to occur. The power source sends power to all working parts, including the motor. The transmitter enables control through radio waves and the receiver activates the motors. When we press a button on the transmitter to make the RC toy go forward or backward, a pair of electrical contacts touch. Receiver identifies signals, sends it to circuit. Circuit board translates the number of electrical pulses (signals) into action. Full-function controllers have six controls and these works through following the pulse sequences:

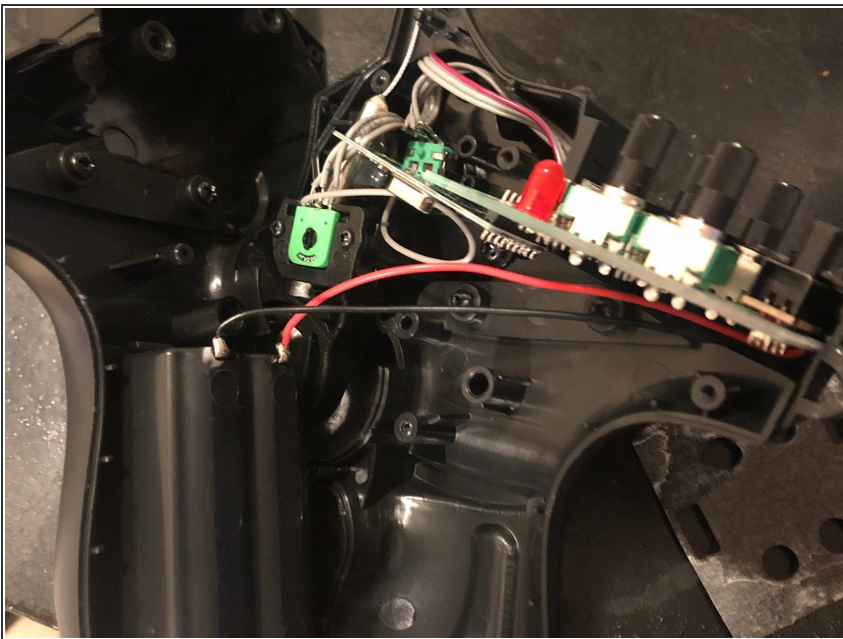
1. Forward: 16 pulses
2. Reverse: 40 pulses
3. Forward left: 28 pulses
4. Forward right: 34 pulses
5. Reverse left: 52 pulses
6. Reverse right: 46 pulses

Step 1 — Rc car remote Teardown



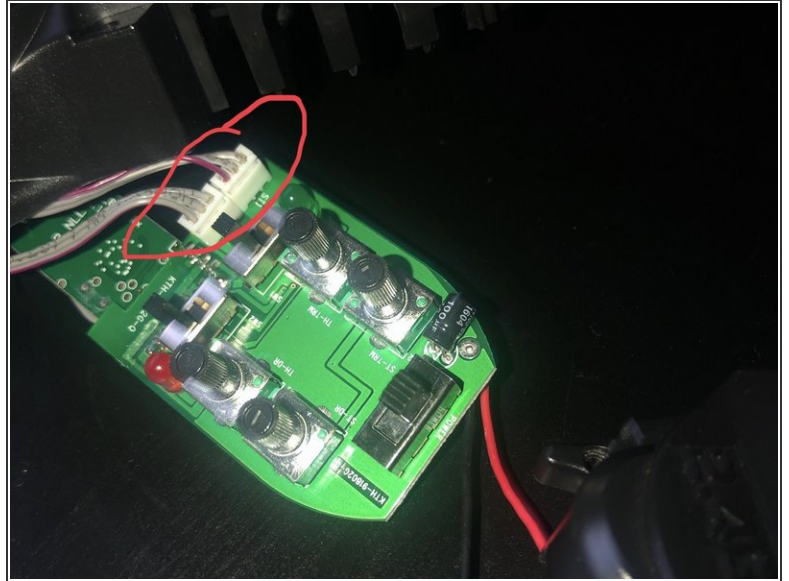
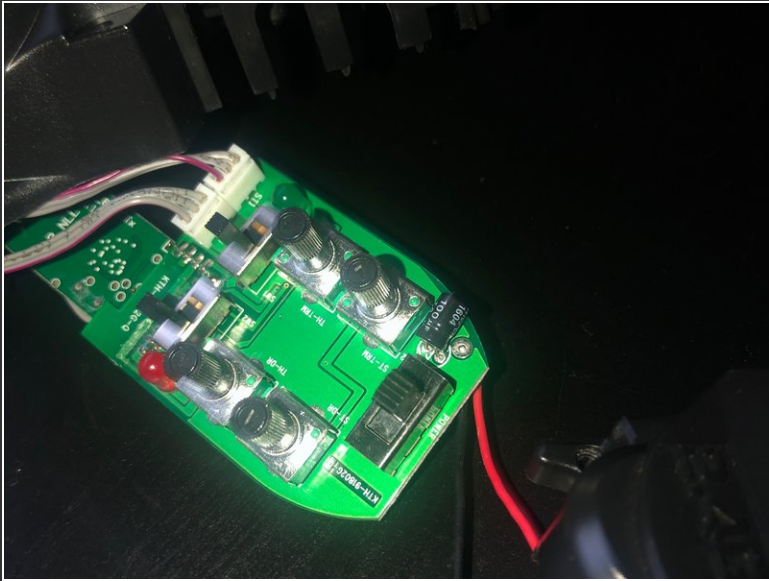
- Unscrew all the screws using the Phillips screwdriver.

Step 2



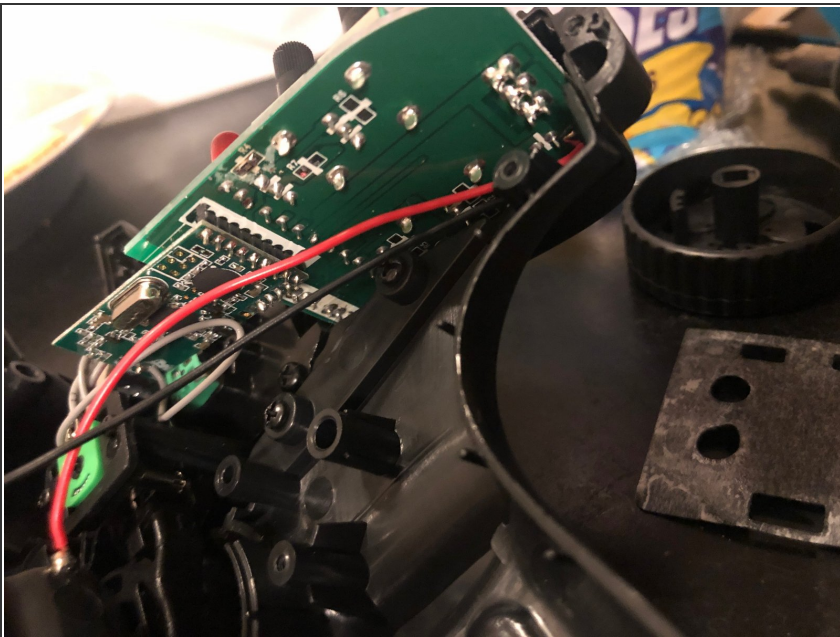
- Use the flathead screwdriver to pop open the two pieces

Step 3



- Take the wire on the top of the motherboard off.

Step 4



- All done just be careful so u don't take the black or red wire off because you would have to Souter it back on.

To reassemble your device, follow these instructions in reverse order.