



Rear Turn Signal Bulb Replacement

Replacing the right rear turn signal bulb. Left and right are identical

Written By: oldturkey03





TOOLS:

- [Flathead Screwdriver](#) (1)
 - [Slip Joint Pliers](#) (1)
-

Step 1 — Rear Turn Signal Bulb



- The stop/turn signal bulb is located in the outer rear lamp unit that is secured at the rear of each quarter panel
- Open the tail gate and locate the two fasteners holding the light assembly to the quarter panel.
- Locate the notches in the outer ring of the fasteners. Those are to facilitate the use of a screw driver to remove the fasteners.

Step 2



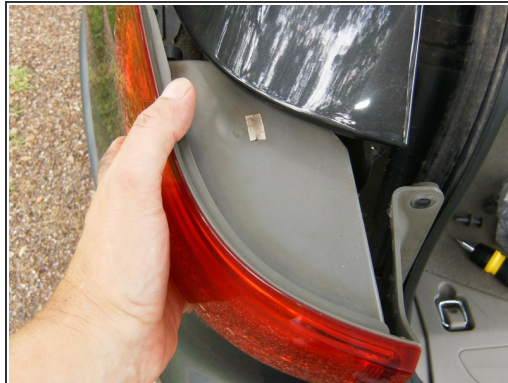
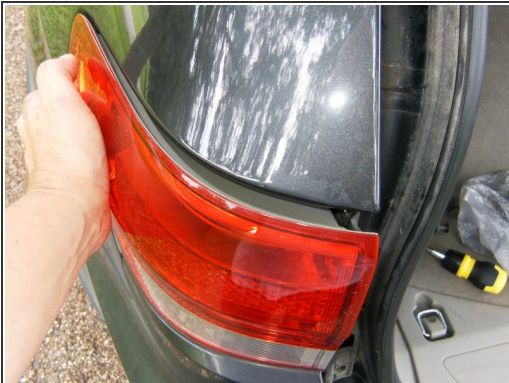
- Insert a flathead screwdriver or similar tool and pry out the center of the fastener
- A pair of pliers, or similar tool, can be used to get a better hold on the fastener
- Completely remove the fastener

Step 3



- Proceed the same way with the bottom fastener. Pry out the center.
- Use pliers or similar tool to pull the fastener
- Completely remove fastener

Step 4



- The tail light assembly is still held in place by two guide pegs. Gently pull the complete assembly toward the rear of the vehicle to unseat the pegs.
- Fully remove the tail light assembly
- The assembly can rest on the top of the rear bumper. The Stop/Turn signal bulb is the larger one of the two bulb fixtures.

Step 5



- Remove the bulb socket by turning it about 1/4 turn in a counter clockwise direction
- Remove the socket from the light assembly
- Remove the bulb from the socket by pulling it straight out.

Step 6



- Replace the burned out bulb with a new type 3057 dual filament bulb

To reassemble your device, follow these instructions in reverse order.