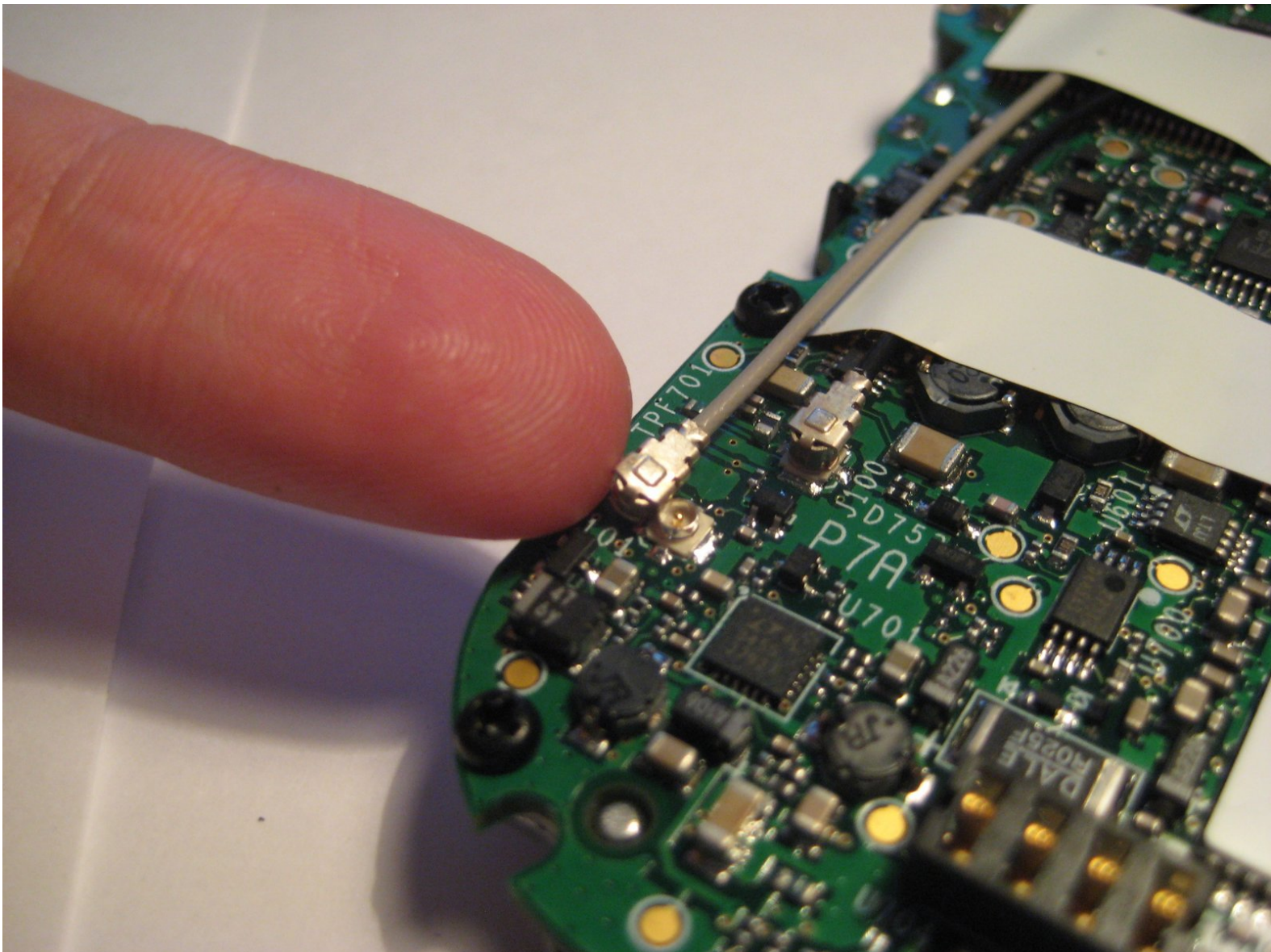




# Reattaching Delphi MyFi XM2GO Antenna Connectors

This guide details an internal antenna connector check for the U.FL connectors on the Delphi XM2GO.

Written By: RoNique Staley





## TOOLS:

- [T6 Torx Screwdriver](#) (1)
-

## Step 1 — Removing Delphi MyFi XM2GO Battery Cover



- Turn over the Delphi MyFi XM2GO Device on its back to start the cover-removal process.

## Step 2



- Locate the large button on the top back of the device.
- Press this button at the top while making a firm grip on the battery cover.
- As the button is pressed, move the cover towards the bottom of the device.
- The battery removal tab may pop up during the cover removal process.



### Step 3 — Removing Delphi MyFi XM2GO Battery



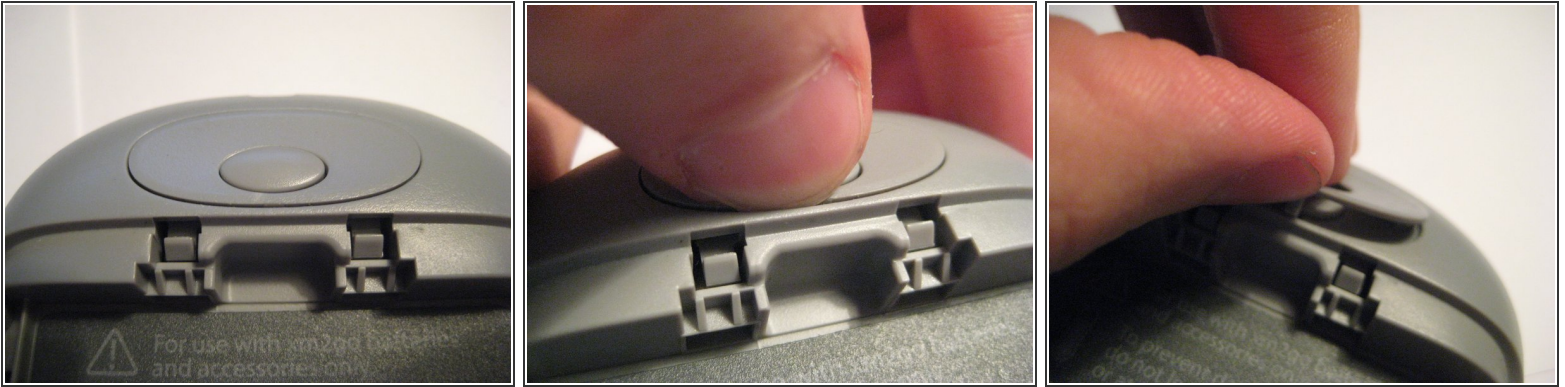
- Holding the device, grab the tab with thumb and index finger.
- Pull down on the tab to move the battery block a few millimeters towards the bottom of the device to unlock the latch at the top.
- After the latch at the top is disengaged, pivot the battery away from the back and the battery will be free.

### Step 4 — Removing Delphi MyFi XM2GO Logic Board



- locate the four hex screws on the bottom of the device.
- Use a T6 hex bit from the iFixit precision screwdriver set to remove the four screws.

## Step 5



- To remove the next two T6 screws, locate the button at the top of the back of the device.
- Around the button, there is a cover that protects the two screws.
- To remove the cover insert a flathead screwdriver or thumb nail and lift up until cover is removed.

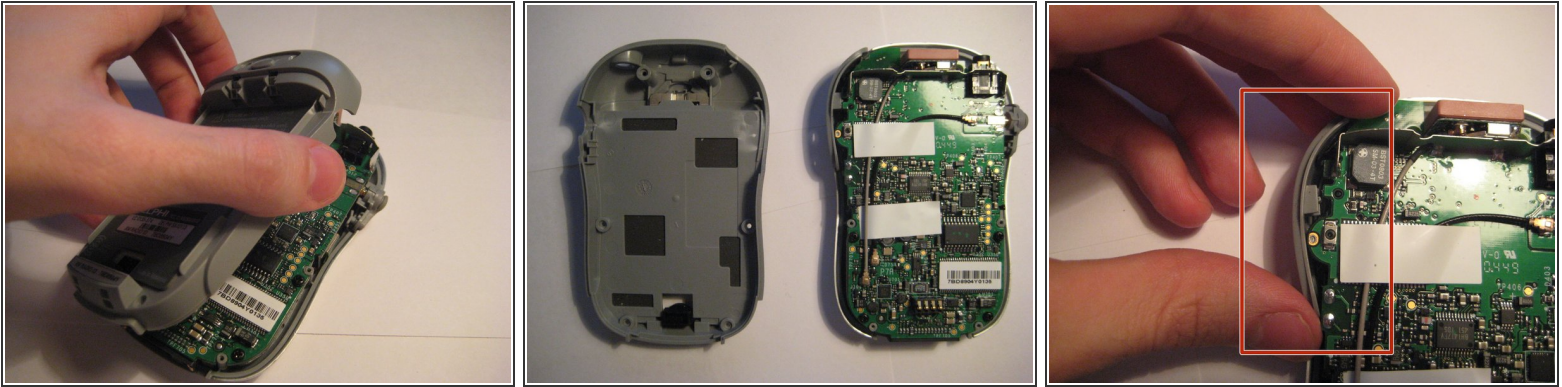
## Step 6



- After removing the cover, use the T6 screwdriver and remove the screws.

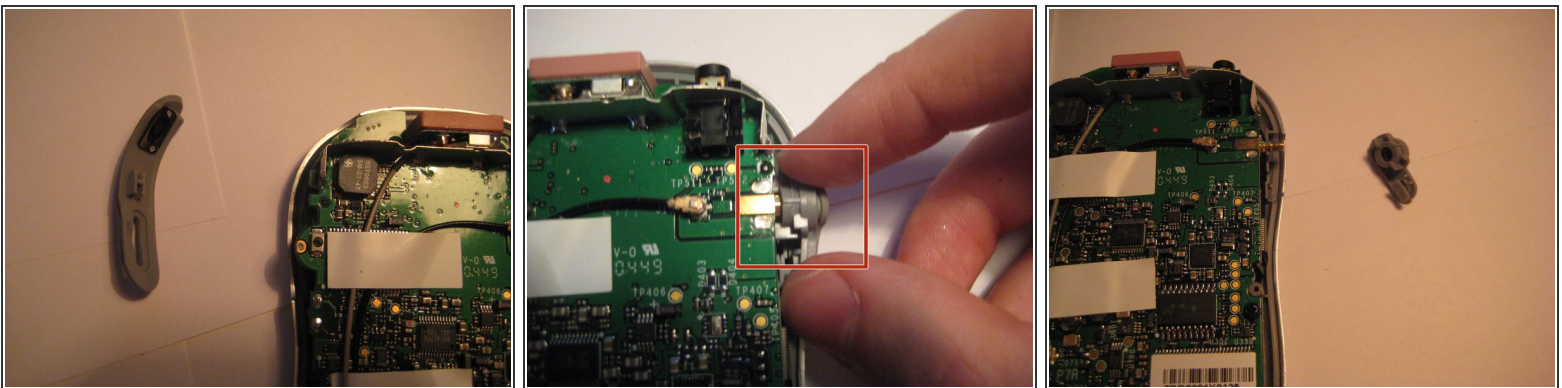


## Step 7



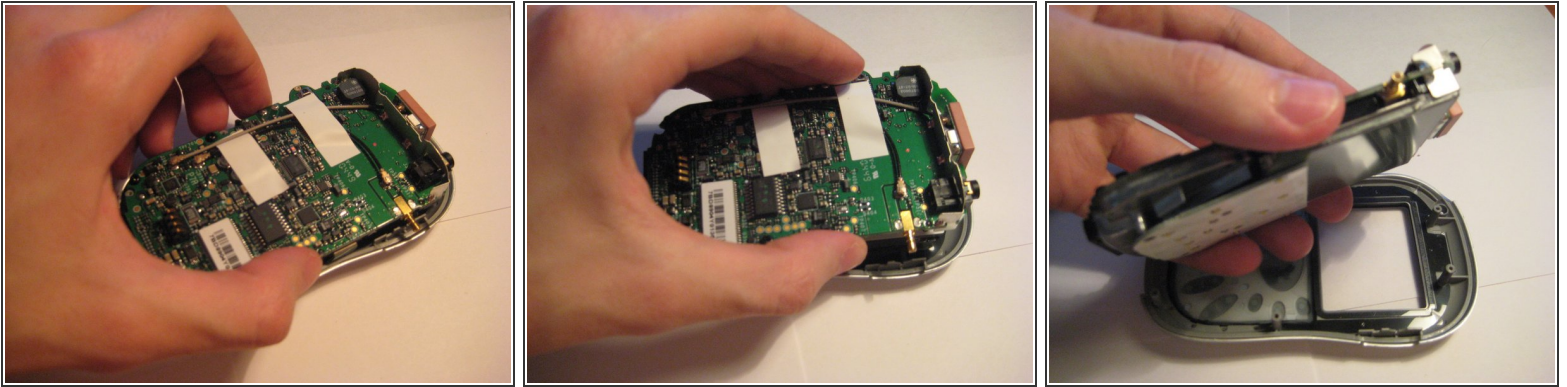
- With the 6 screws removed, the back cover can be removed revealing the backside of the motherboard (PCB Logic Board).
- Pull up on the back cover from the device.
- Locate the power button.

## Step 8




- Remove the power button from the left.
- Locate the antenna extension connector on the right and remove the plastic piece.

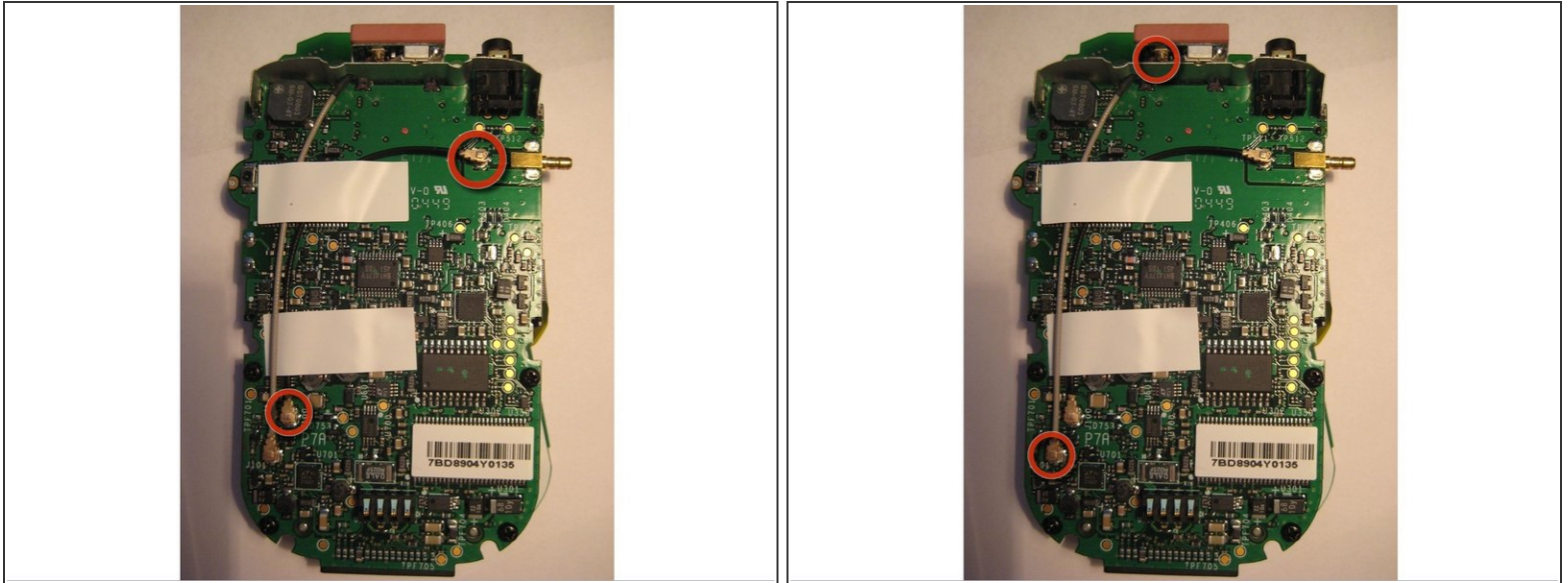
## Step 9



- After removing the screws and two external pieces, the PCB Logic Board can be removed from the front piece.
- Simply pull up on the PCB Logic Board to remove.

 **CAUTION:** Be careful of the LCD screen and keypad as they are only connected via ribbon cables to the board. They will hang down as the PCB Logic Board is removed.

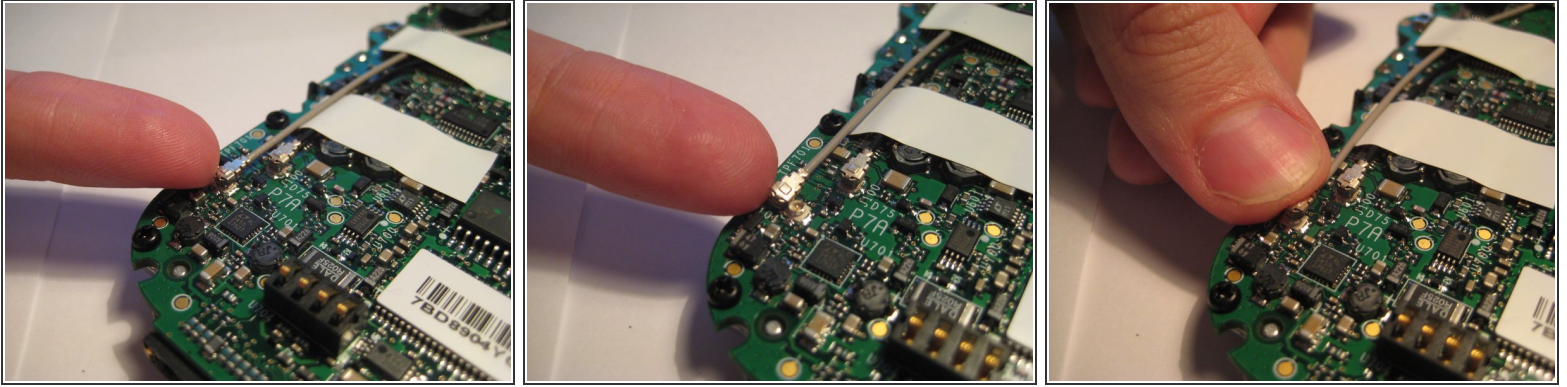
## Step 10 — Reattaching Delphi MyFi XM2GO Antenna Connectors



- In the first picture, a connection may be seen with the black cable connecting the external antenna connector to the internal logic board (PCB) via U.FL connectors. The connectors on the ends of the cable are circled in red.
- In the second picture, a connection may be seen with the with the gray cable connecting the external antenna connector to the internal logic board (PCB) via U.FL connectors. The connectors on the ends of the cable are circled in red.



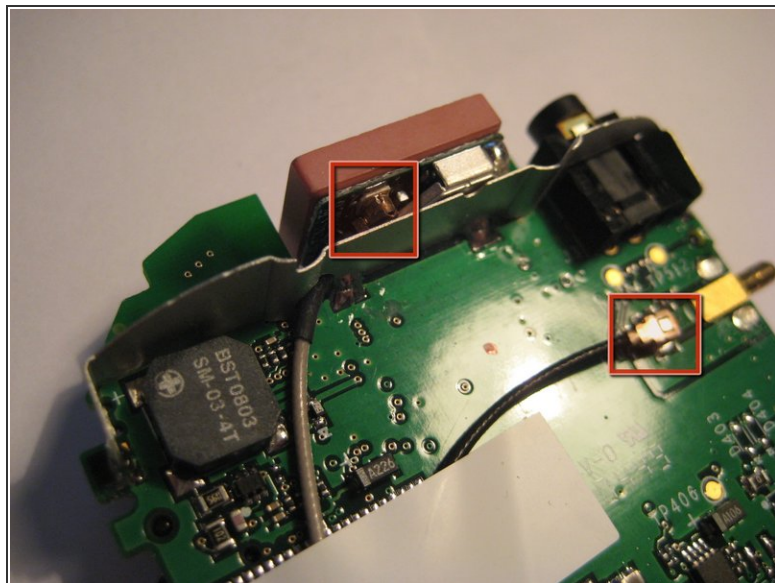
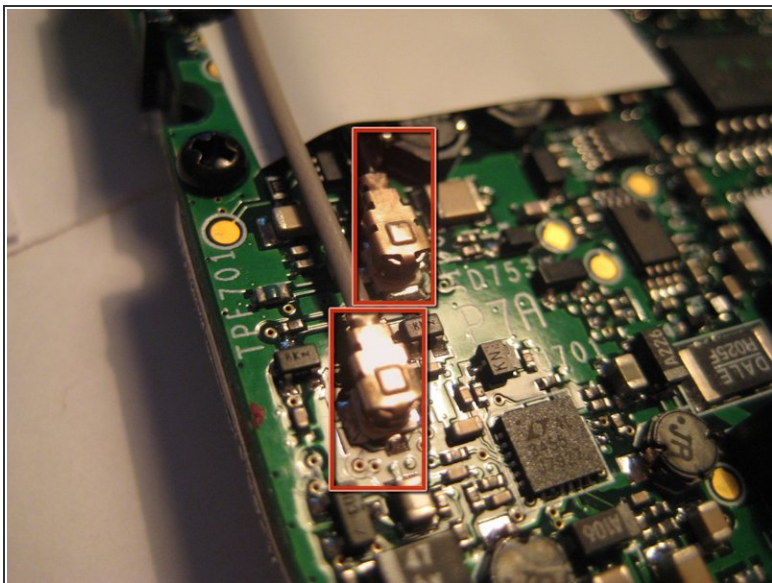
## Step 11



- These antenna cables may need to be replaced should the connection drop from the XM Satellite service.
- To remove, catch the side of the connector with a fingernail moving upward until the connectors pops up from the board.
- After the U.FL connector is loose, center the new connector cable over the mating U.FL connector and press down firmly.

 **CAUTION:** The connectors are delicate, so take much care when reconnecting.

## Step 12



- The U.FL antenna connectors should be secure and immobile as shown in the pictures.
- Try moving them back and forth on the board to assure they are secure.
- The U.FL antenna connectors are shown to be secure in the pictures highlighted with red boxes.

To reassemble your device, follow these instructions in reverse order.