



Reconnecting Screen to Logic Board Guide

This guide will show you how to reconnect the display screen on your device in case the screen will not turn on.

Written By: Nick Sherman



INTRODUCTION

This guide will lead you through the steps necessary to access the screen's components as well as how to assure it is properly connected.

TOOLS:

- [Phillips #00 Screwdriver](#) (1)
-

Step 1 — Screen



- Flip the device over

Step 2



- Unscrew the 2 screws closest to the screen

Step 3



- Flip the device back over
- ⓘ It is now standing right side up

Step 4



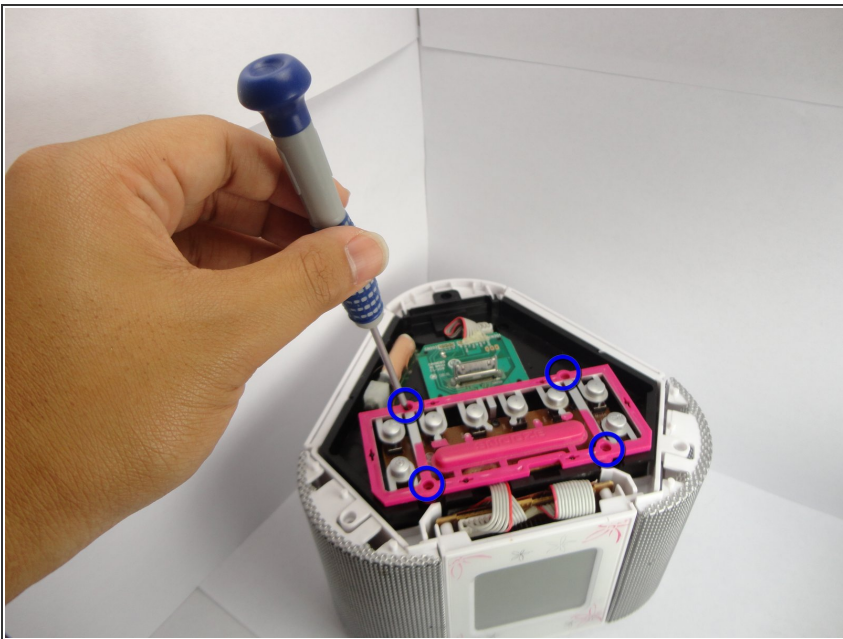
- Unscrew the top.

Step 5



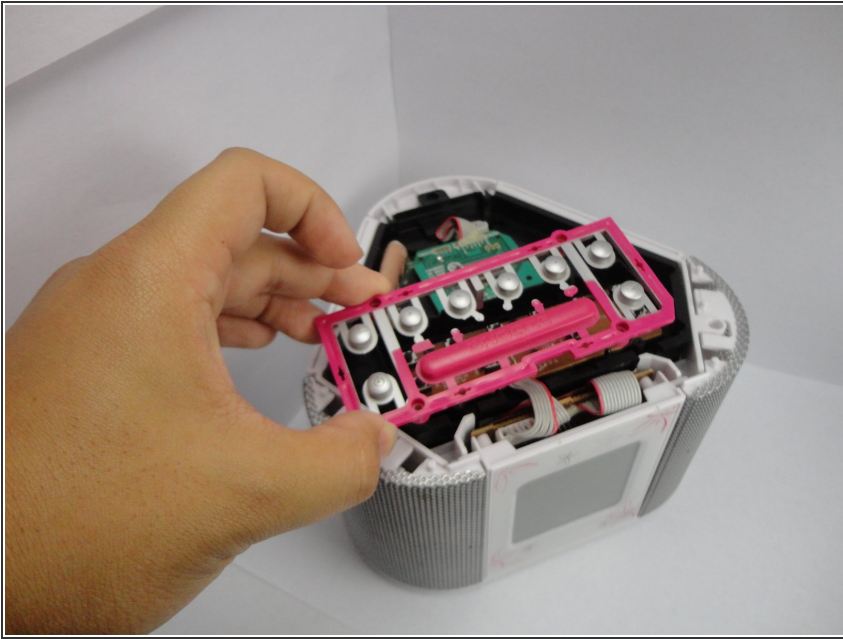
- Take the top of the device off.

Step 6



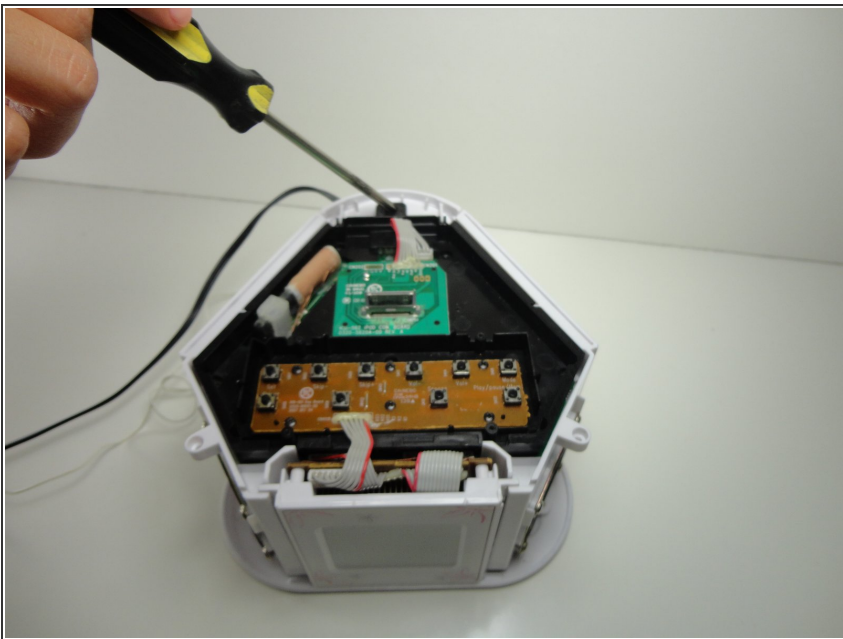
- Unscrew the button board.

Step 7



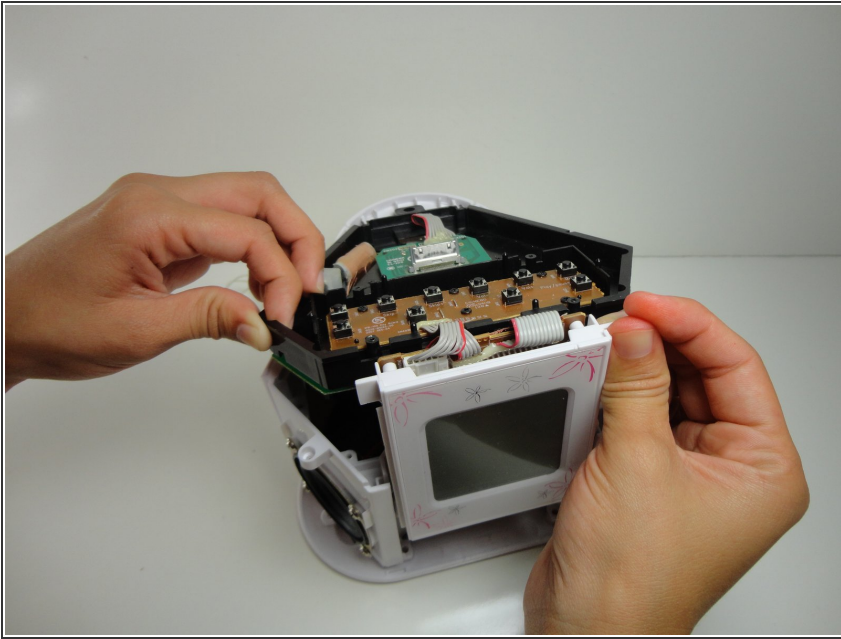
- Take off the button board.

Step 8



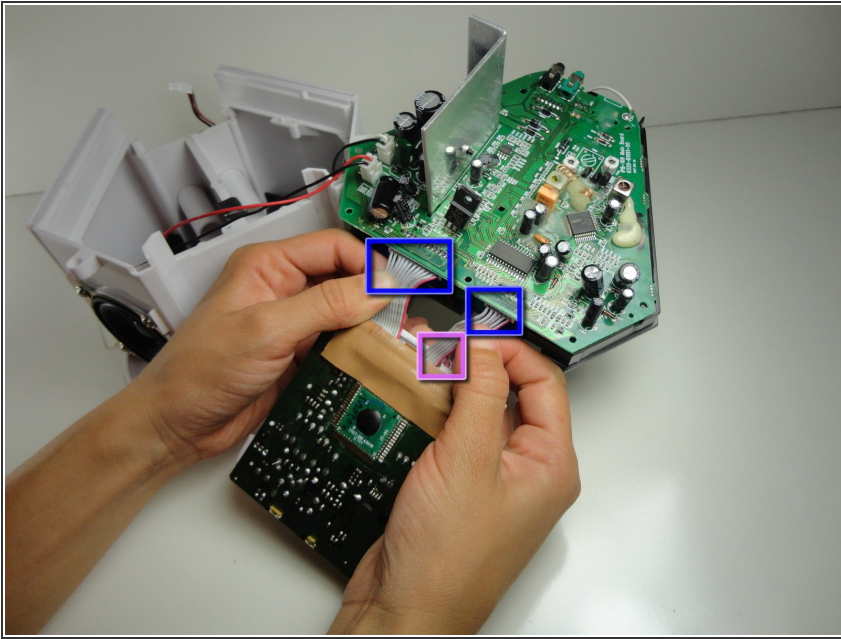
- Unscrew all visible screws on the black logic board cover.

Step 9



- Lift the screen straight up out of the device.

Step 10



- Check that the single input plug from the logic board to the screen (reverse side) is completely pushed in by pressing it firmly into the socket.
 - Also check that the 2 output plugs from the screen to the logic board are completely pushed in by pressing them firmly into the highlighted sockets.
- ⓘ You have successfully reconnected your display screen.

To reassemble your device, follow these instructions in reverse order.