



# RedOctane X-Plorer Front Case Replacement

How to replace the RedOctane X-Plorer front case.

Written By: Riley



## INTRODUCTION

The front case of the guitar is primarily decorative, but removing it is vital to access the internal components of the guitar. This guide will show you how to replace the front cover of the guitar.



### TOOLS:

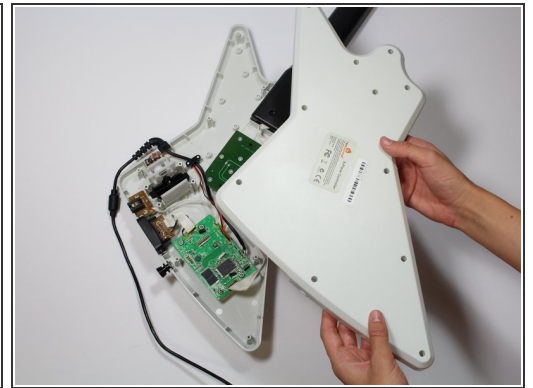
- [Phillips #1 Screwdriver](#) (1)
- [Phillips #0 Screwdriver](#) (1)

## Step 1 — Rear Case



- Remove the strap by pulling it off of the mounts located on the body and neck.

## Step 2



- Remove the nine 12mm Phillips #1 screws around the perimeter of the case with a screwdriver.
- Remove the two 15mm Phillips #1 screws connecting the body panel to the neck panel with a screwdriver.
- ⓘ These screws can also be Torx on some models.
- Pull off the rear case.

### Step 3



- Remove the five 12mm Phillips #1 screws along the neck with a screwdriver.
- Pull off the top shell of the neck to expose the internal features.

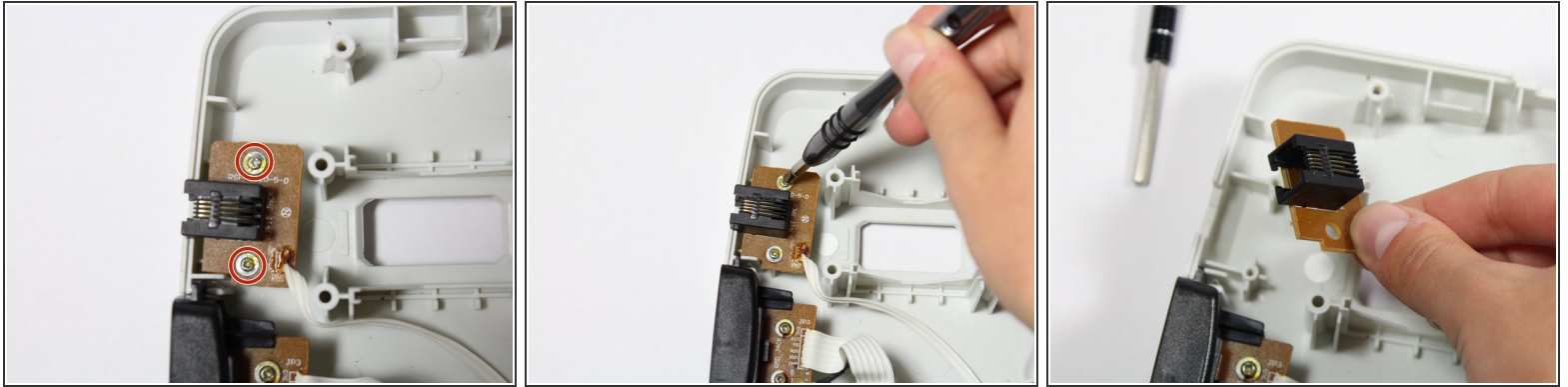
### Step 4 — Auxiliary Port



- Remove the two 10mm Phillips #1 screws from the auxiliary port board using a screwdriver.
- Gently lift up on the auxiliary port to remove it from the case.



## Step 5 — RJ-14 Connector



- Remove the two 10mm Phillips #1 screws from the RJ-14 connector board.
- Lift the RJ-14 connector to remove it from the case.

## Step 6 — Keys



- Use a screwdriver to remove the 10 mm Phillips #1 screws from the key sensor board.
- Lift up on the key sensor board to remove it from the guitar neck.

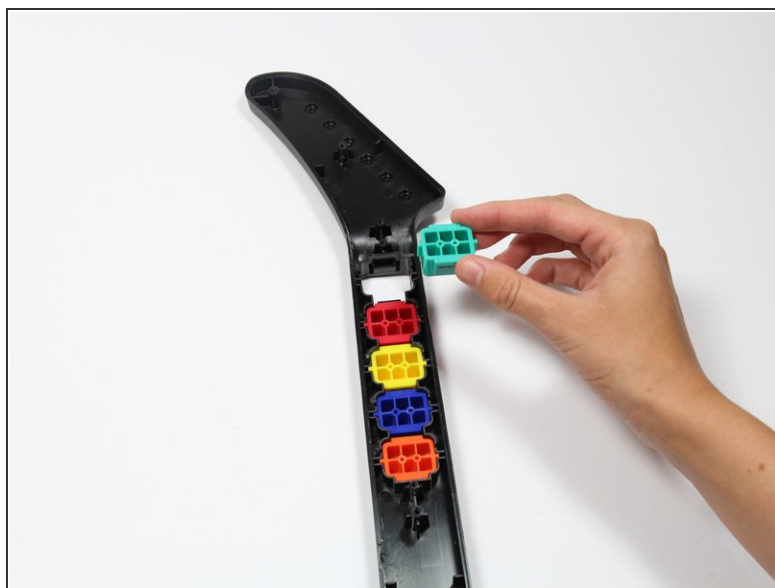
⚠ When using the screwdriver, make sure to avoid puncturing the wires.

## Step 7



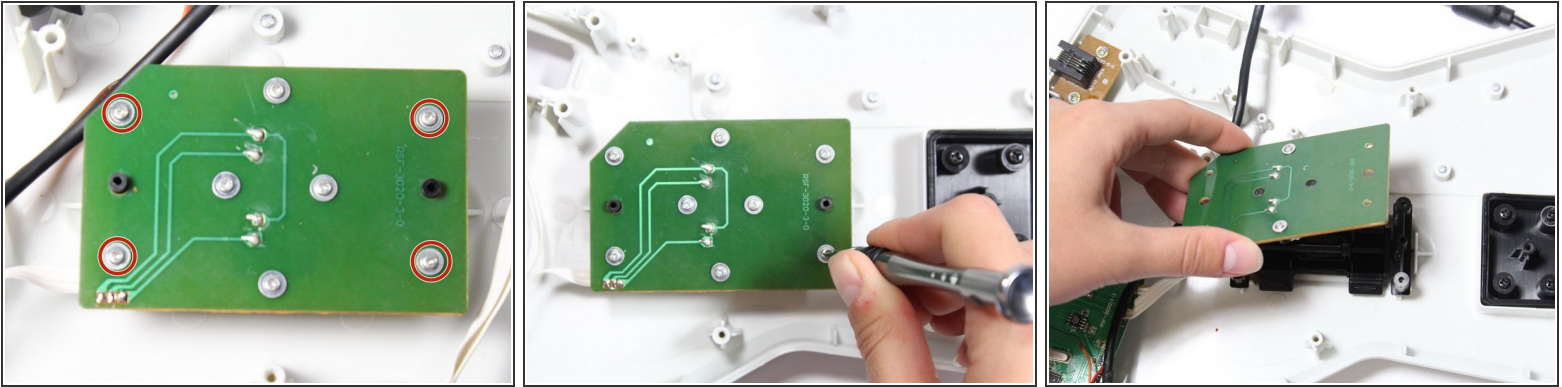
- Using your fingers, remove the rubber pad to expose the colored keys.

## Step 8



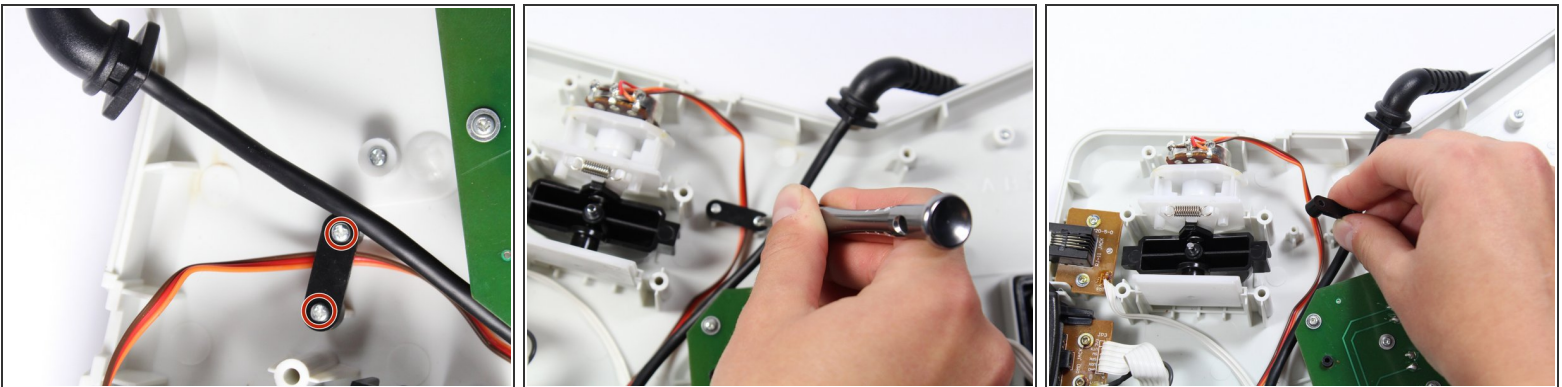
- Reach one finger under the guitar to push the key out of the casing.
- Repeat this step for the four remaining keys.

## Step 9 — Strum Bar Sensor Board



- Use a screwdriver to remove the four 14mm Phillips #1 screws around the perimeter of the strum bar sensor board.
- Lift up on the strum bar sensor board to remove it from the case.

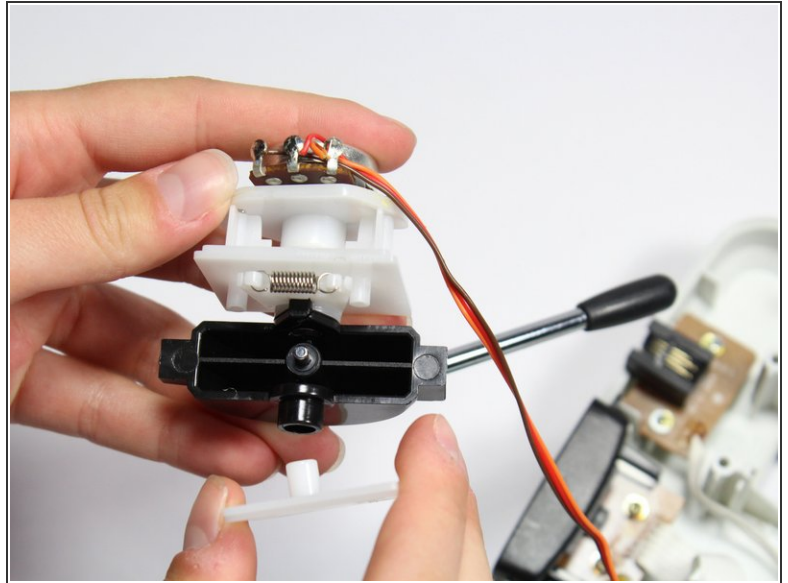
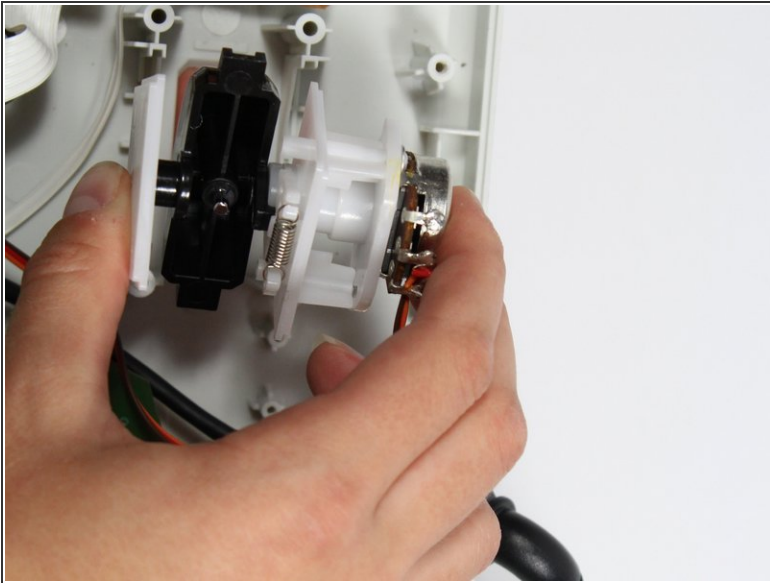
## Step 10 — Whammy Bar Sensor



- Remove the two 7mm Phillips #0 screws.
- Using your fingers, remove the black wire retainer.

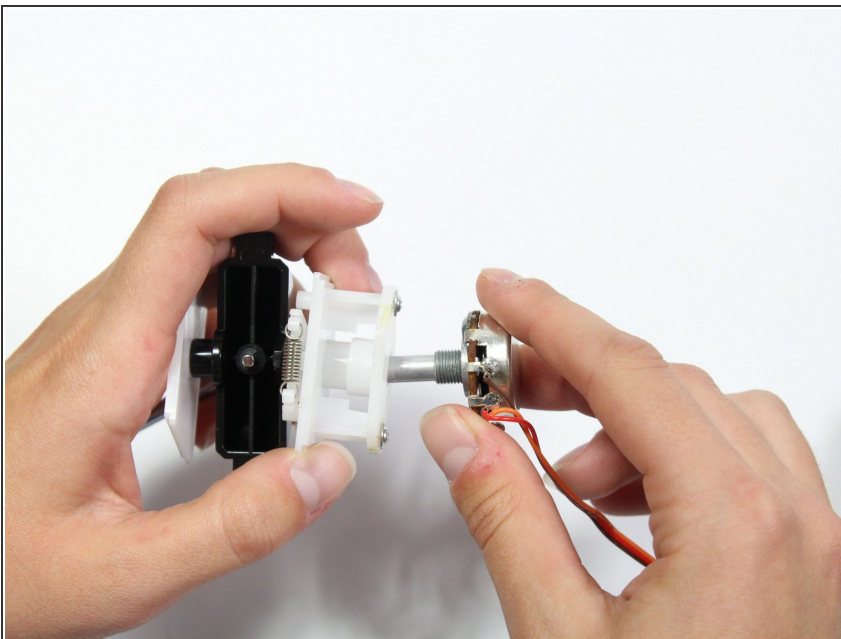


## Step 11



- Using one hand, remove the whammy bar and its attached components from the case.

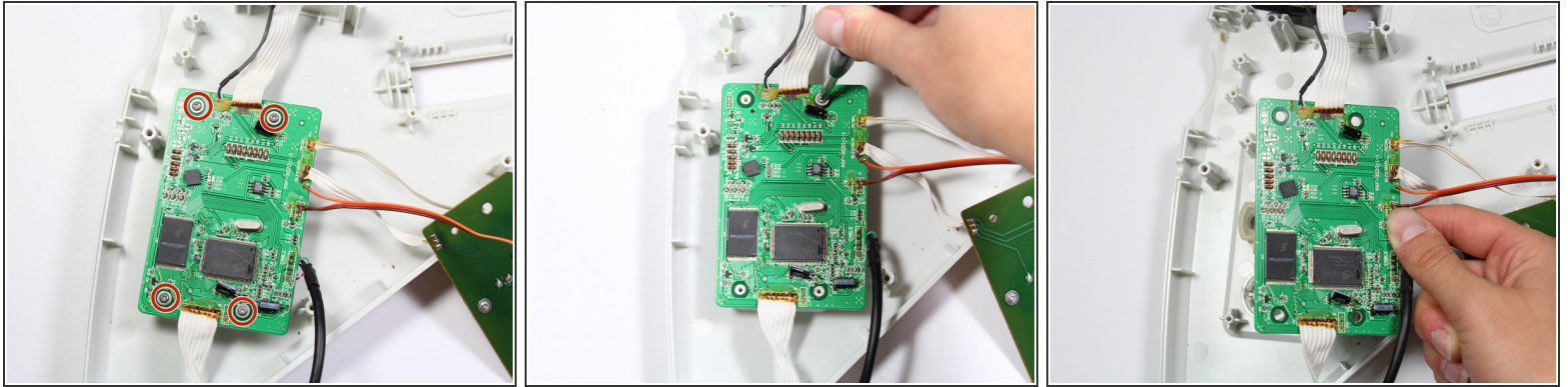
## Step 12



- Using two hands, remove the whammy bar sensor.

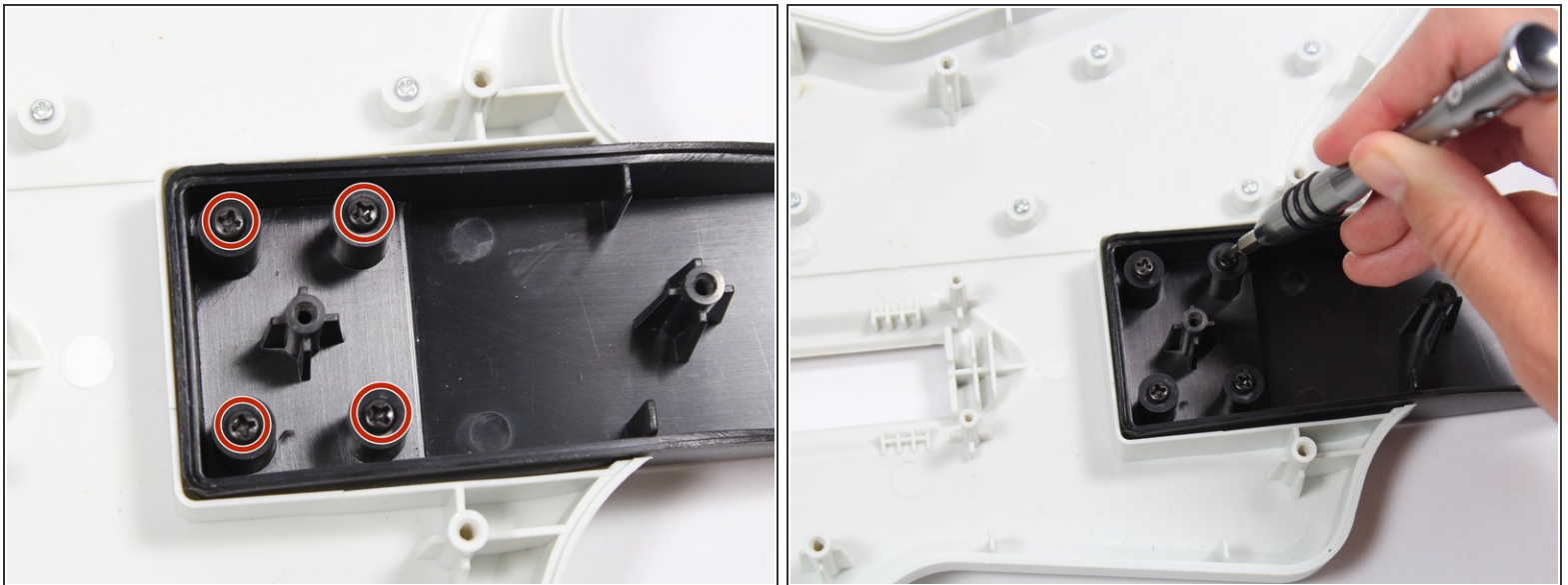


## Step 13 — Motherboard



- Remove the four 10mm Phillips #1 screws around the perimeter of the motherboard with a screwdriver.
- Lift the motherboard to remove it from the case.

## Step 14 — Front Case



- Remove the four 12mm Phillips #1 that connect the body to the neck using a screwdriver.

## Step 15



- Remove the neck panel from the front body panel.

To reassemble your device, follow these instructions in reverse order.