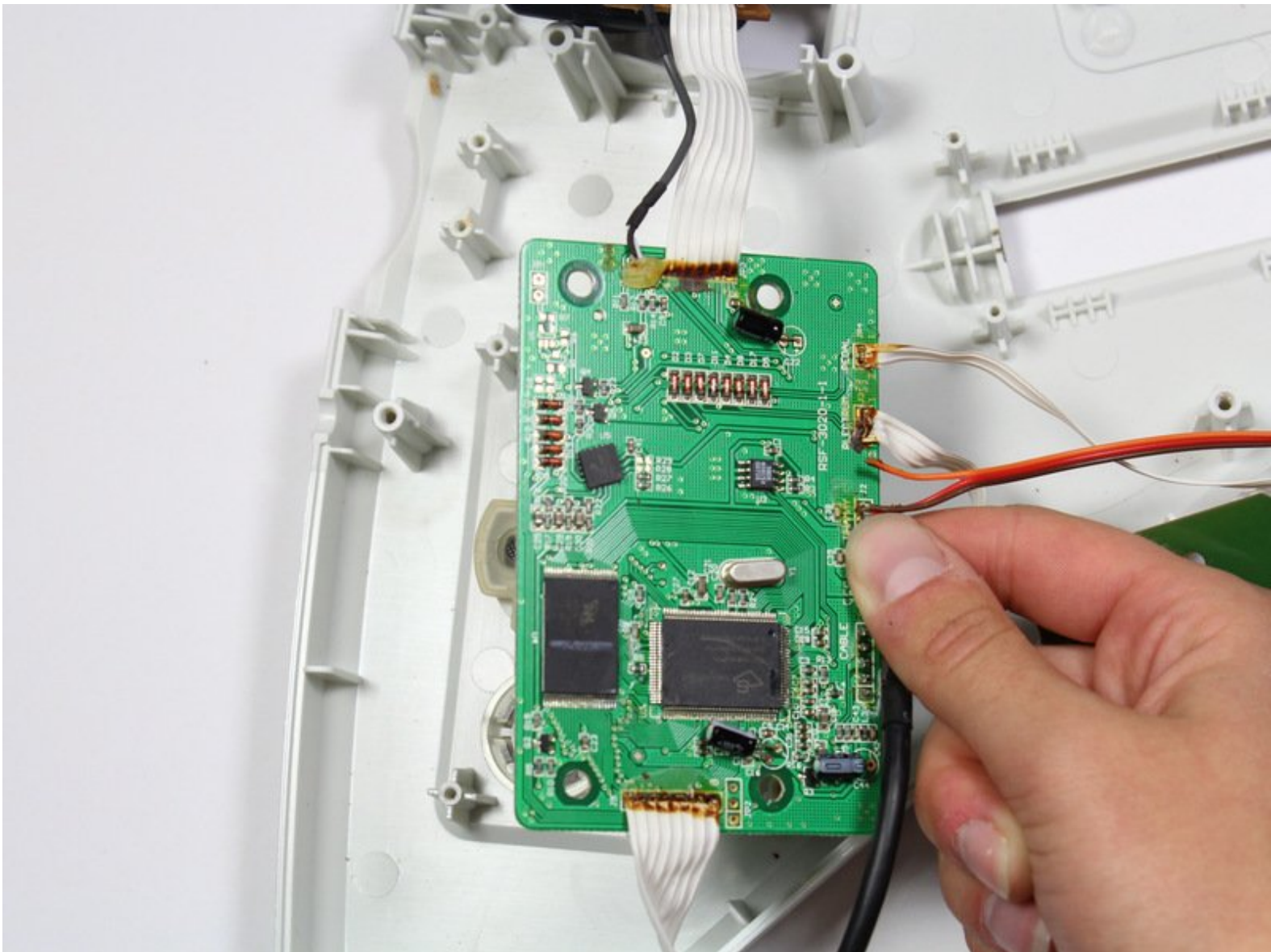




# RedOctane X-Plorer Motherboard Replacement

This guide will show you how to replace the motherboard on the RedOctane X-Plorer.

Written By: Riley



## INTRODUCTION

If the motherboard becomes damaged, all other electronics must be removed first before you can access it. This guide will show you the steps necessary to access the motherboard.



### TOOLS:

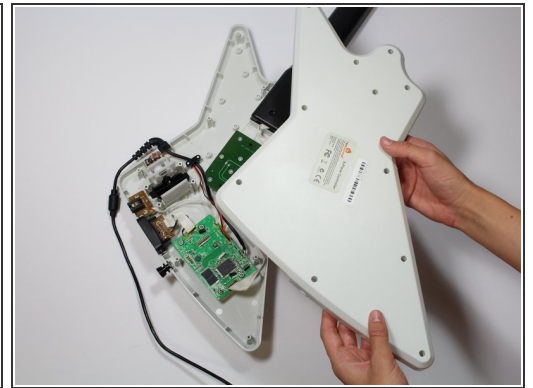
- [Phillips #1 Screwdriver](#) (1)
  - [Phillips #0 Screwdriver](#) (1)
-

## Step 1 — Rear Case



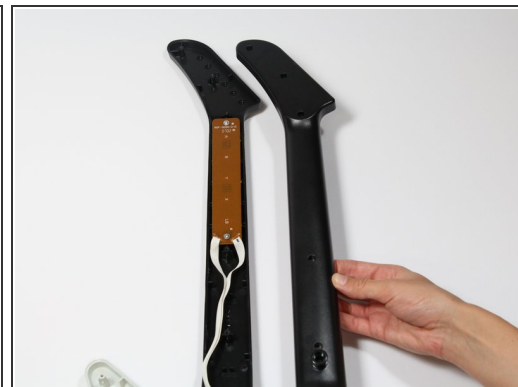
- Remove the strap by pulling it off of the mounts located on the body and neck.

## Step 2



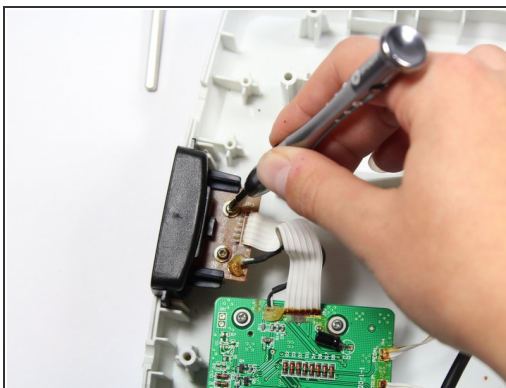
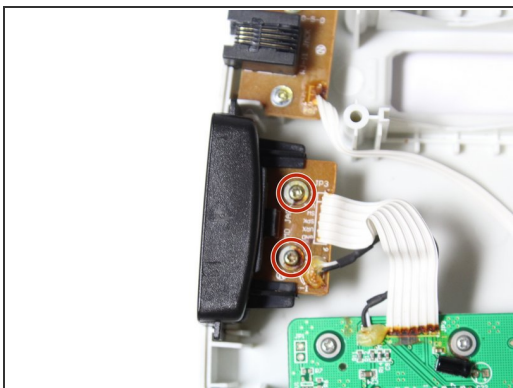
- Remove the nine 12mm Phillips #1 screws around the perimeter of the case with a screwdriver.
- Remove the two 15mm Phillips #1 screws connecting the body panel to the neck panel with a screwdriver.
- ⓘ These screws can also be Torx on some models.
- Pull off the rear case.

### Step 3



- Remove the five 12mm Phillips #1 screws along the neck with a screwdriver.
- Pull off the top shell of the neck to expose the internal features.

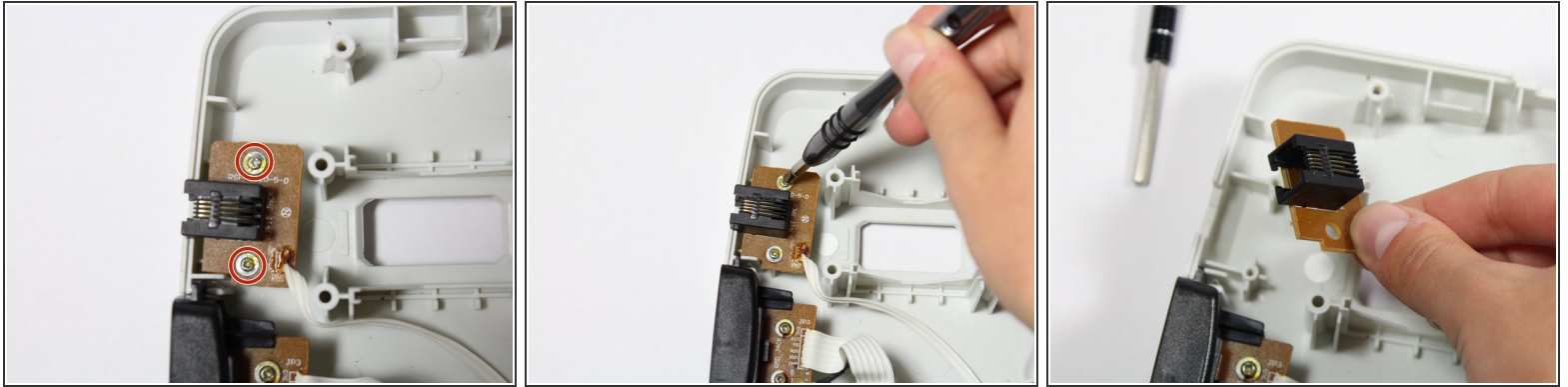
### Step 4 — Auxiliary Port



- Remove the two 10mm Phillips #1 screws from the auxiliary port board using a screwdriver.
- Gently lift up on the auxiliary port to remove it from the case.



## Step 5 — RJ-14 Connector



- Remove the two 10mm Phillips #1 screws from the RJ-14 connector board.
- Lift the RJ-14 connector to remove it from the case.

## Step 6 — Keys



- Use a screwdriver to remove the 10 mm Phillips #1 screws from the key sensor board.
- Lift up on the key sensor board to remove it from the guitar neck.

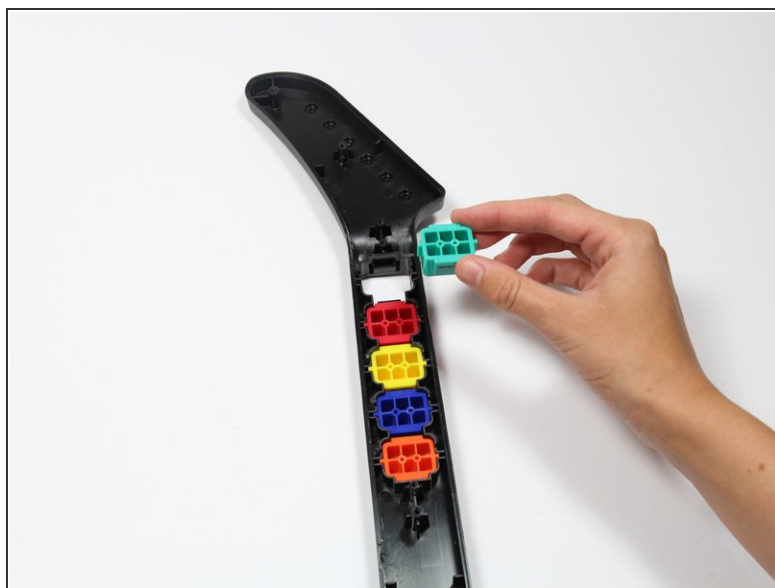
⚠ When using the screwdriver, make sure to avoid puncturing the wires.

## Step 7



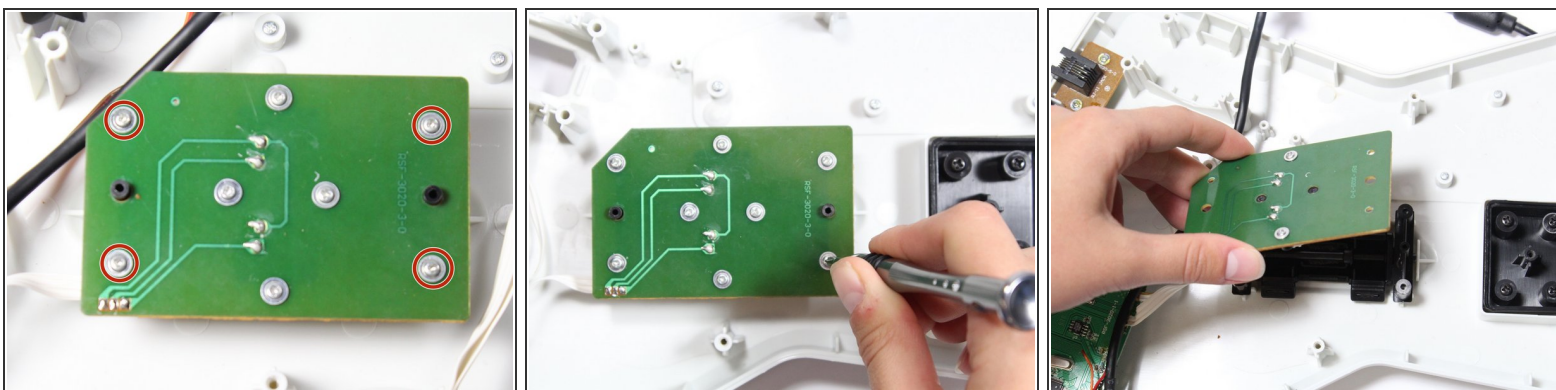
- Using your fingers, remove the rubber pad to expose the colored keys.

## Step 8



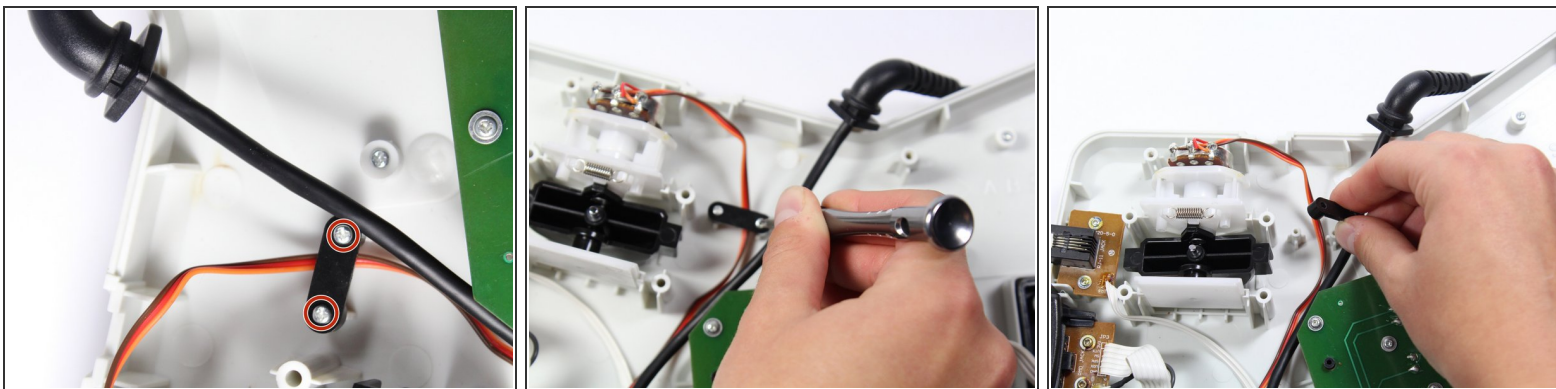
- Reach one finger under the guitar to push the key out of the casing.
- Repeat this step for the four remaining keys.

## Step 9 — Strum Bar Sensor Board



- Use a screwdriver to remove the four 14mm Phillips #1 screws around the perimeter of the strum bar sensor board.
- Lift up on the strum bar sensor board to remove it from the case.

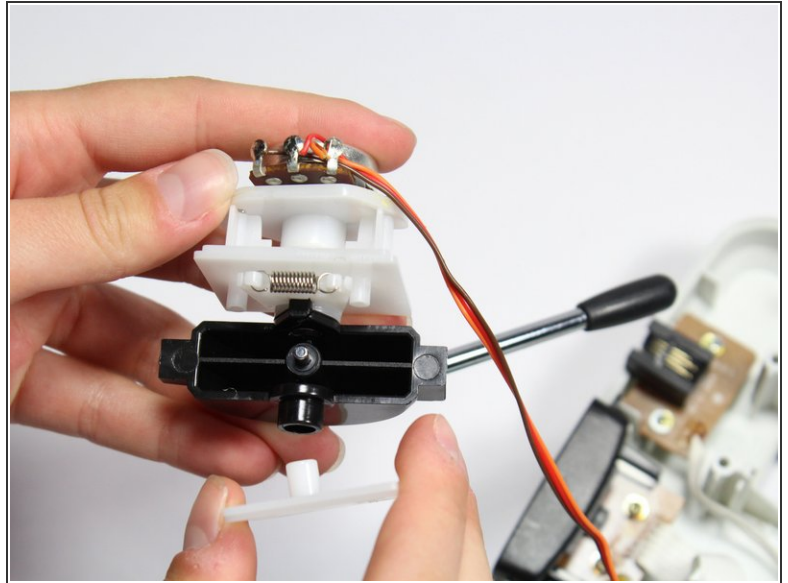
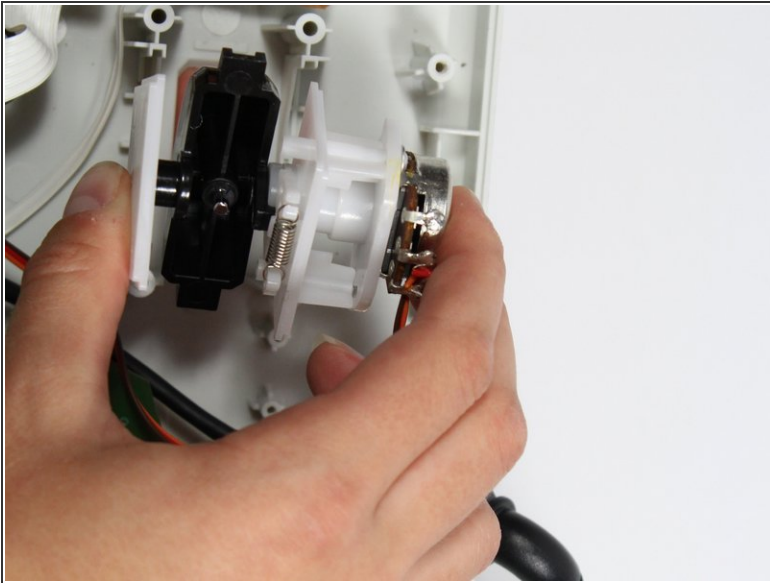
## Step 10 — Whammy Bar Sensor



- Remove the two 7mm Phillips #0 screws.
- Using your fingers, remove the black wire retainer.

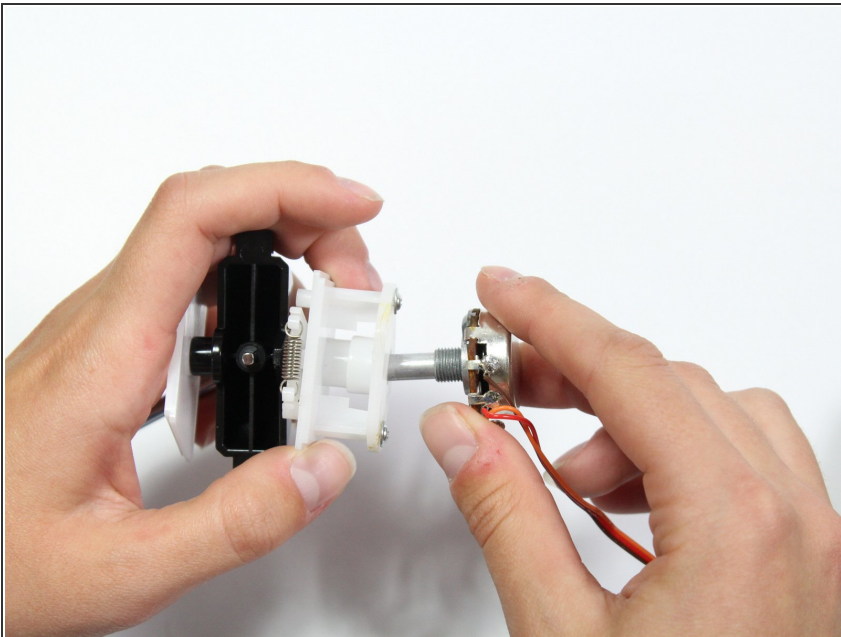


## Step 11



- Using one hand, remove the whammy bar and its attached components from the case.

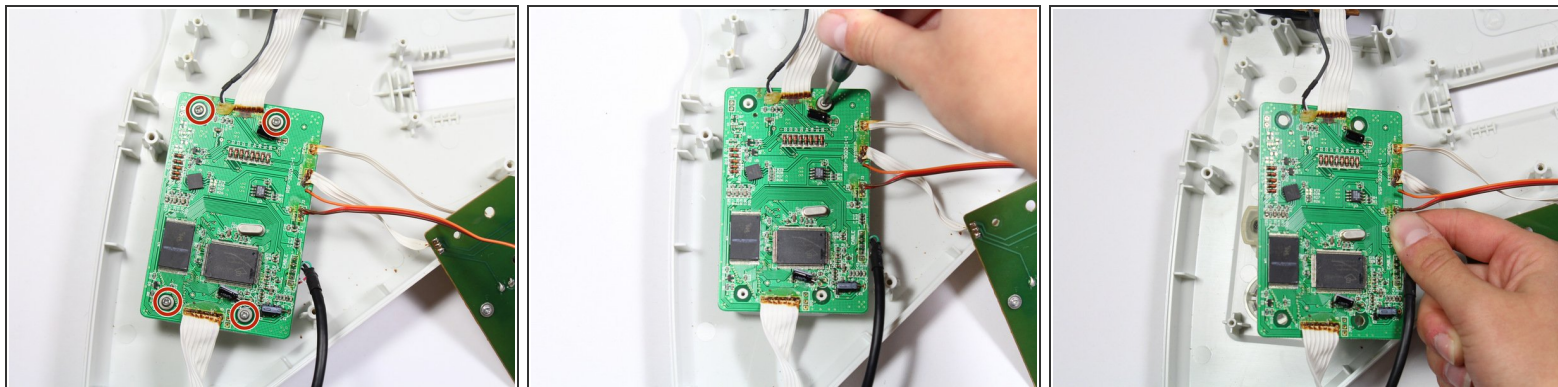
## Step 12



- Using two hands, remove the whammy bar sensor.



## Step 13 — Motherboard



- Remove the four 10mm Phillips #1 screws around the perimeter of the motherboard with a screwdriver.
- Lift the motherboard to remove it from the case.

To reassemble your device, follow these instructions in reverse order.