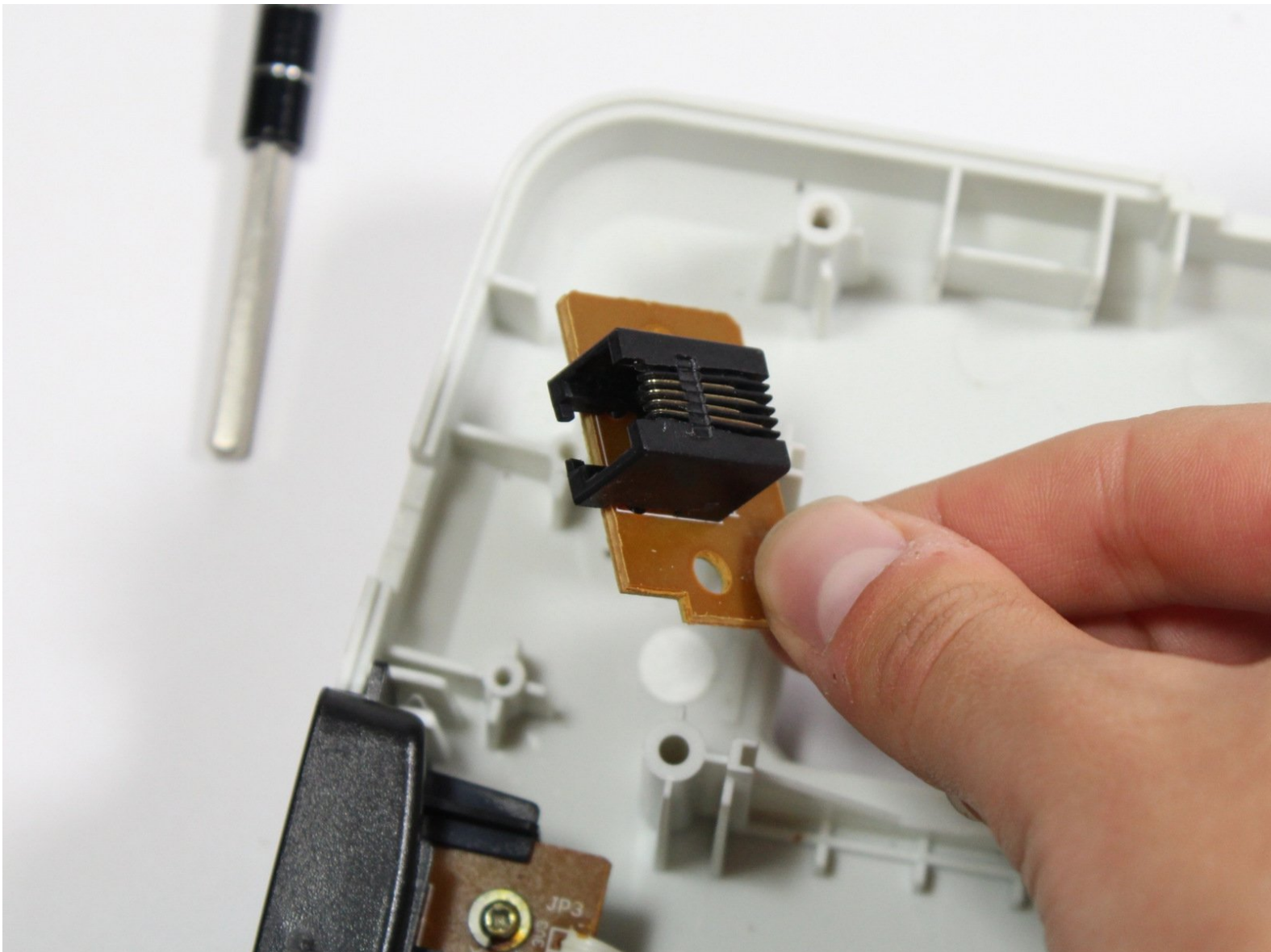




RedOctane X-Plorer Pedal Input Replacement

This guide will show you how to replace the RJ-14 connector on the RedOctane X-Plorer.

Written By: Riley



INTRODUCTION

The RJ-14 connector is designed to connect to pedals that do not come with the device. This guide will show you how to replace the RJ-14 connector located at the bottom of the guitar.

TOOLS:

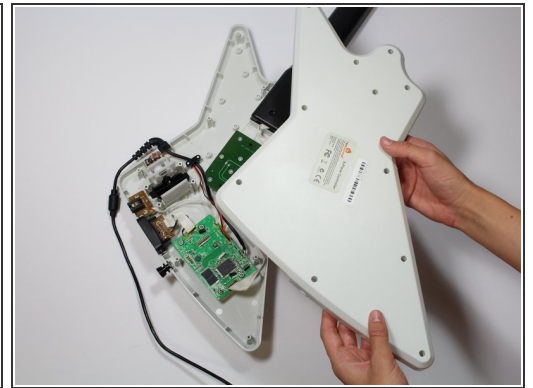
- [Phillips #1 Screwdriver](#) (1)
-

Step 1 — Rear Case



- Remove the strap by pulling it off of the mounts located on the body and neck.

Step 2



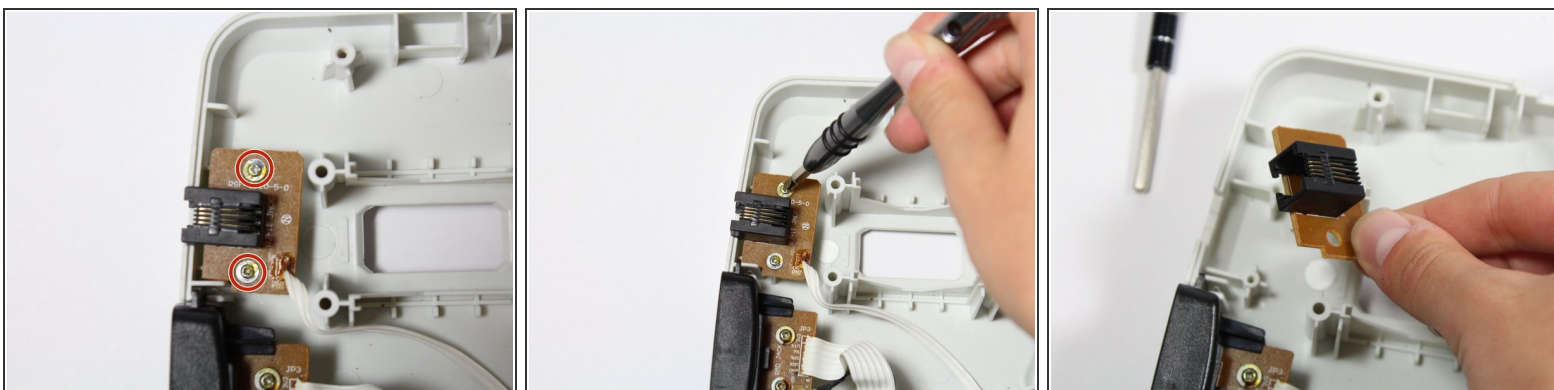
- Remove the nine 12mm Phillips #1 screws around the perimeter of the case with a screwdriver.
- Remove the two 15mm Phillips #1 screws connecting the body panel to the neck panel with a screwdriver.
- ⓘ These screws can also be Torx on some models.
- Pull off the rear case.

Step 3



- Remove the five 12mm Phillips #1 screws along the neck with a screwdriver.
- Pull off the top shell of the neck to expose the internal features.

Step 4 — RJ-14 Connector



- Remove the two 10mm Phillips #1 screws from the RJ-14 connector board.
- Lift the RJ-14 connector to remove it from the case.

To reassemble your device, follow these instructions in reverse order.