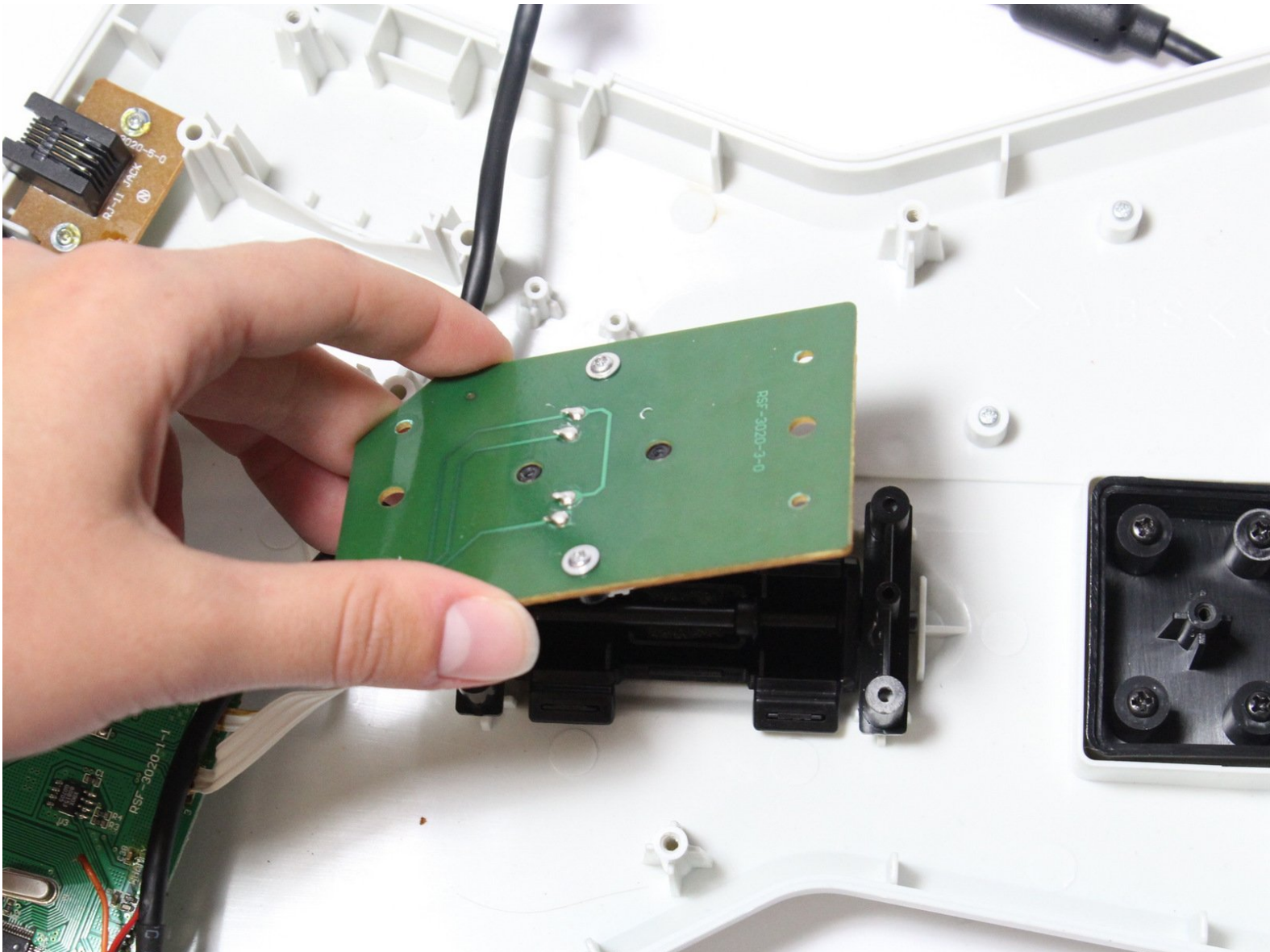




# RedOctane X-Plorer Strum Bar Sensor Board Replacement

This guide will show you how to replace the strum bar sensor board on the RedOctane X-Plorer.

Written By: Riley



---

## INTRODUCTION

The strum bar sensor board will often wear and stop working over time due to overuse. This guide demonstrates how to replace the strum bar sensor board.

---

### TOOLS:

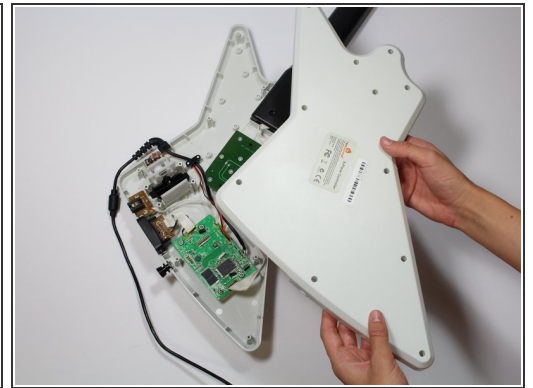
- [Phillips #1 Screwdriver](#) (1)
-

## Step 1 — Rear Case



- Remove the strap by pulling it off of the mounts located on the body and neck.

## Step 2



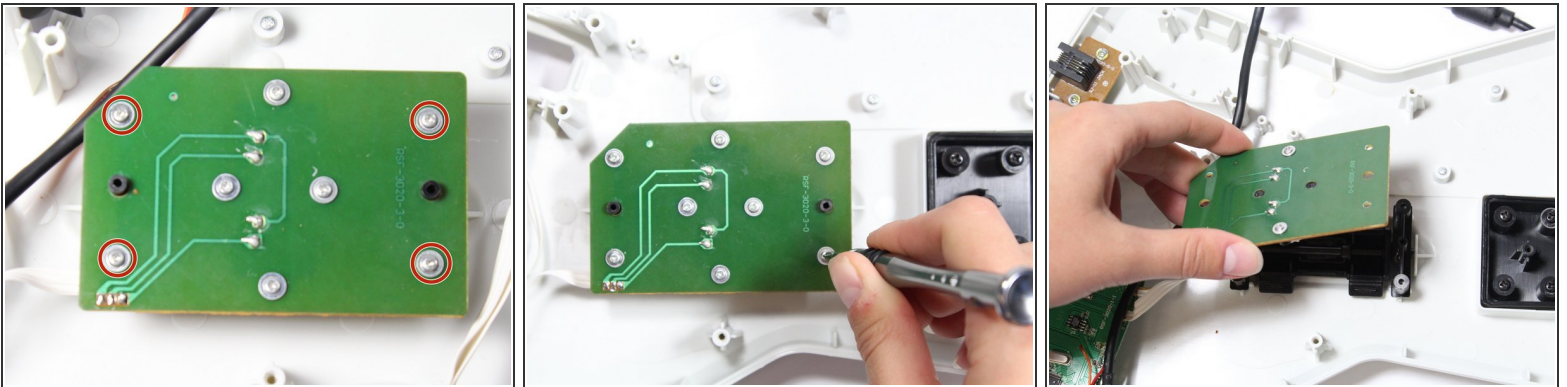
- Remove the nine 12mm Phillips #1 screws around the perimeter of the case with a screwdriver.
- Remove the two 15mm Phillips #1 screws connecting the body panel to the neck panel with a screwdriver.
- ⓘ These screws can also be Torx on some models.
- Pull off the rear case.

### Step 3



- Remove the five 12mm Phillips #1 screws along the neck with a screwdriver.
- Pull off the top shell of the neck to expose the internal features.

### Step 4 — Strum Bar Sensor Board



- Use a screwdriver to remove the four 14mm Phillips #1 screws around the perimeter of the strum bar sensor board.
- Lift up on the strum bar sensor board to remove it from the case.

To reassemble your device, follow these instructions in reverse order.