



Redmi Note 4 Global Display Replacement

Guide for replacing the screen of a Redmi Note 4 Global

Written By: Frederic



INTRODUCTION

Screen and / or digitizer are broken but the rest of the phone is still fully functional.



TOOLS:

- [iFixit Opening Tools](#) (1)
- [Phillips #00 Screwdriver](#) (1)
- [Hair Dryer or Heat Gun](#) (1)



PARTS:

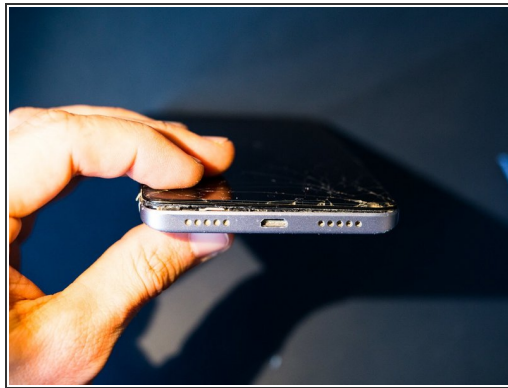
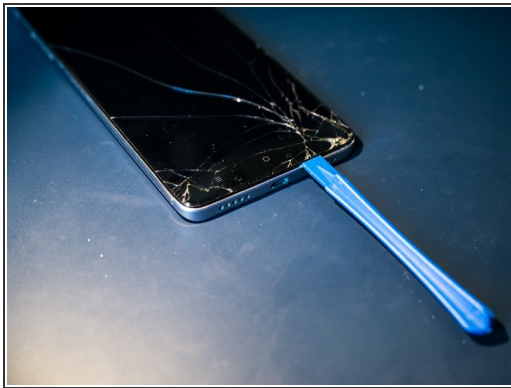
- [New Item](#) (1)

Step 1 — Display



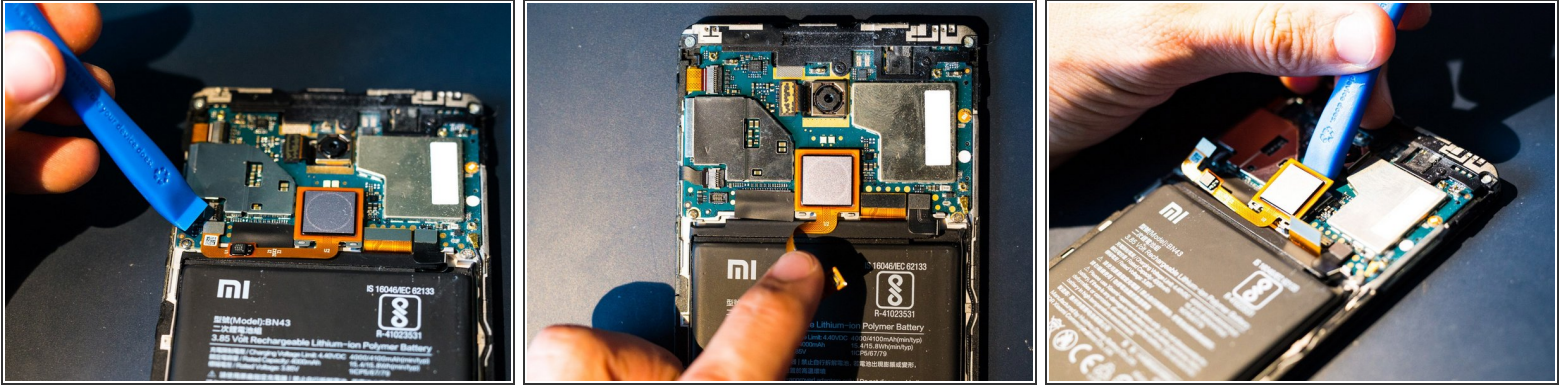
- Use a pin to remove the SIM & SD card

Step 2



- With the help of a silicone spatula or similar opening tool, press gently into the separation between housing and screen
- Gently pry the frame away from the screen .

Step 3



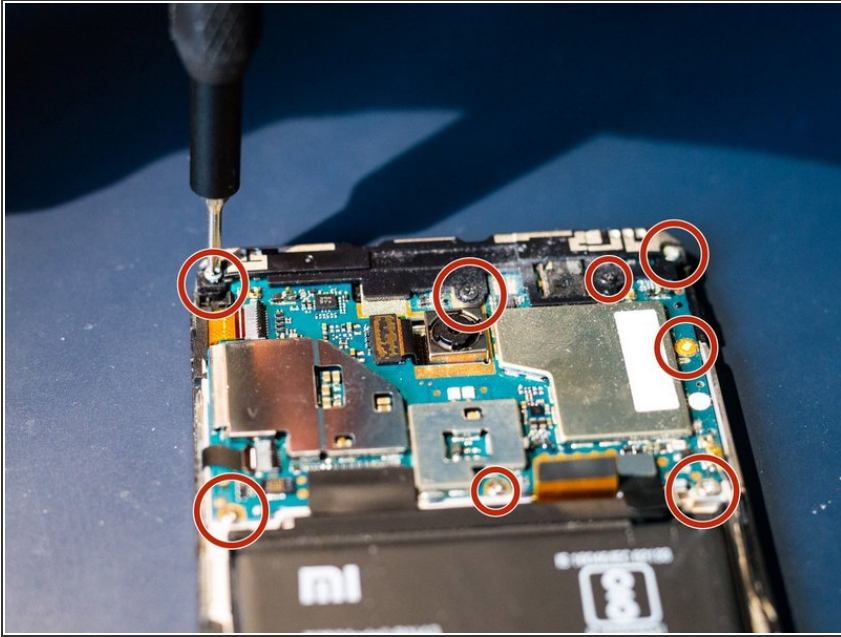
- First disconnect the connector for the fingerprint scanner
- Then carefully pry the scanner (it is adhered to the board)
- Preheating the scanner area with a hair dryer can help

Step 4



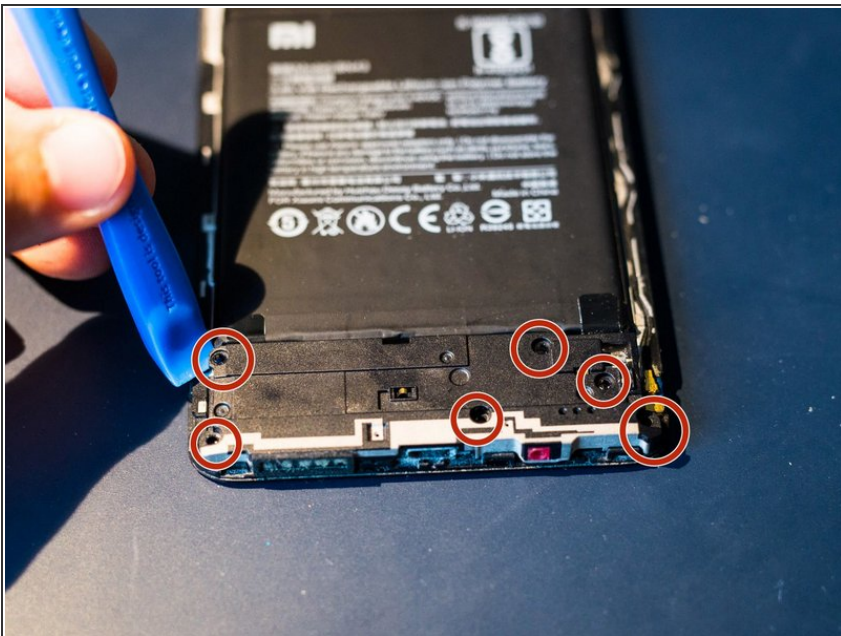
- Disconnect the rest of the connectors

Step 5



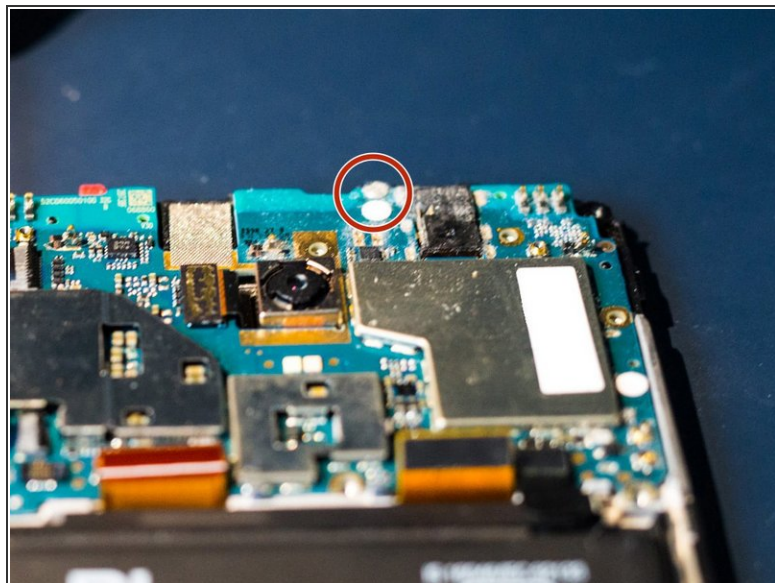
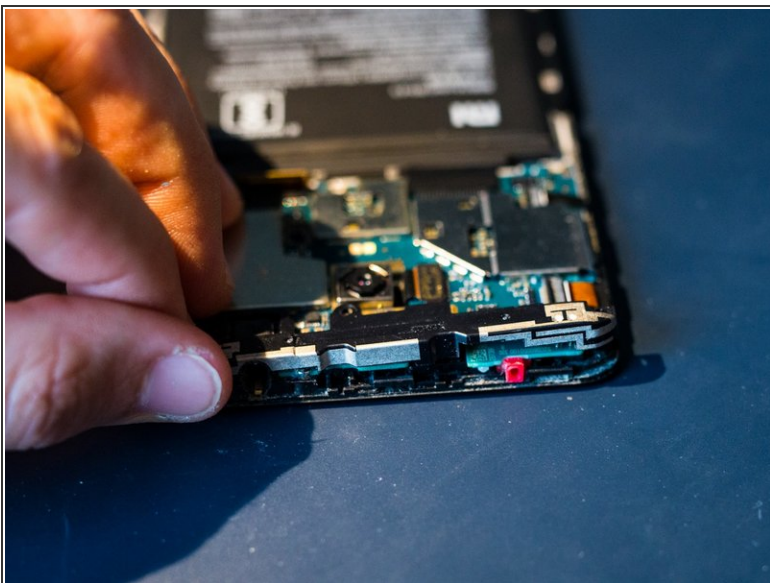
- Remove all Phillips screws eg with a #00 Phillips driver

Step 6



- Remove the rest of the screws
- Gently pry off the plastic covers

Step 7



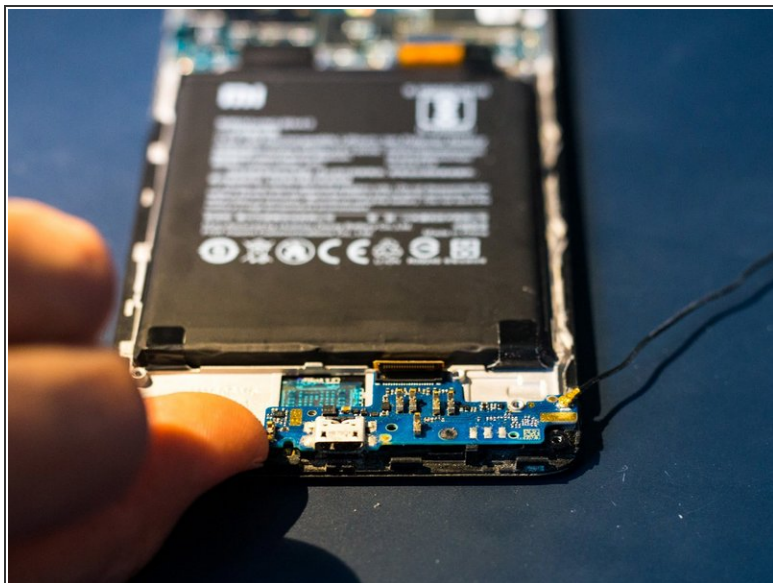
- Remove the plastic cover from the top of the phone
- Gentle prying may be help to loosen it.
- Remove the screw hidden under the cover.

Step 8



- Move the plastic tab to the side to remove the main board

Step 9



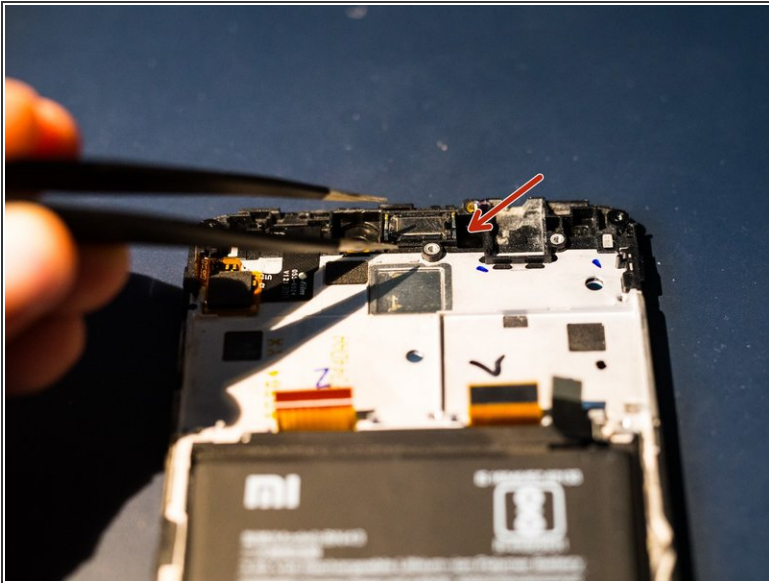
- Disconnect the ribbon cable
- Carefully remove the circuit board

Step 10



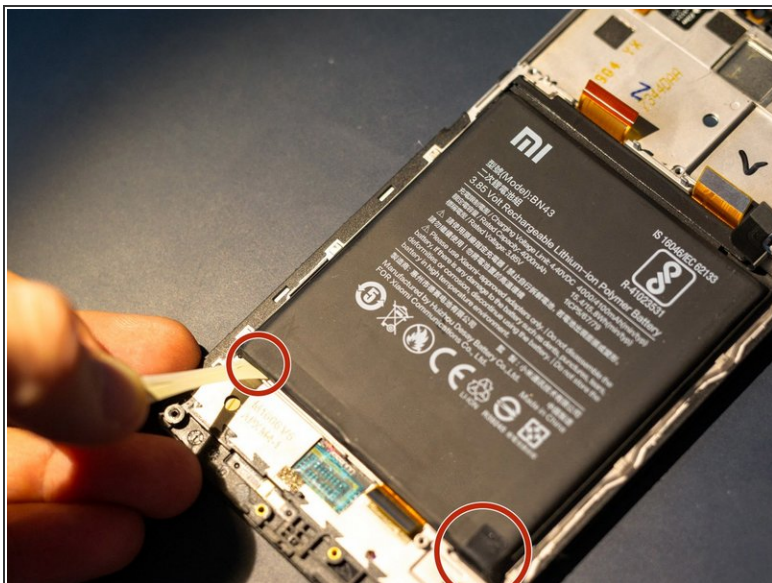
- Gently separate the side button bar from the frame

Step 11



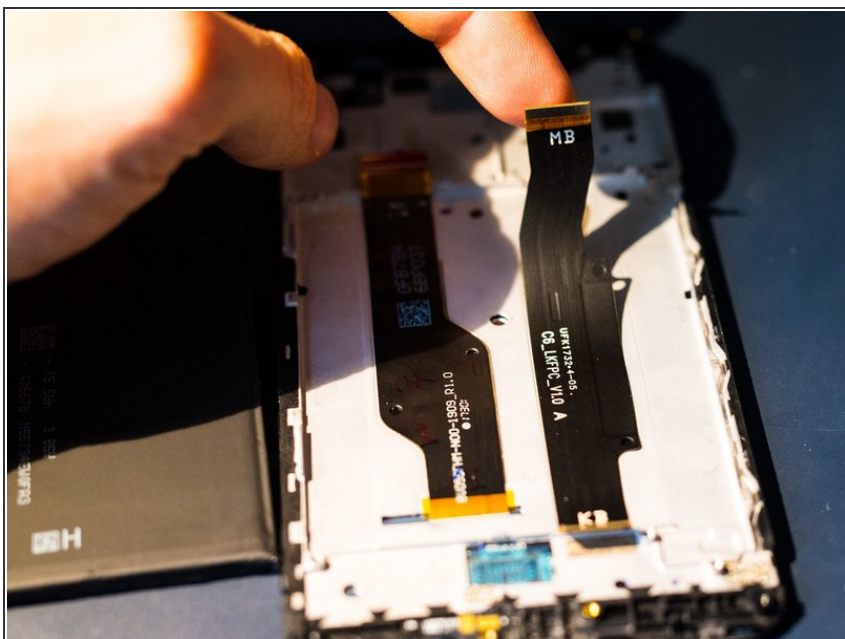
- Remove the upper speaker
- Caution: When removing the speaker, the two parts of the speaker can separate from each other. They are only held together by two very thin copper cables!
- The best way to get to the bottom of the speaker and pry it out carefully is by using the direction of the red arrow.

Step 12



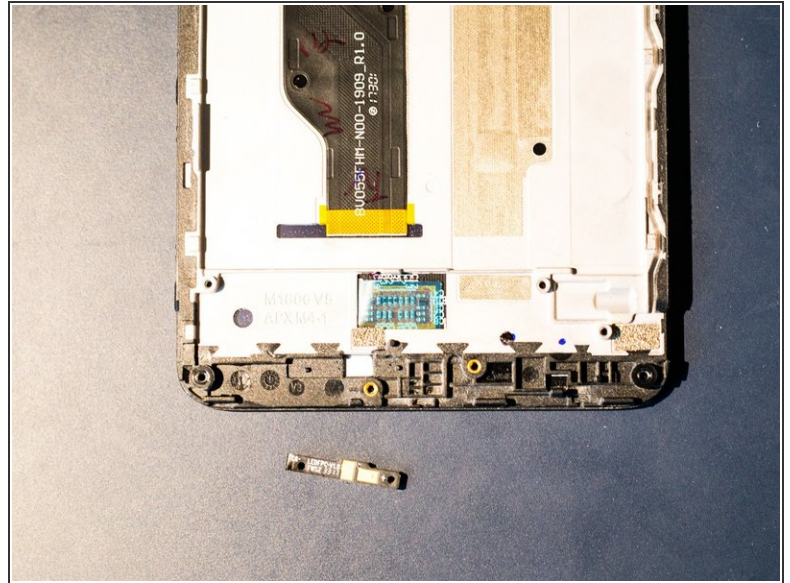
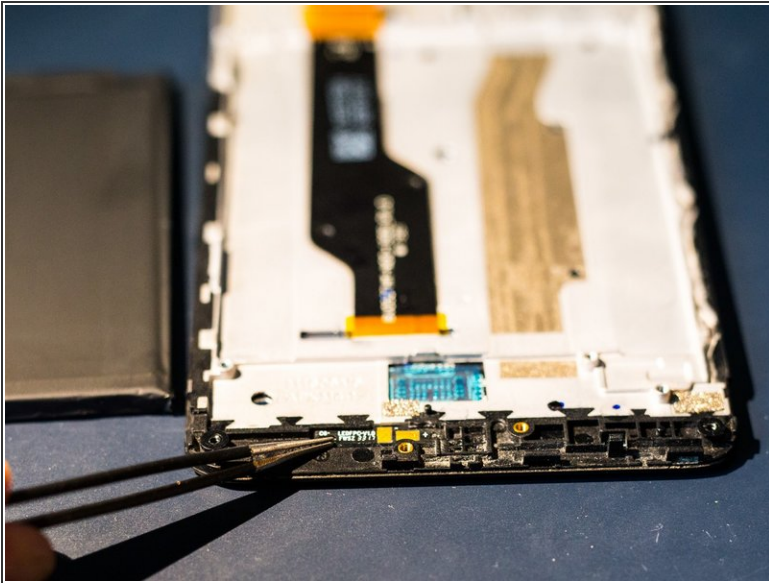
- To remove the battery remove the two adhesive strips by pulling the tabs.

Step 13



- Disconnect the ribbon cable for the charging board. Keep it safe for later reuse.

Step 14



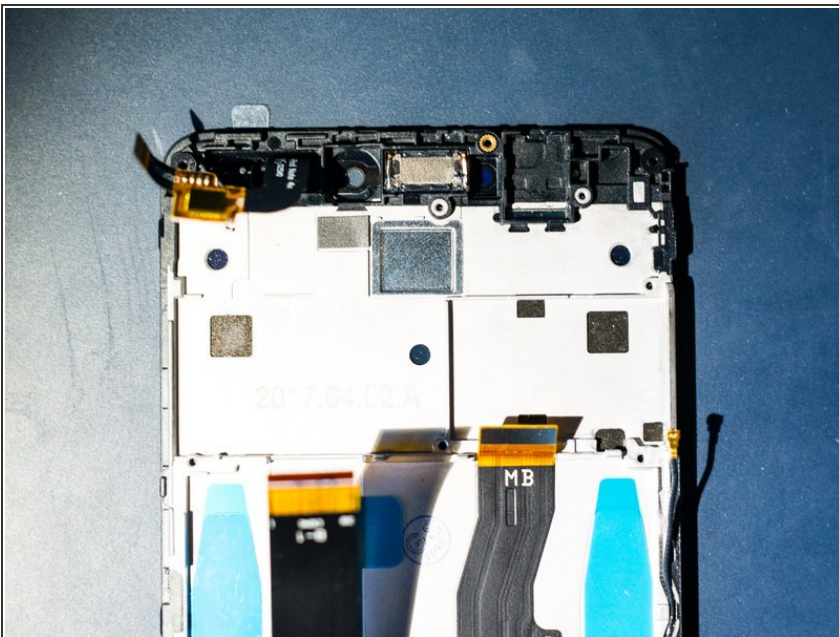
- Depending on the completeness of the replacement part, the LED lighting may also be removed
- To remove it, gently pry with some pointed tweezers or similar tool

Step 15 — First Test



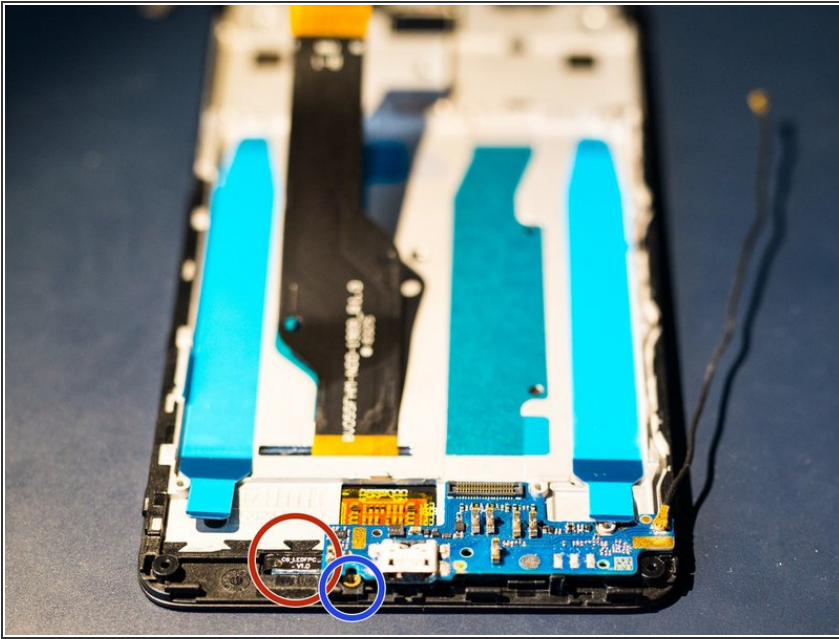
- For testing purposes, the button bar, the screen and the battery can be connected.
- Attention! When doing so, there is an increased risk of damaging the connections or the battery. Be very careful!
- A long press on the bottom button should start the phone

Step 16



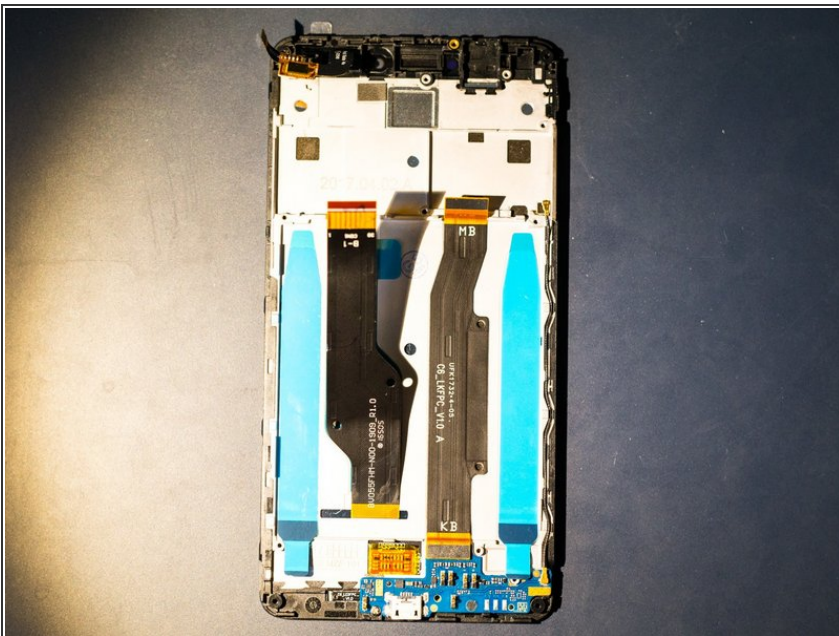
- Insert the upper speaker and press it into the end position

Step 17



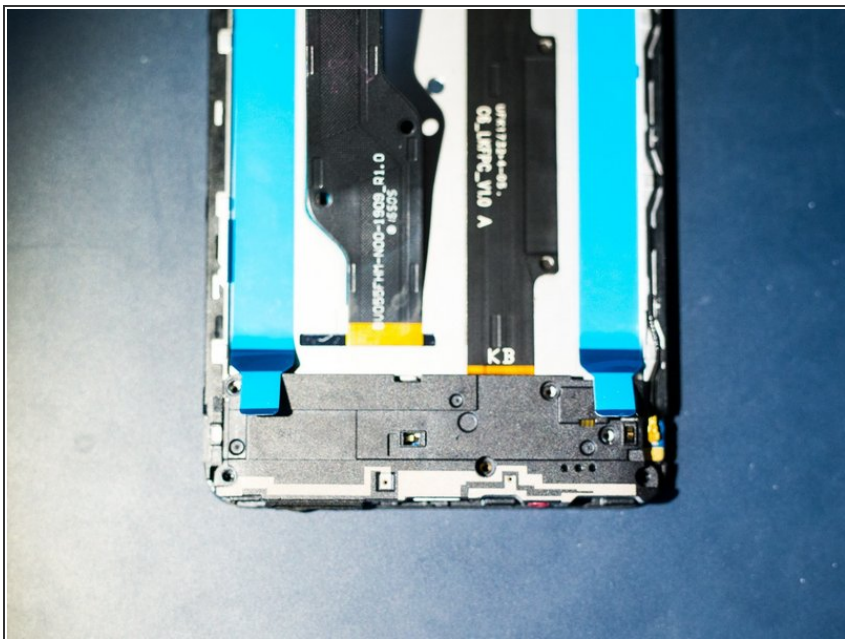
- If previously removed, insert the LED bar (red circle)
- Insert the charging board into proper position and tighten (blue circle)

Step 18



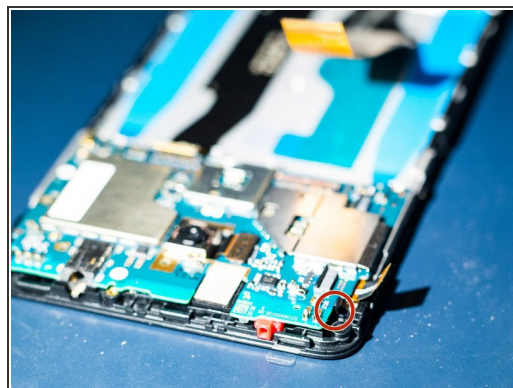
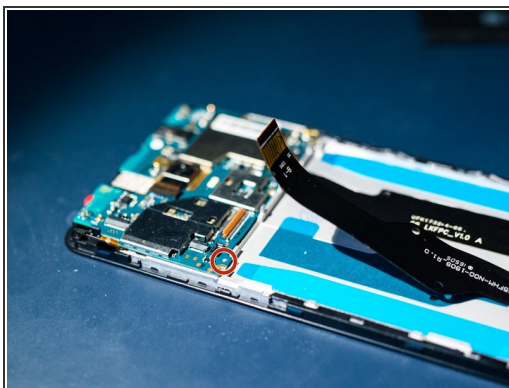
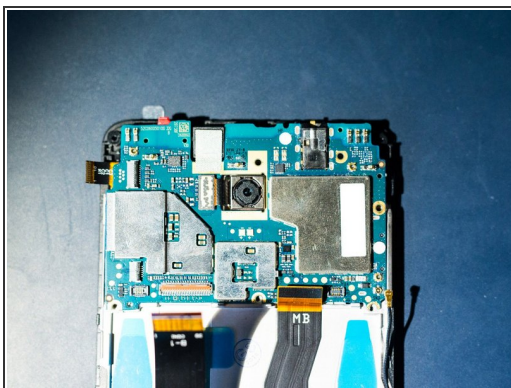
- Remove the blue protective strip from the corresponding adhesive surface. Insert the ribbon cable into the power supply
- Press the cable flat onto the adhesive area
- Ensure everything is properly aligned

Step 19



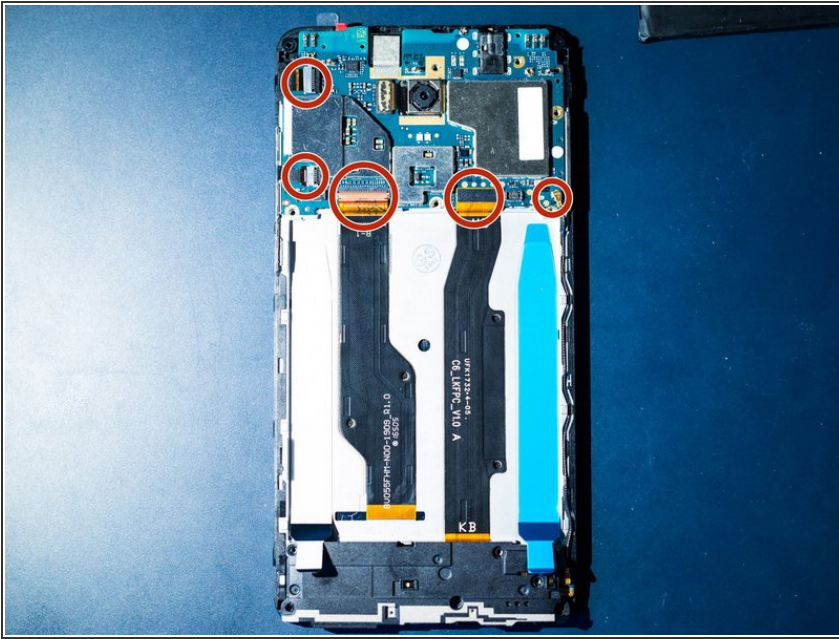
- Install the lower plastic cover and screw it in place

Step 20



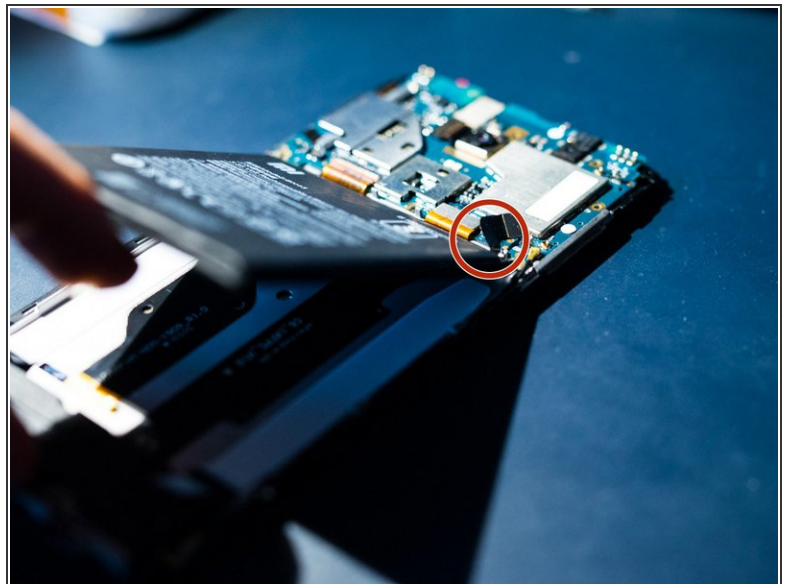
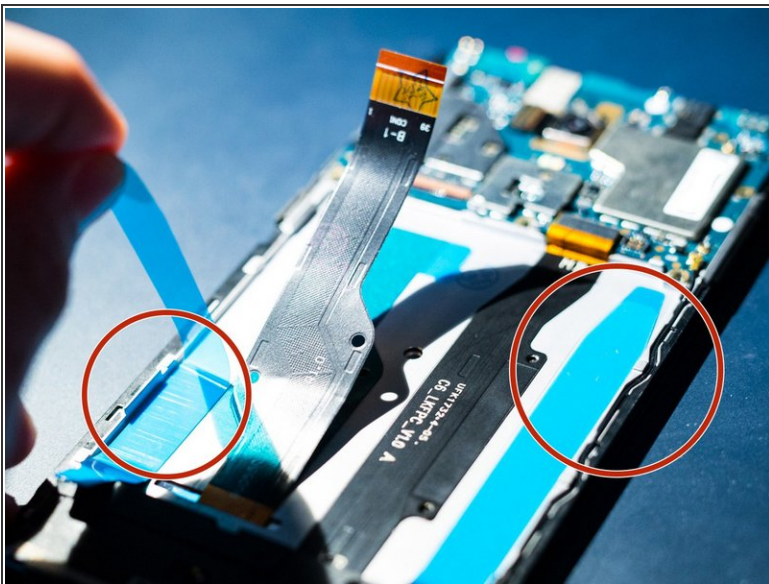
- Insert the motherboard
- Use the metal pin and the plastic hook to check proper alignment.

Step 21



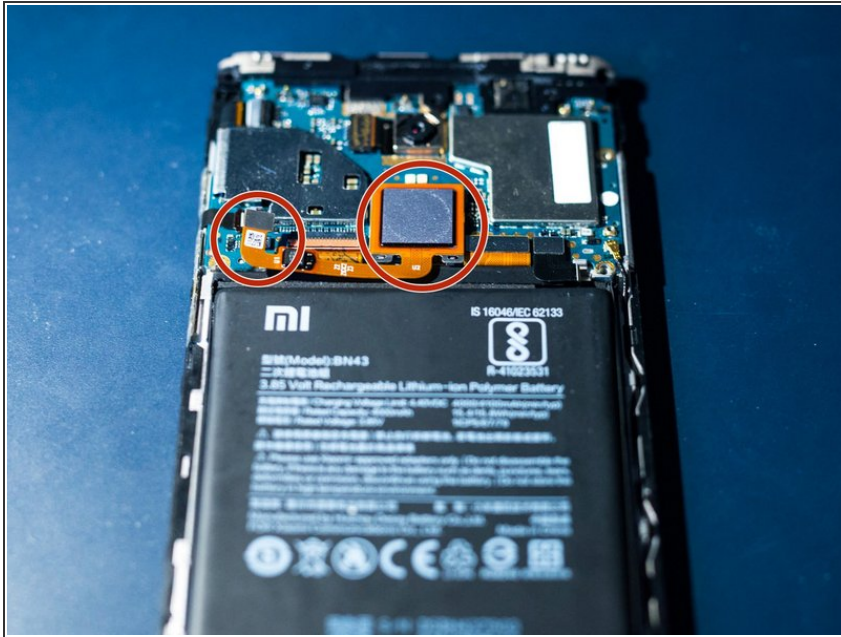
- Reconnect all connectors

Step 22 — Replacing the battery



- Remove the cover from the two adhesive strips for the battery
- Insert the battery and reconnect it.

Step 23



- Press the fingerprint scanner back into its position.
- Press the display back into the housing. Done!

Repeat the steps in reverse order to reassemble your device.