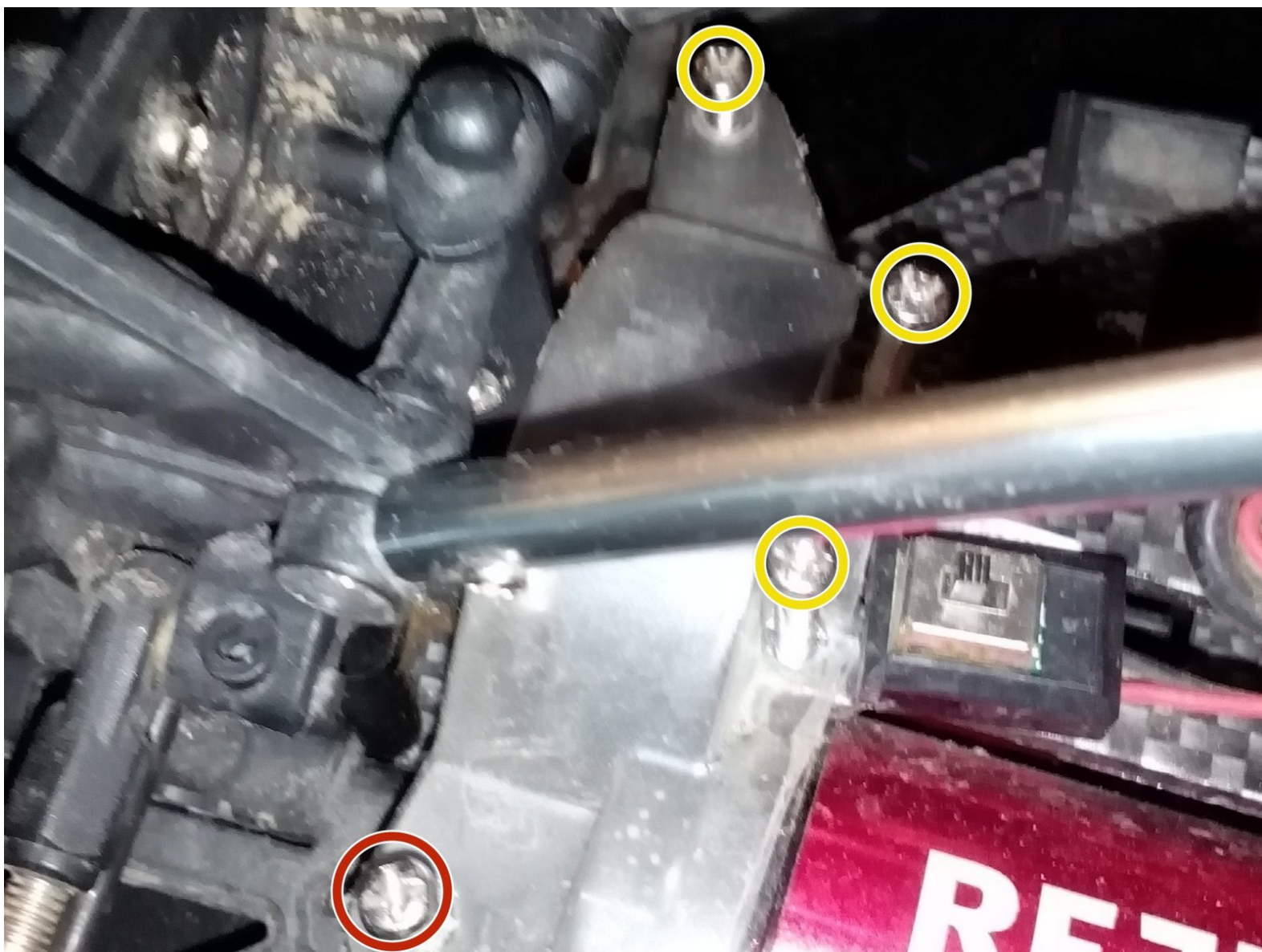




Reely Carbon Fighter Brushless Motorritzel Replacement

It shows how the motor pinion can be changed in a few minutes, and the distance to the main gear can be adjusted.

Written By: Leonard Kesting



This document was generated on 2019-09-22 01:54:28 PM (MST).

INTRODUCTION

Since the original part is made of brass and thus too soft for its intended purpose, it is subject to high wear (even when driven with the standard plastic main gear).



TOOLS:

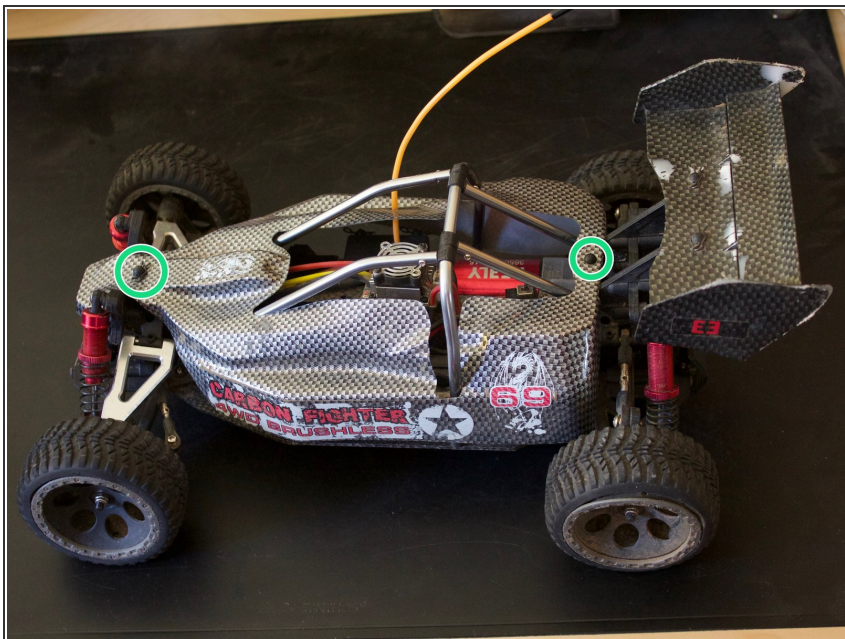
- [Phillips #1 Screwdriver](#) (1)
- [1.5mm Hex Screwdriver](#) (1)



PARTS:

- [New Item](#) (1)
Innendurchmesser: 3,2mm / Anzahl der Zähne: 24 beim Original, kann aber durch andere Übersetzungen ersetzt werden

Step 1 — trim loss



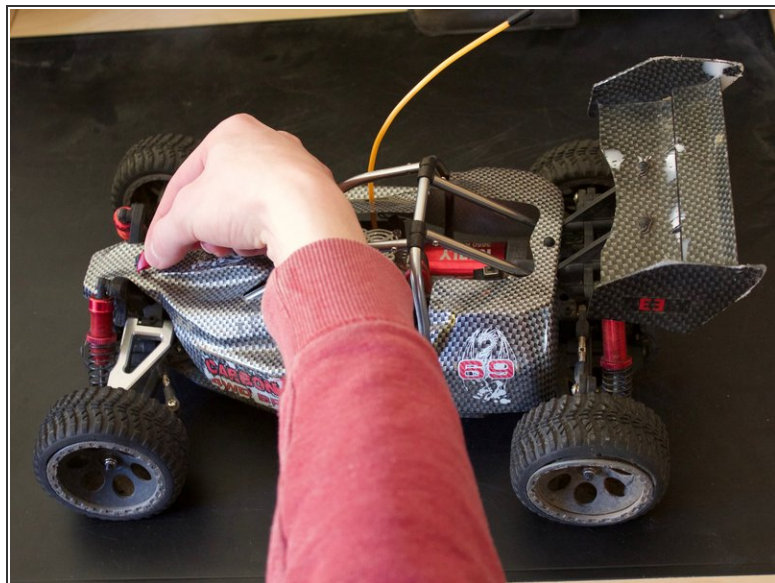
- These two pins must be removed.

Step 2



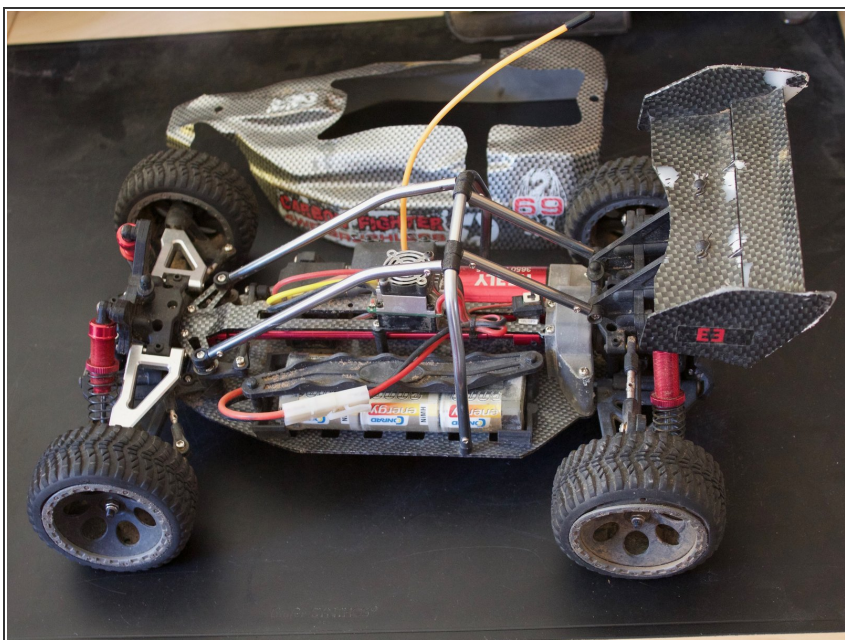
- Here, a screwdriver or other stable thin object (in the picture: letter opener) can be helpful

Step 3



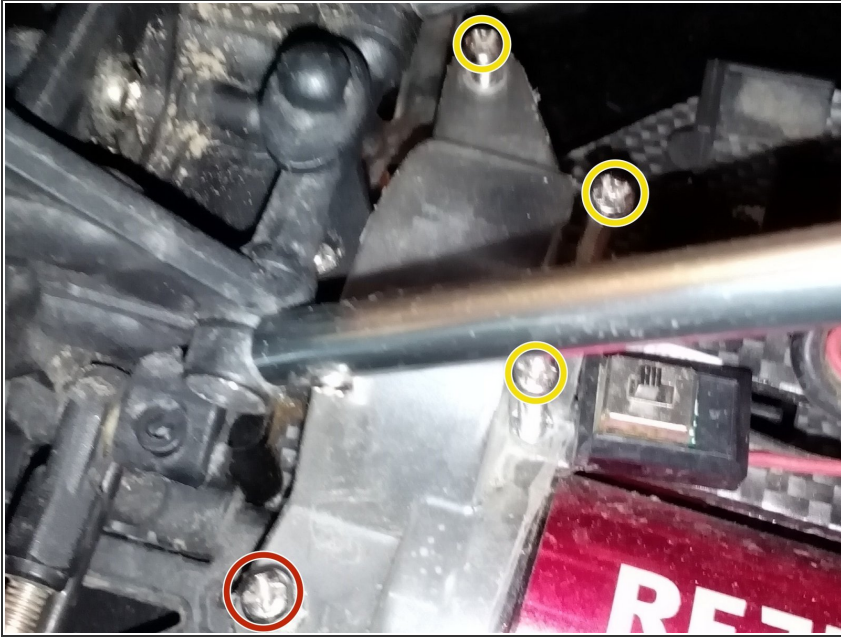
- i** TIP: if you remove the cladding more often (for example, for thorough cleaning), it may be helpful to provide the splints with some insulating tape, so the use of tools is unnecessary

Step 4



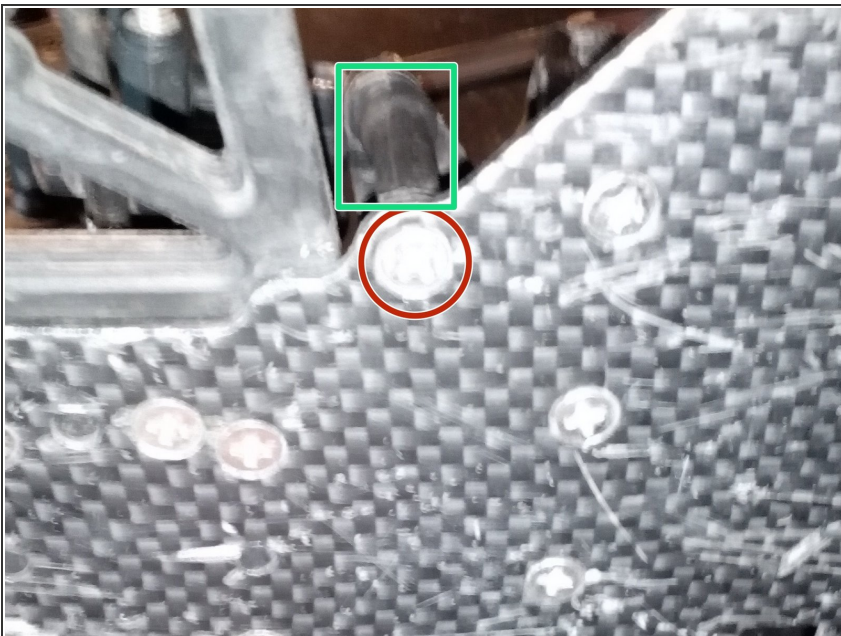
- The panel is now dismantled

Step 5 — pinion



- If there is an additional main sprocket and engine sprocket protection (not serial condition), this must be removed first. To do this, all marked screws must be turned out with a PH1 screwdriver. These are two different screws.
- When the vehicle is in the delivery state, only the red marked screw has to be removed.

Step 6



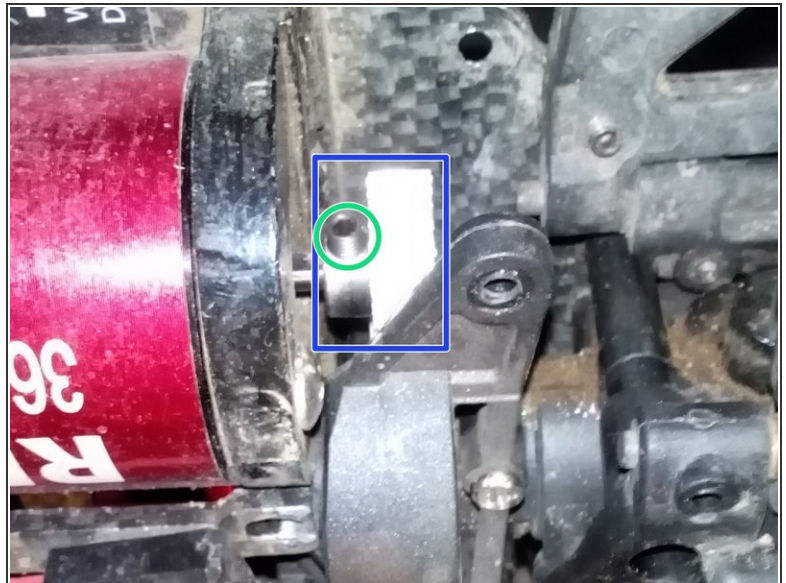
- Then remove the red marked screw (PH1) on the underside (hold the green marked part),
- to take out the green marked column / column.

Step 7



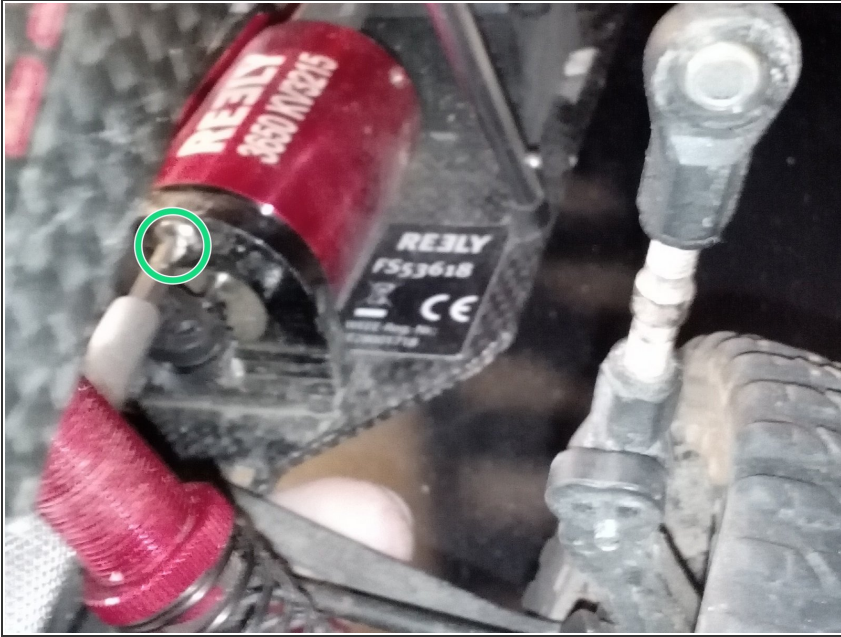
- To loosen the pinion, the grub screw that fixes it to the motor output shaft must be loosened. For this you need a 1.5mm Imbus.
- The rod to adjust the fall on the right rear wheel (direction of travel) should be solved on the vehicle side to remove the old part better (in the photo already done) and the new one to lead.
- Then it can simply be pulled back and removed

Step 8



- When pushing the new part onto the shaft, please note that it has a flattened side. At this the grub screw (marked in green) should rest.

Step 9



⚠ Then the distance of the two gears to each other should be adjusted correctly. Too big a game makes sure that the teeth consume early, with too little play it can not be turned anymore.

- To adjust, slightly open the green marked screw and tilt the motor in the desired direction.

Please dispose of the old part properly! Best in the metal container on the recycling center, so it can be recycled. It has nothing to do with household waste. Work the steps in reverse order to reassemble the vehicle.