



Reflowing solder joints on a TEAC GSA-5300 stereo integrated amplifier

Reflowing the solder joints on the left bank, speaker wire terminal block, due to cracking.

Written By: zakk



INTRODUCTION

As this amplifier is almost 40 odd years old, the solder joints on the left bank, speaker wire terminal block, have cracked and now require the solder joints to be reflowed. This is a very common problem on old amplifiers.





TOOLS:

- [Phillips #1 Screwdriver](#) (1)
 - [Phillips #2 Screwdriver](#) (1)
 - [Soldering Iron](#) (1)
 - [Solder](#) (1)
-

Step 1 — Reflowing solder joints on a TEAC GSA-5300 stereo integrated amplifier



 I used 1000v insulated electricians screwdrivers, as I like to be safe when working on electronics that have a higher risk of zapping me.

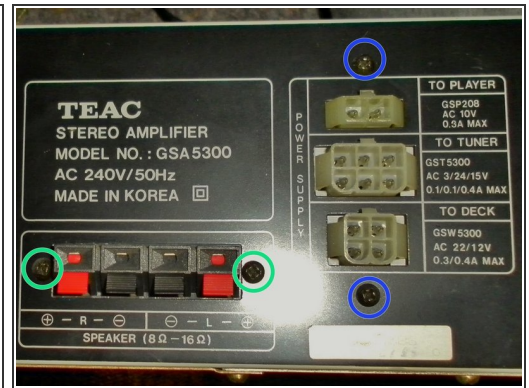
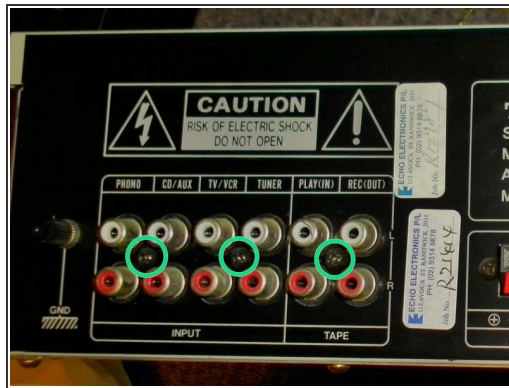
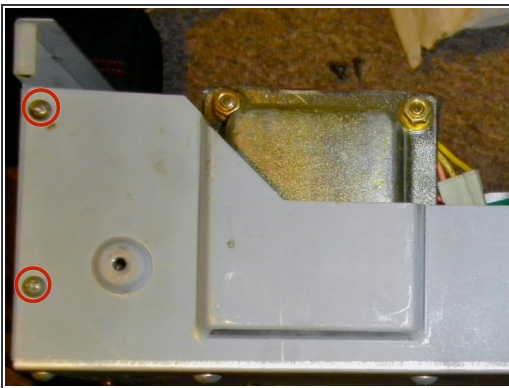
 Amplifiers can have a high current stored in the large internal capacitors. Even with the insulated screwdrivers, please be sensible and ensure the amplifier is unplugged and try to leave it without power for a day or so. Also, read up on working with capacitors before you start work.

Step 2



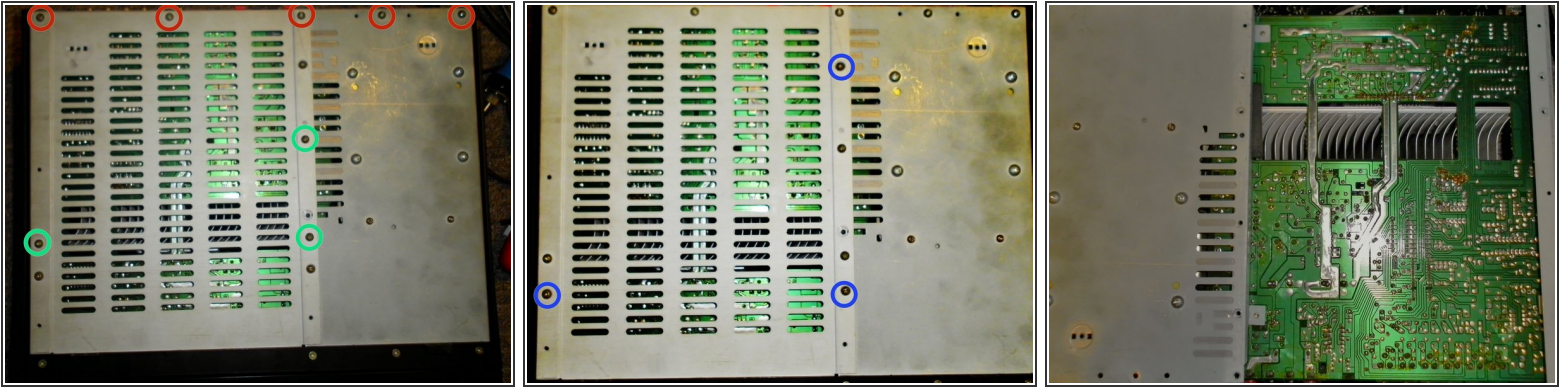
- Turn the amplifier over onto its side and you will find two Phillips #2 screws holding the main black casing on, on each side of the amplifier. Remove them using the Phillips #2 screwdriver.

Step 3



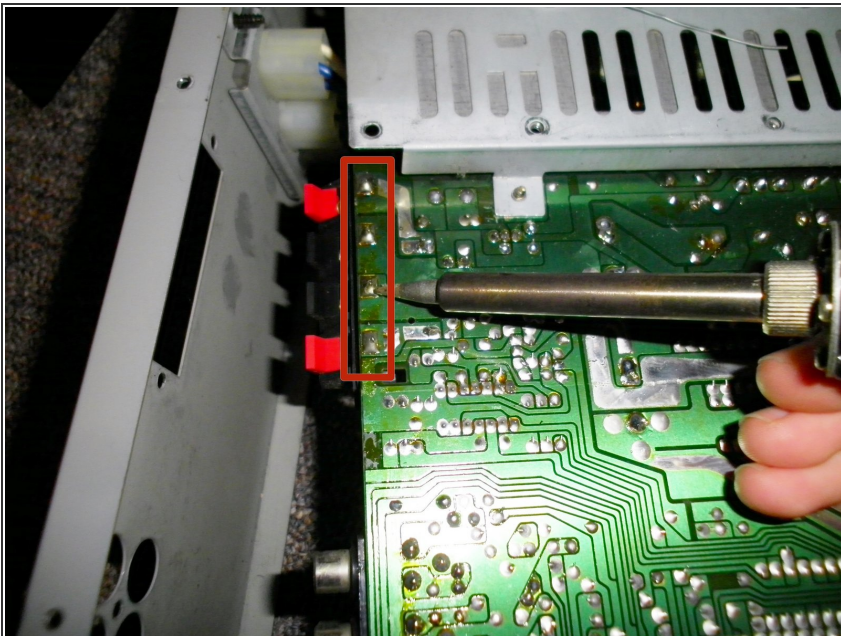
- Once the main casing is removed, you'll need to remove the back panel. Keep the amplifier on its side and remove the two, Phillips #1 screws holding it on, on both sides of the amplifier.
- You'll also need to turn the amplifier over, and remove 5 additional, Phillips #1 screws from the back of the amplifier.
- Leave these screws in, as they aren't required to be removed, in order to take the back panel off.

Step 4



- Now, to completely remove the back panel and the left hand back service panel, you'll need to remove 5 Phillips #1 screws.
- To remove the service panel, you need to remove a further 3, Phillips #1 screws. once you have done this, you can remove the back panel and the service panel.
- Leave these three screw in as the service panel has larges holes for these three screws and undoing them, undoes the circuit boards stand offs.

Step 5



- Now to get down to the reflowing. Put the tip of the soldering iron, onto each of the solder joints. When they melt (Aprox. 10 seconds using a 30 Watt soldering iron), add a little extra solder to the molten solder pool.
- Once you have reflowed the solder joints, reassemble the amplifier and connect the speakers etc, to test if it has worked.



Don't hold the soldering iron on the circuit board as you can damage it and the terminal block.

To reassemble your device, follow these instructions in reverse order.