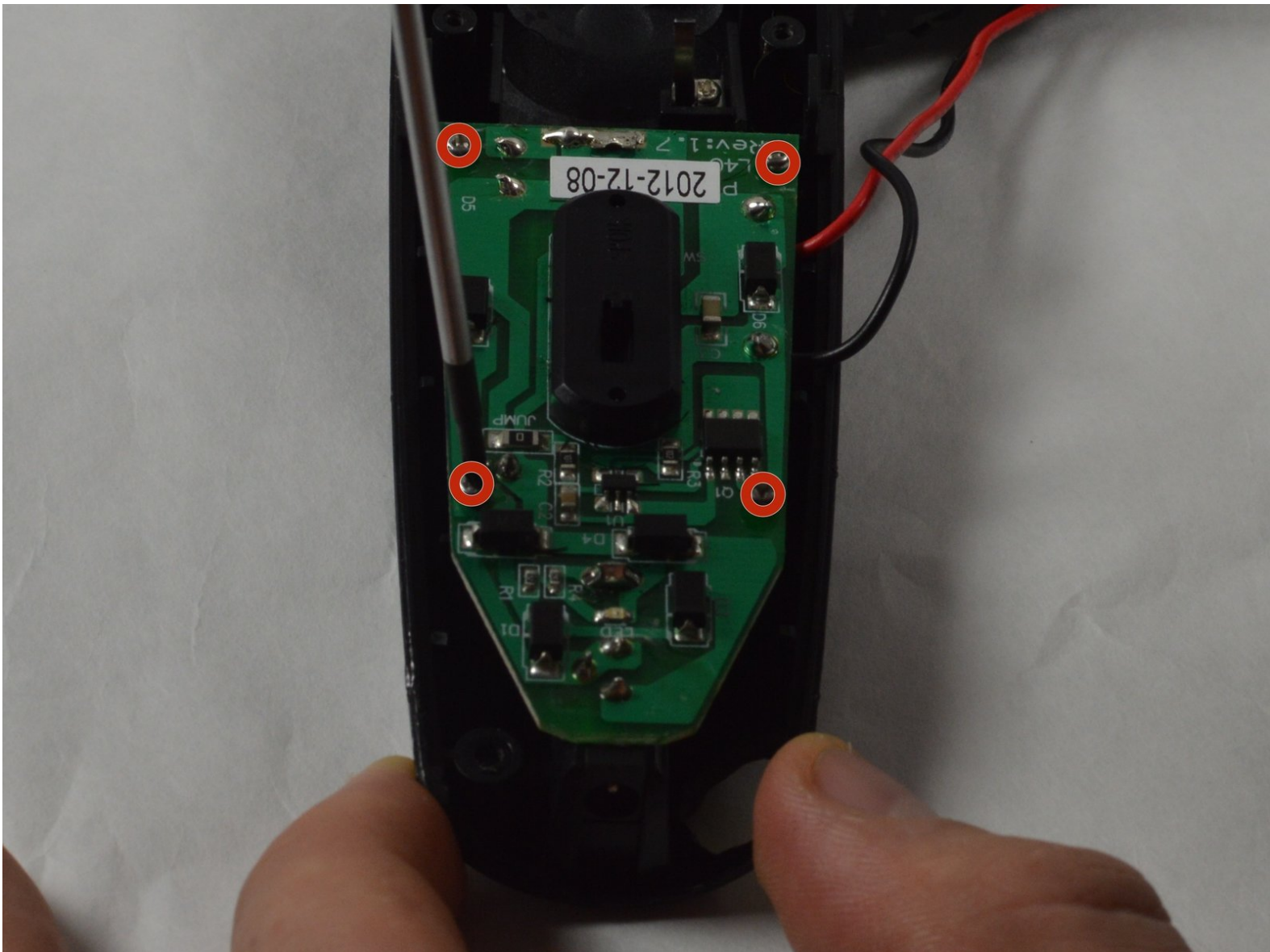




Remington MB4040 Battery Replacement

Guide to show battery replacement.

Written By: Cameron Carnahan



INTRODUCTION

The battery is where the charge is stored and allows the motor to run. The battery is connected to the motor through the motherboard.



TOOLS:

- [Heavy-Duty Spudger](#) (1)
 - [Phillips #00 Screwdriver](#) (1)
 - [iFixit Opening Tools](#) (1)
 - [Small Needle Nose Pliers](#) (1)
 - [Tweezers](#) (1)
 - [Soldering Workstation](#) (1)
-

Step 1 — Remove Blade Assembly



- Press the black button below the blade to remove the blade.

Step 2 — Remove Back Cover Hardware



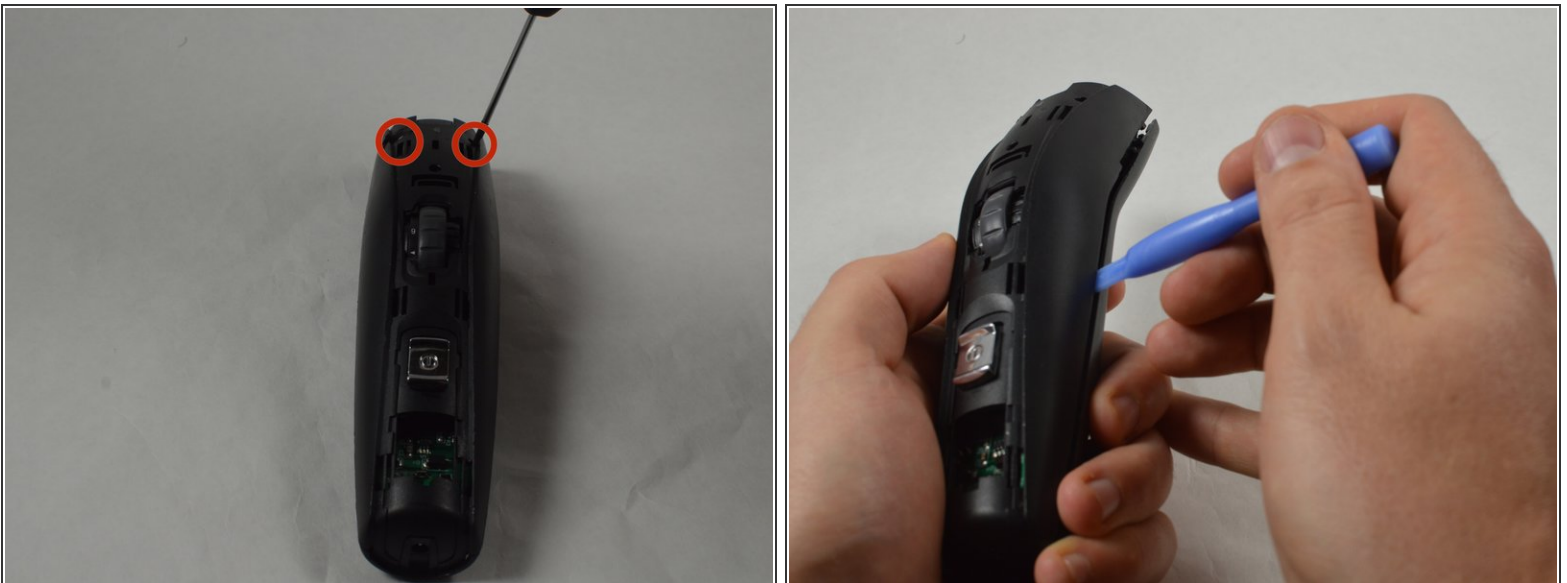
- Place the device so the back of the product is facing up.
- Remove the two 11.0 mm PH00 screws from the black plastic housing at the bottom of the device.

Step 3 — Remove Front Cover Hardware



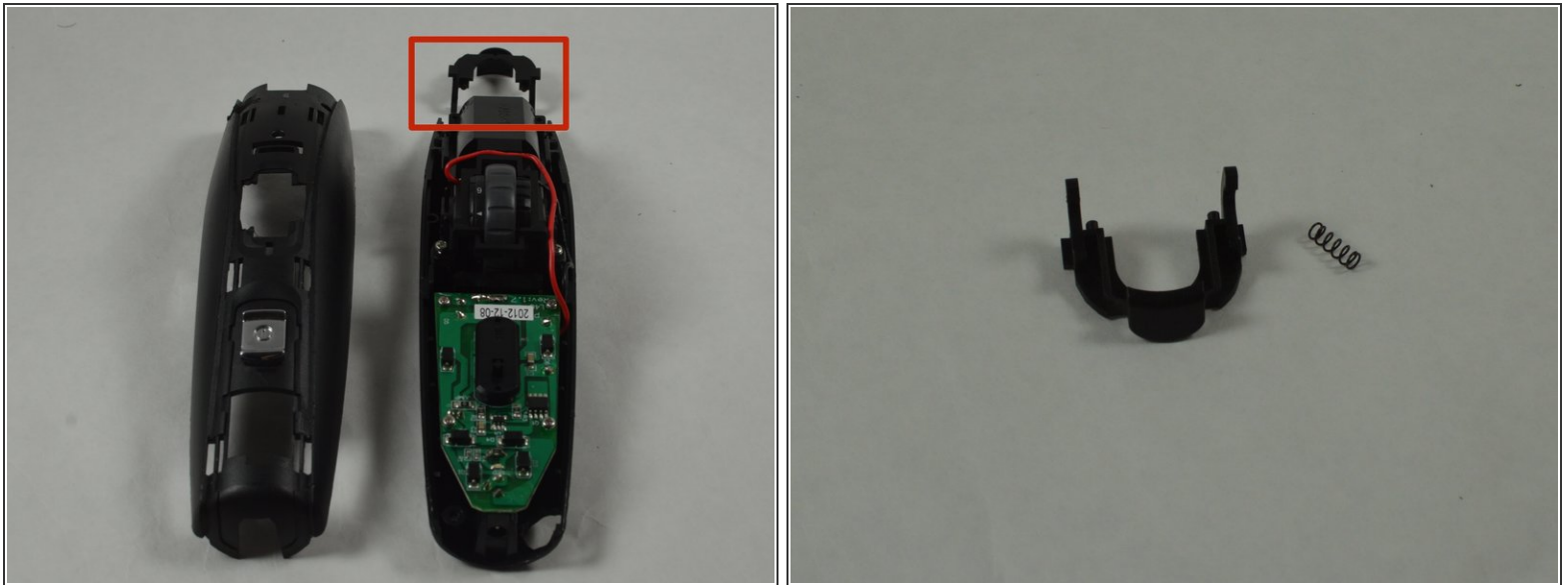
- Remove the chrome plated plastic piece by using the plastic opening tool to pry it from the housing assembly.
- Remove the small clear plastic piece that covers the zoom wheel numbers.

Step 4 — Front Cover (cont.)



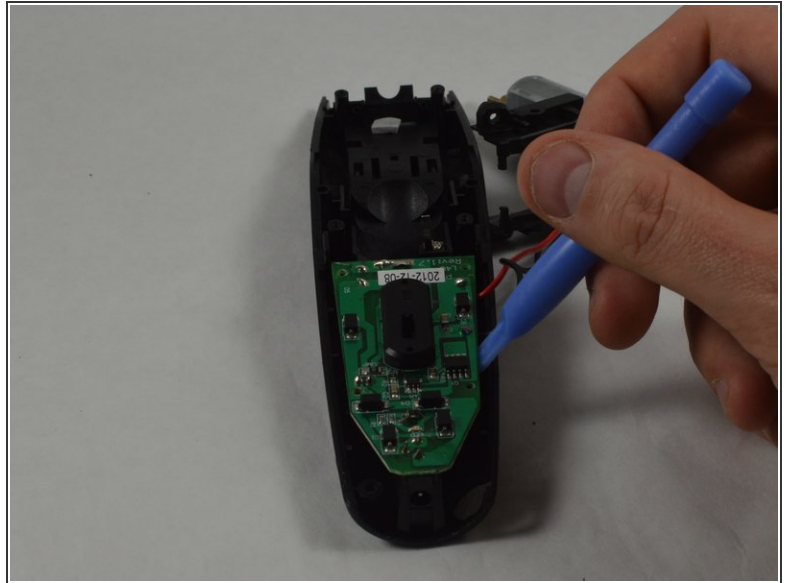
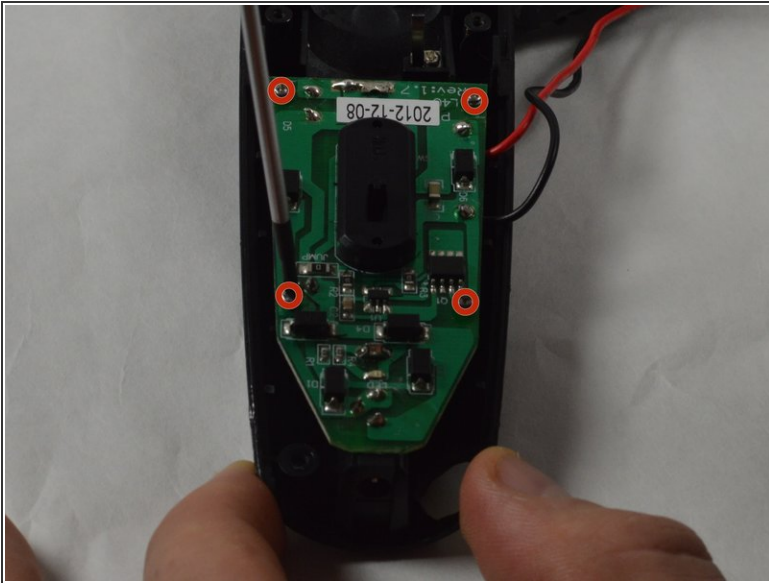
- Remove the two 16.0 mm PH00 screws from the front cover.
- Use the blue plastic opening tool to pry apart the two halves of the device.

Step 5 — Blade Button Removal



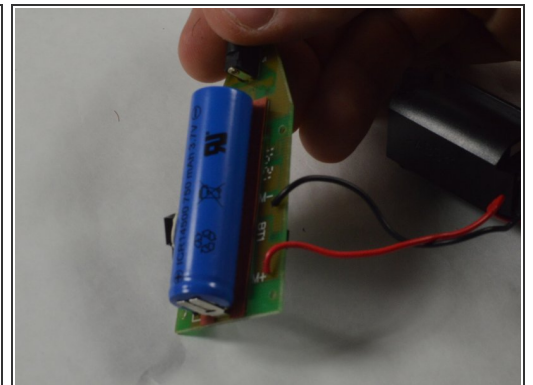
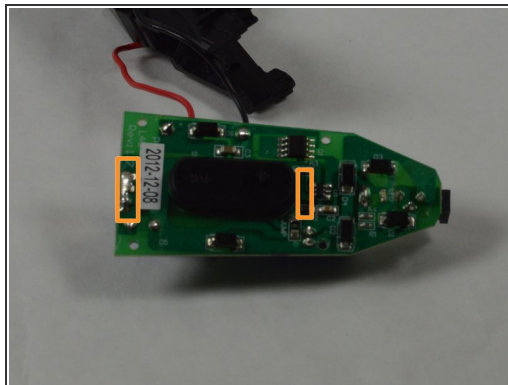
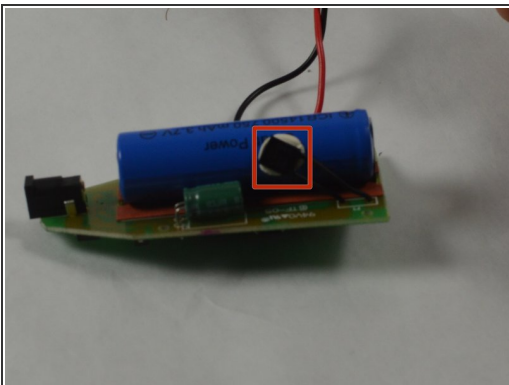
- Remove the black blade button and the two 10.0 mm springs, which are sandwiched between the cover assembly halves.
- ⓘ The blade button is sandwiched between the halves and the two springs may fall out when the halves are separated.

Step 6 — Remove Motherboard



- Remove the four 9.0 mm PH00 screws from the motherboard.
- Use the plastic opening tool to remove the motherboard from its housing.
- ⓘ This can be completed with the [Remington MB4040 Zoom Wheel Replacement](#) installed or removed. Just adjust the zoom wheel until it no longer covers the motherboard.

Step 7 — Remove Battery



- Remove the thermal switch from the battery by using the spudger to pry it from the adhesive.
- Remove the battery by desoldering the battery from the motherboard.
- ⓘ Soldering tabs hold the battery onto the motherboard.

To reassemble your device, follow these instructions in reverse order.