



# Remington MB4040 Blade Replacement

Replace a dull blade with a fresh sharp blade.

Written By: Cameron Carnahan



---

## INTRODUCTION

This guide will systematically explain how to replace the shaving blade of the Remington MB4040. A rough or irritating shave is most likely caused by a dull blade. The replacement of this dull blade will allow for a more comfortable shave.



### TOOLS:

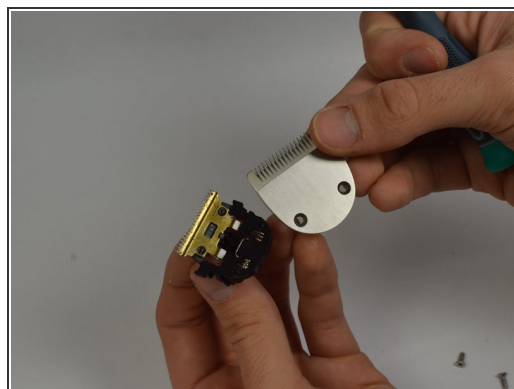
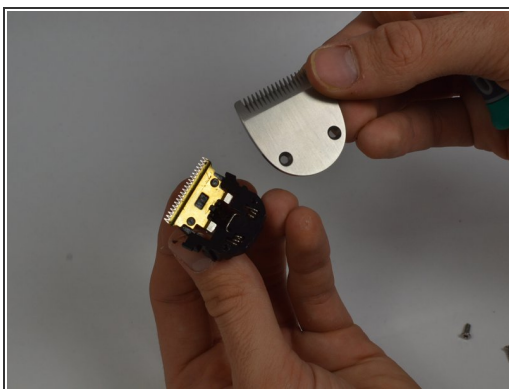
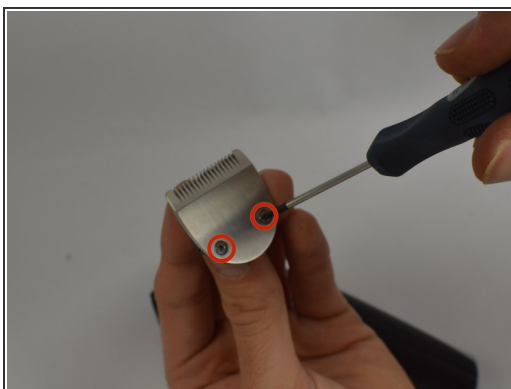
- [Phillips #00 Screwdriver](#) (1)
-

## Step 1 — Blade Removal



- Press the black button to release the blade from its locked position.

## Step 2



- Remove the two 8.0 mm PH00 Phillips head screws from the blade assembly.
- Detach the silver blade from the blade assembly and replace with the new blade.

To reassemble your device, follow these instructions in reverse order.