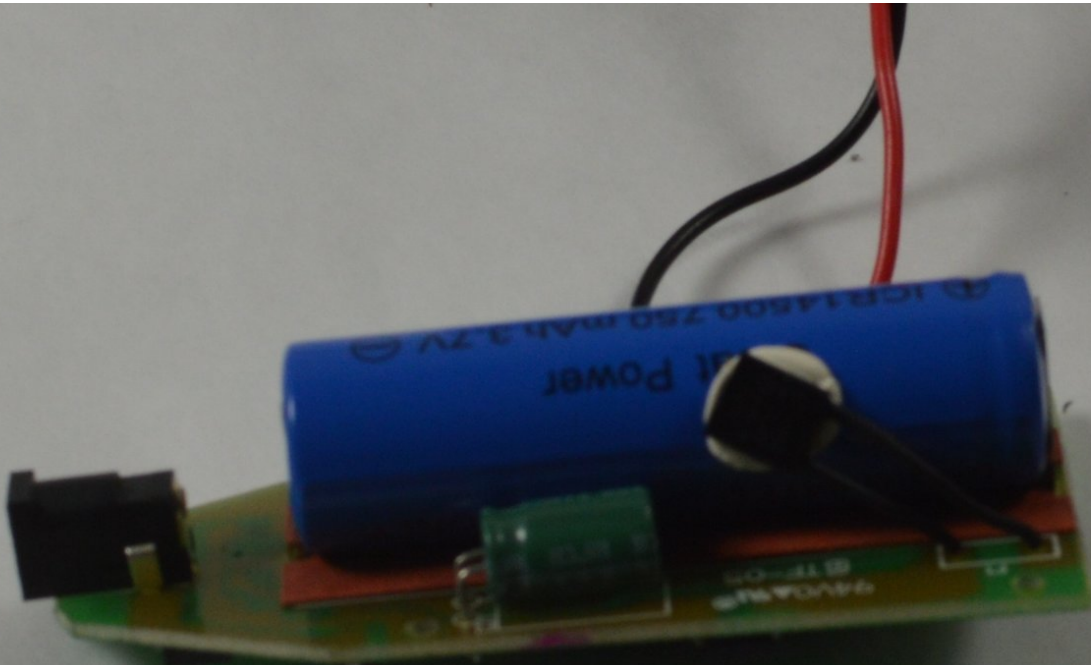




# Remington MB4040 Thermal Switch Replacement

Replacing the thermal switch that is attached to the battery.

Written By: Cameron Carnahan



---

## INTRODUCTION

The thermal switch allows for automatic shut-off if the battery temperature exceeds a specified limit.

---

### TOOLS:

- [Heavy-Duty Spudger](#) (1)
  - [Phillips #00 Screwdriver](#) (1)
  - [iFixit Opening Tools](#) (1)
  - [Small Needle Nose Pliers](#) (1)
  - [Tweezers](#) (1)
-

## Step 1 — Remove Blade Assembly



- Press the black button below the blade to remove the blade.

## Step 2 — Remove Back Cover Hardware



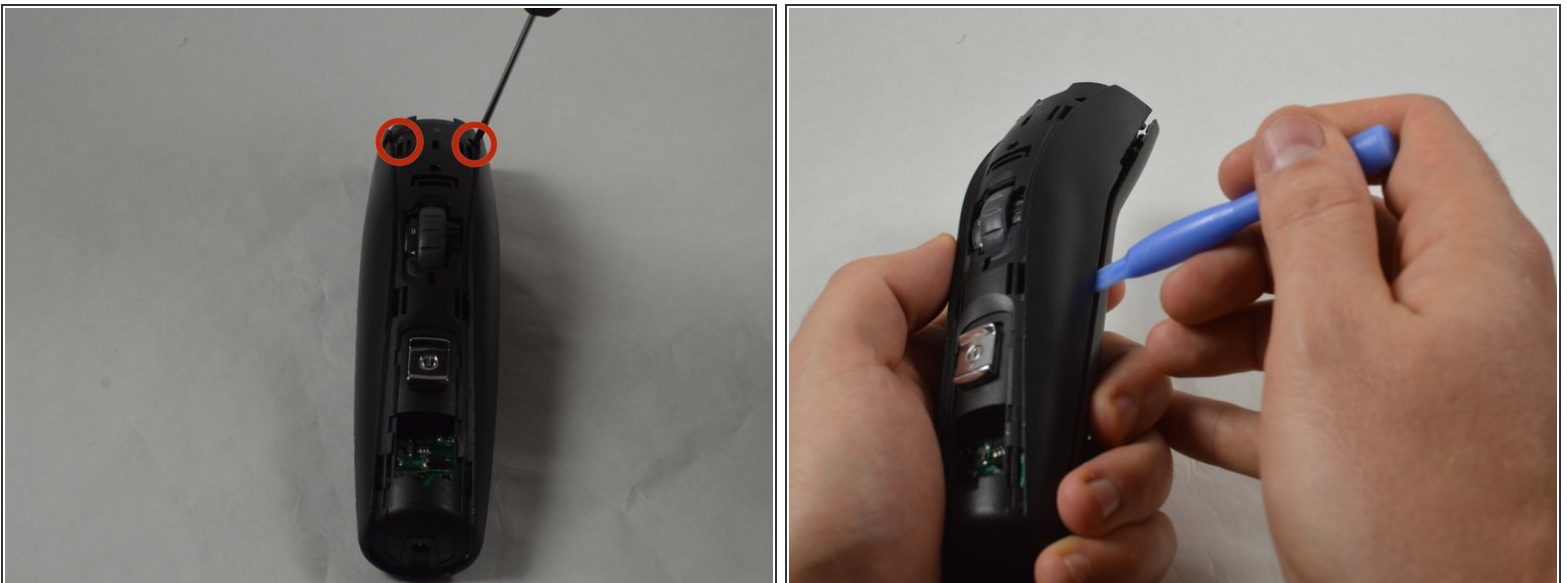
- Place the device so the back of the product is facing up.
- Remove the two 11.0 mm PH00 screws from the black plastic housing at the bottom of the device.

### Step 3 — Remove Front Cover Hardware



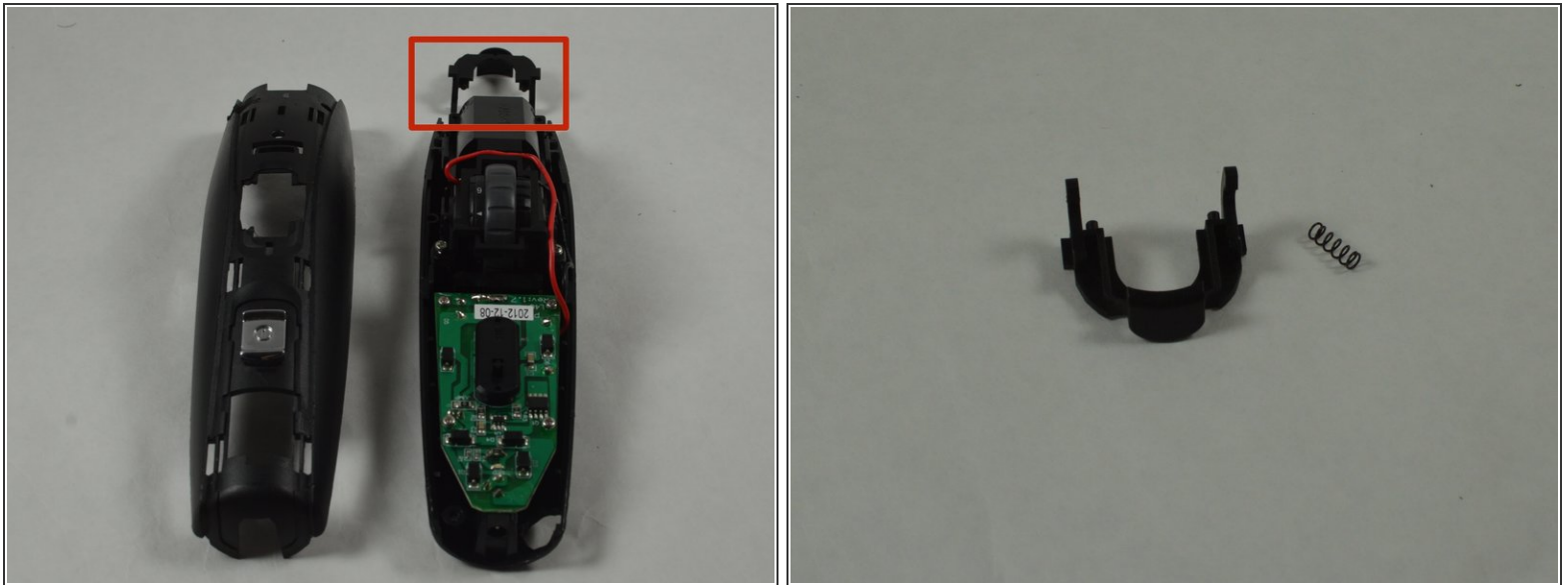
- Remove the chrome plated plastic piece by using the plastic opening tool to pry it from the housing assembly.
- Remove the small clear plastic piece that covers the zoom wheel numbers.

### Step 4 — Front Cover (cont.)



- Remove the two 16.0 mm PH00 screws from the front cover.
- Use the blue plastic opening tool to pry apart the two halves of the device.

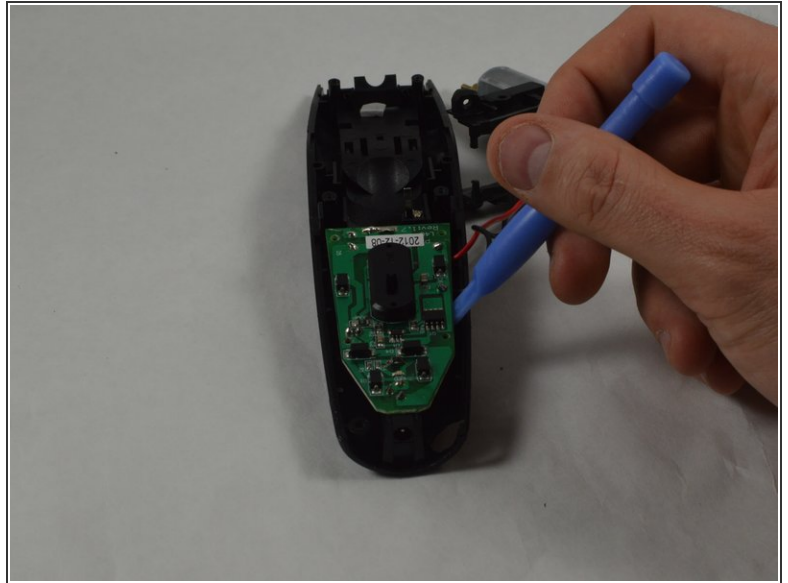
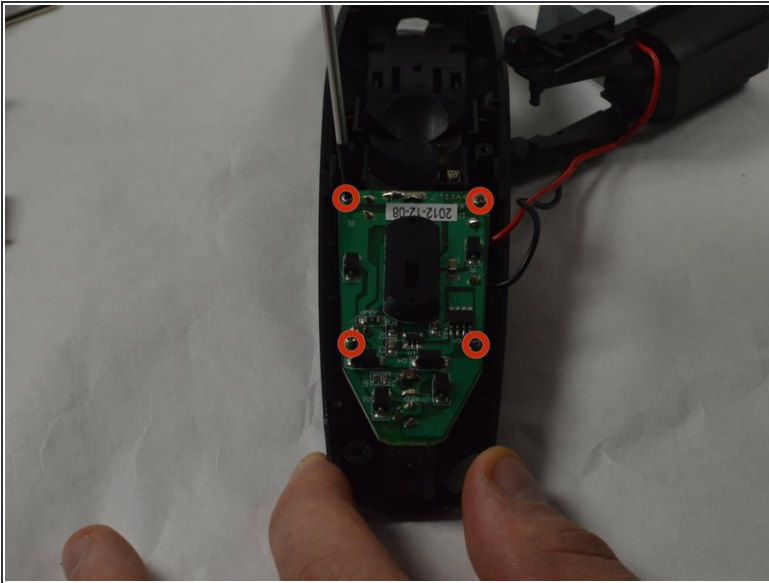
## Step 5 — Blade Button Removal



- Remove the black blade button and the two 10.0 mm springs, which are sandwiched between the cover assembly halves.
- ⓘ The blade button is sandwiched between the halves and the two springs may fall out when the halves are separated.

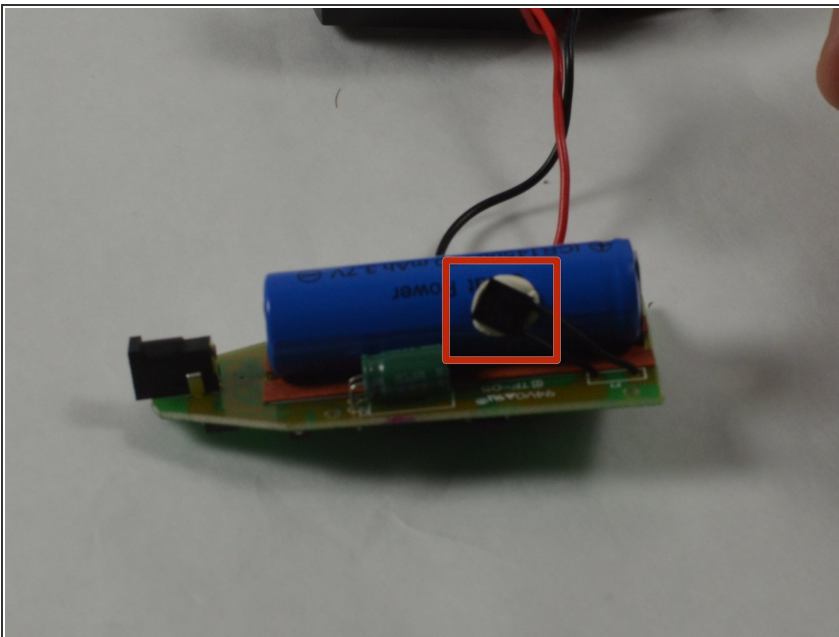


## Step 6 — Remove Motherboard



- Remove the four 9.0 mm PH00 screws.
- Remove the motherboard by using the plastic opening tool.
- ⓘ This can be performed with the [Remington MB4040 Zoom Wheel Replacement](#) installed or removed.

## Step 7 — Remove Thermal Switch



- Separate the thermal switch from the battery by using a spudger to pry it from the adhesive.
- ⓘ Use a low temperature RTV to readhere the thermal switch to the battery.
- Remove the soldering holding the thermal switch to the motherboard.

To reassemble your device, follow these instructions in reverse order.