



# Remote shutter mod (wired)

This guide shows a way how to add an option of remote control of shutter via camera's micro USB jack.

Written By: Matej Cermak

## INTRODUCTION

This guide is not complete and not tested by me!

First generation of RX100 did not feature Sony's "Multi-terminal" port and therefore there is not any option to remote the camera's shutter

This guide shows a way how to add an option of remote control of shutter via camera's micro USB port.

You need some advanced (dis)assembling and soldering skills.

The point of this mod is just ability to simulate pressing the shutter button, using extension from shutter button line to usb port. This mod will not allow you to use a focus button, while you have just single unused pin in usb port. Other pins are in use, so it's not possible to use more pins of usb port. But you can of course find a pin on mainboard which is connected to focus button and line it out of the camera another way.



### TOOLS:

- [Phillips #0 Screwdriver](#) (1)
- [Soldering Iron](#) (1)
- [Wire stripper/crimping tool](#) (1)  
*or knife*



### PARTS:

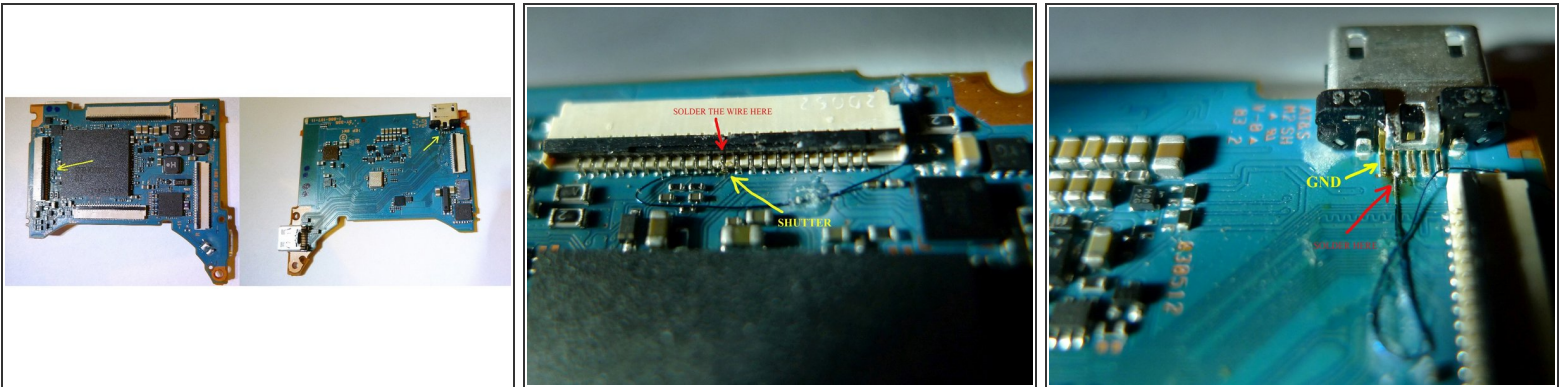
- [Thin Electrical Wire](#) (1)
- [micro USB male connector](#) (1)  
*or cable*

## Step 1 — Take the camera apart and remove the main board



- I will hopefully add more details in the future.

## Step 2 — Solder a wire onto a main board



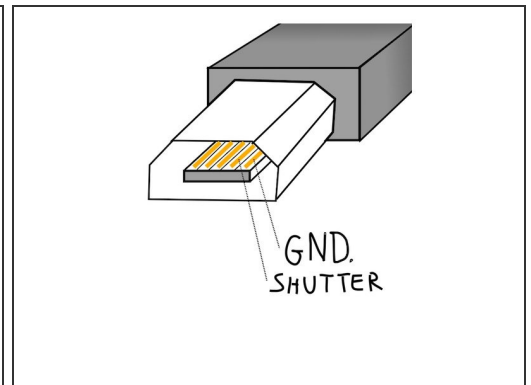
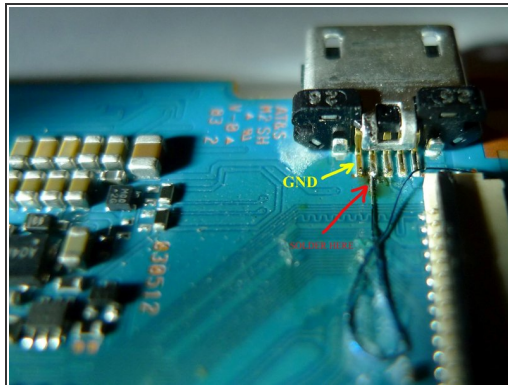
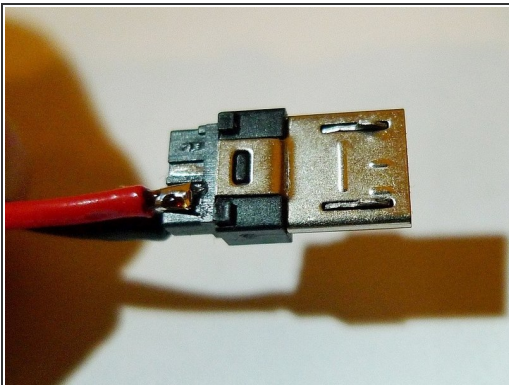
- Use thin short piece of wire and decide where to put it so it will not be in interference with other components inside assembled camera. The wire will be connected to both sides of the main board.
- Cut required length of the wire and cut the insulation on its ends.
- Optional: use some electrical adhesive tape (not very sticky) to hold the wire on the right place while soldering. Watch where are you putting it - not over any small sensitive components
- Solder the wire to the pins as on the pictures

### Step 3 — Put the camera together



- Insert the modified mainboard, put everything to its place and close the camera. Simply reverse the disassembly procedure

### Step 4 — Create your custom shutter connector



- Use some standard **micro USB** male connector/cable
- You can connect some remote shutter to it, or just a button which allows the lines to connect.
- Pinout as is on the picture
  - *sorry for the drawing of microUSB, it looks like half female (because of the inside) and half male. It's supposed to be male connector. But the positions of the pins are correct.*

I am not author of the mod, but I will definitely try it in the future.

Pictures are taken from here:

<http://przewodnicy.zakopane.pl/rozne/RX1...>

Short demonstration is visible here:

[https://www.youtube.com/watch?v=3m\\_yFcxR...](https://www.youtube.com/watch?v=3m_yFcxR...)

Unfortunately I don't have an option to use any soldering iron or my small tools at the moment, so I will not try it during this year (2017). But it's good to have this guide here.