



Remove Jura Brew unit

Remove the brew unit at Jura Kaffeemaschinen

Written By: VauWeh



INTRODUCTION

The brew unit is the central component of a coffee machine. It requires regular cleaning and maintenance, in particular the seals must be replaced from time to time. Unfortunately, the brew unit is at Jura and construction-type machines of e.g. Krups, AEG not easily accessible. The removal is described here.

Step 1 — Jura Impressa Type C E F opening procedure



- The instructions are suitable for nearly every model of Jura and similar ones e.g. AEG and Krups.

⚠ Unplug!

- Remove the water reservoir.

Step 2



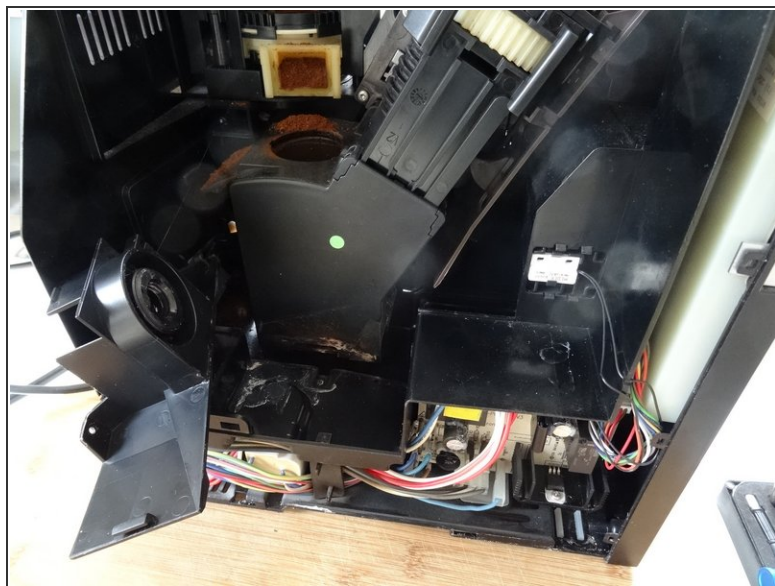
- i** On the rear side is an obstacle: four "oval head screws" looking like rivets. You can remove them using a special oval drive bit. They are sold at iFixit with the tool kits as well as some Jura suppliers or somewhere in the internet. Jura wants to keep us out of our own machines!
- Using an oval head bit you can screw them out. If you haven't got one you can carefully use pliers. It is a good idea to later change the screws for normal ones.
 - Beneath both top side covers are two Torx T15 screws. Remove those. Now lift off the whole top cover. Sometimes it jams and you have to use a bit of force.
 - The side covers must be pushed backwards by about 1 cm. Sometimes this is a little bit difficult to move. If necessary, wedge a plastic opening tool into the gap between the side covers and the front panel. The rear cover can be easily removed.

Step 3 — Brew Unit



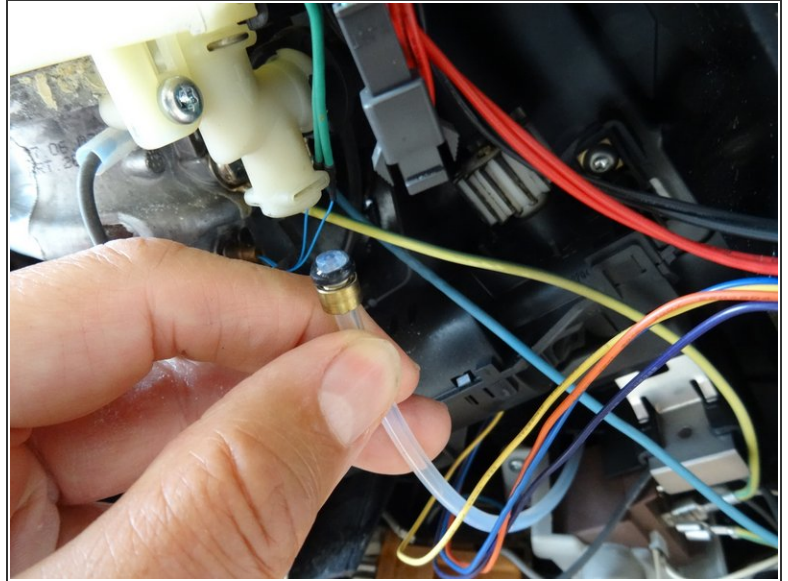
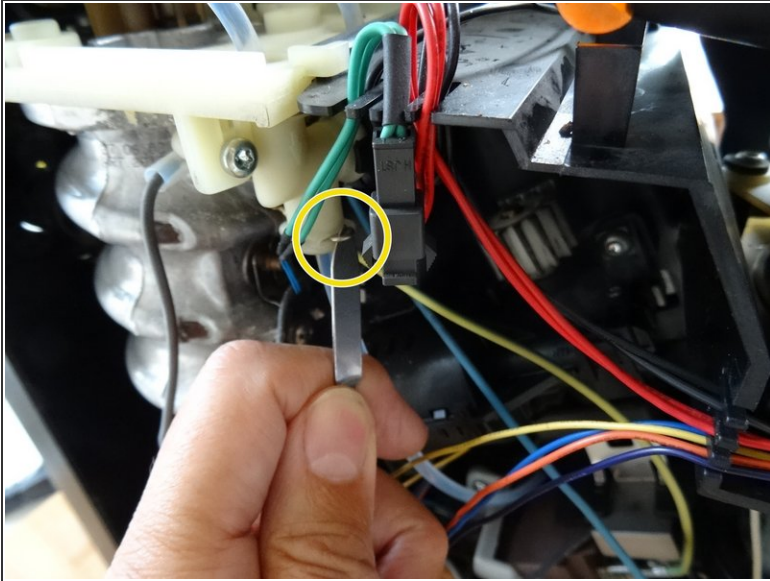
- Slide the coffee funnel up and lift it out. It often sits very tight and you have to pull hard until it becomes free.

Step 4



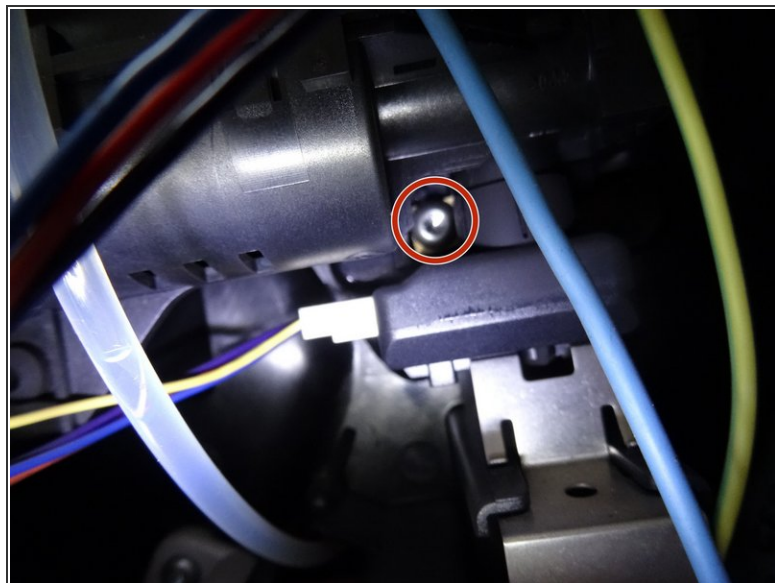
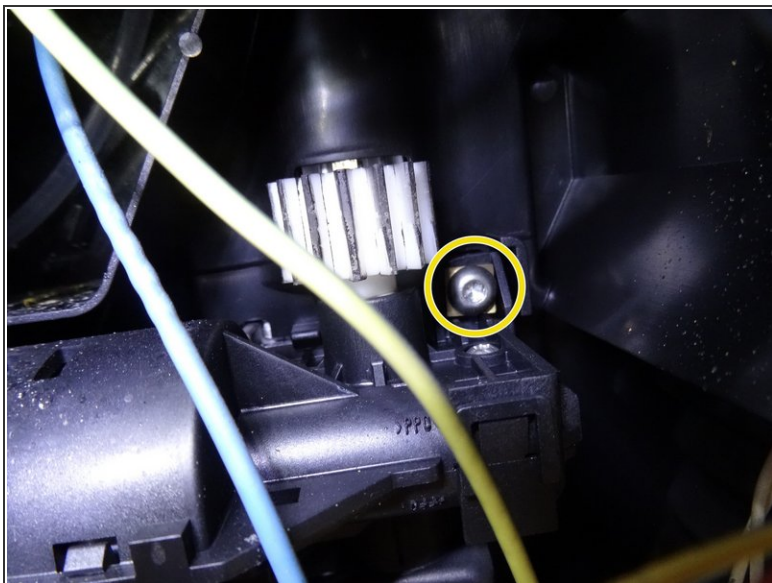
- Remove the Torx T15 screw from the water inlet.
- Lift the water inlet and bend it to the side. The hose can remain connected.

Step 5



- Pull out the clamp on the pressure hose between the steam valve and the brew unit.
- Remove the pressure hose.

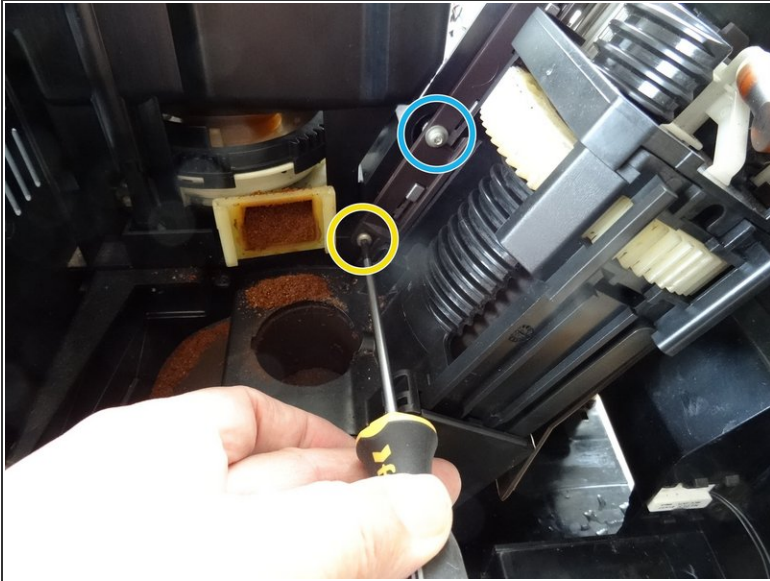
Step 6



i The brew unit is mounted from the motor side with two Torx T20 screws to the left and right of the motor connection, these are located deep on the inside.

- Remove the right screw
- Remove the left screw

Step 7



i The brew unit moves up and down in a slide driven by an elongated rack. There are four Torx T10 screws on the slide. The top left screw must remain attached.

- The screw on the top left must remain.
- Remove the screw on the bottom left
- remove the screw on the bottom right and the one in the middle right

Step 8



- Now the brew unit is free. Tilt it to the bottom but pay attention to the pressure hose. It must be led through an opening. Then push the brew group slightly downward to lift it out of the unit.
- For further disassembly of the brew unit use this manual [JURA Brewgroup Disassembly](#)

Follow the steps in reverse order to assemble your device