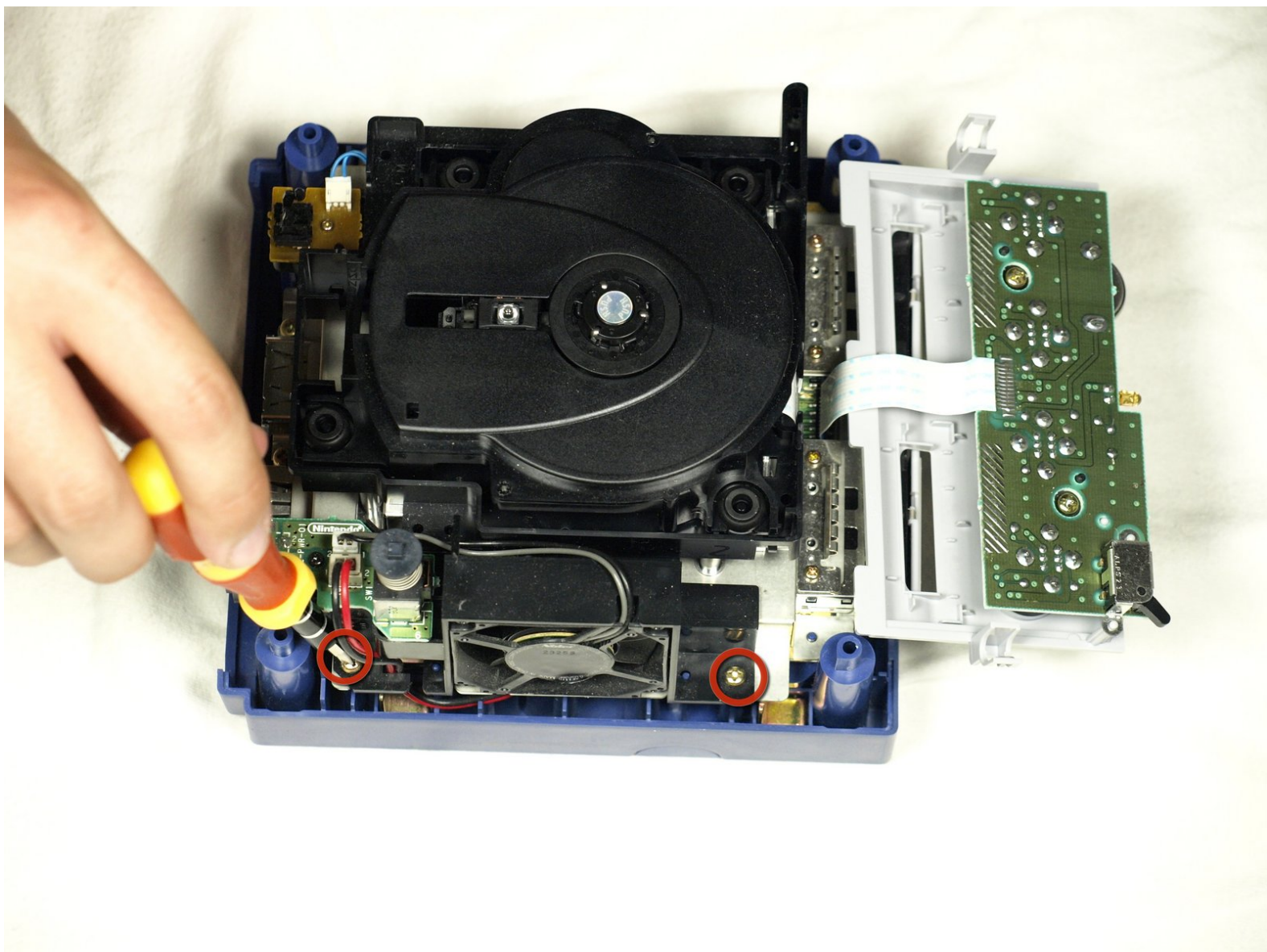




Remove Nintendo GameCube Optical Drive Assembly

Written By: dcarlin



INTRODUCTION

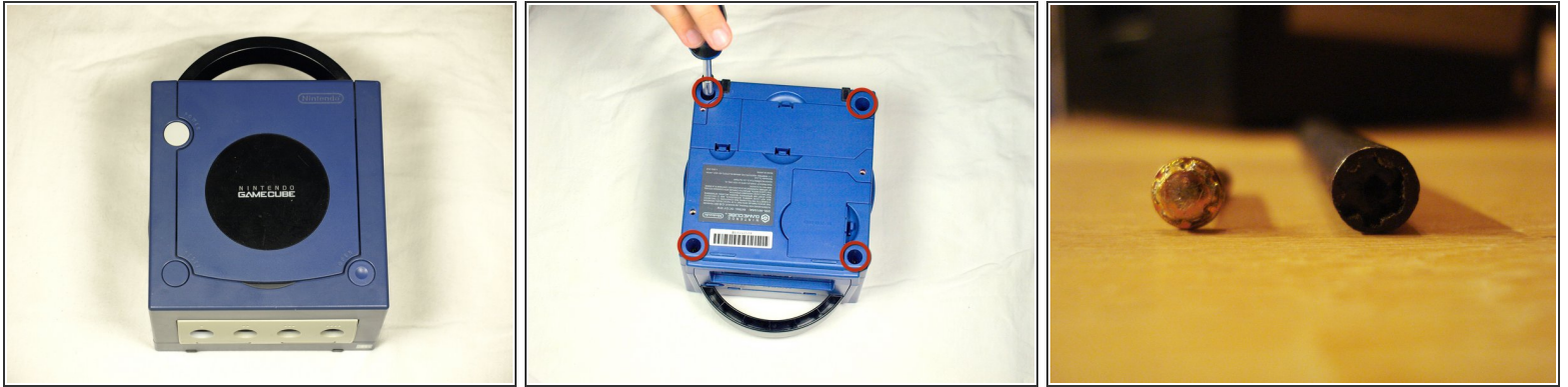
This guide shows how to separate the GameCube's optical drive assembly from the motherboard.



TOOLS:

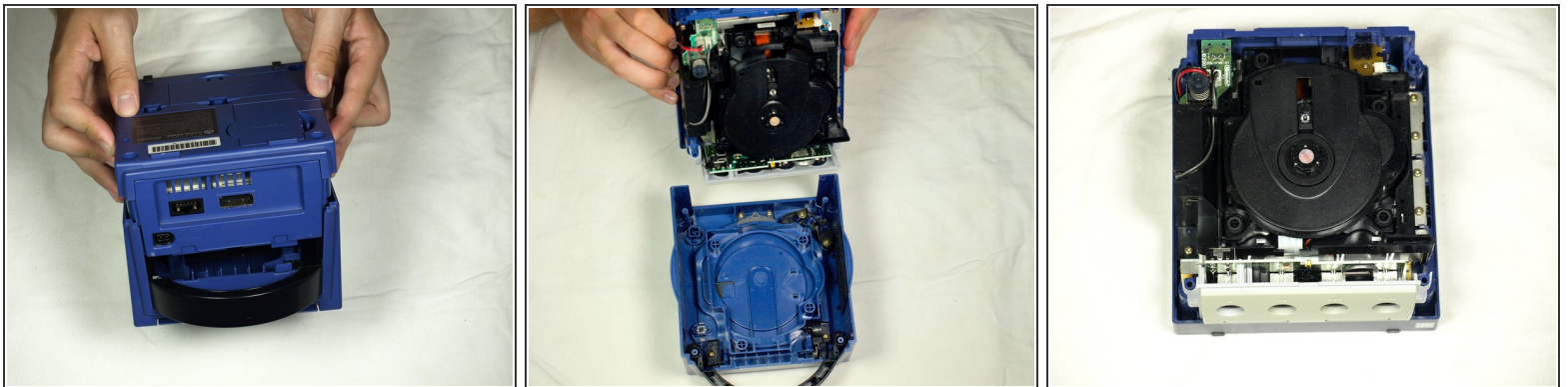
- [Gamebit 4.5mm](#) (1)
 - [Phillips #1 Screwdriver](#) (1)
 - [Phillips #2 Screwdriver](#) (1)
-

Step 1 — Top Case



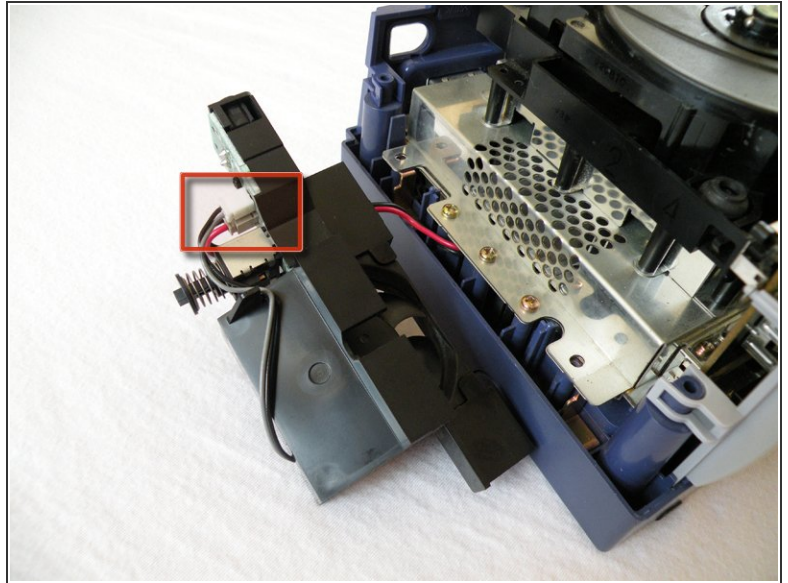
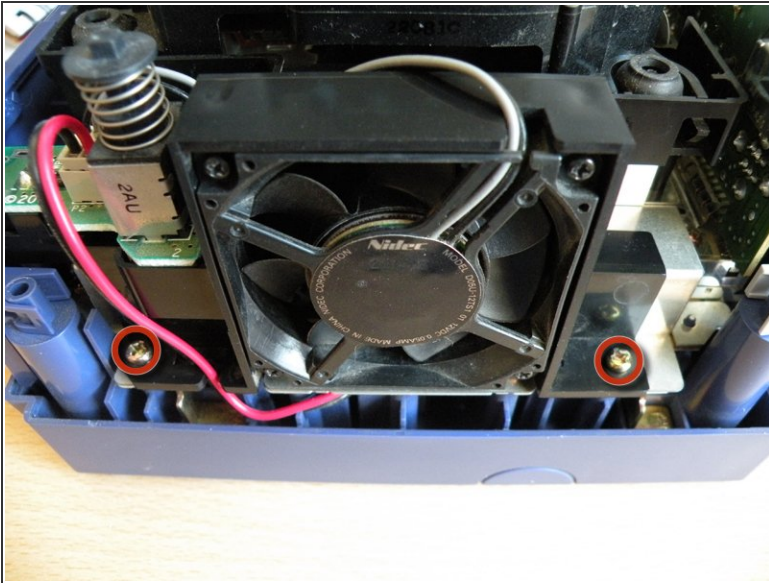
- Turn over the Gamecube so that the bottom side is facing up.
- Locate the four screws (circled in red) on each corner of the device. Then, use a 4.5 mm Gamebit screwdriver to remove all four screws.

Step 2



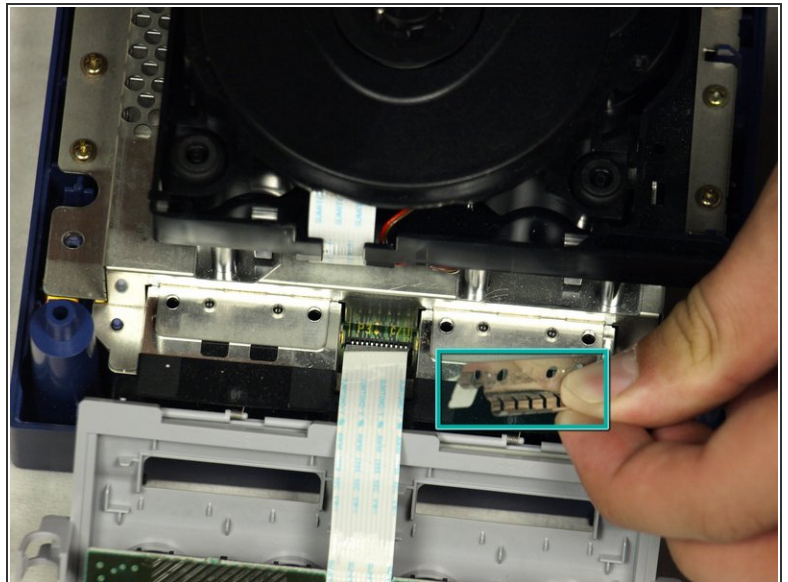
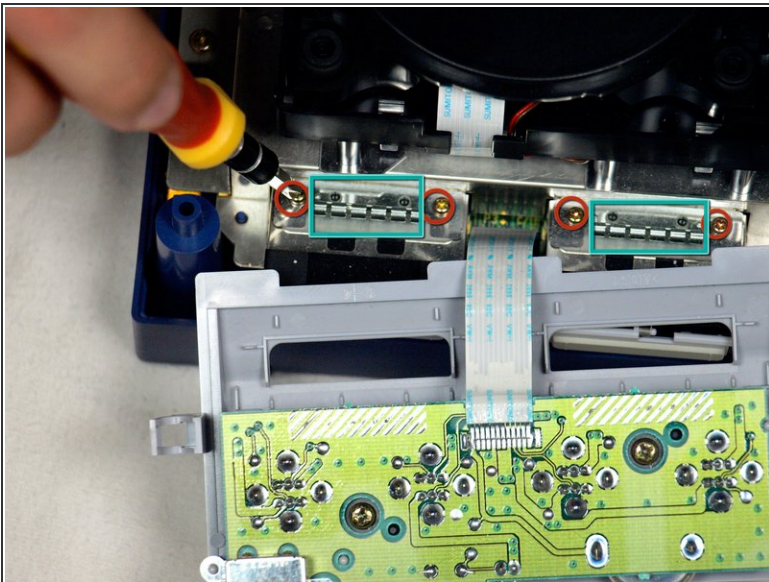
- With the bottom side of the GameCube facing upward and the screws removed, carefully pull the outer shell of the unit away from the top half. Then place the inside of the unit facing up.

Step 3 — Optical Drive Assembly



- The left side of the unit contains the cooling fan and its housing. Carefully remove the two (2) screws attaching the cooling fan housing to the unit.
- **Do not detach the red and black cooling fan wire from the main unit.** (red wire)

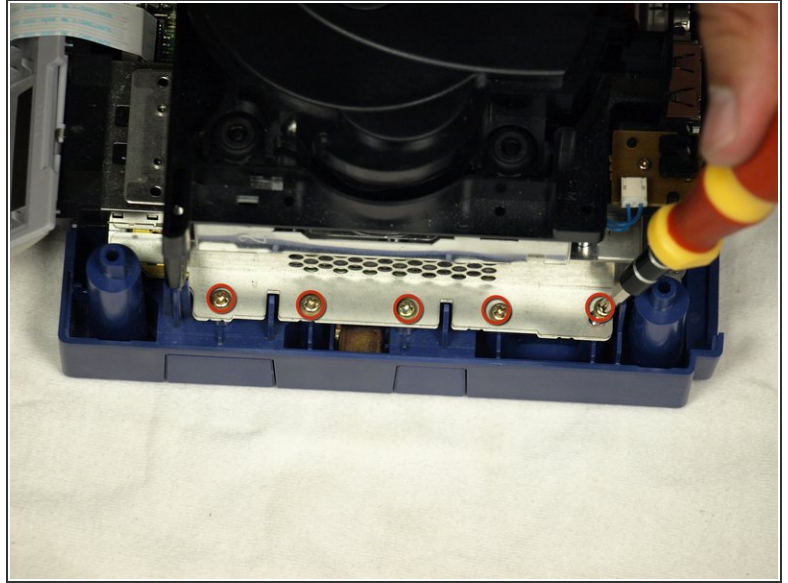
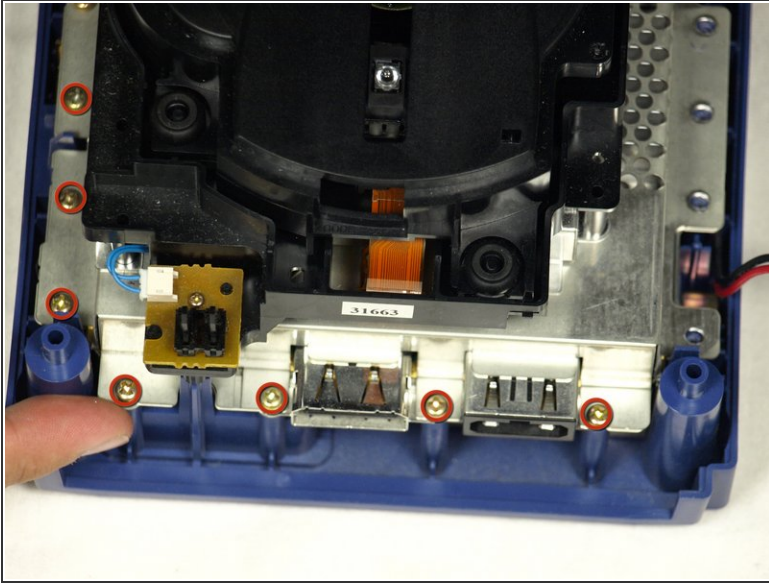
Step 4



- Remove the four (4) Phillips #1 screws retaining the ground springs (outlined in teal).
- Carefully remove the ground springs from the main unit as shown in the second photograph.

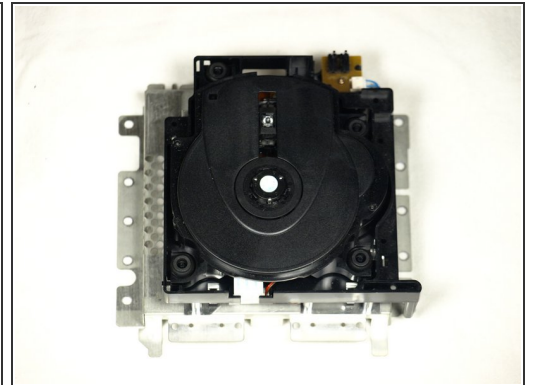
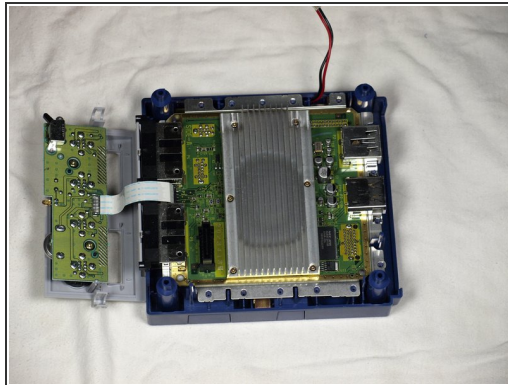
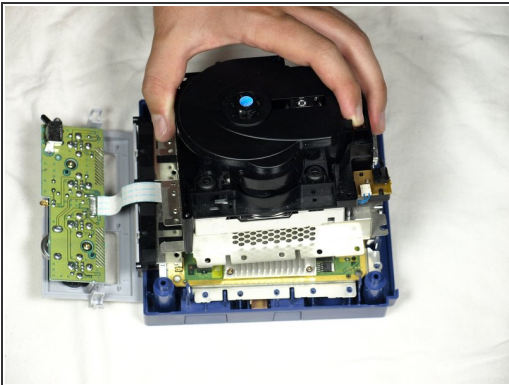
This document was generated on 2019-10-19 05:56:33 AM (MST).

Step 5



- i** The optical drive is secured to a metal plate.
- Using a Phillips #2 screwdriver, unscrew the twelve (12) screws that are around the outer edge of the optical drive (circled in red).

Step 6



- Carefully separate the optical drive assembly from the rest of the GameCube unit.
- i** The optical drive assembly is secured to the motherboard underneath by a slot; some force may be required to carefully free the assembly.
- i** The metal plate and the actual optical drive will remain attached (picture 3).

To reassemble your device, follow these instructions in reverse order.