



# Remove Scanner Assembly

In order to do any servicing on this printer, the scanner assembly needs to be removed first. While not difficult, there are a number of concealed steps.

Written By: Robert Backhaus





## TOOLS:

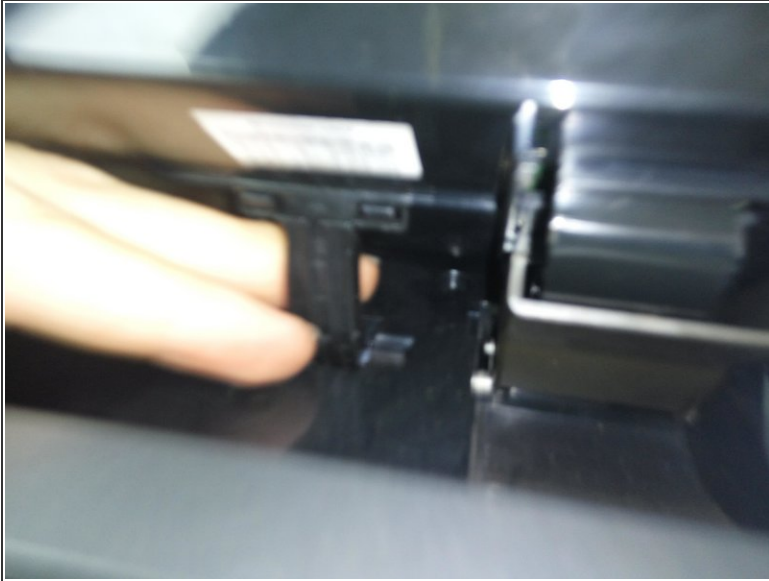
- [T10 Torx Screwdriver](#) (1)
  - [Spudger](#) (1)
-

## Step 1 — Prepare the Printer.



- Remove the printer from the optional second paper tray.
- Pull out the paper tray from the front, and the duplexer from the rear.
- Removing the print head (see the HP user guide) may also reduce the chance of ink leakage while working on the printer.

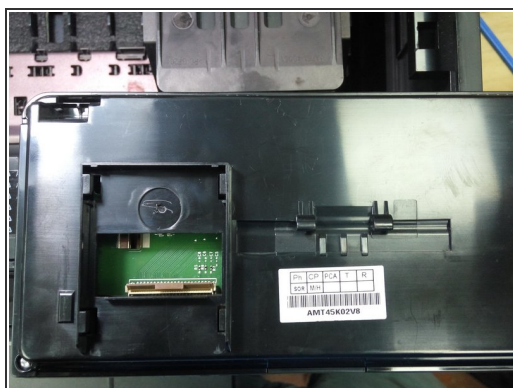
## Step 2 — Control Panel



- Hold up the control panel with one hand, reach underneath it with the other, and pull firmly downward on the curved support to detach it from the display
- Lifting the display further up, reach behind the brown plastic cover, and pull it forwards to release it

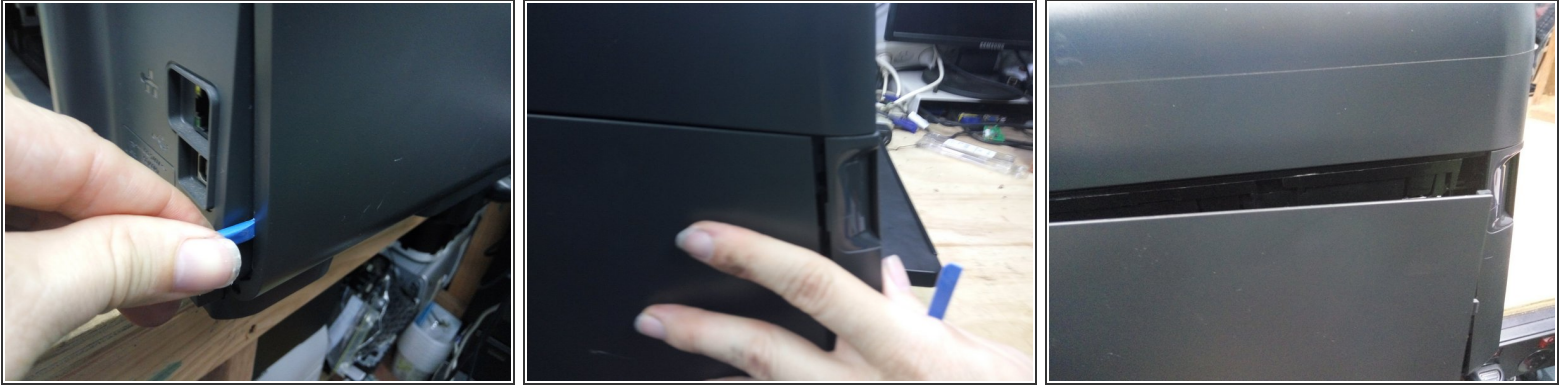


## Step 3 — Control Panel



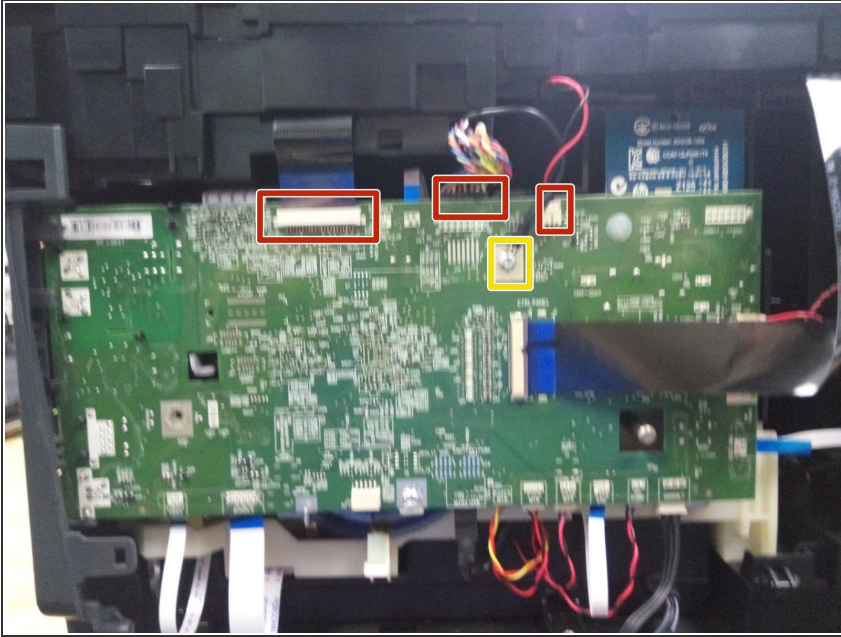
- Rest the machine on it's rear panel, so you can access the cable.
  - Lift up the brown clamp, and pull out the cable
  - Using a T-10 Torx screwdriver, undo the two screws beneath the display (pictured)
- i** The display remains attached to the scanner assembly for now. If you need to detach it from the scanner - for instance, to operate the printer while it is open - you can detach it once the scanner assembly is removed.

## Step 4 — Left Side (Controller Board) Panel



- On the back of the printer, remove the two screws on the right hand side (left-hand when viewed from the front).
  - Open the door on the front of the computer, and remove the one screw on the lower left-hand side.
  - Using a spudger lever firmly outwards on the lower rear side of the panel.
  - With your other hand, push the panel backwards, It will slide half a centimeter backwards and come free.
- i** Could you help me? It would be useful if you could take an image of the rear of the printer, add it to this guide, so the locations of various screws can be marked.

## Step 5 — Disconnect Cables



- Disconnect the scanner flatflex, sheet feeder and LED cables (marked in red).
  - Remove the earth strap (marked in yellow).
- ⓘ No other cables need to be removed at this time.

## Step 6 — Remove the scanner assembly



- Remove the remaining screws around the top of the printer.
- Lift the scanner assembly away from the printer.
- ⓘ If you need to detach the display, lay the scanner assembly upside down, lower the display assembly, push it to the right, and then adjust the angle of the display until it drops away from the scanner. Reconnect it to the flat-flex cable, and clip the support back into the rear to hold it. The printer will operate normally without the scanner.

To reassemble your device, follow these instructions in reverse order.