



Removing Bowers and Wilkins Zeppelin Air Dock Arm

It's easy to remove the dock arm from a Bowers and Wilkins Zeppelin Air. The Zeppelin will look much better and you can simply play music via AirPlay.

Written By: Some Guy



INTRODUCTION

Make sure your Zeppelin is configured and works via AirPlay. After removing the dock arm, your Zeppelin will no longer have the status indicator light.

Removing the dock arm might void your warranty.



TOOLS:

- [Phillips #0 Screwdriver](#) (1)



PARTS:

- [Black Tape](#) (1)

Step 1 — Dock Arm



- Place the Zeppelin upside down. You can use the included packaging parts for this.

Step 2



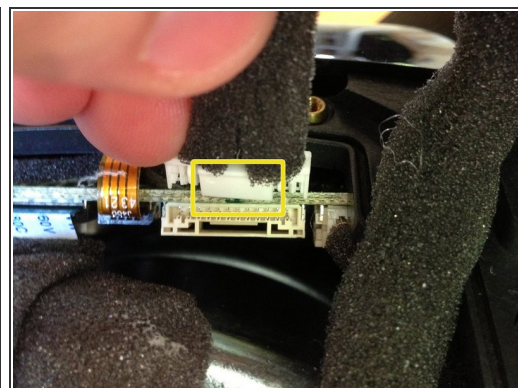
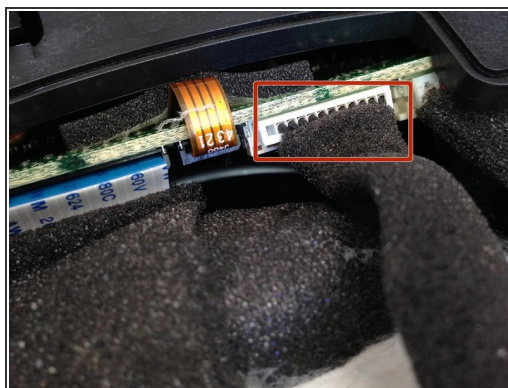
- Remove the rubber on the bottom. Slowly pull it up from one side. It's attached with glue.

Step 3



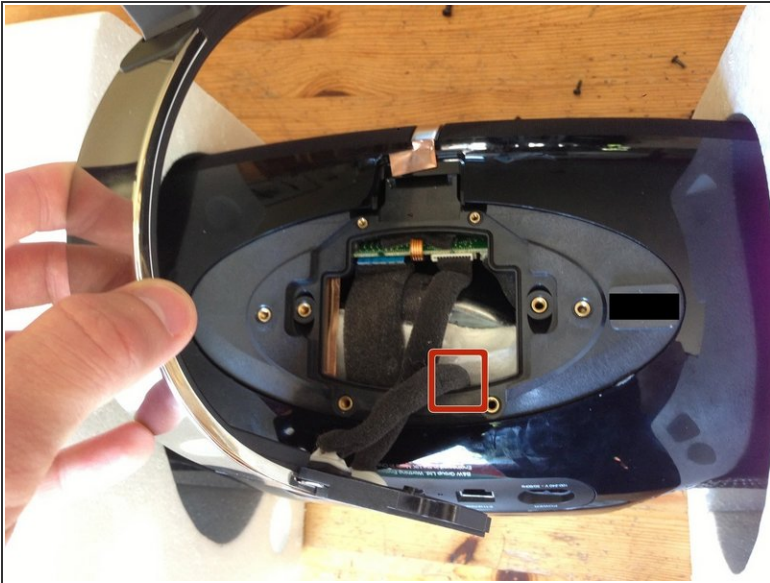
- Remove the six screws that attach the dock arm to the Zeppelin.
- Lift up the dock arm.

Step 4



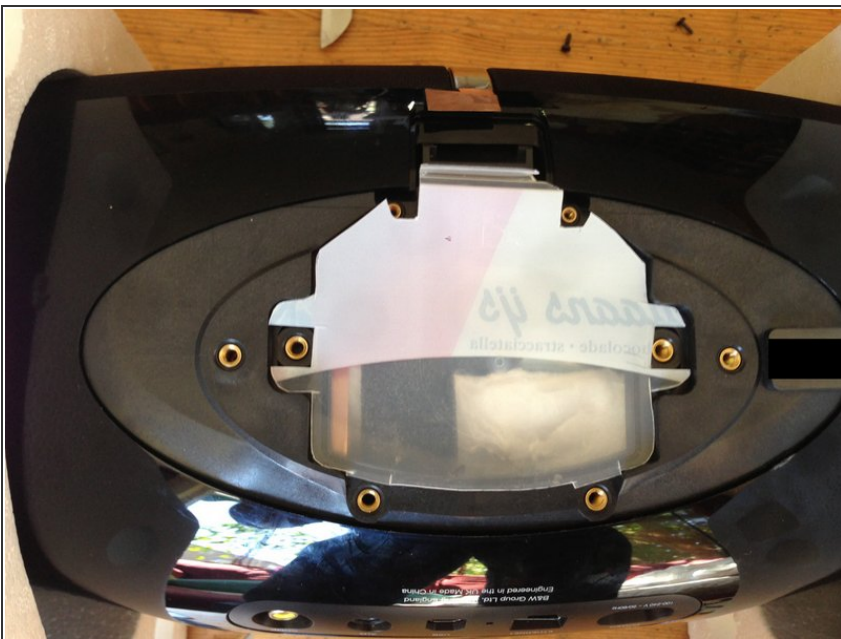
- Unplug the frontmost connector.
- You might have to use a knife or the flat end of a spudger to push the tab.

Step 5



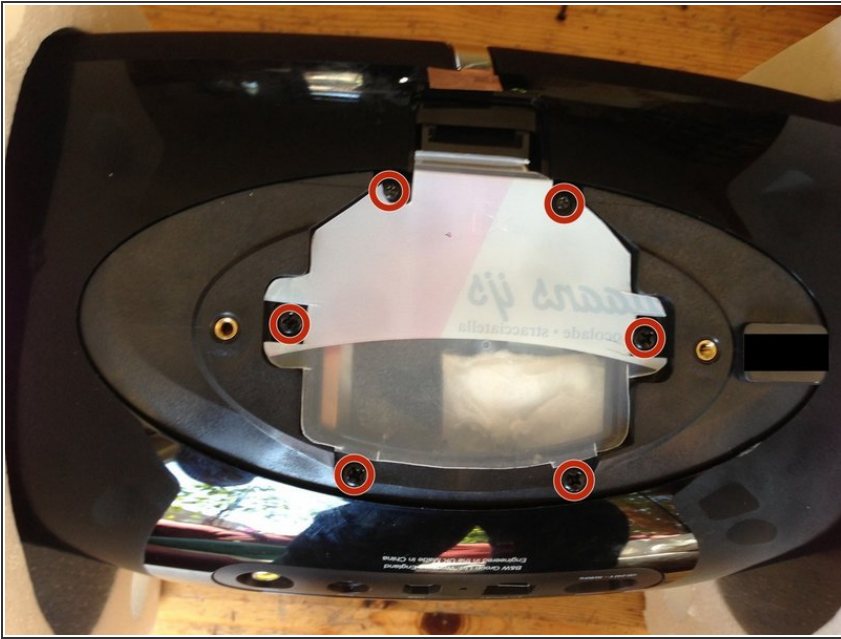
- Unplug the other connector. I just pulled until it unplugged.
- Remove the dock arm.

Step 6



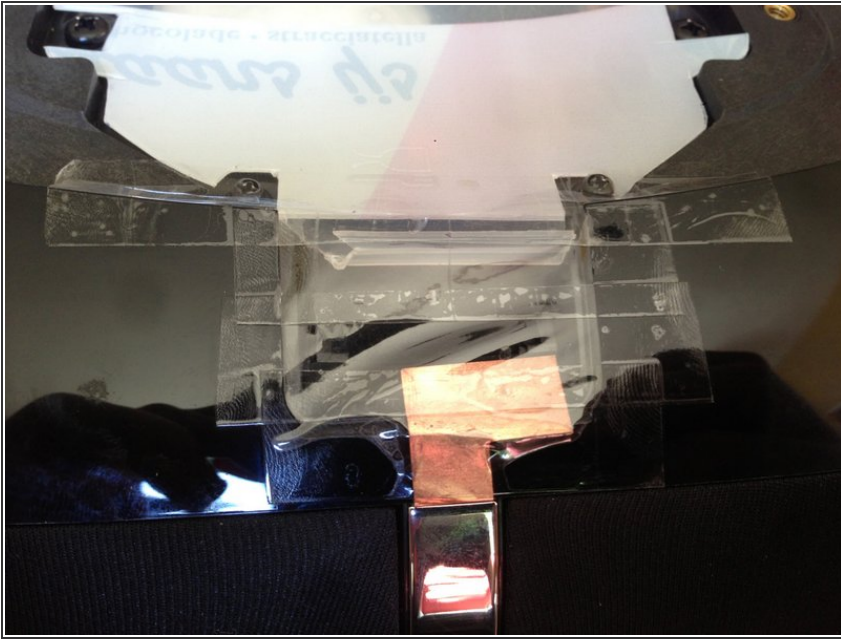
- Find something to cover up the hole. This prevents the glue from sticking to internal parts. I used the cover of a plastic ice box.

Step 7



- Replace the screws. (Or store them somewhere safe.)

Step 8



- Use tape to close the hole that was once covered by the dock arm. This prevents dust from getting into your Zeppelin. (Black tape might work better, although you almost won't see the tape at all.)

Step 9



- Attach the rubber bottom again. Use the screw holes (for the wall mount) for perfect alignment.
- Make sure the glue attaches to the tape. Otherwise dust might get through the gap.

Step 10



- Enjoy your now even better Zeppelin, and store the dock arm somewhere safe!