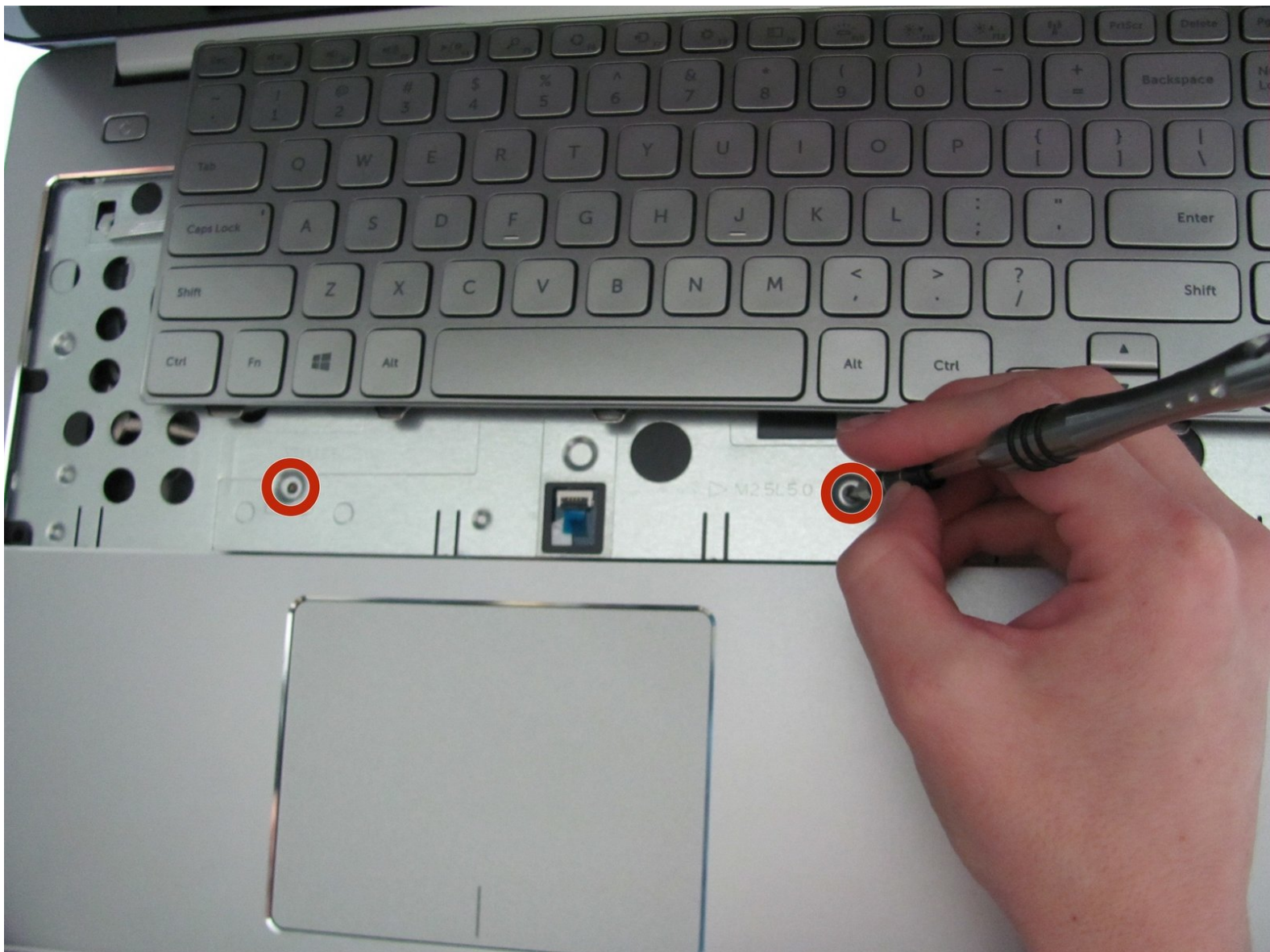




# Removing Dell Inspiron 15-7537 Bottom Cover

Prerequisite only

Written By: Jean Whitmore



---

## INTRODUCTION

This guide shows you how to remove the bottom cover beneath the battery, which is needed to strip down to the mid-layer of the device, which is needed for the USB board replacement guide.

---



### TOOLS:

- [Phillips #0 Screwdriver](#) (1)
  - [Spudger](#) (1)
-

## Step 1 — Bottom Case



- Make sure the display is closed. Then, flip the computer over so that you can see the bottom cover.
- Loosen the two 5 mm Phillips #0 on the upper edge of the cover.
- ⓘ These screws will stay captive to the case.

## Step 2



- Remove the two 5 mm interior screws that connect the cover to the assembly using the same Philips head screwdriver from the previous step.

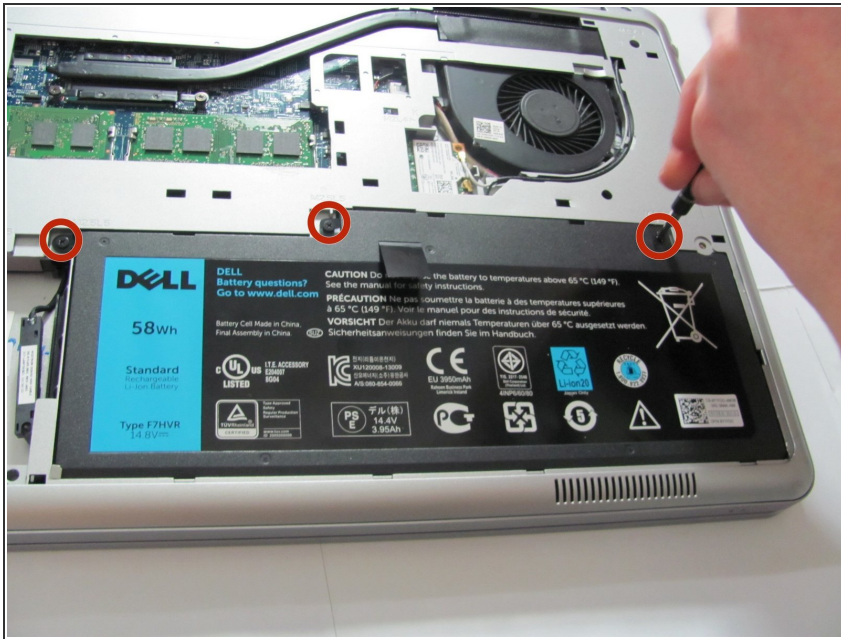
## Step 3



- Use a spudger to remove the base cover from the rest of bottom cover.



## Step 4 — Battery



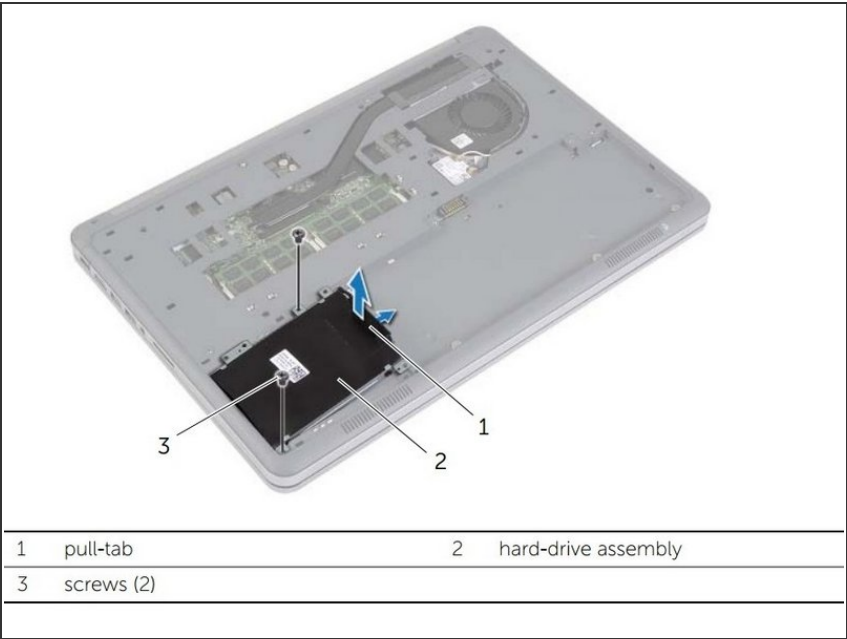
- Remove the three 5mm Phillips #0 screws that keep the battery connected to the computer.

Step 5



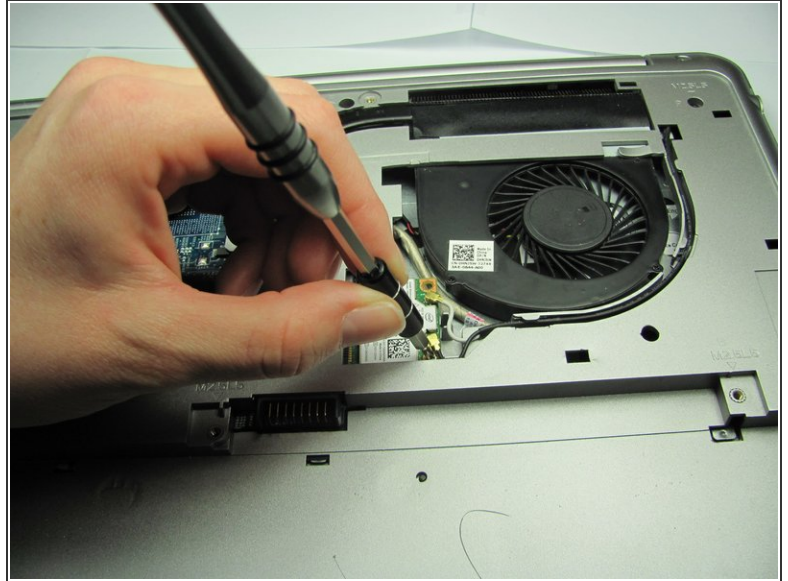
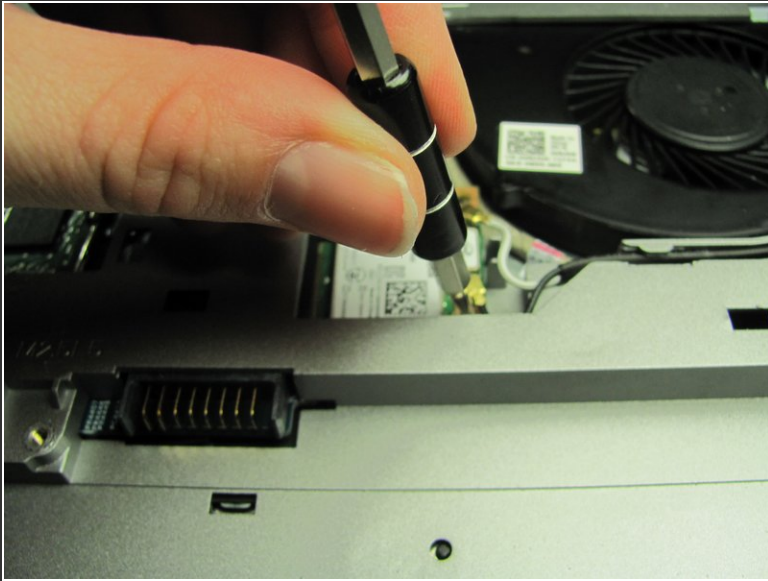
- ⚠ Ground the system board by turning over the computer, opening the display, and holding the power button down for about 5 seconds before proceeding.
- Using the pull tab on the battery, lift the battery out of the computer.

Step 6 — Hard Drive



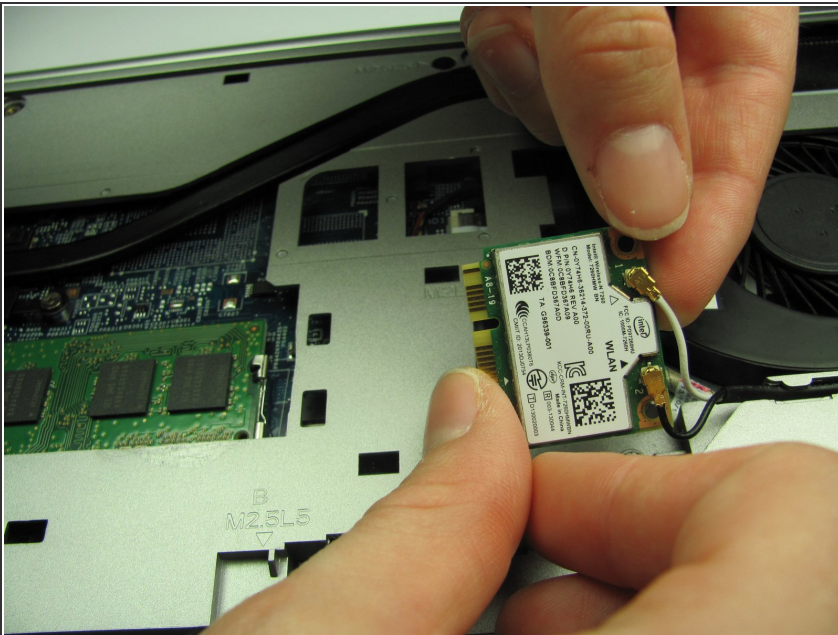
- The model device did not come with a hard drive. However, you will need to remove the hard drive to proceed. Please remove the hard drive following the steps on [page 16 of the official Dell Inspiron 15-7537 manual](#).

## Step 7 — Remove the WiFi Card



- Completely unscrew the 2 mm screw that connects the WiFi card to the motherboard using a Philips head screwdriver.

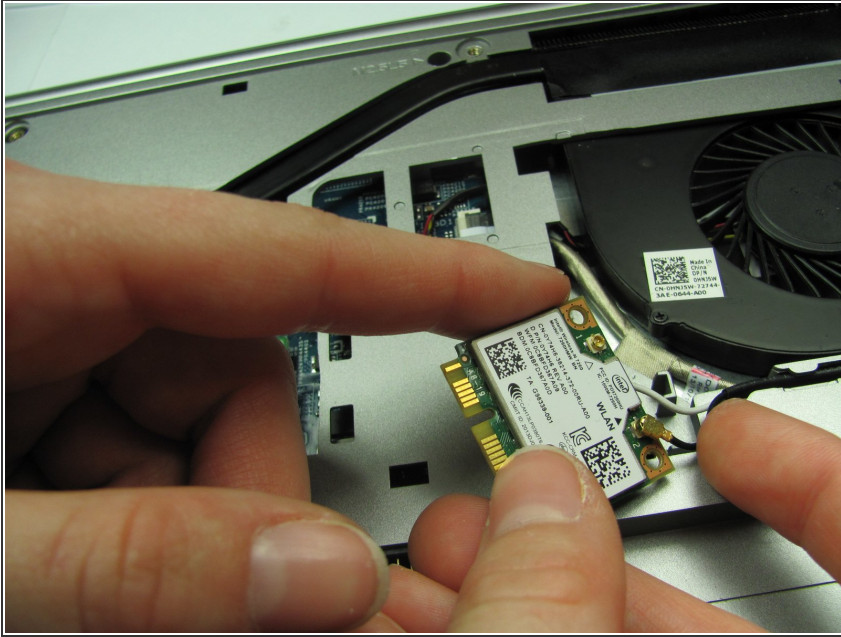
## Step 8



- Disconnect the two antennas (one black and one white) from the wireless card.



## Step 9



- Remove the WiFi card.
- ❗ To place a new WiFi card, connect the antenna cables to the WiFi card. The white cable goes to the white triangle, and the black cable goes to the black triangle.
- ⚠️ Avoid damaging the card by not placing any cables underneath the card.

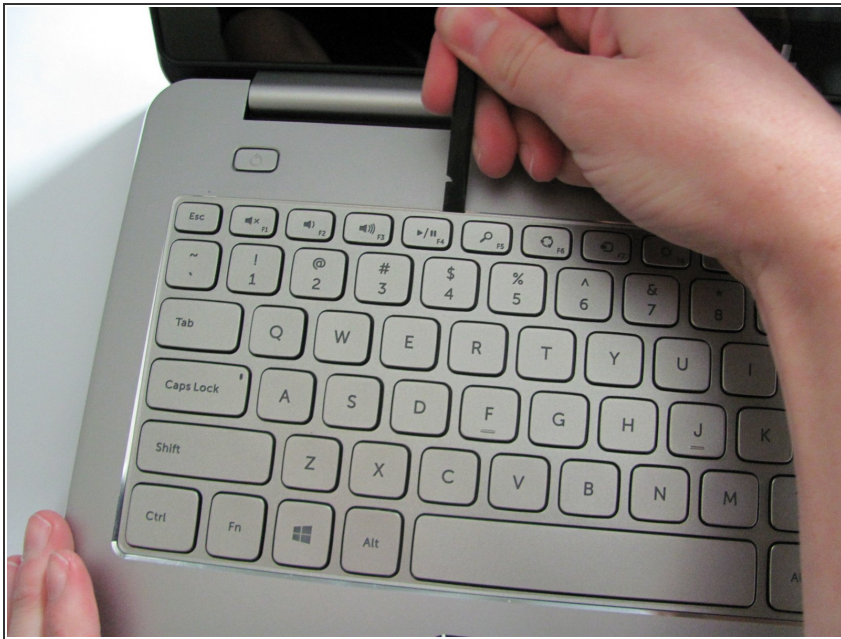
## Step 10 — Removing the Keyboard



- Remove the single 5mm screw that connects the keyboard to the palm assembly with the Phillips head screwdriver.

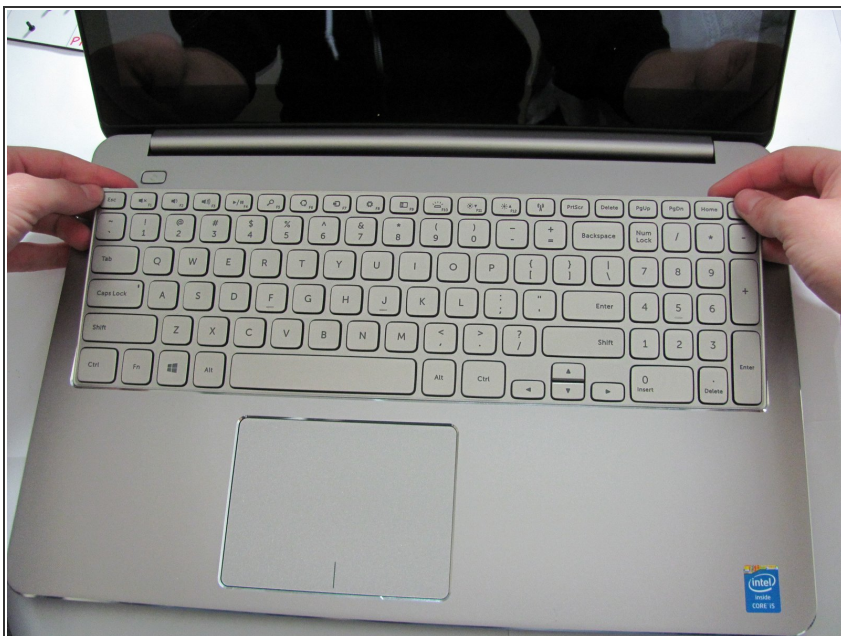


## Step 11



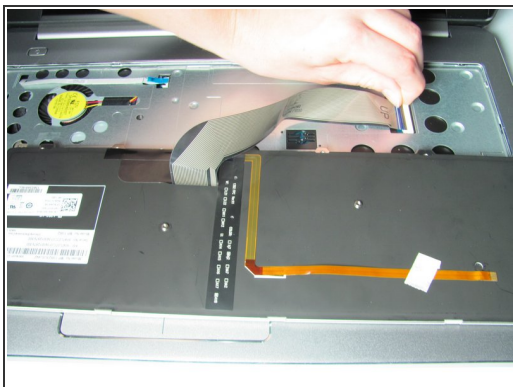
- Flip over the computer and open the display as far as it can go.
- Use the spudger to remove the keyboard from the palm assembly.

## Step 12



- Gently flip over the keyboard and place it on the palm rest assembly.
- Lift the connector latches and disconnect the keyboard and the keyboard back-light cables.

## Step 13



- Take the keyboard off the palm rest assembly.

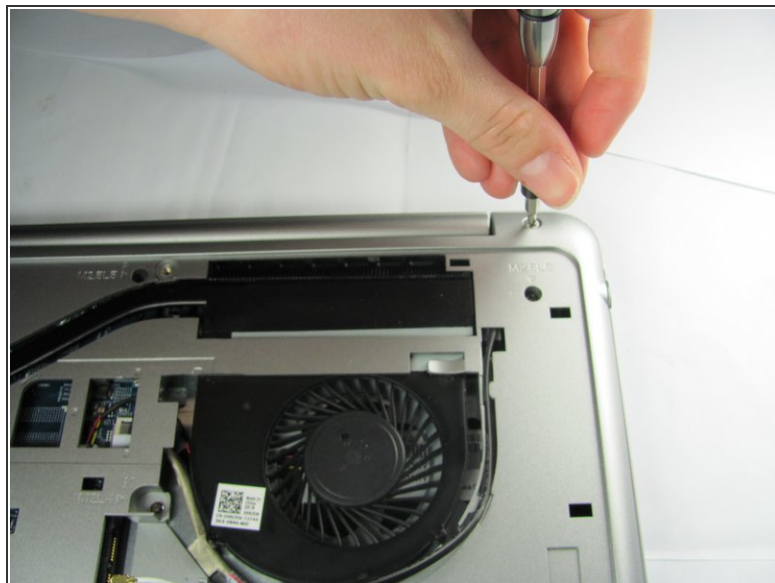
## Step 14 — Bottom Cover



- Unscrew the two black 5 mm screws underneath the keyboard using a Phillips head screwdriver.

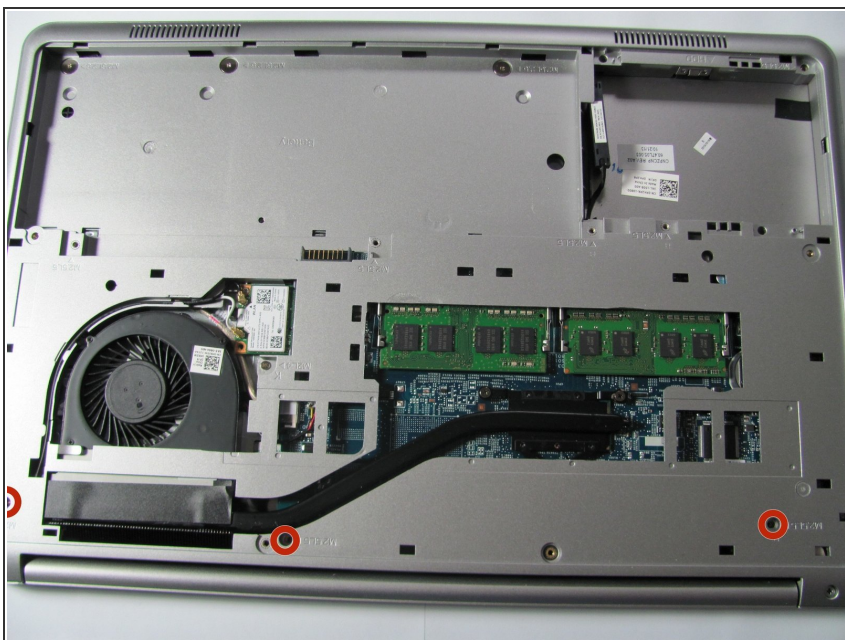


## Step 15



- Flip the computer and remove the two silver 5 mm screws on the corners of the base cover with the Phillips head screwdriver.

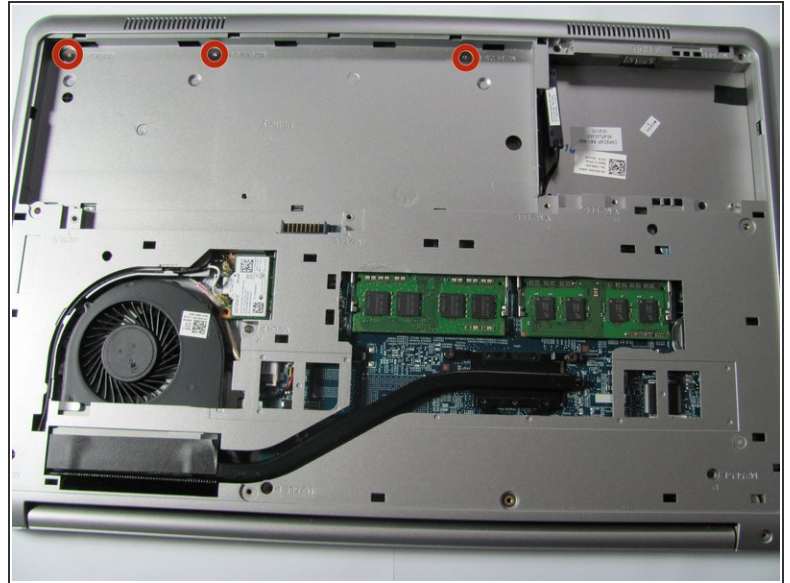
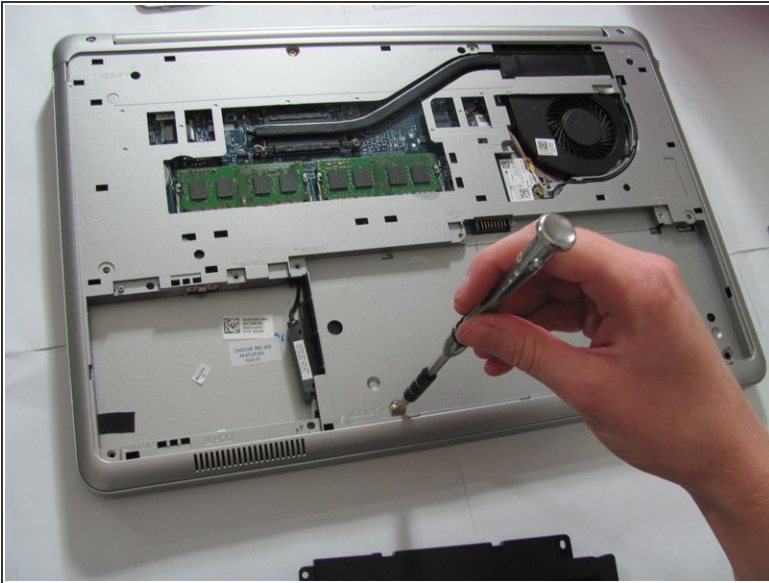
## Step 16



- Unscrew the three black 5 mm screws with the Phillips head screwdriver.

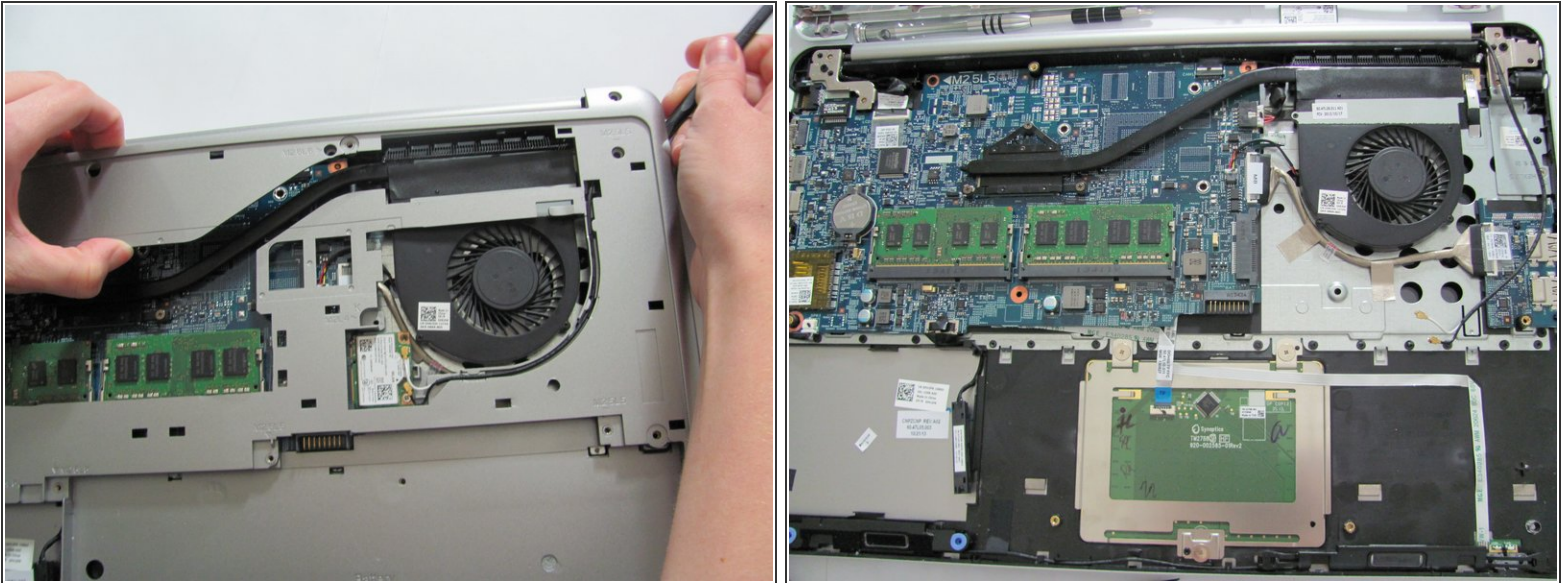


## Step 17



- Remove the three silver 2 mm screws (with large flat circular heads) from where the battery was taken out with the Phillips head screwdriver.

## Step 18



- Place a plastic spudger underneath the base cover and move it along the outside of the cover. Once the cover is disconnected lift the off the base cover.
- ⓘ To fully take off the base cover the wires that connect to the WiFi card need to be pulled off and pulled through its hole in the base cover

To reassemble your device, follow these instructions in reverse order.