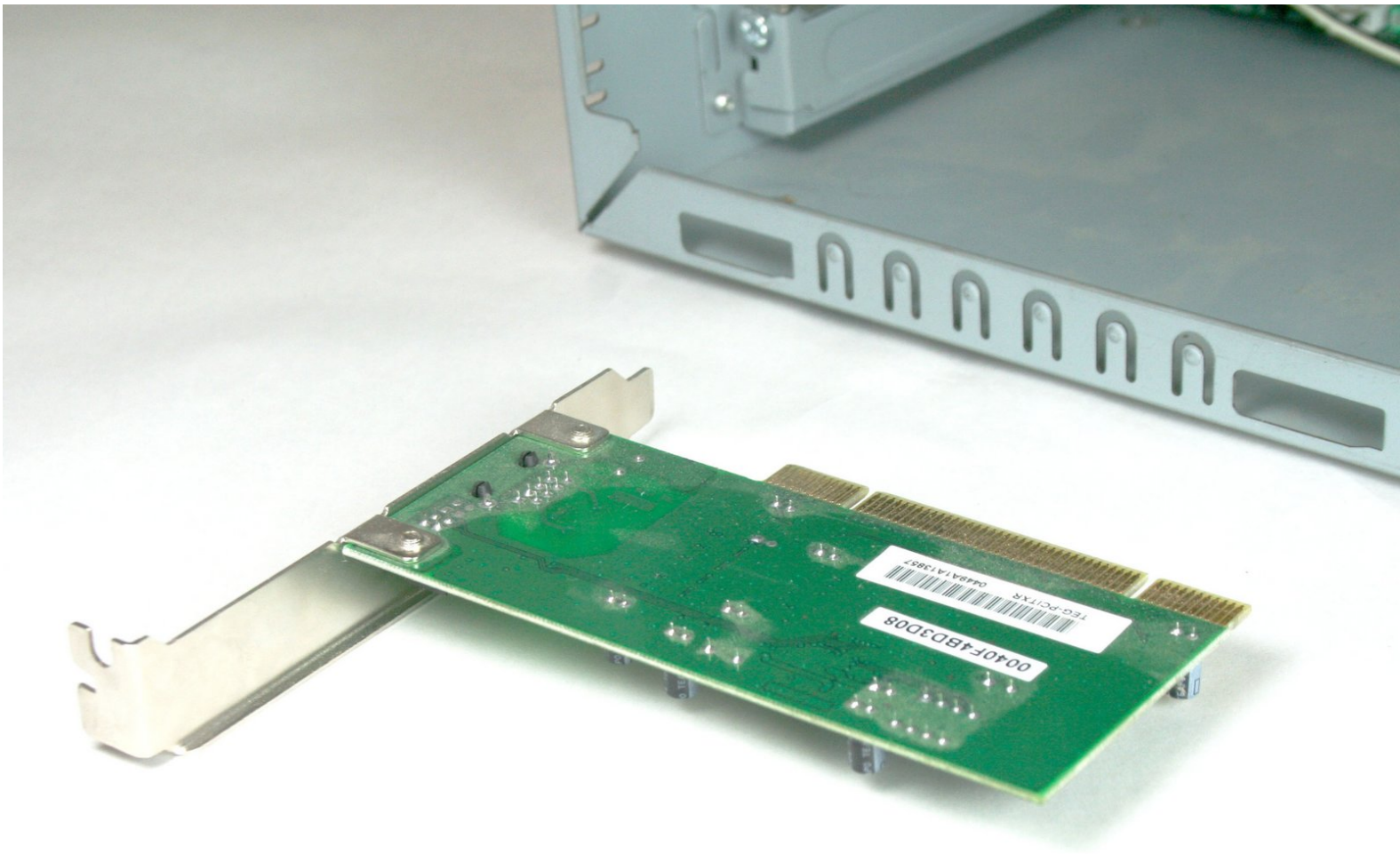




Removing HP Compaq dx2000MT PCI Cards

Remove a PCI card

Written By: Logan Pace



INTRODUCTION

This guide will show you how to remove a PCI card on your HP Compaq dx2000MT.



TOOLS:

- [Anti-Static Wrist Strap](#) (1)
 - [Flathead Screwdriver](#) (1)
 - [Phillips #2 Screwdriver](#) (1)
 - [T15 Torx Screwdriver](#) (1)
-

Step 1 — Case Doors



- Turn off your computer and remove the power cable by pulling it straight out of its socket.

Step 2



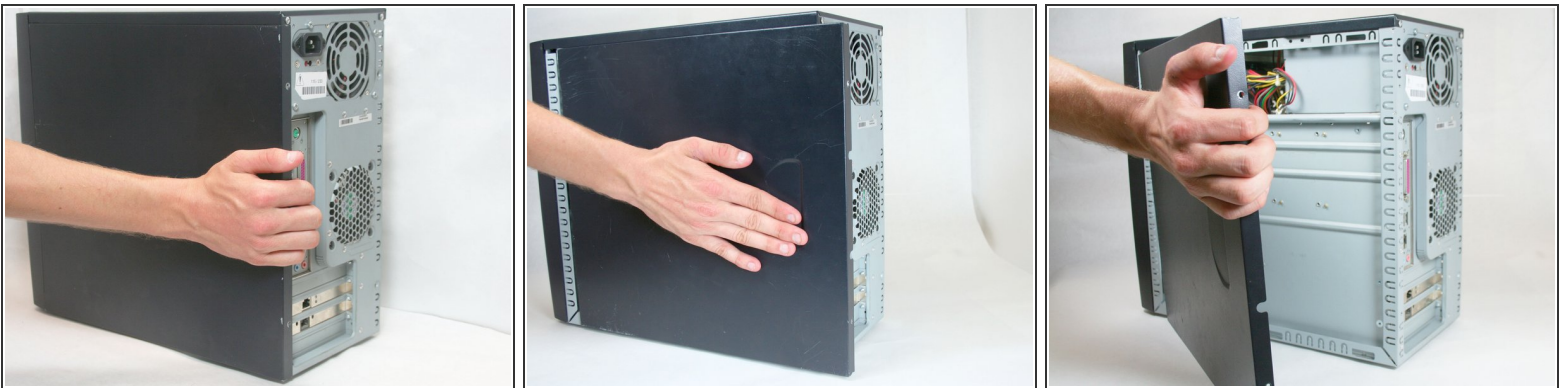
- Remove the two Phillips #2 screws that secure the case door to the device.

Step 3



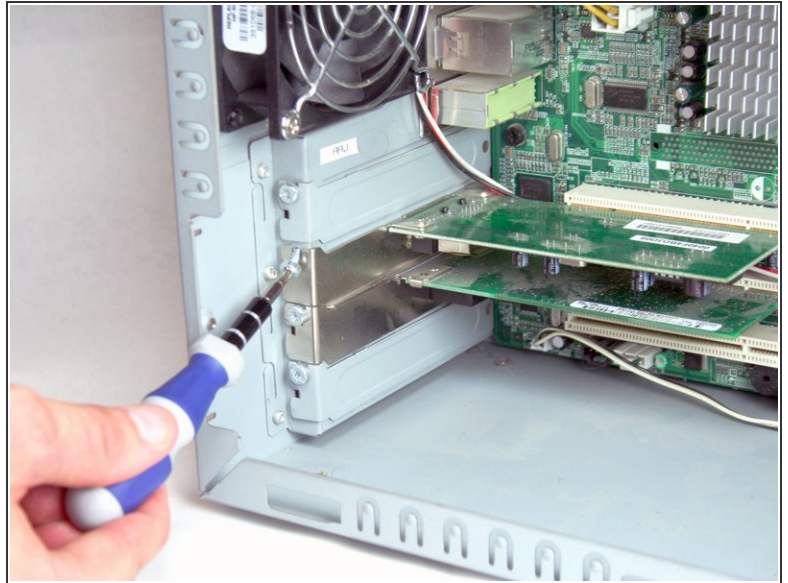
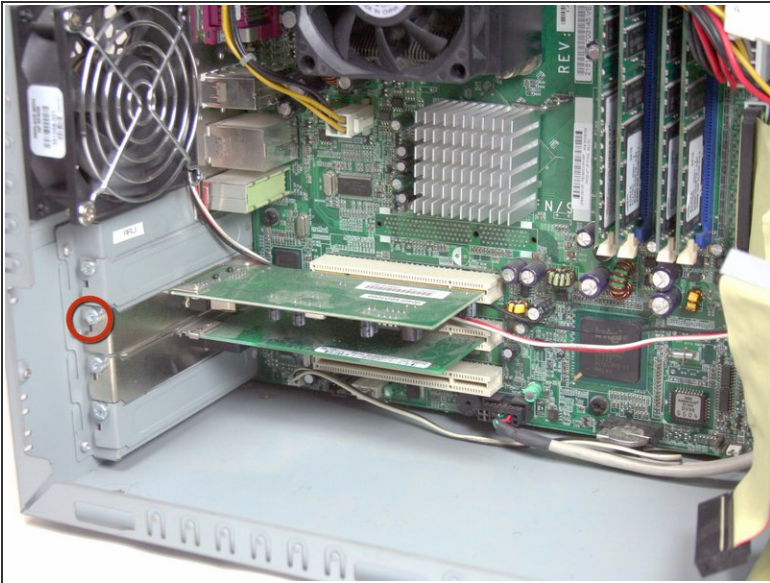
- Remove the side case door by pushing towards the rear of the device with your hand.
 - ❗ This may take considerable force so keep pushing!
- Once you slide the door back, remove it by pulling it outwards from the device.

Step 4



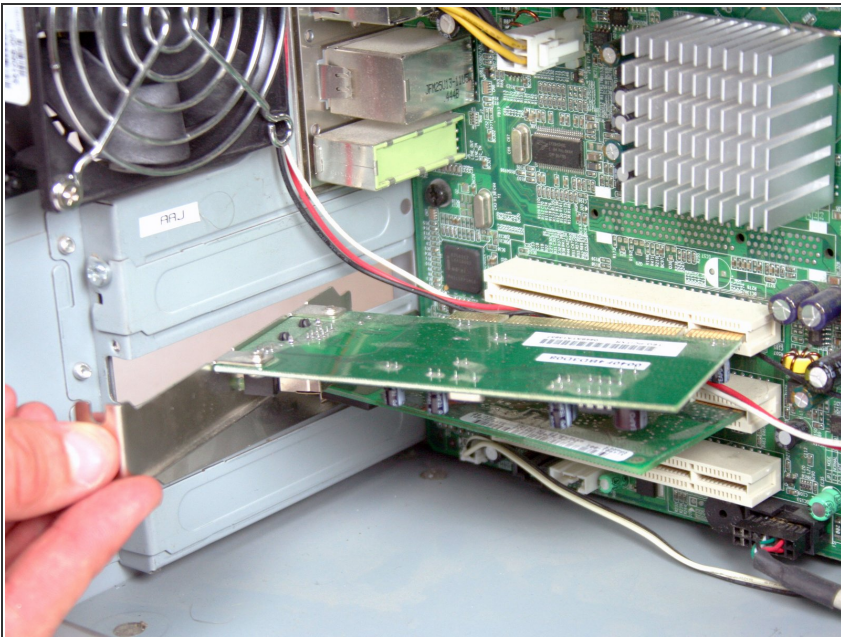
- Remove the side case door by pushing towards the rear of the device with your hand.
 - ❗ Once again, this may take considerable force.
- Once you slide the door back, remove it by pulling it outwards from the device.

Step 5 — PCI Cards



- Remove the Torx T15 screwdriver holding the PCI card in place.

Step 6



- Remove the PCI card by pulling it out towards the side of the device.
- ⚠ Be careful about touching the top and bottom of the card! The static electricity in your fingers could short it. If you can, only touch the metal bracket and the sides of the card.

To reassemble your device, follow these instructions in reverse order.