



Removing HP Compaq dx2000MT Power Supply

Remove the power supply.

Written By: Logan Pace



INTRODUCTION

This guide will show you how to remove the power supply on your HP Compaq dx2000MT.



TOOLS:

- [Anti-Static Wrist Strap](#) (1)
 - [Flathead Screwdriver](#) (1)
 - [Phillips #2 Screwdriver](#) (1)
 - [T15 Torx Screwdriver](#) (1)
-

Step 1 — Case Doors



- Turn off your computer and remove the power cable by pulling it straight out of its socket.

Step 2



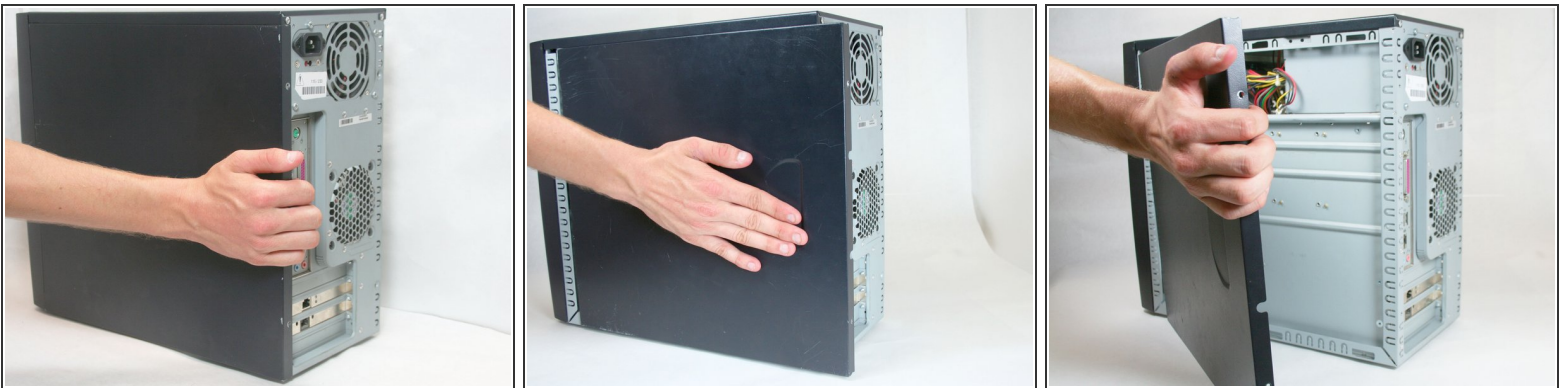
- Remove the two Phillips #2 screws that secure the case door to the device.

Step 3



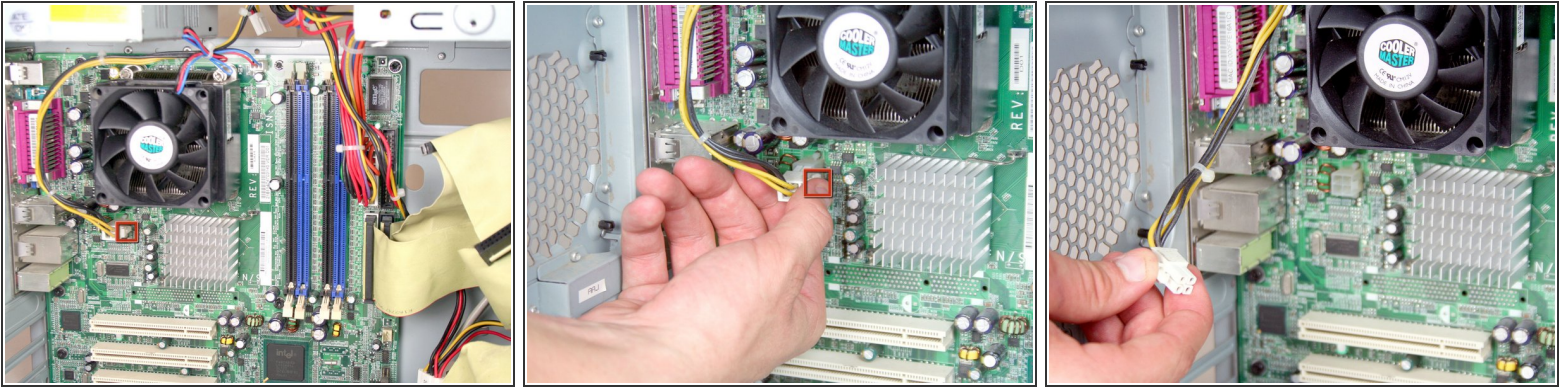
- Remove the side case door by pushing towards the rear of the device with your hand.
 - ❗ This may take considerable force so keep pushing!
- Once you slide the door back, remove it by pulling it outwards from the device.

Step 4



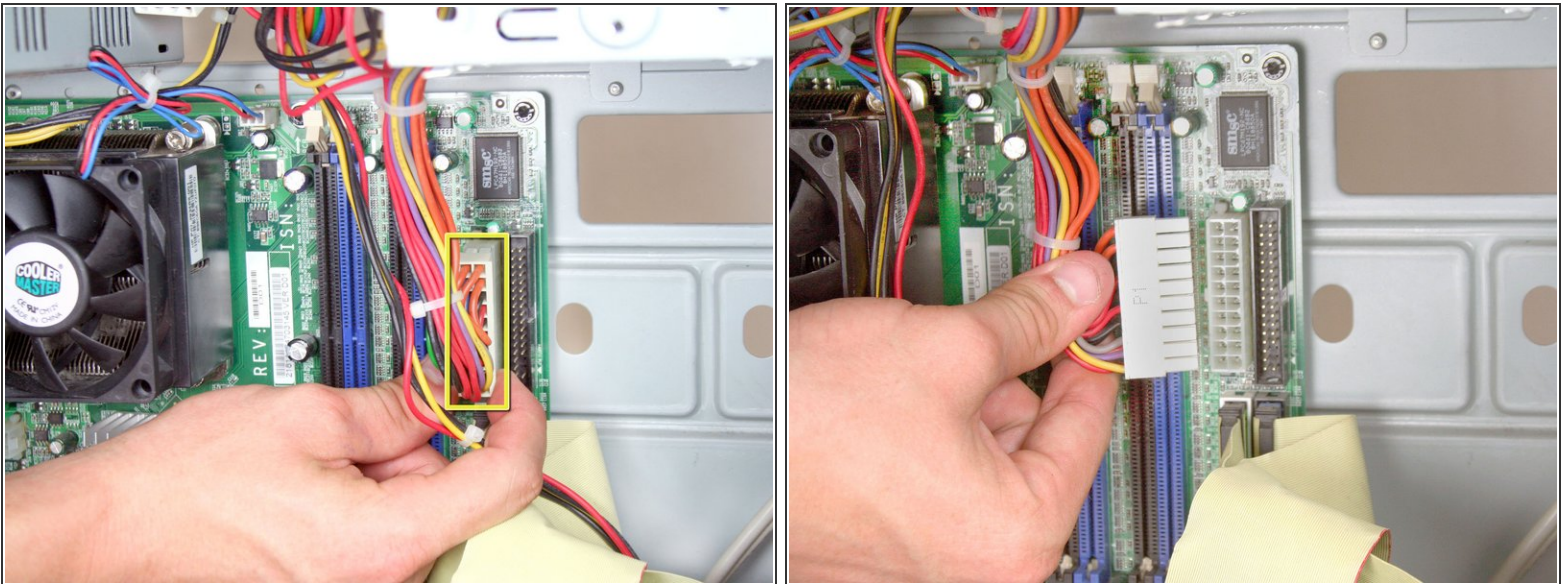
- Remove the side case door by pushing towards the rear of the device with your hand.
 - ❗ Once again, this may take considerable force.
- Once you slide the door back, remove it by pulling it outwards from the device.

Step 5 — Power Supply



- Remove the 4 pin ATX power connector from the motherboard by pressing down the holding latch and pulling out towards the side of the device.

Step 6



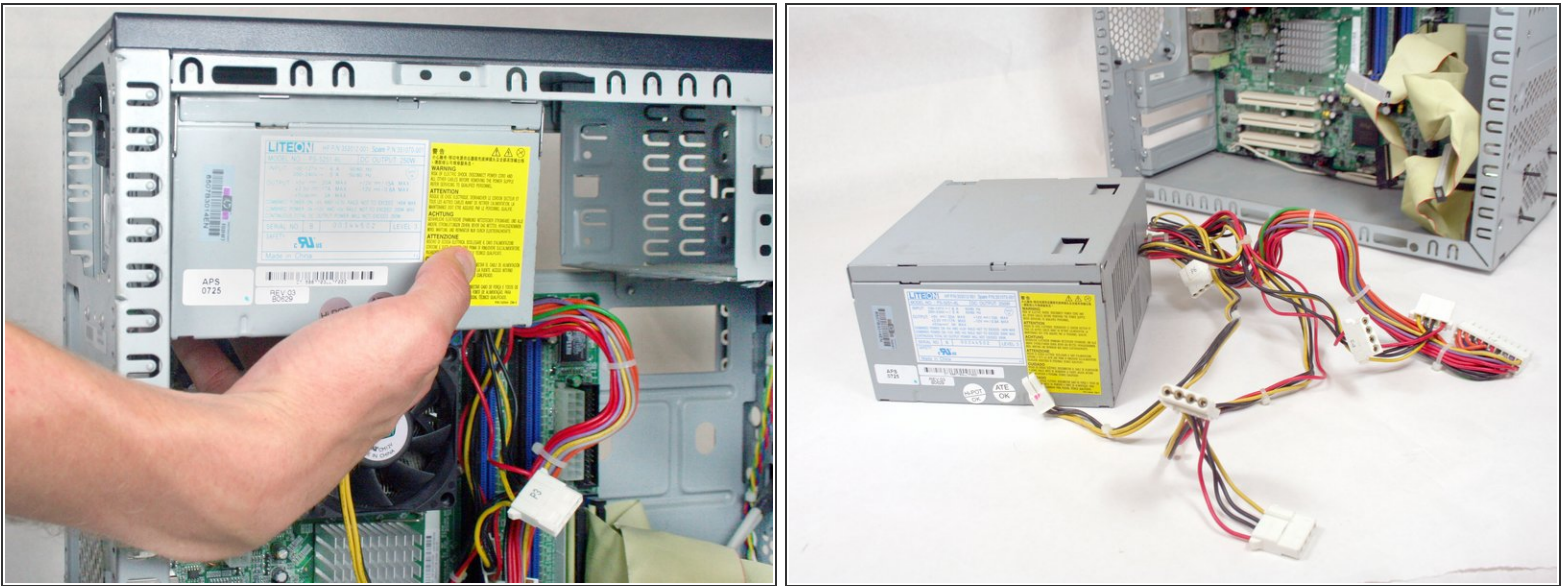
- Remove the 20 pin ATX power connector from the motherboard by pressing down the holding latch and pulling out towards the side of the device.

Step 7



- Remove the 4 Torx T15 screws from the rear of the power supply

Step 8



- Slide the power supply towards the front of the device
- ⚠ Keep your hand underneath it! You don't want to drop it!
- Then pull the power supply down and remove it from the case.

To reassemble your device, follow these instructions in reverse order.