



# Removing Jura Impressa S95 brewgroup

Removing the brewgroup in a Jura Impressa S95

Written By: VauWeh



---

## INTRODUCTION

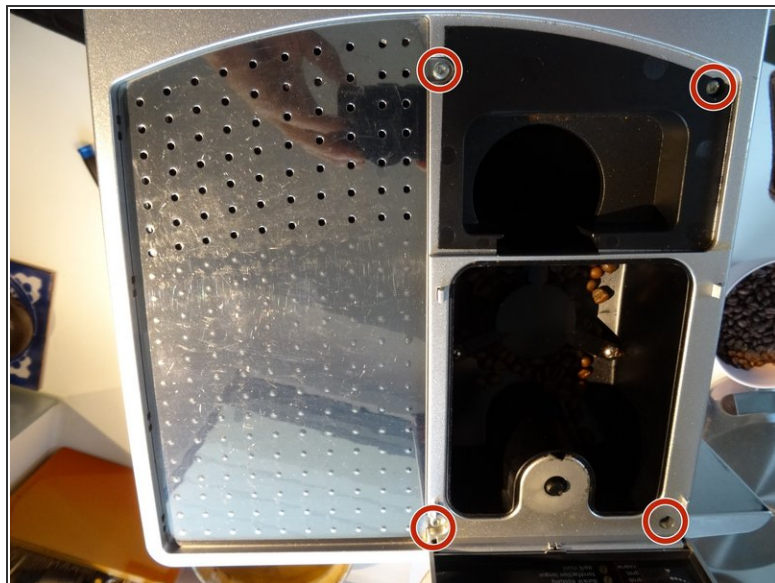
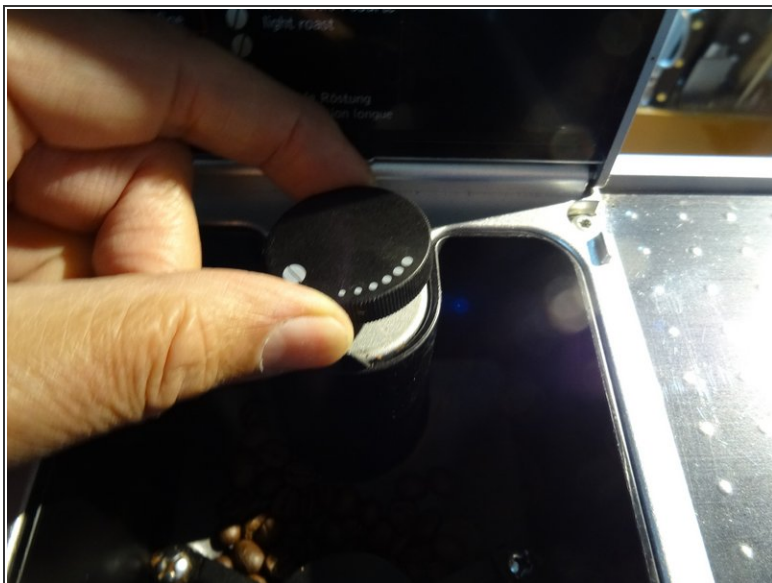
The brewgroup produces the coffee. The inner seals are heavy used and must be replaced from time to time.




### TOOLS:

- [T15 Torx Screwdriver](#) (1)
-

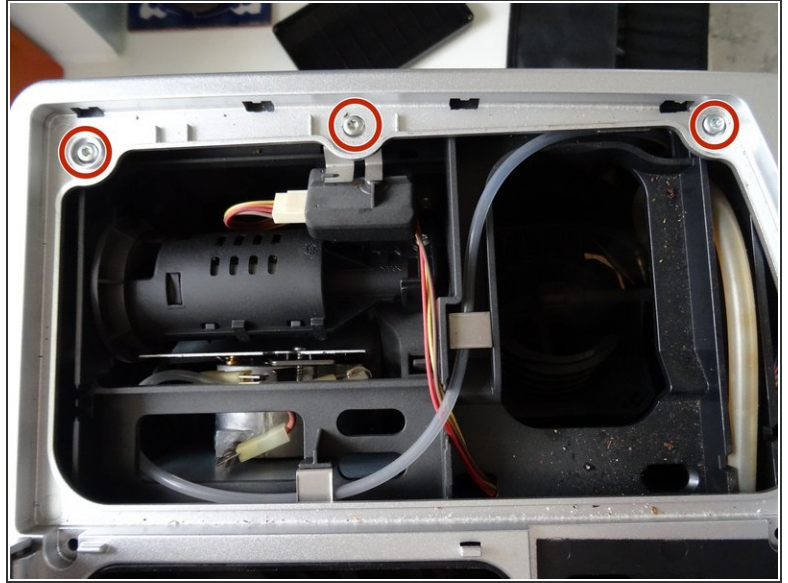
## Step 1 — How to open a Jura Impressa S95's cover



 Always remove the power cord from the wall outlet.

- Lift out the coffee tray
- Remove the lid sealing the coffee bean container
- Remove all of the coffee beans you can possibly remove.
- Pull the adjuster of the coffee bean grinder straight up
- Remove the four T15 Torx screws

## Step 2



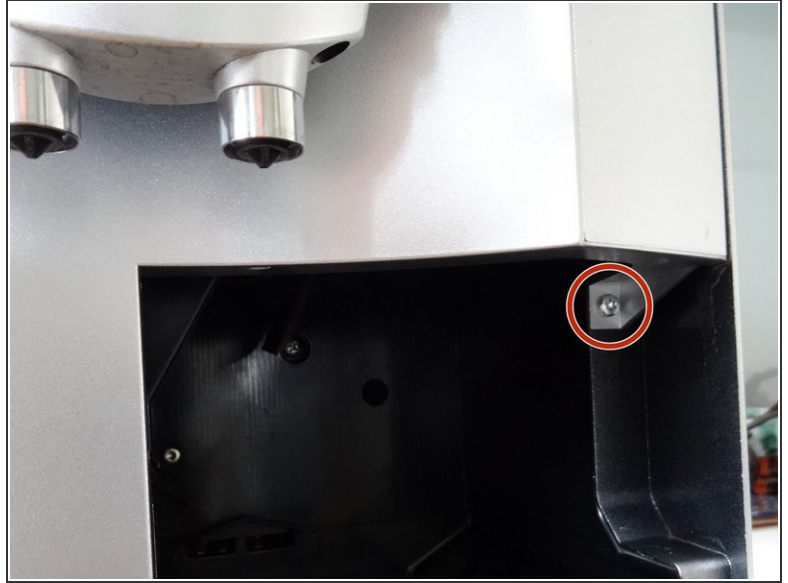
- Remove the cup heat plate.
  - ⓘ It can be opened like a book.
- Below the cup heat plate there are three more T15 Torx screws. Remove them.

## Step 3



- The top cover is now free. Lift ´er up and set ´er aside.

## Step 4 — Jura Impressa S95 front cover



- Remove the knob for the steam valve by simply pulling it off.
- The front cover is secured with a Torx T15 screw. Remove it.

## Step 5



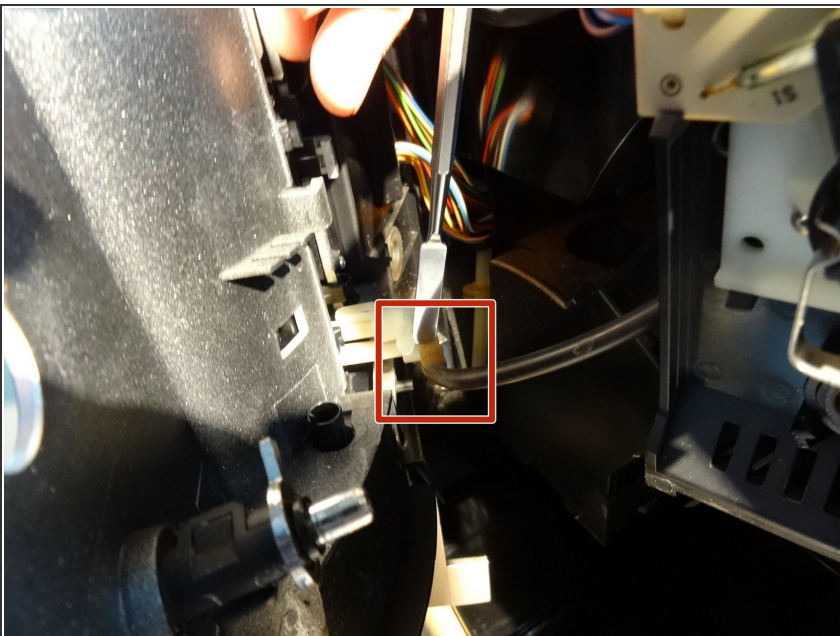
- Now the front cover can be opened like a door for a few inches. The hinge is on the left.

## Step 6



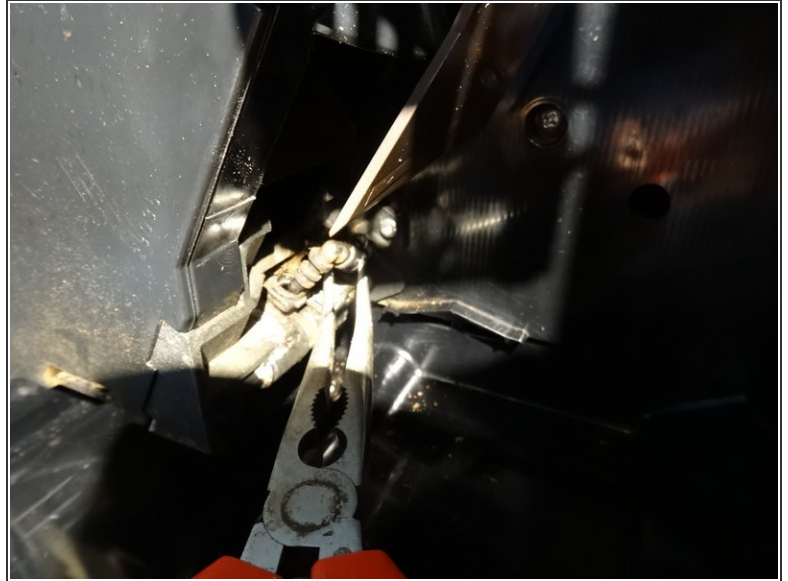
- ❗ Various hoses hinder the further opening of the front cover. You need to remove the steam valve keypad from the cover.
- Use a spudger to lift the two notches at the top of the front cover a bit to release the keypad at the top.
- Lift the keypad upwards and pull it to the back. The steam pipe will slide out from its connection.
- ❗ All hoses can remain connected.

## Step 7



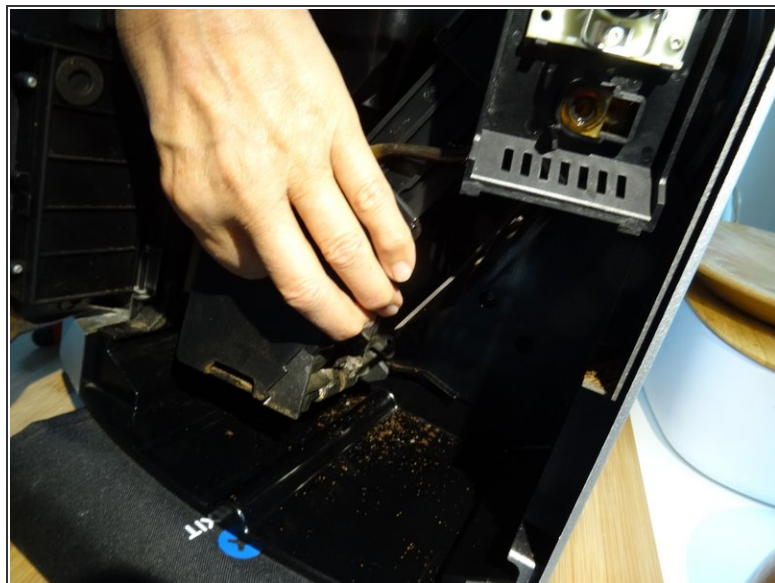
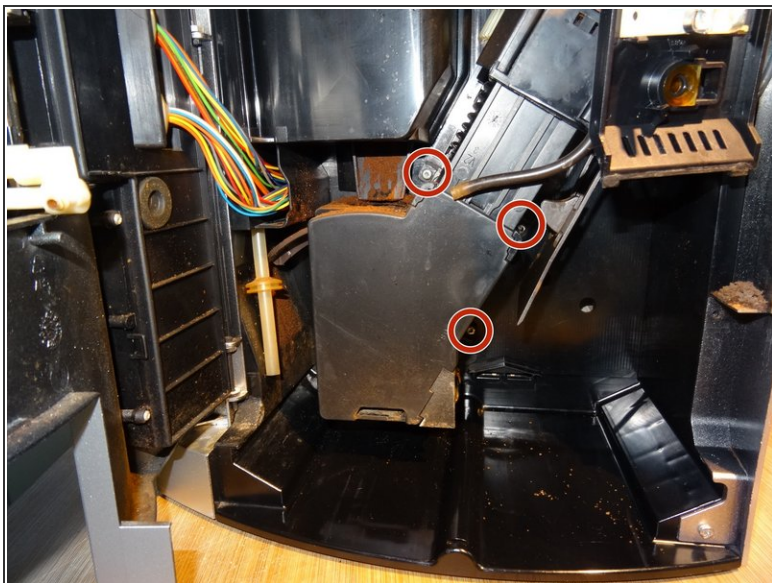
- Remove the silicone hose leading from the steam valve to the coffee spout. If it is secured with a cable tie which must be removed first.
- The front cover is now free and can be opened.

## Step 8 — Removing Jura Impressa S95 brewgroup



- ⓘ The hot water from the boiler flows using a pressure hose with elbow connector towards the drainage valve. The connector is secured with a clamp.
  - Pull the clamp from the connector.
  - Lift the elbow connector up from the drainage valve. You may need some force.
- ✦ The connector is sealed with an O-ring. The ring may remain either on the connector itself or in the drainage valve. Replace it when reassembling.

## Step 9



- Remove the three Torx T15 screws, one on the lower left side, two on the lower right side.
- Now the brew group can be removed. It is fixed on the upper edge with latches. First pull on the lower edge, then lower the brew group. You can remove it, wenn the latches on the upper edge come free.
- For dissassembling and maintanace of the brew group [use this guide](#).
- For dissassembling and maintanace of the drainage valve [use this guide](#).

To reassemble your device, follow these instructions in reverse order.