



Removing Minolta X-370 Lens Holder

The lens holder can sometimes break or you need to access the inside of the camera. This guide will help you through these steps.

Written By: Nick



INTRODUCTION

You will be removing some leather grips, which you will reuse, to access some screws. Be careful not to tear these grips.

TOOLS:

- [Metal Spudger](#) (1)
 - [Phillips #00 Screwdriver](#) (1)
-

Step 1 — Minolta X-370 Battery Replacement



- Flip the camera so that the bottom is facing you.
- Take a spare coin and unscrew the battery cover off.

Step 2



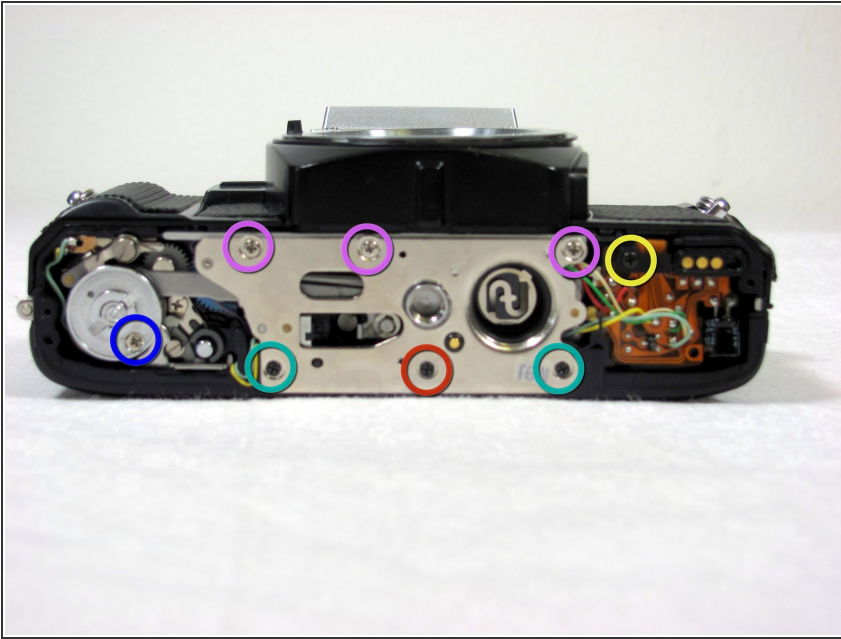
- Remove the batteries, making sure to note their proper alignment.

Step 3 — Bottom Cover



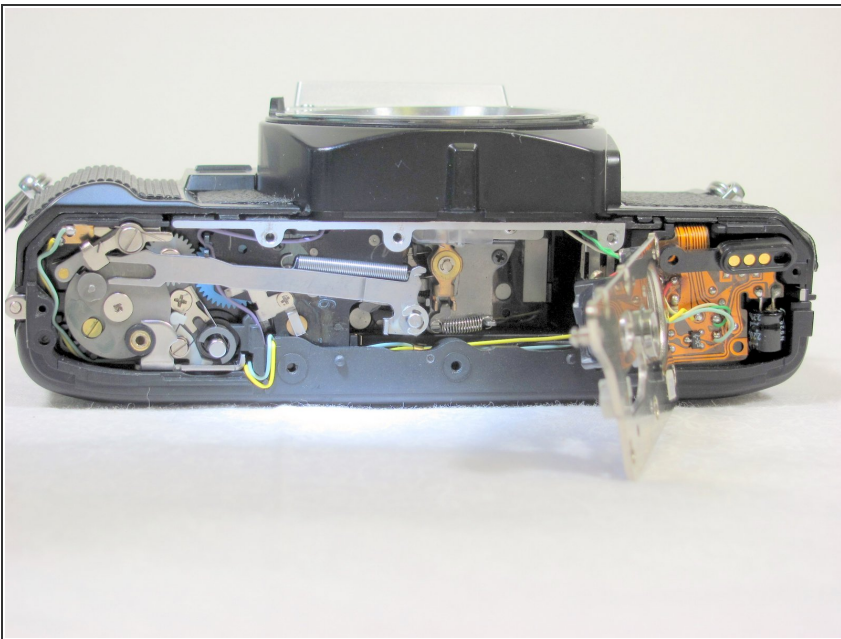
- Remove two 4.8mm screws.
- Remove one 3.4mm screw.
- Remove one 2.65mm screw.
- Lift off the back cover.

Step 4



- Remove three 3.5mm screws.
- Remove two 3.8mm screws.
- Remove one 6.35mm screw.
- Remove one 4mm screw. Lift off the disk.
- Remove one 5.11mm screw.

Step 5



- Lift up the silver, metal piece
- ⓘ Please note that some internal pieces may come loose during this process.

Step 6 — Lens Holder



- Remove four 4.45mm screws and remove the alignment ring.
- Remove the interior metal ring and the black plastic ring. Pay attention to the spring's location.
- ⚠ Pay attention to the alignment of the interior metal ring and the black plastic ring.

Step 7



- Remove the two black stoppers.
- Using the metal spudger, remove the two triangular hangers.

Step 8



- Using the metal spudger, peel off the right leather cover.
- ⓘ Be careful not to tear the cover because you will need to use it again.

Step 9



- Use the metal spudger to remove both the grip cover and the left leather cover.
- ⓘ Be careful not to tear the covers because you will need to use them again.

Step 10



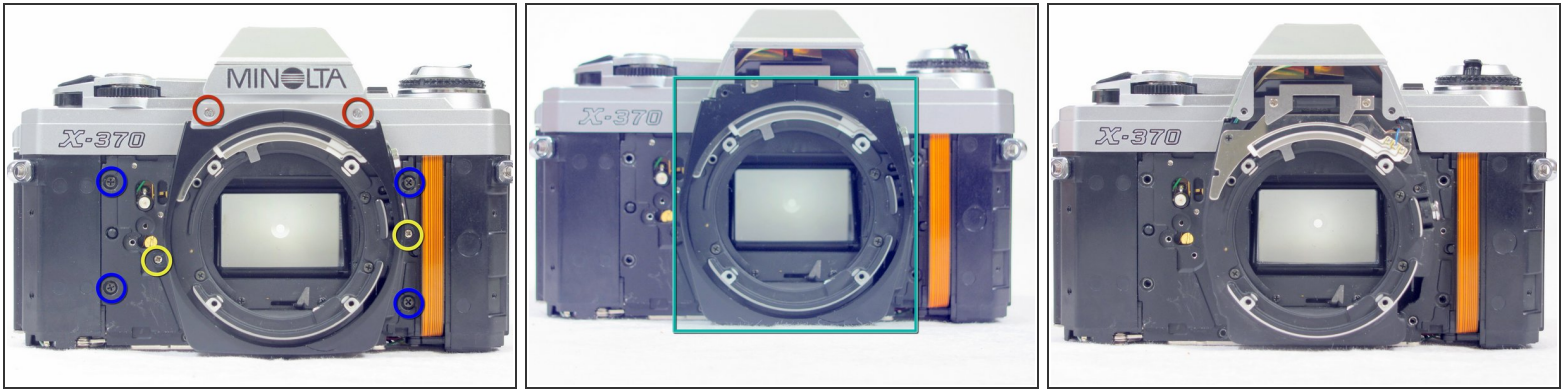
- Remove two 5.3mm screws.
- Remove two 5.3mm screws.
- Remove one 2.35mm screws.

Step 11



- Remove the left and right plastic covers.

Step 12



- Remove two 6.65mm screws.
- Remove two 2.93mm screws.
- Remove four 5.3mm screws.
- Remove the black plastic lens holder.

To reassemble your device, follow these instructions in reverse order.