



# Removing Samsung DVD-P230 Motherboard

This guide will show you how to remove the motherboard of the Samsung DVD-P230.

Written By: Mitchell Hart

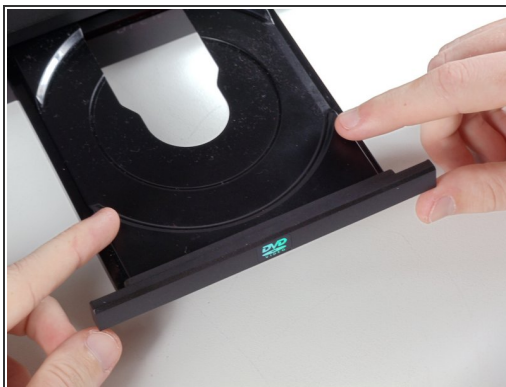




## TOOLS:

- [Phillips #2 Screwdriver](#) (1)
-

## Step 1 — Outer Cover & Faceplate



- Open the tray by pressing the eject button
- Remove the DVD tray faceplate by pushing the faceplate up off of the tray.

## Step 2



- Press the eject button to insert the tray
- After the tray is closed unplug DVD player



### Step 3



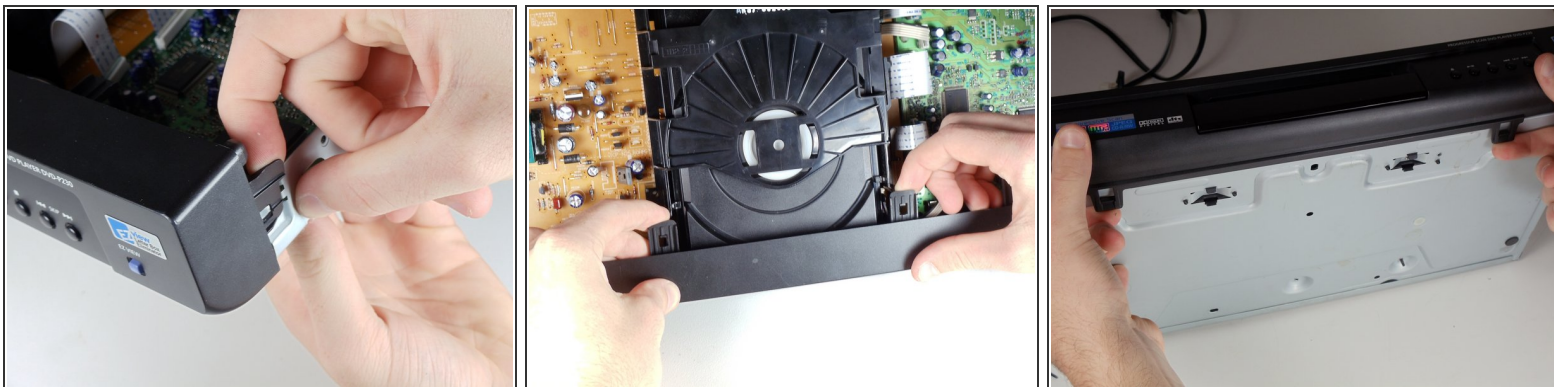
- Unscrew the 3 screws in the back.

### Step 4



- Pull the outer case upward and then towards you.

## Step 5



- There are six symmetrically placed tabs holding in the front faceplate. Unhook these six tabs to loosen the faceplate.

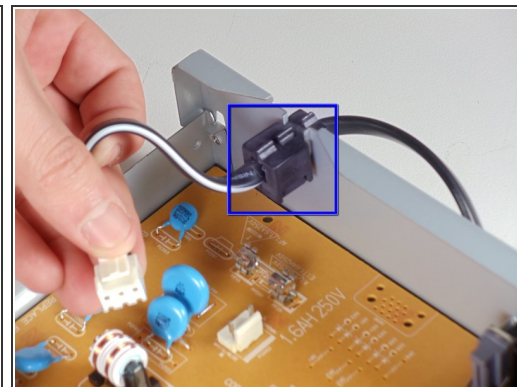
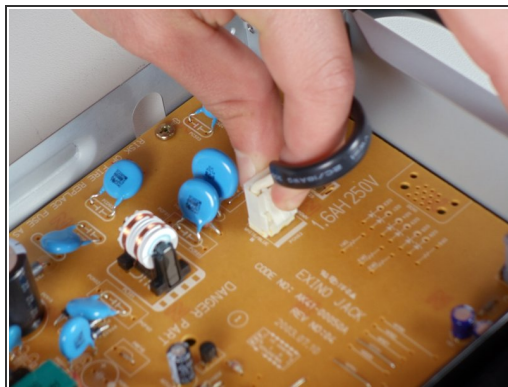
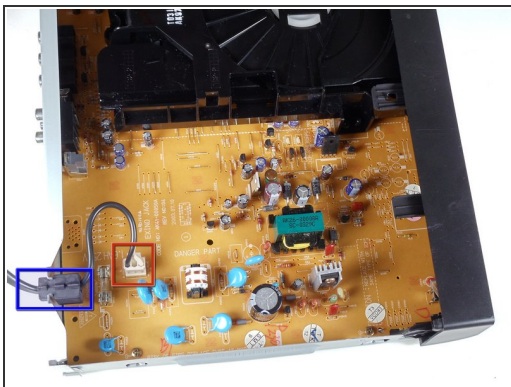
## Step 6



- Pull off front faceplate. This may take a couple of tries to get all six tabs unhooked simultaneously.

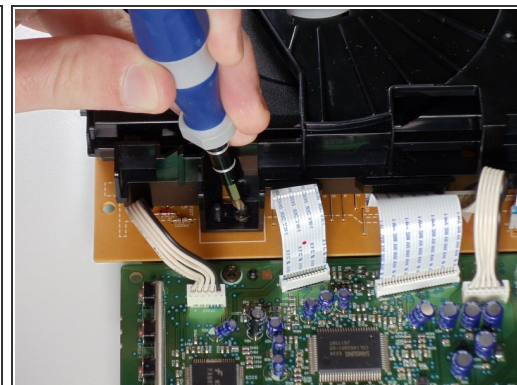
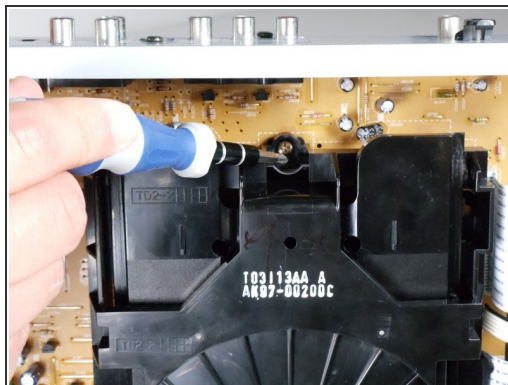
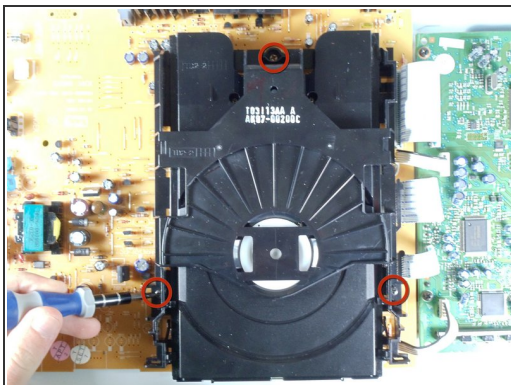


## Step 7 — Power Cord



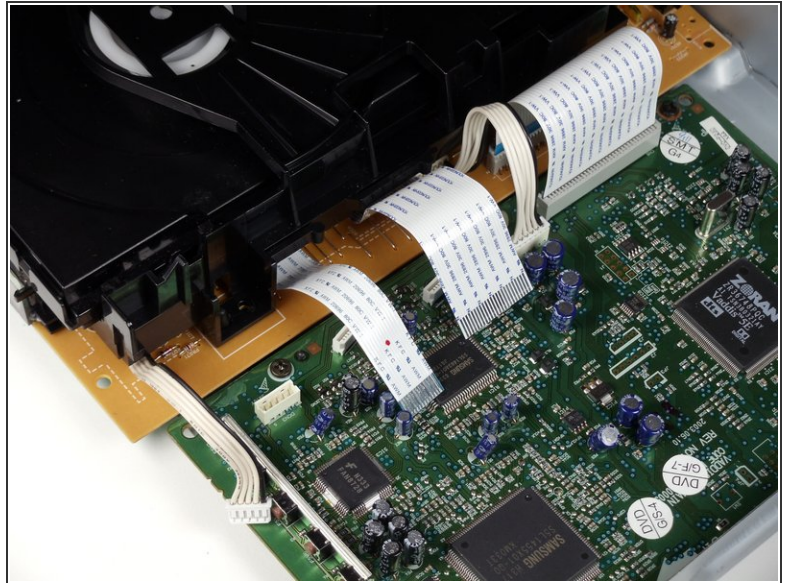
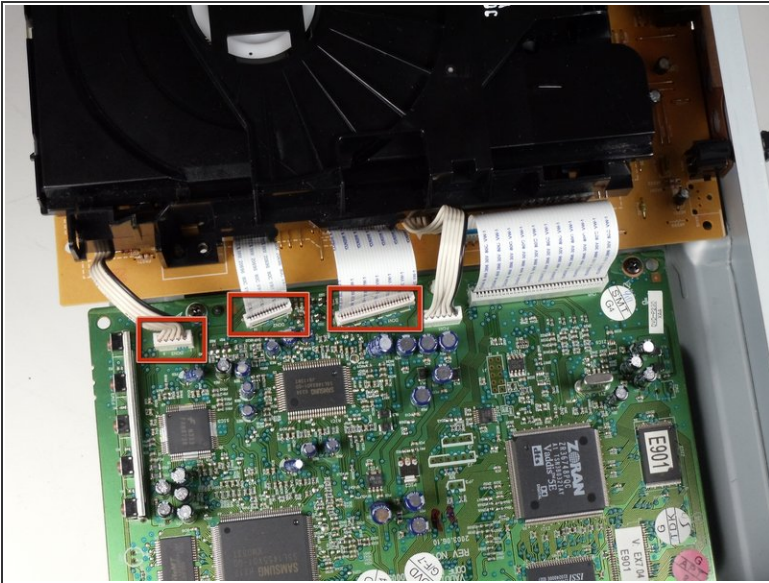
- Locate the white clip that attaches the cord to the motherboard
- Grasp clip and squeeze to release
- Lift up and remove power cord
- Slide cord mount from outer case

## Step 8 — Tray



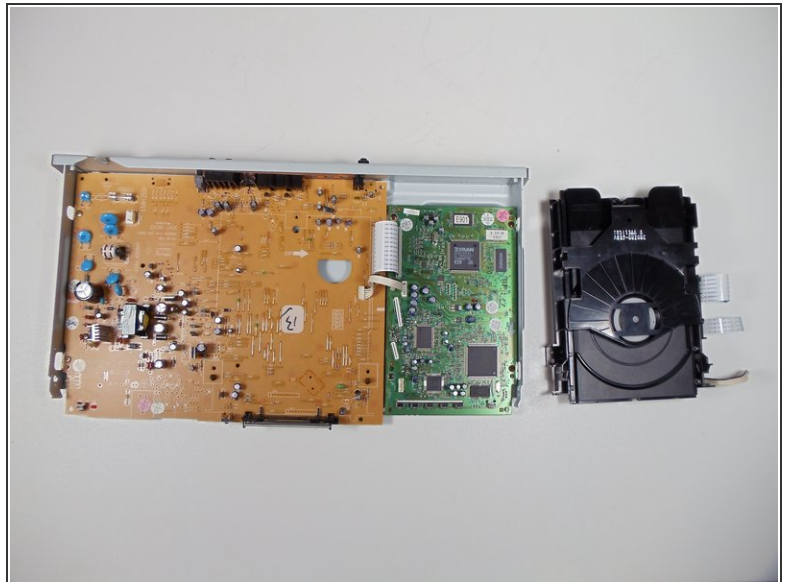
- Remove the three screws holding in the DVD tray

## Step 9



- Remove the power cord and first two ribbons by pulling them directly out of their sockets.

## Step 10



- Gently lift the DVD tray off of the motherboard.

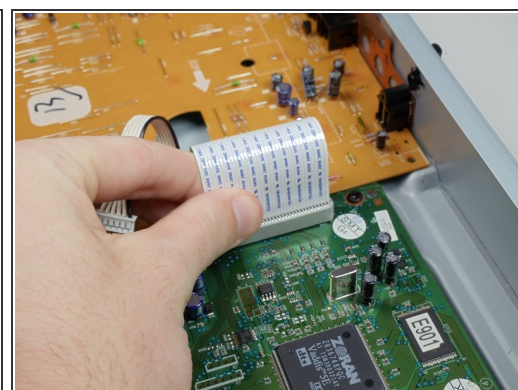
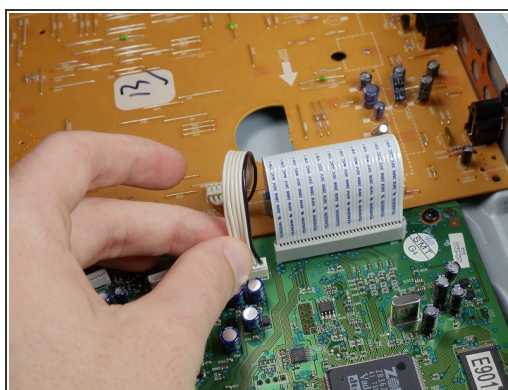
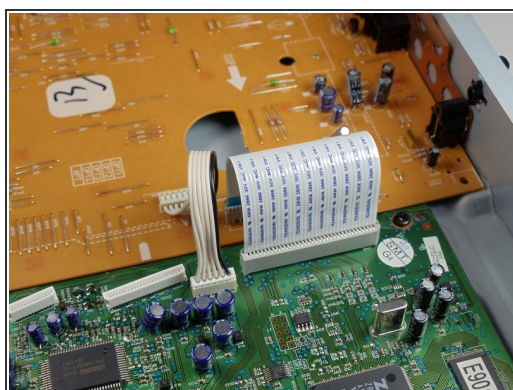


## Step 11 — Motherboard



- Unscrew the 2 screws on the motherboard
- Unscrew the 2 screws on the back

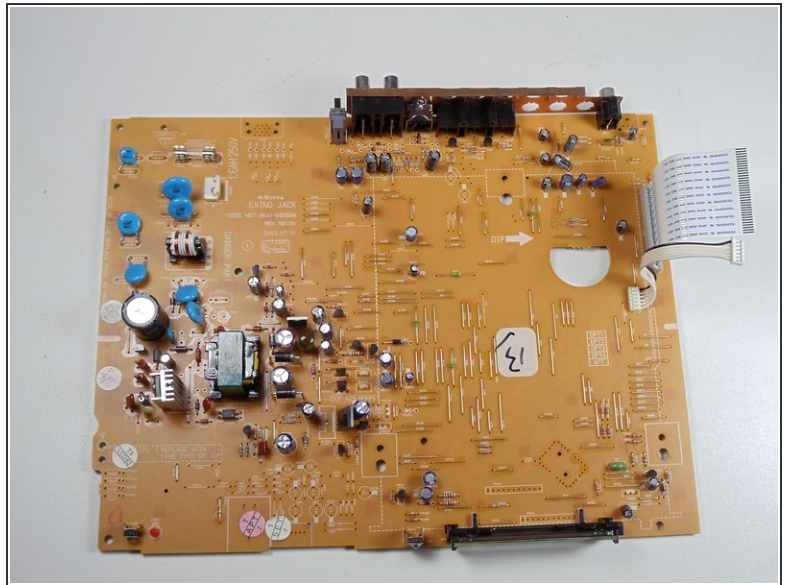
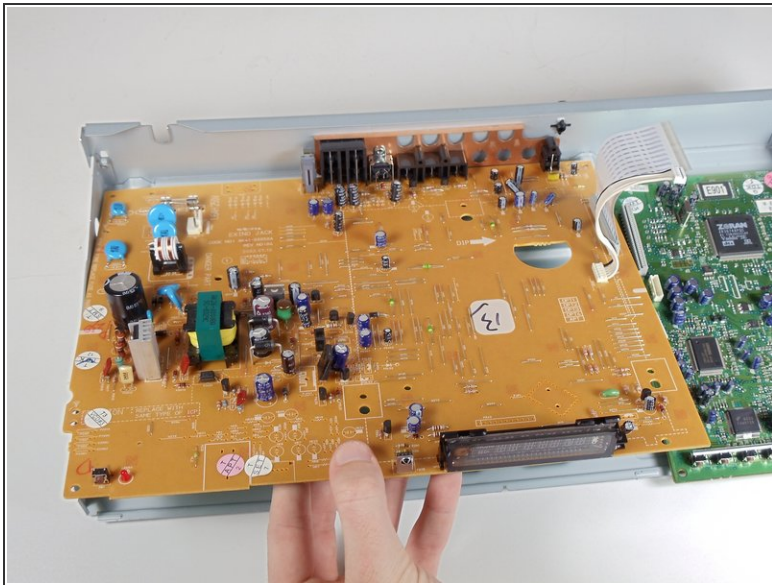
## Step 12



- Disconnect the wires and ribbon by pulling them out of their respective connections



## Step 13



- Lift board up and out of the lower case

To reassemble your device, follow these instructions in reverse order.