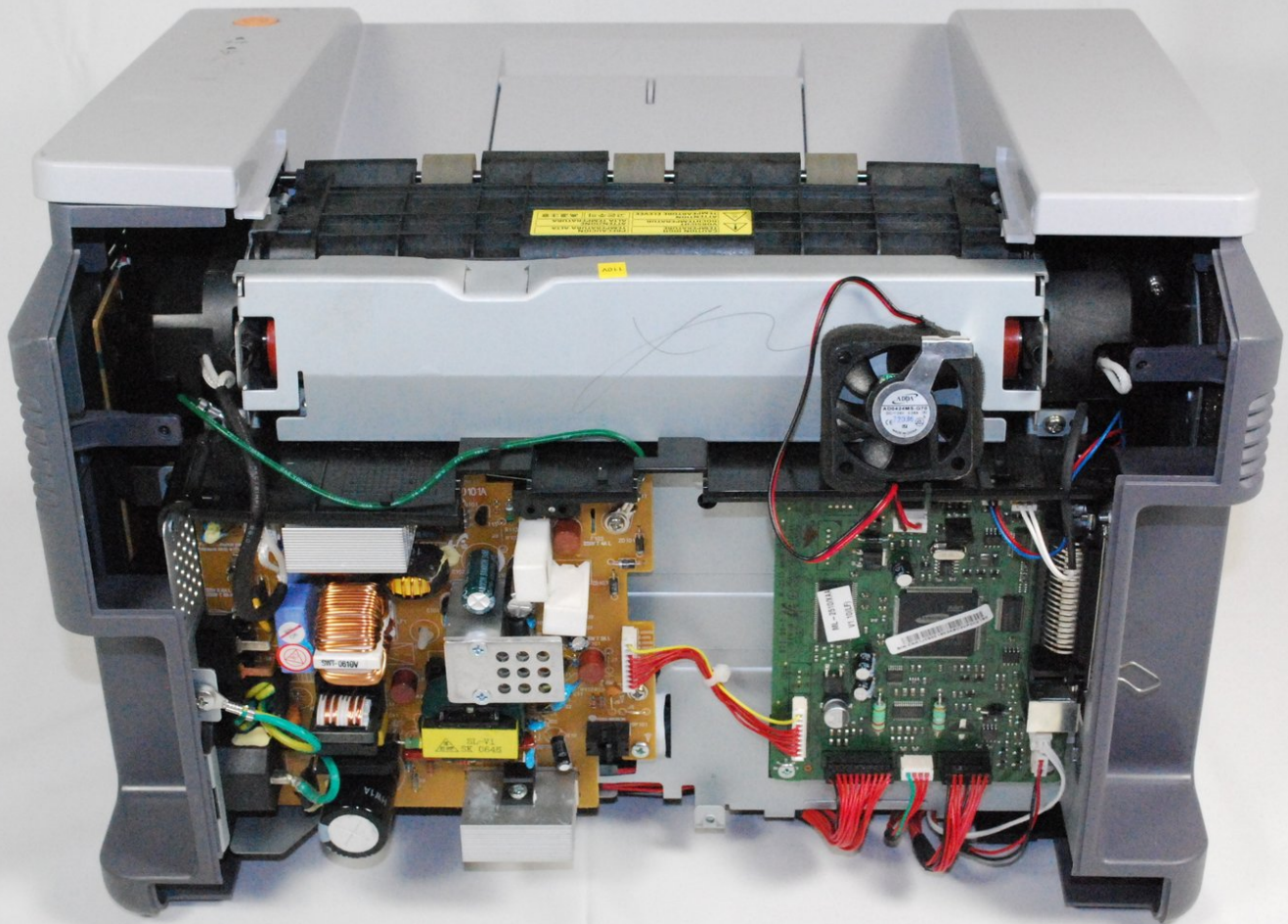




Removing Samsung ML2510 Back Panel

This guide will help you to remove the printer's rear casing for access to its interior parts.

Written By: bbaustin



INTRODUCTION

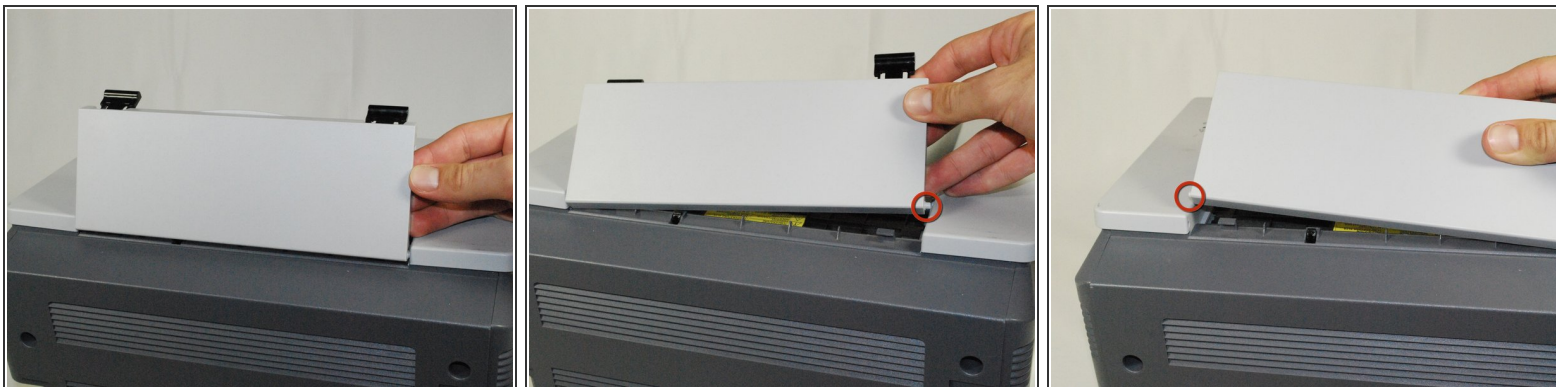
This guide will show how to remove the printer's rear casing to access the interior of the machine.



TOOLS:

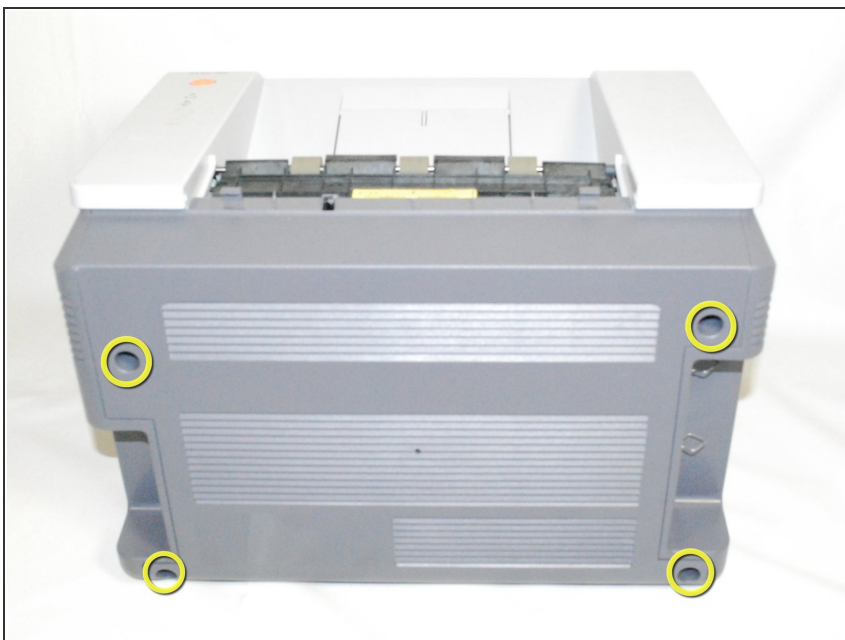
- [Phillips #2 Screwdriver](#) (1)
-

Step 1 — Removing Samsung ML2510 Back Panel



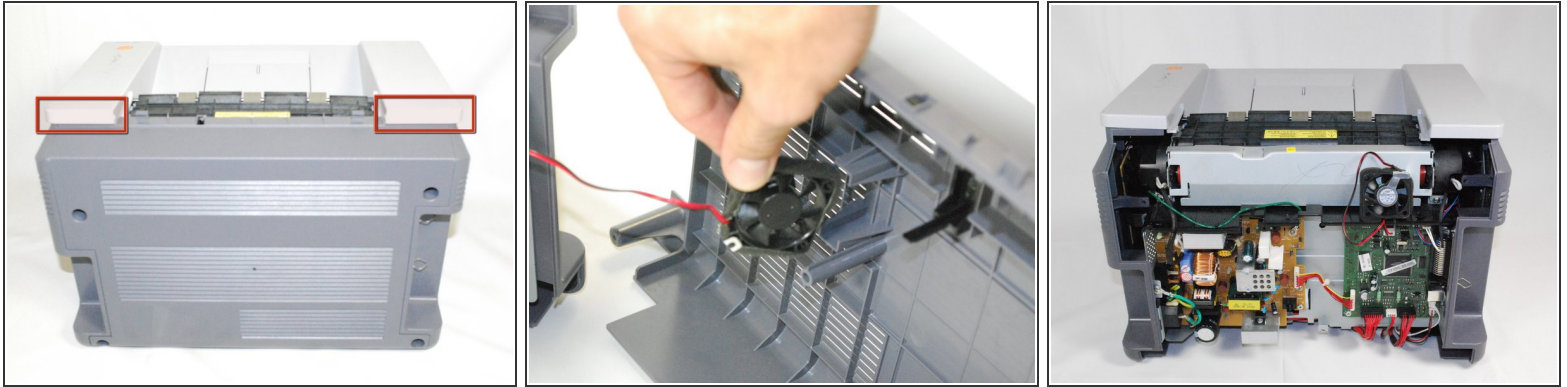
- Remove the hinged top panel by taking the small pins at the bottom of the panel out of their holes.

Step 2



- Using a Phillips #2 screwdriver, remove the four 1" long, Phillips, PH#2 screws on the back of the printer.

Step 3



- Gently lift the top panel while simultaneously pulling off the back panel.

⚠ Before pulling out the back panel entirely, make sure to remove the rear cooling fan from its slot.

To reassemble your device, follow these instructions in reverse order.