



# Removing the Covers of the Logitech Webcam Pro 9000

This will allow you to get to the main components of the device.

Written By: Timothy Forrest



---

## INTRODUCTION

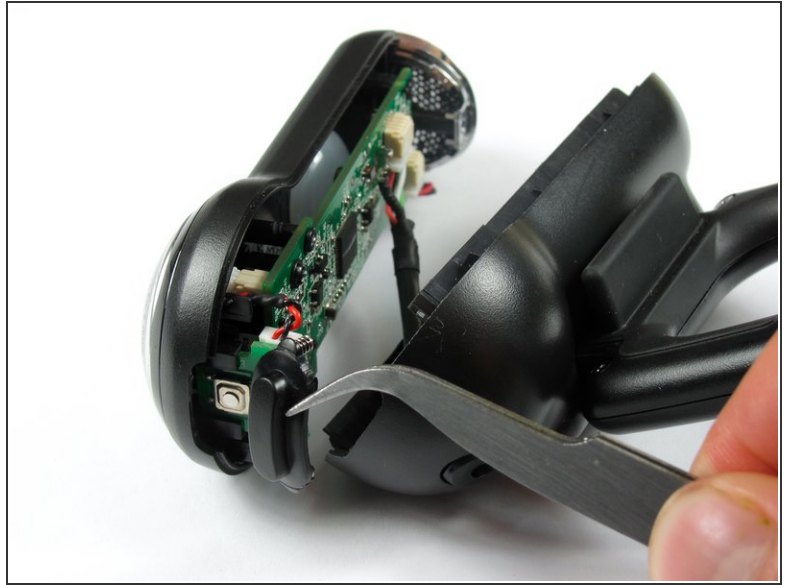
Learn how to get to the interior of a Logitech Webcam Pro 9000. There are a few extra wires, so be careful not to pull the covers apart too quickly.

---

### TOOLS:

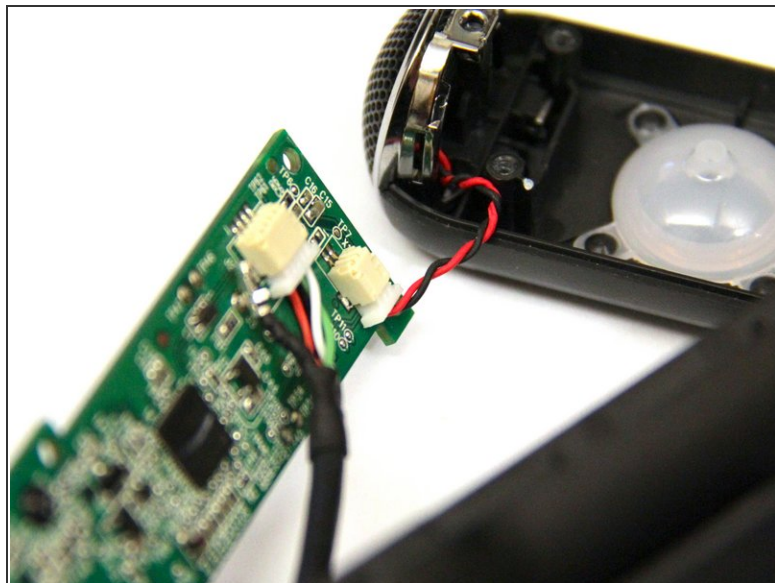
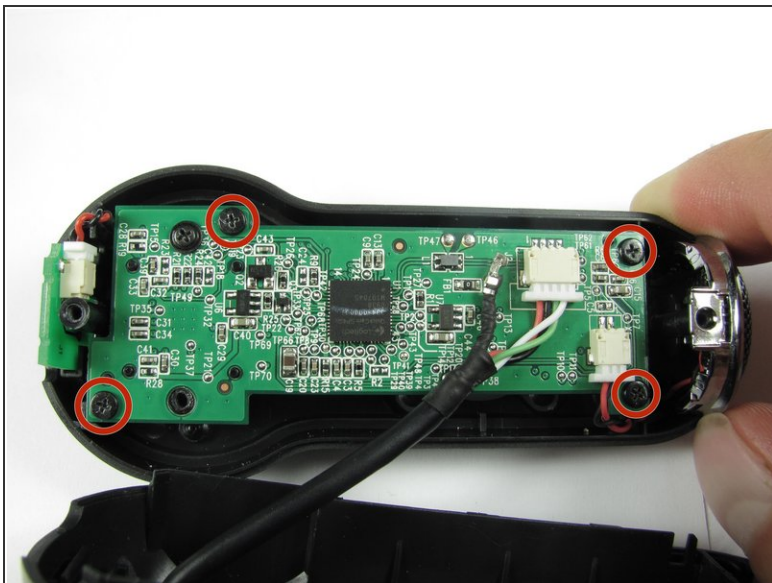
- [Phillips #0 Screwdriver](#) (1)
-

## Step 1 — Front and Back Cover



- Remove the two 8 mm Phillips #0 screws on the back cover.
- ⚠ The motherboard is attaching the two covers together, so don't separate them entirely just yet.
- ⓘ There is a button that loosens as the Phillips screws are removed. Don't be alarmed if it falls out.

## Step 2



- Remove the four 6mm Phillips#0 screws connecting the motherboard and front cover.

**⚠ DO NOT** detach the wire connecting the motherboard to the front cover.

To reassemble your device, follow these instructions in reverse order.