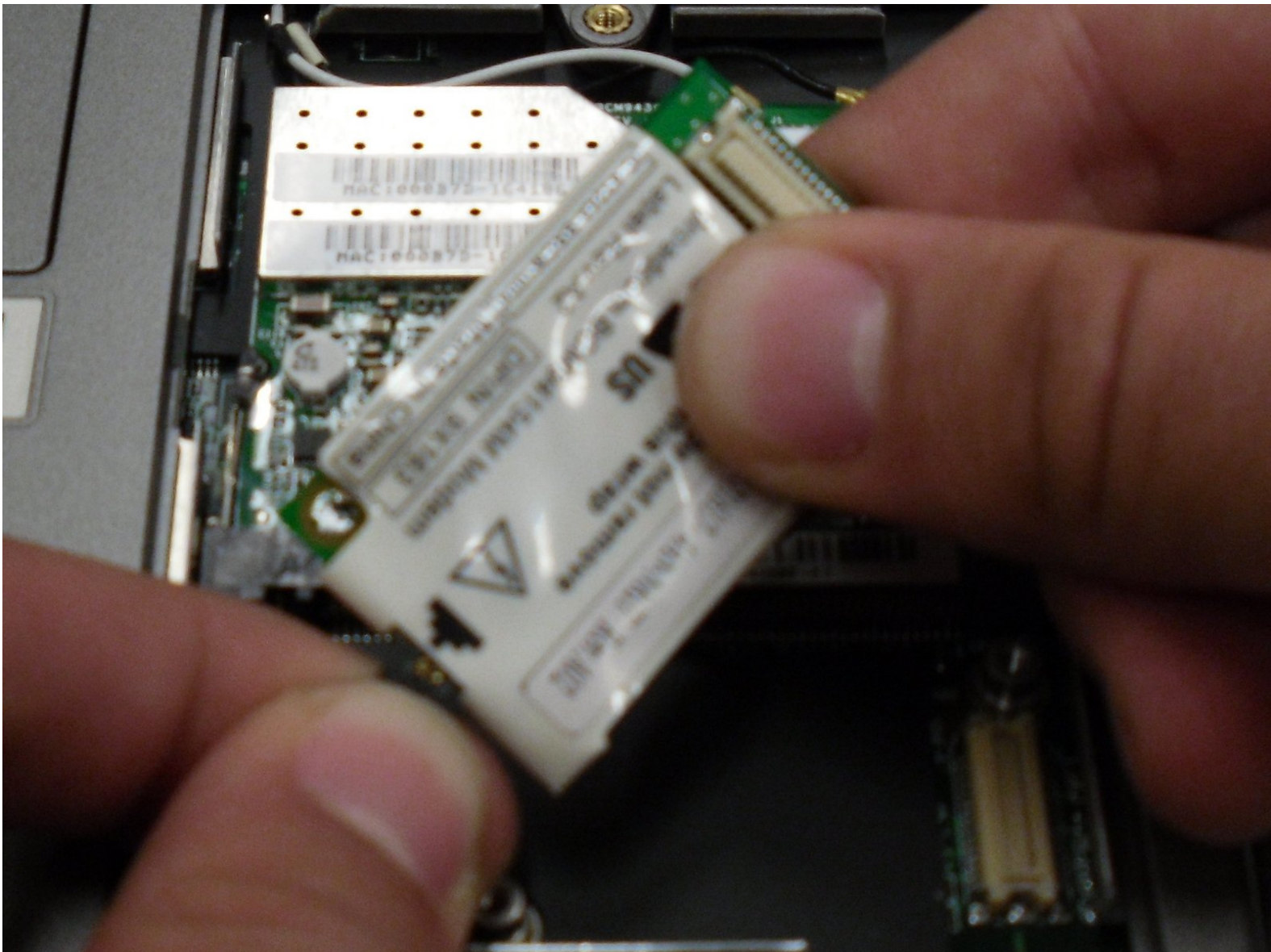




# Removing the Dell Inspiron 1150 Modem Card

The purpose of this guide is to demonstrate how to remove/replace the modem card.

Written By: Lauren

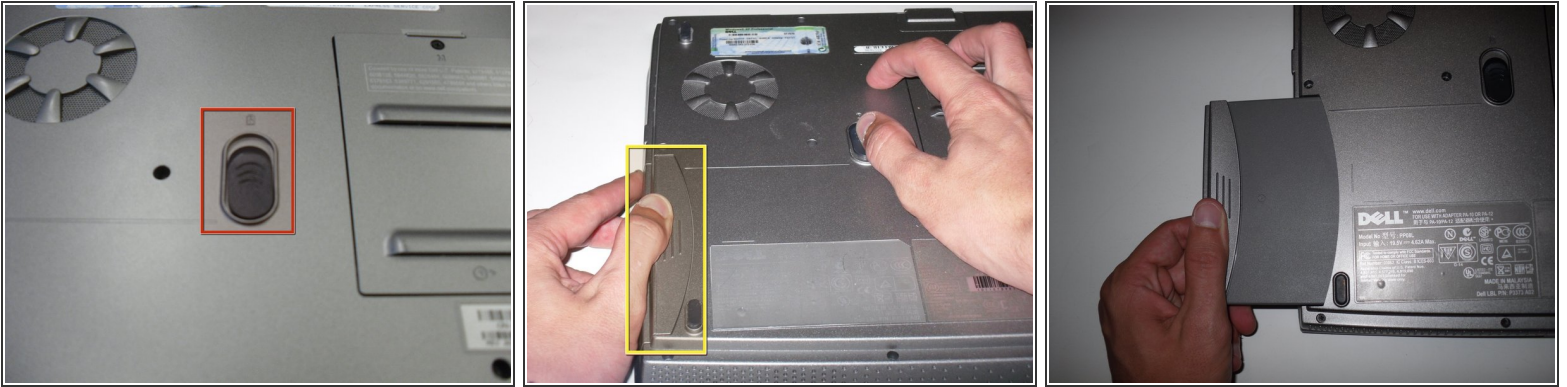




## TOOLS:

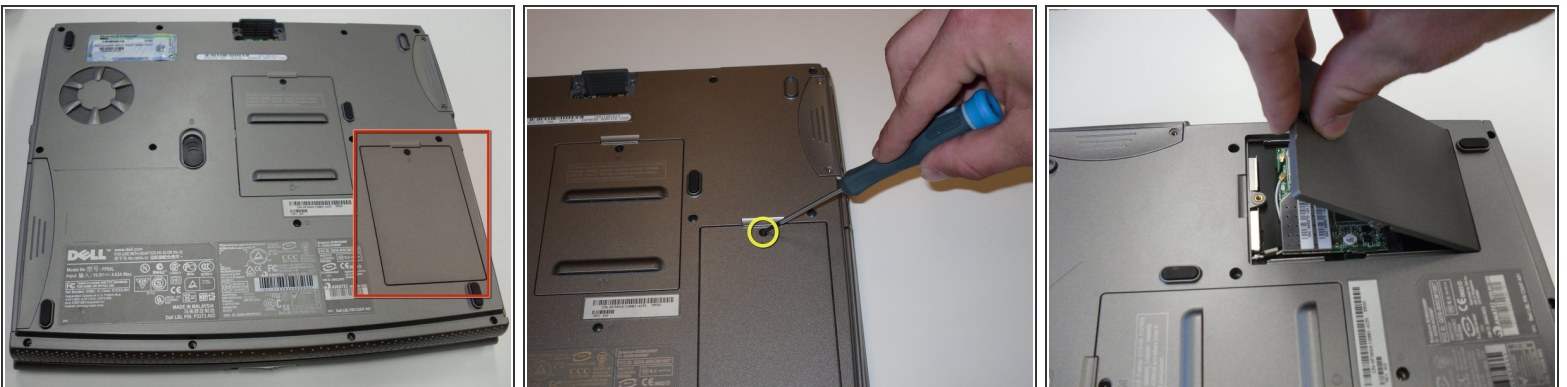
- [Phillips #1 Screwdriver](#) (1)
-

## Step 1 — Removing Dell Inspiron 1150 Battery



- Place the laptop upside down on a clean, flat surface.
- Locate the battery release button with the padlock symbol above it.
- Slide the battery release button towards the padlock symbol and hold it there. Note that the button is spring loaded and will return if released.
- ⓘ The battery is now released from the battery compartment.
- Gently remove the battery from the side of the laptop.

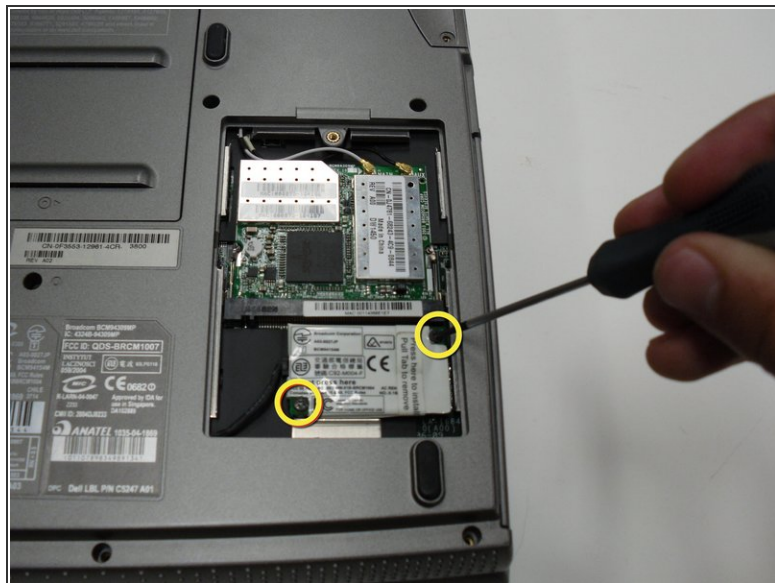
## Step 2 — Modem Card



- Turn the laptop upside down and locate the panel labeled C
- Unscrew the single screw holding the cover in place.
- Lift up the cover and remove it to expose the Modem Card.

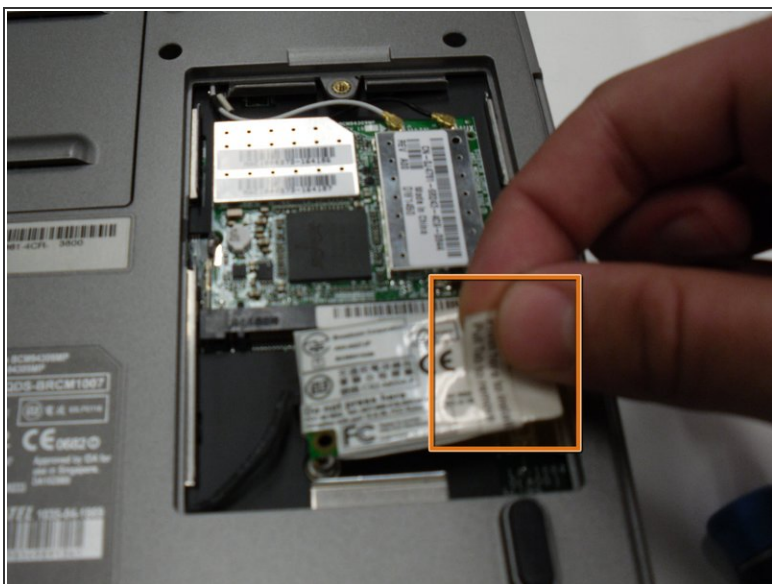


### Step 3



- Locate the Modem card.
- Remove the screws.

### Step 4



- Pull tab to lift the card out of the connector on the main board.
- Disconnect the cable attached to the left edge of the Modem card

