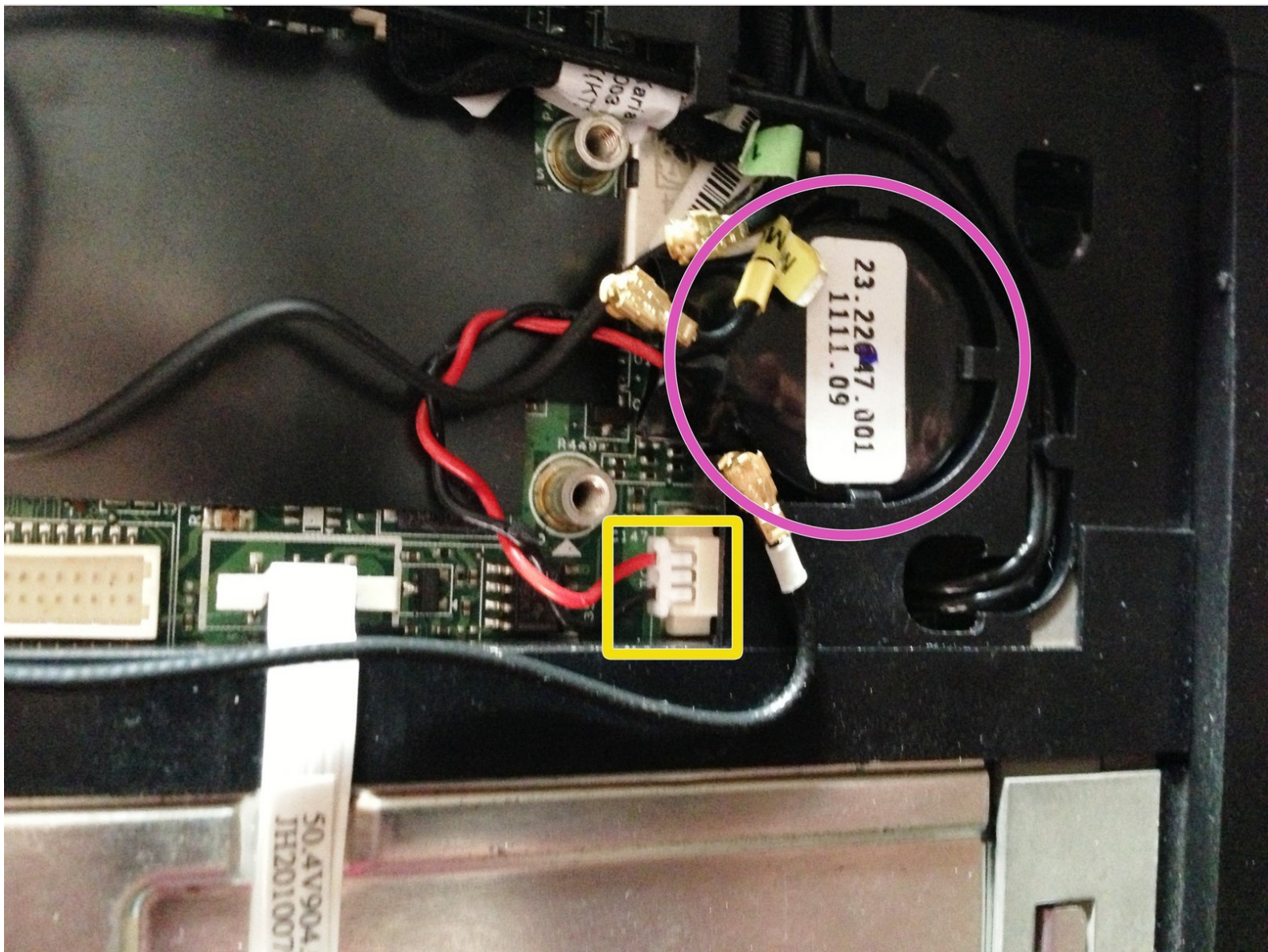




Removing the HP Elitebook 6930p RTC (CMOS) Battery

This guide will show you how to locate and remove the RTC (CMOS) battery from the laptop. Please note: Removal of this battery will not clear a BIOS password on the HP Elitebook 6930P and some HP Business Class notebooks.

Written By: Richdave



INTRODUCTION

This guide will show you how to locate and remove the RTC (CMOS) battery from the laptop. Please note: Removal of this battery will not clear a BIOS password on the HP Elitebook 6930P and some HP Business Class notebooks.



TOOLS:

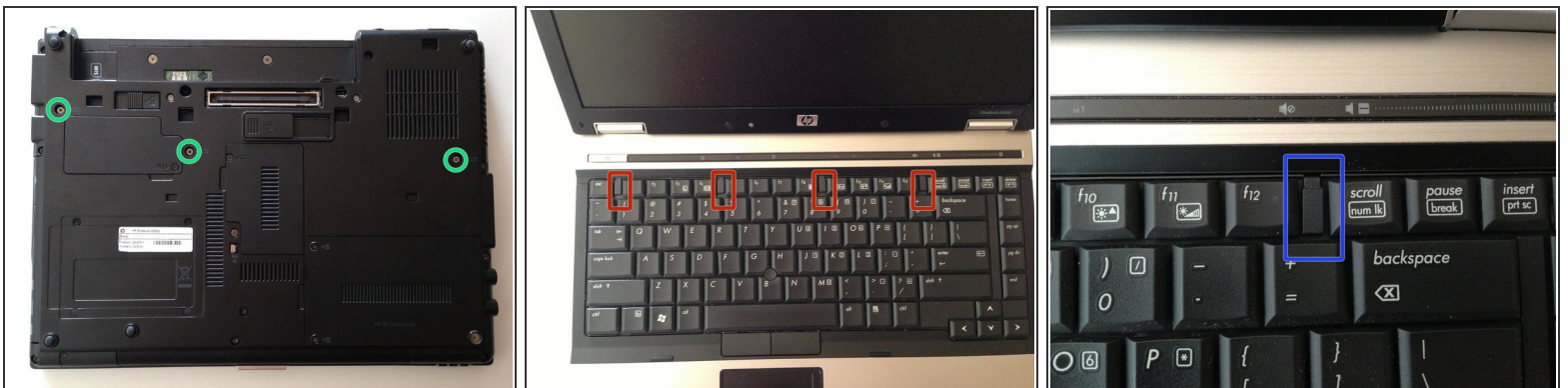
- [Phillips #1 Screwdriver](#) (1)
 - [iFixit Opening Tools](#) (1)
-

Step 1 — Battery Removal



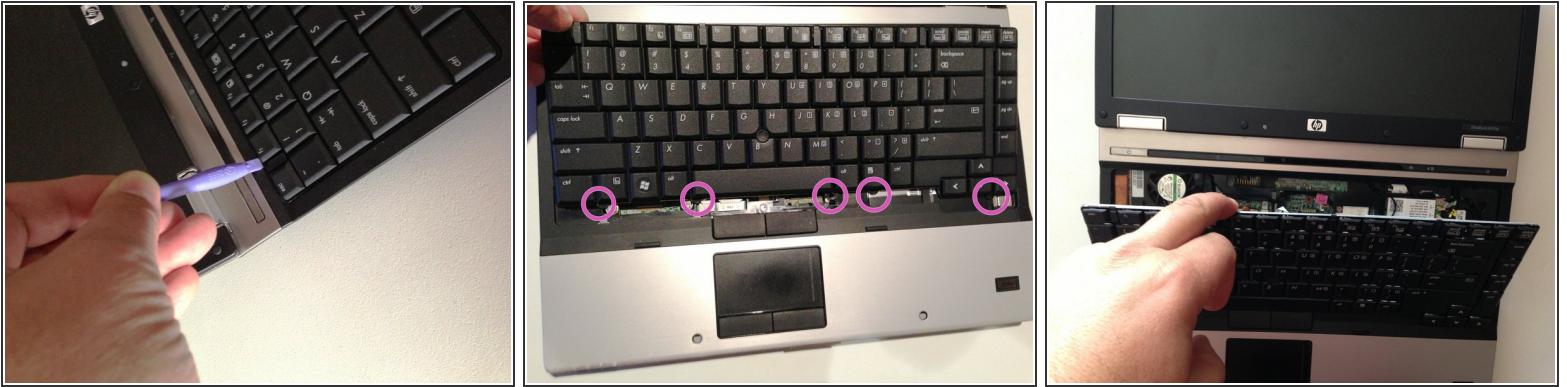
- Flip laptop over and locate the battery release button
- Push release button to the left to release battery and gently pull battery from the laptop

Step 2 — Keyboard



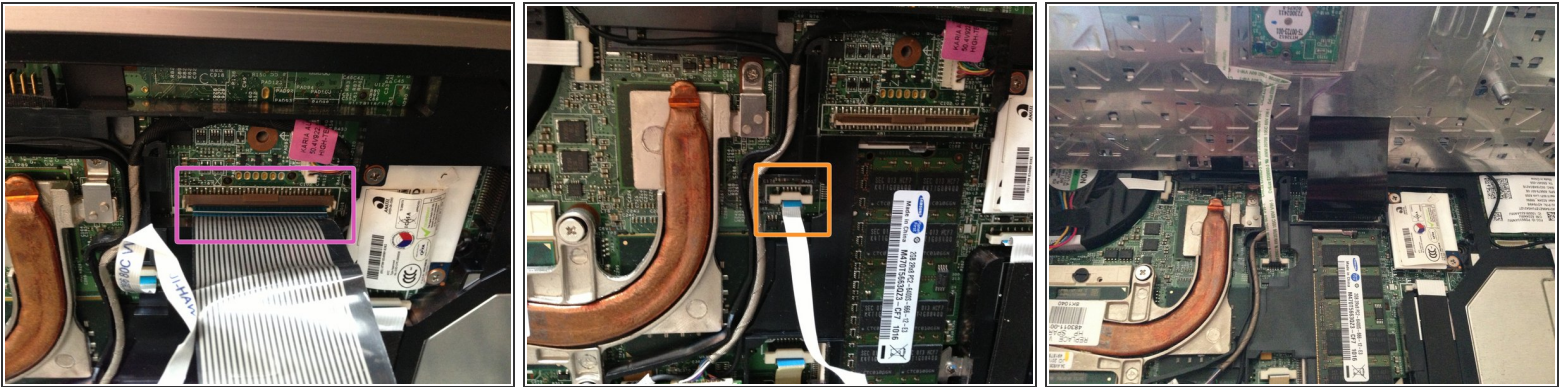
- Loosen the three Phillips 2.5×9.0 **captive** screws that secure the keyboard to the laptop
- Turn the laptop so the keyboard is facing up and locate the 4 retention tabs along the back edge of the keyboard
- Slide the retention clips toward the keyboard to release the keyboard

Step 3



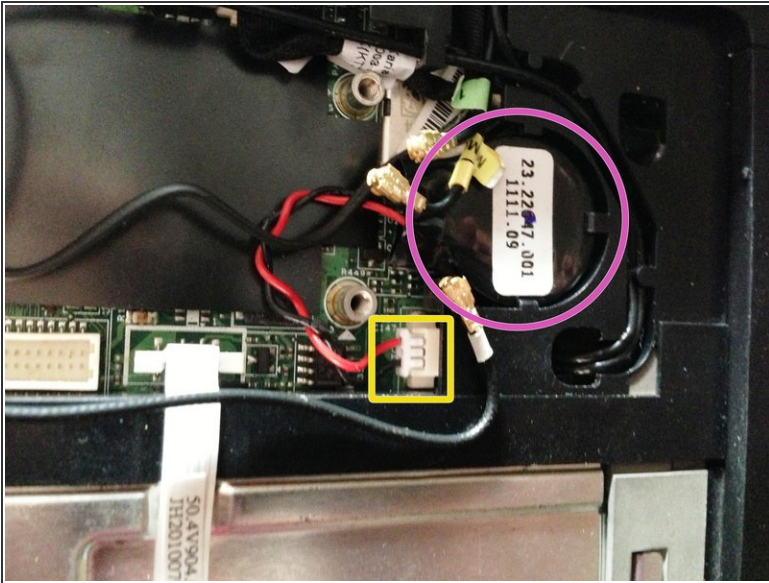
- Use a plastic pry tool to lift the rear edge of the keyboard.
- Pull the keyboard slightly towards the display to disengage the tabs along the front of the keyboard from the laptop palm rest.
- Lift the keyboard up to reveal the ribbon connectors

Step 4



- Release the larger ribbon cable by flipping the brown retainer up so it is parallel with the ribbon cable
 - Release the smaller ribbon cable by lifting the white retainer
- i** I found it easier to reinstall both cables with the new keyboard resting on the back edge

Step 5 — RTC (CMOS) Battery



- Locate the the battery
- ⓘ If the battery wires are running underneath the WLAN module you will have to remove it first. In my case it was necessary to [remove the WLAN module.](#)
- Disconnect the battery from the connector
- ⚠ Removal of this battery will not clear a BIOS password on the HP Elitebook 6930P and some other Business Class notebooks.
- Gently un-clip the battery from the plastic housing to completely remove it from the laptop

To reassemble your device, follow these instructions in reverse order.