



Removing the HP Elitebook 6930p WLAN Module

This guide will show you how to locate and remove the WLAN (WiFi) module.

Written By: Richdave



INTRODUCTION

This guide will show you how to locate and remove the WLAN (WiFi) module.



TOOLS:

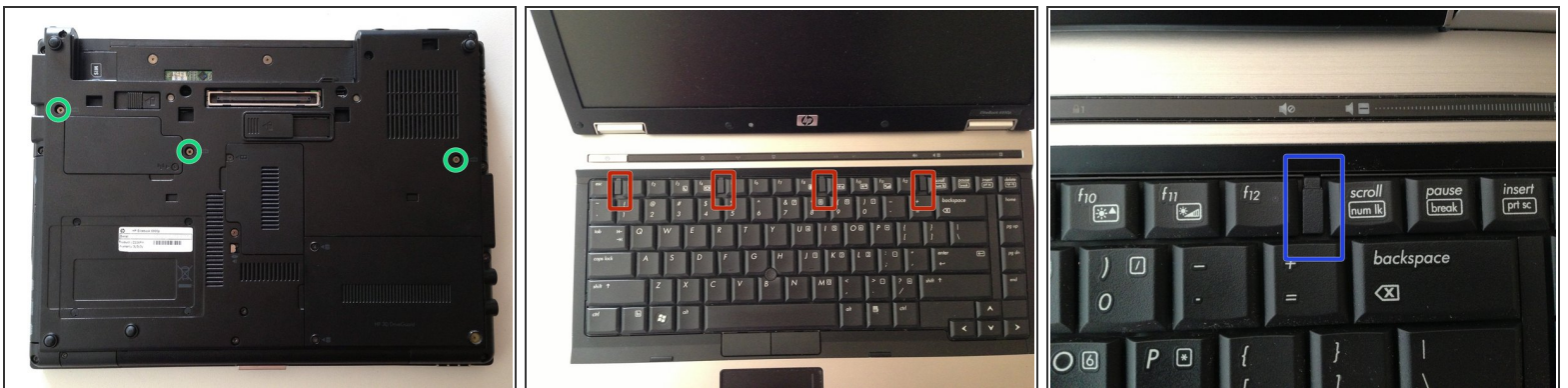
- [Phillips #1 Screwdriver](#) (1)
 - [Spudger](#) (1)
-

Step 1 — Battery Removal



- Flip laptop over and locate the battery release button
- Push release button to the left to release battery and gently pull battery from the laptop

Step 2 — Keyboard



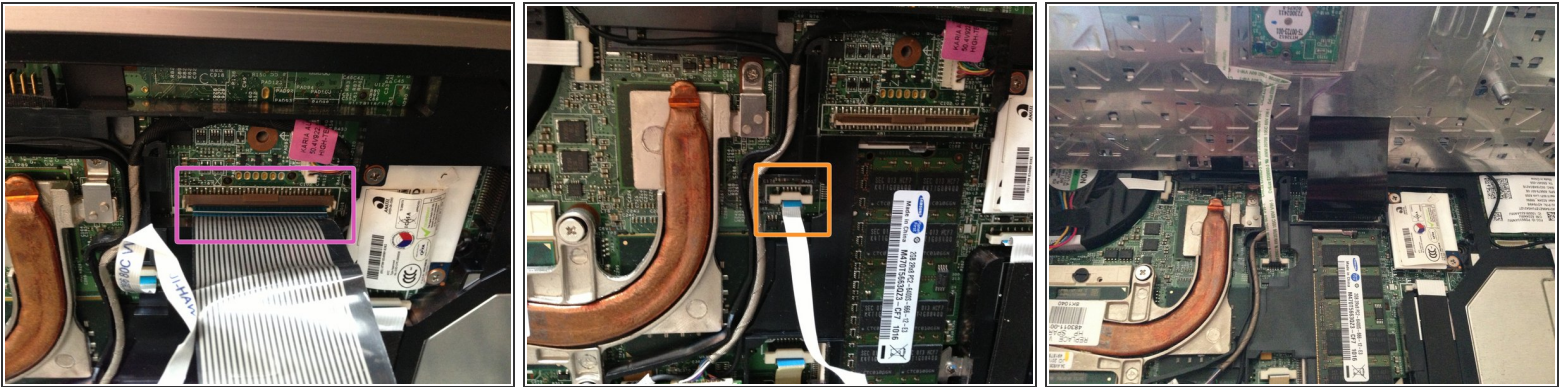
- Loosen the three Phillips 2.5×9.0 **captive** screws that secure the keyboard to the laptop
- Turn the laptop so the keyboard is facing up and locate the 4 retention tabs along the back edge of the keyboard
- Slide the retention clips toward the keyboard to release the keyboard

Step 3



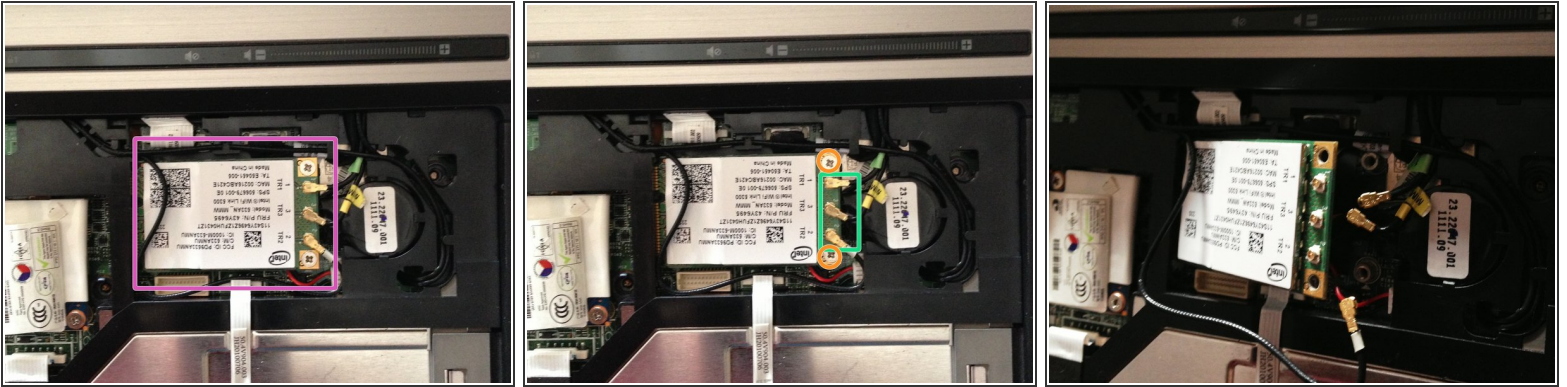
- Use a plastic pry tool to lift the rear edge of the keyboard.
- Pull the keyboard slightly towards the display to disengage the tabs along the front of the keyboard from the laptop palm rest.
- Lift the keyboard up to reveal the ribbon connectors

Step 4



- Release the larger ribbon cable by flipping the brown retainer up so it is parallel with the ribbon cable
 - Release the smaller ribbon cable by lifting the white retainer
- i** I found it easier to reinstall both cables with the new keyboard resting on the back edge

Step 5 — WLAN (WiFi) Module



- Locate the WLAN module
- Use a plastic spugder or similar to carefully remove the 3 antenna wires from the WLAN module.
- ☞ The antenna wires are colour coded tabs on them for easy reinstallation so be sure to take note of the correct order. there are coloured tabs on the wires!
- Remove the 2 M2.5×4.0 screws that secure the WLAN module into the laptop
- With the screws removed the right hand end of the WLAN module will pop up. You may now simply remove the module from the edge connector.

To reassemble your device, follow these instructions in reverse order.