



# Removing the HP Elitebook 6930p modem card

Provides detail on removing the modem card from the laptop

Written By: Richdave



---

## INTRODUCTION

Provides detail on removing the modem card from the laptop

---



### TOOLS:

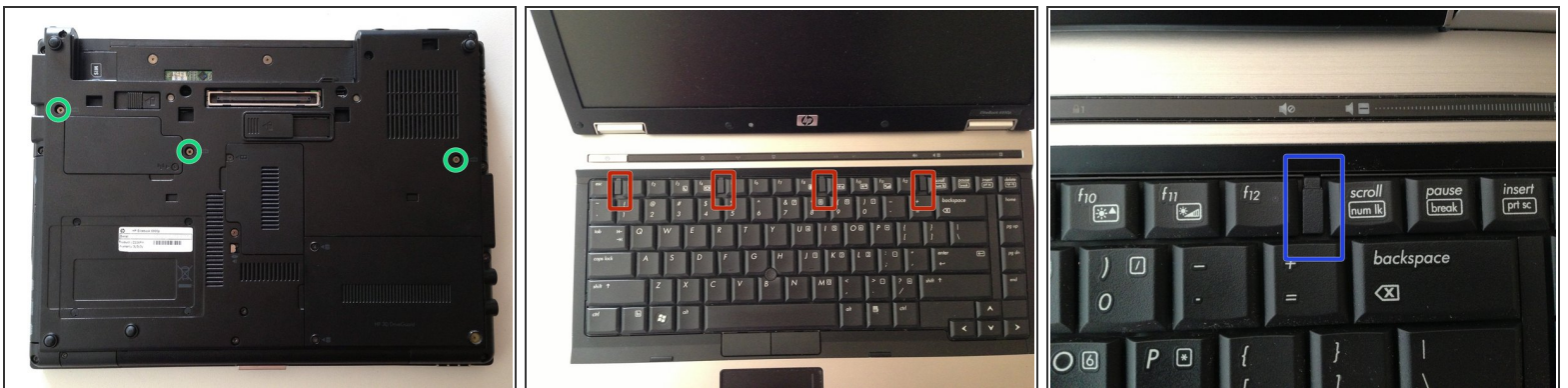
- [Phillips #1 Screwdriver](#) (1)
  - [Spudger](#) (1)
-

## Step 1 — Battery Removal



- Flip laptop over and locate the battery release button
- Push release button to the left to release battery and gently pull battery from the laptop

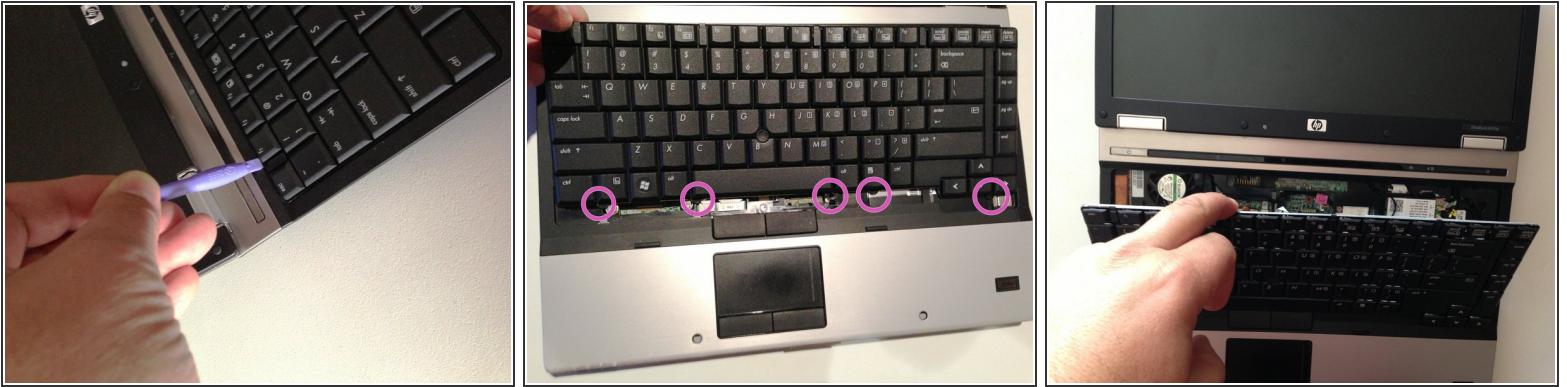
## Step 2 — Keyboard



- Loosen the three Phillips 2.5×9.0 **captive** screws that secure the keyboard to the laptop
- Turn the laptop so the keyboard is facing up and locate the 4 retention tabs along the back edge of the keyboard
- Slide the retention clips toward the keyboard to release the keyboard

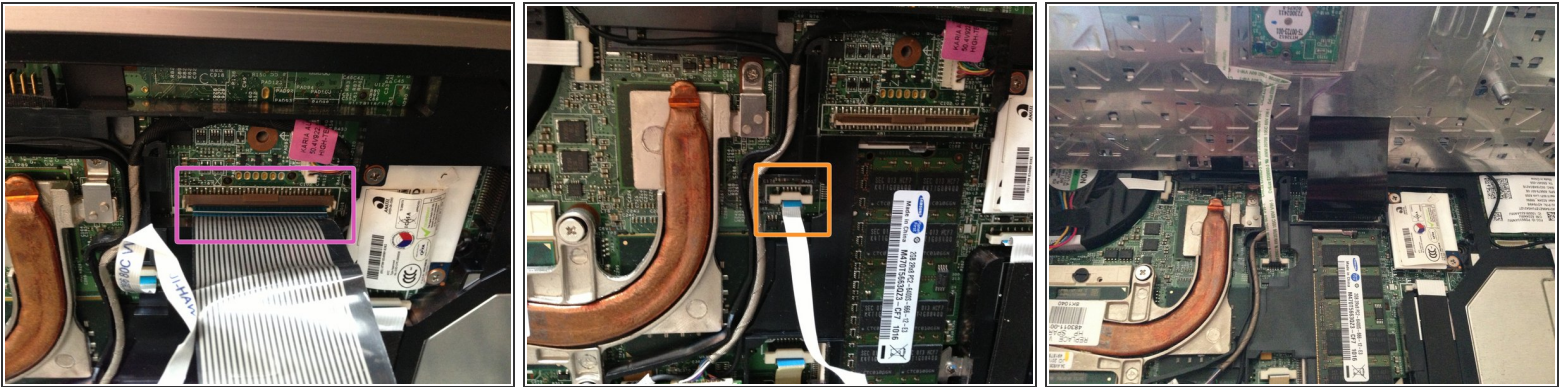


## Step 3



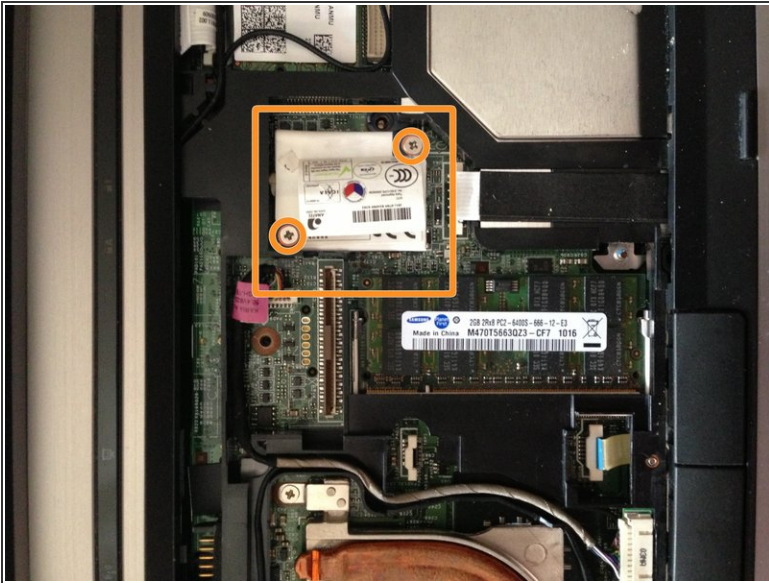
- Use a plastic pry tool to lift the rear edge of the keyboard.
- Pull the keyboard slightly towards the display to disengage the tabs along the front of the keyboard from the laptop palm rest.
- Lift the keyboard up to reveal the ribbon connectors

## Step 4



- Release the larger ribbon cable by flipping the brown retainer up so it is parallel with the ribbon cable
  - Release the smaller ribbon cable by lifting up the white retainer
- i** I found it easier to reinstall both cables with the new keyboard resting on the back edge

## Step 5 — Modem card



- Locate the modem card and remove the 2 M2.5×4.0 screws
- The modem card is it is plugged into a connector on the logic board. Gently lift the card up and out of the laptop
- ⓘ A plastic spudger may be useful in lifting the card out
- ⚠ Be careful as there is a small cable connected to the edge of the modem card closest to the LCD display
- Disconnect the cable from the modem card to complete removal

To reassemble your device, follow these instructions in reverse order.