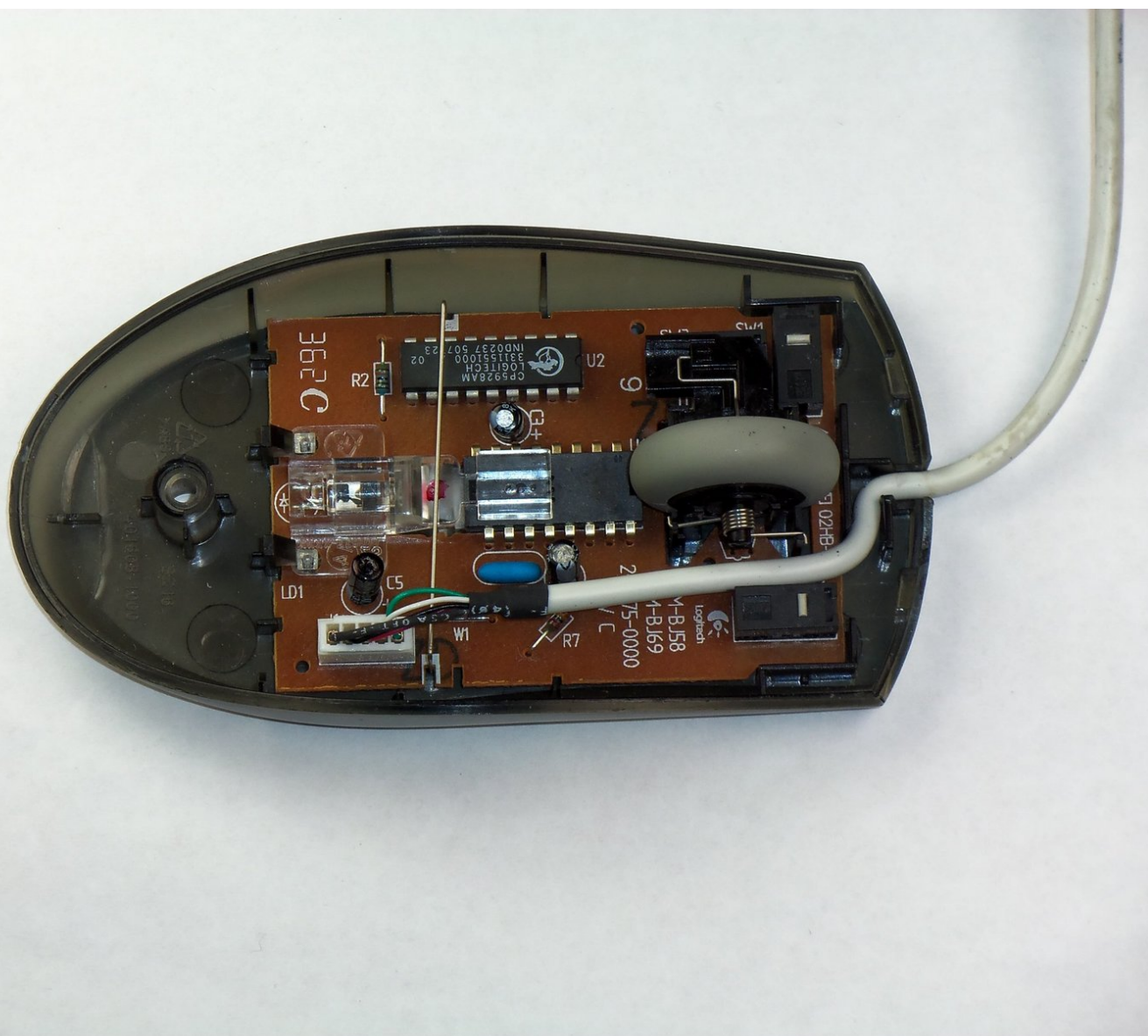




# Removing the Logitech MBJ58 Mouse Scroll Wheel

This is a prerequisite for replacing the support and resistance springs and the scroll wheel.

Written By: Conor Whatley



---

## INTRODUCTION

After removing the cover, removing the scroll wheel will allow access to the springs and the wheel itself.



### TOOLS:

- [Phillips #1 Screwdriver](#) (1)
-

## Step 1 — Top cover



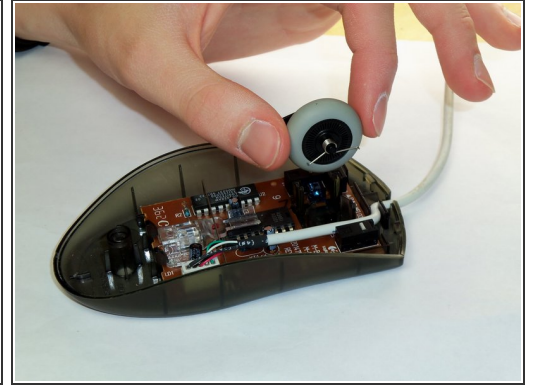
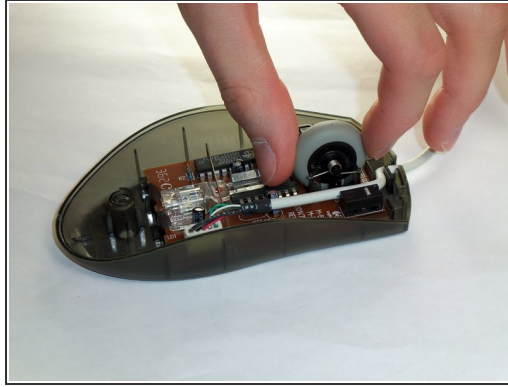
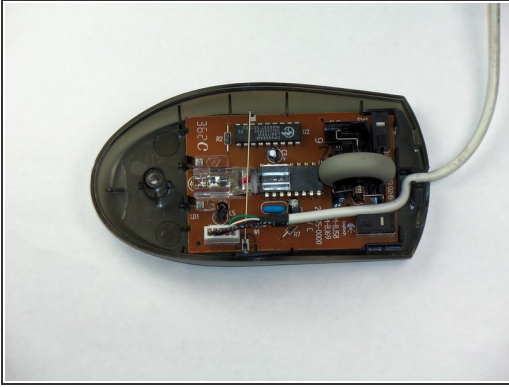
- Hold the mouse so that the bottom is facing up.
- Remove the Phillips #1 screw from the bottom half of the mouse.

## Step 2



- Place the mouse so that the bottom is resting against a hard surface.
- Gently lift the top cover of the mouse and remove it.

### Step 3 — Removing the Logitech MBJ58 Mouse Scroll Wheel



- Locate the scroll wheel on the mouse.
- Grab the scroll wheel with your thumb and index finger.
- Gently lift up, to remove the scroll wheel from the mouse.

To reassemble your device, follow these instructions in reverse order.