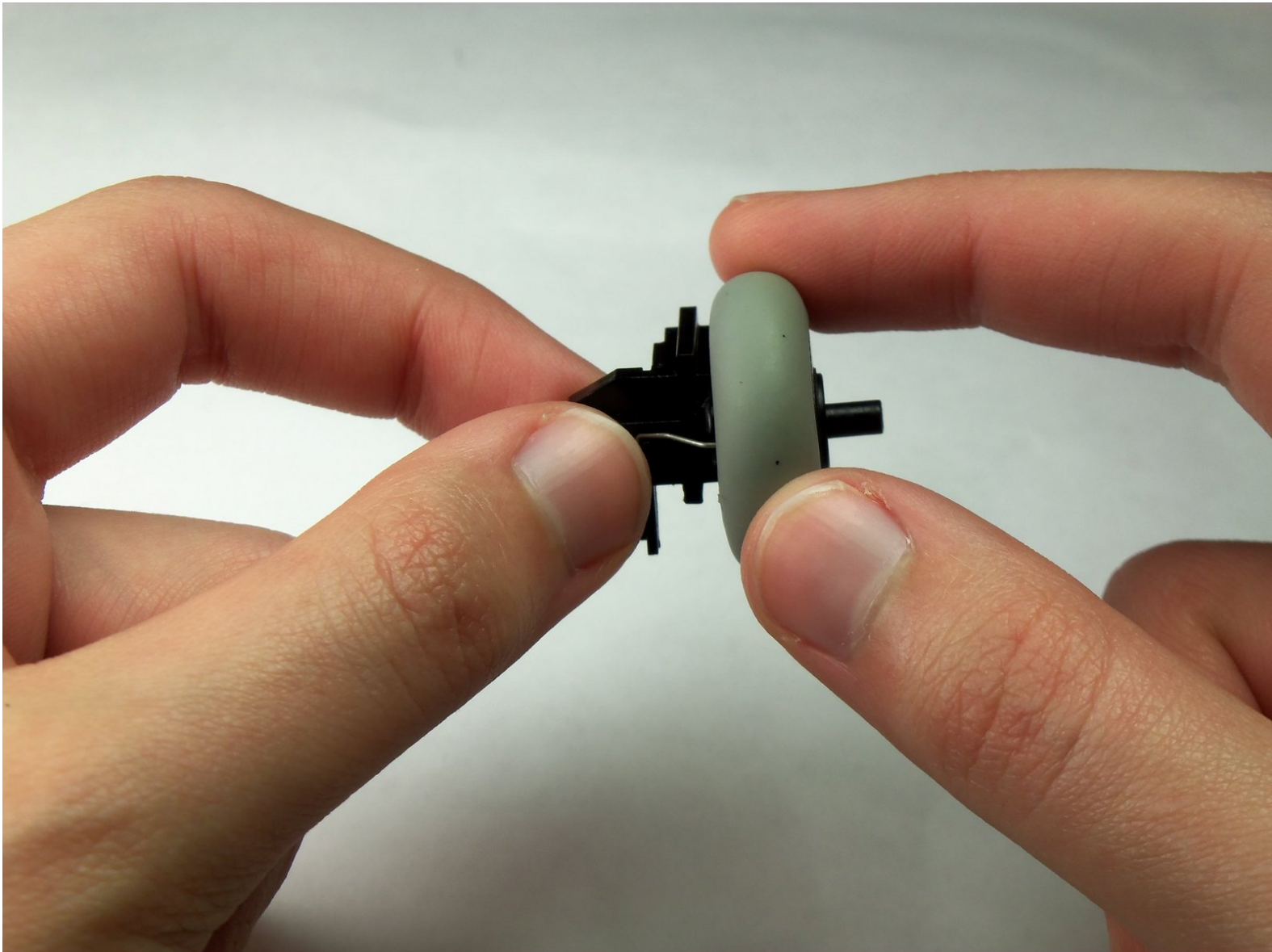




Removing the Logitech MBJ58 Scroll Wheel from its Mount

Removing the scroll wheel from the wheel mount will allow you to access the resistance spring.

Written By: Conor Whatley



INTRODUCTION

You will learn how to remove scroll wheel from the wheel mount.



TOOLS:

- [Phillips #1 Screwdriver](#) (1)
-

Step 1 — Top cover



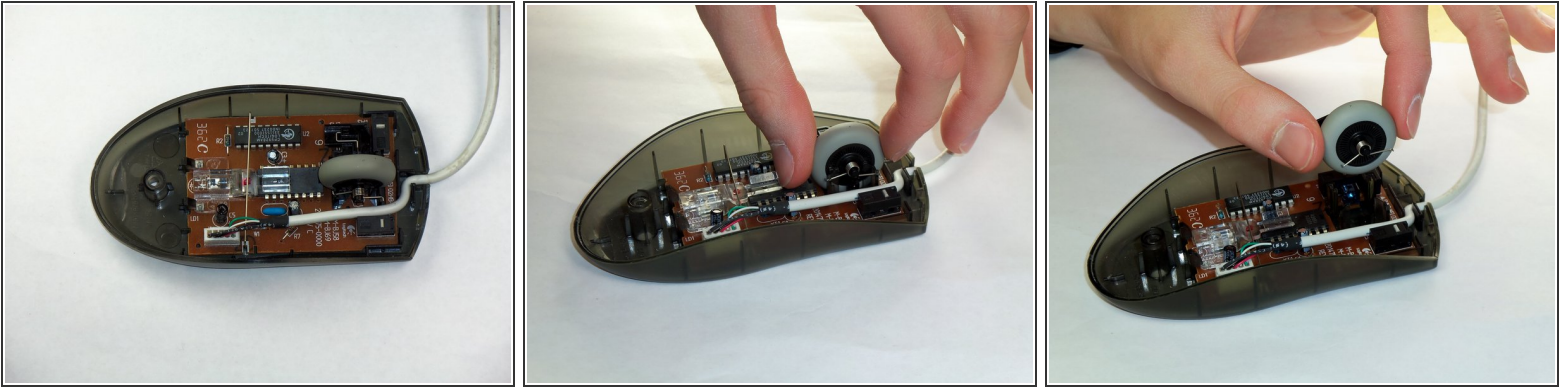
- Hold the mouse so that the bottom is facing up.
- Remove the single Phillips #1 screw from the bottom half of the mouse.

Step 2



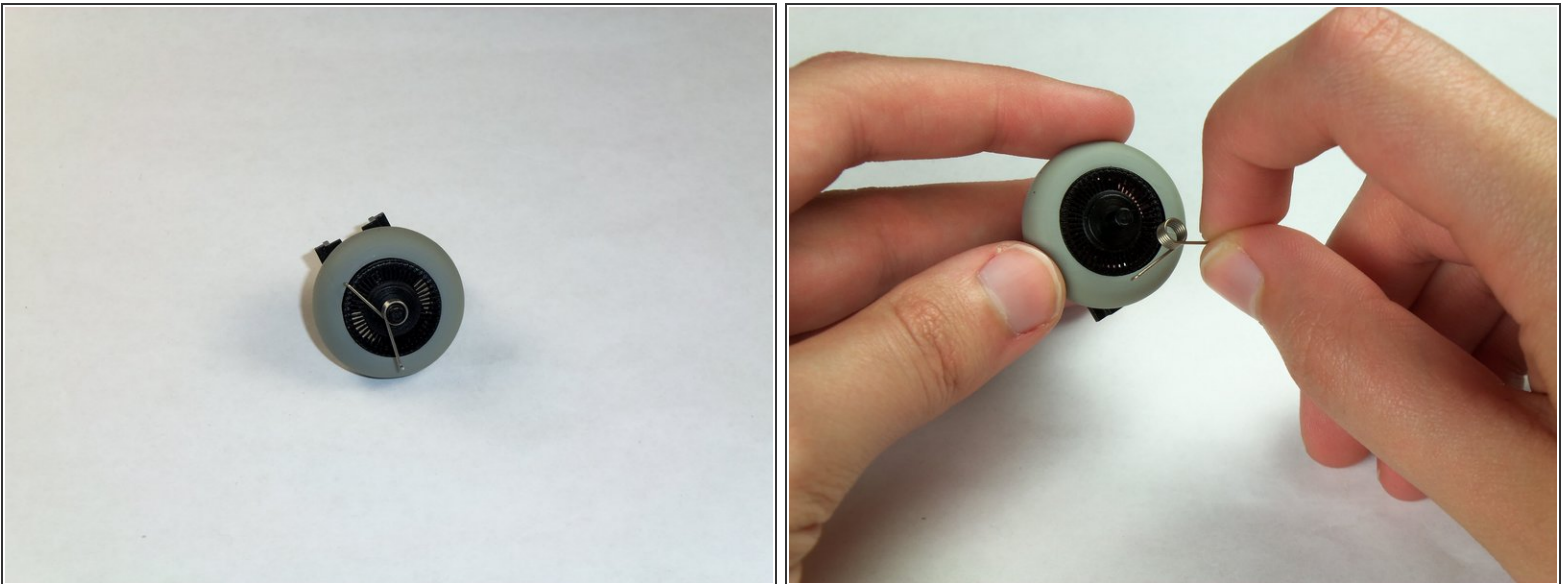
- Place the mouse so that the bottom is resting against a hard surface.
- Gently lift the top cover of the mouse, and remove it.

Step 3 — Removing the Logitech MBJ58 Mouse Scroll Wheel



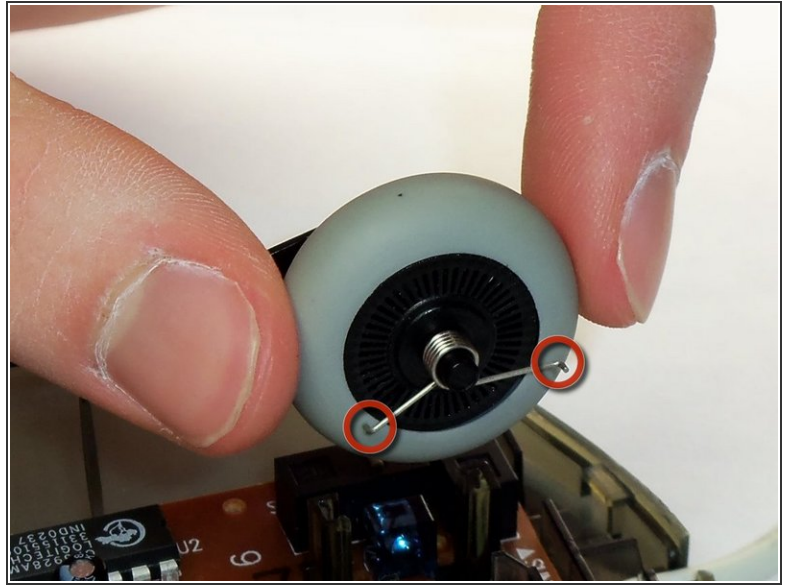
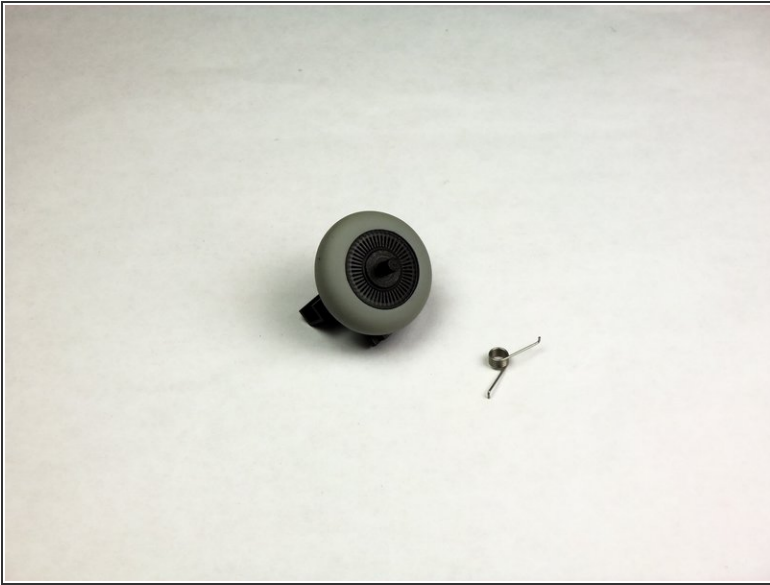
- Locate the scroll wheel on the mouse.
- Grab the scroll wheel with your thumb and index finger.
- Gently lift up, to remove the scroll wheel from the mouse.

Step 4 — Support Spring



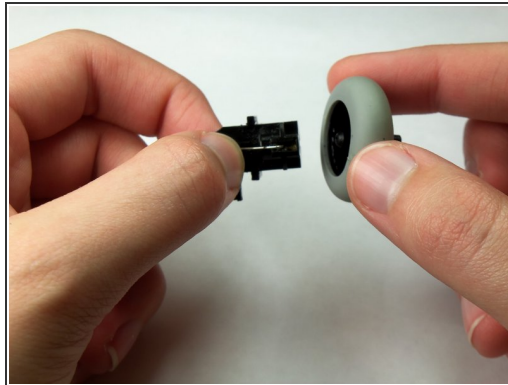
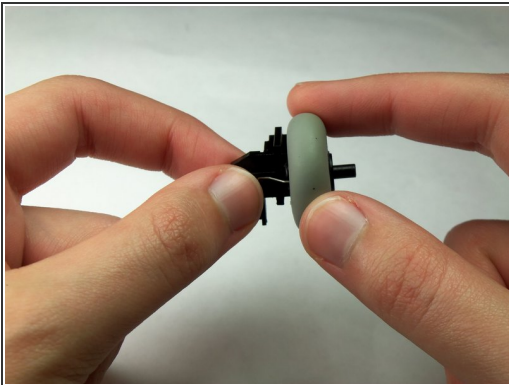
- Locate the spring on the scroll wheel, and carefully remove the spring.

Step 5 — Attaching the New Spring



- Place the replacement spring on the correct side of the wheel (shown in the images) with the prongs pointing down.

Step 6 — Wheel Mount



- Locate the black wheel mount.
- ⓘ Note: Make sure that the spring hidden in the mount does not fall out.
- Separate the wheel from its mount.

To reassemble your device, follow these instructions in reverse order.