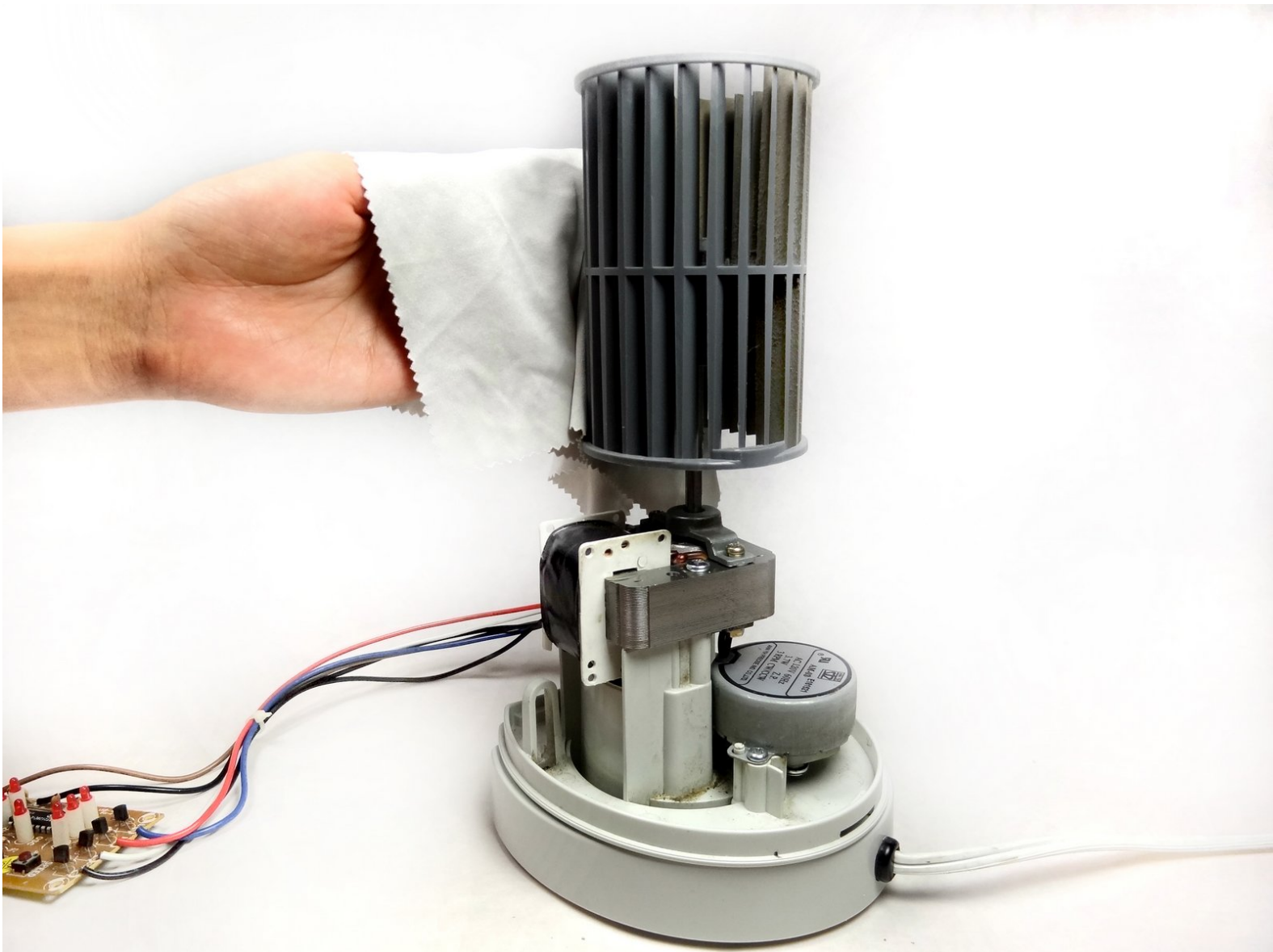




Removing the Tower Fan Rotating Blade and Transformer

This installation guide shows viewers how to install a new fan blade and a new transformer.

Written By: Mateo Begue



INTRODUCTION

This guide will instruct you on how to remove the fan blade and transformer.



TOOLS:

- [8" Needle Nose Plier](#) (1)
 - [Phillips #2 Screwdriver](#) (1)
-

Step 1 — Installing the PCB (Printing Circuit Board)



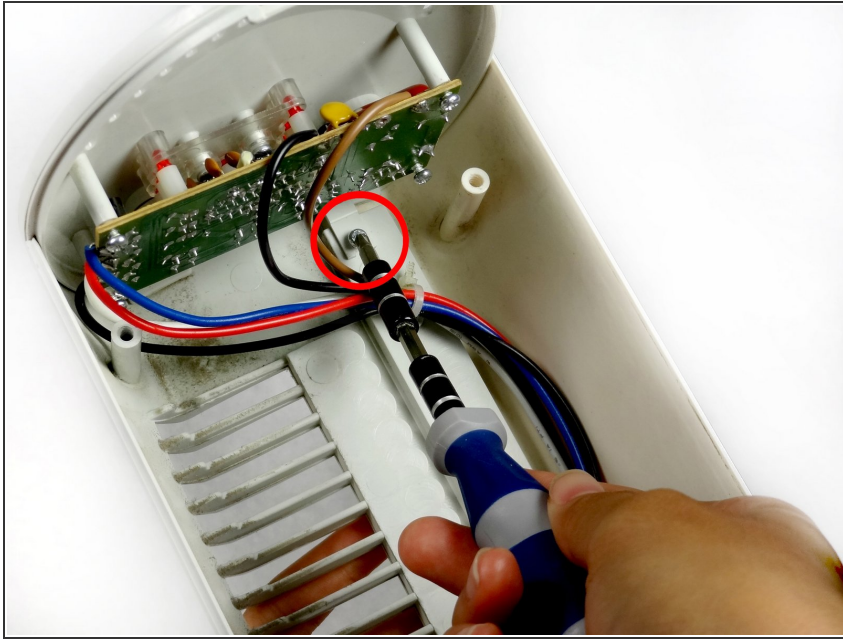
- Use a Philips #2 screwdriver to unscrew the four 6mm Phillips #0 back screws.
- ⓘ Do this by unscrewing from left-to-right then pull the screws out of the back of the fan

Step 2



- Pull the front and back cover apart.
- ⚠ Be careful not to pull the front cover off completely because it holds the wires.

Step 3



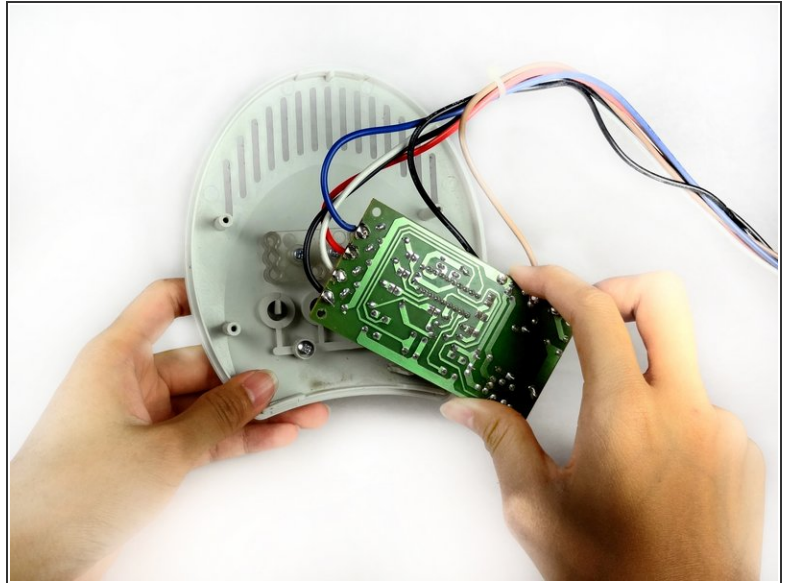
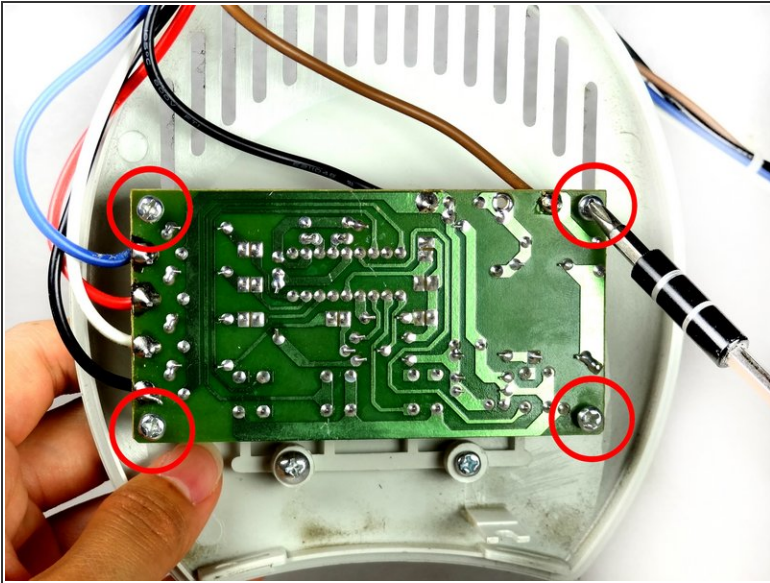
- Remove the Phillips (5-mm head) 6-mm screw that holds the circuit board to the outer shell of the fan.
- ⚠ Make sure the fan is unplugged while removing the circuit board as you may get shocked.

Step 4



- Remove the top cover containing the circuit board and the wires by pulling it away from the body of the fan.

Step 5



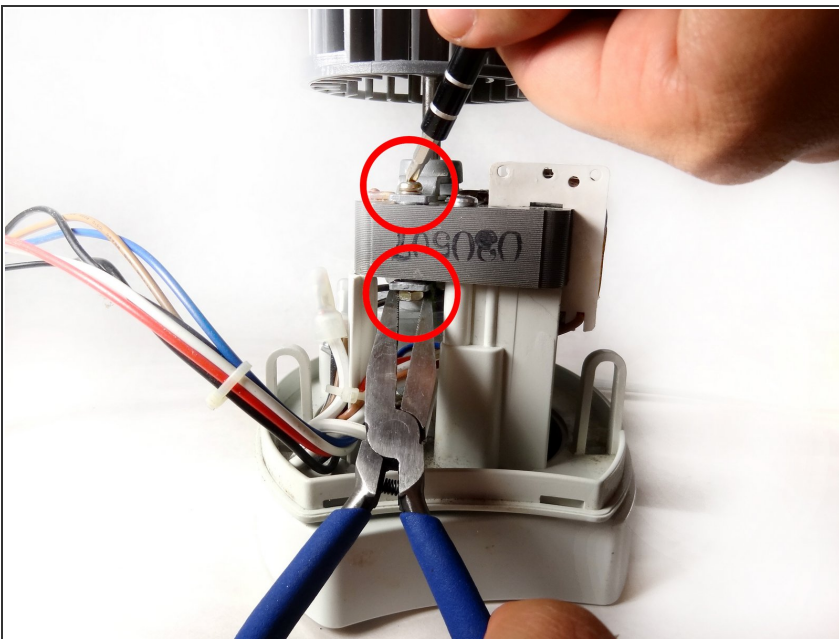
- Remove the circuit board from the top cover. Do not touch the other side of the circuit board as you may damage circuit elements.
- ⓘ Unscrew the four screws on the top of the circuit board in a left-to-right fashion. After pull screws out of the board.

Step 6 — Rotating Blade and Transformer



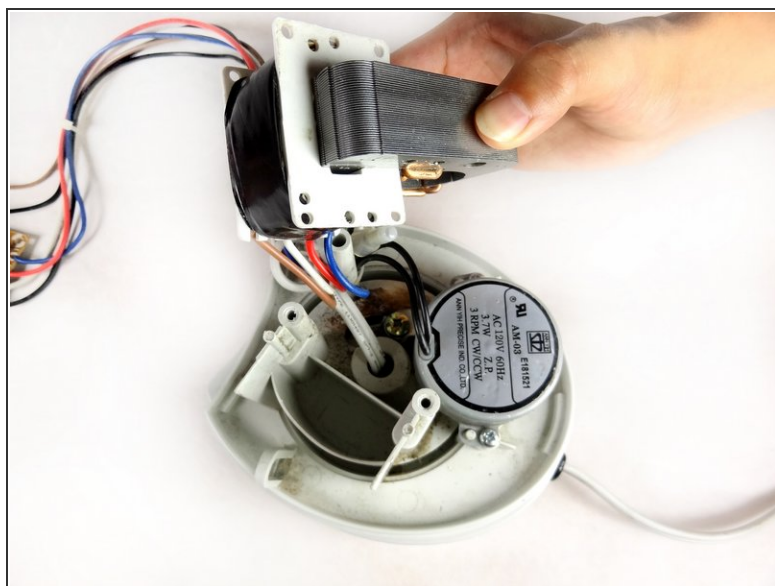
- In order to remove the fan blade pliers were used to remove the holding nut.
- After the holding nut is loose, use the pliers to pull up to remove the nut.

Step 7



- Remove the two bronze Phillips 29-mm bolts that hold the fan blade to the transformer.
- Use a pair of pliers to hold the nut at the bottom of the transformer, as you unscrew from left-to-right at the top of the transformer. After, pull up and remove both the screw and nut.

Step 8



- Next, remove the two silver Phillips (8-mm head) 40-mm screws from the transformer.
- ⓘ Remove screws by pulling them away from the base.
- The transformer should be free after this step.

To reassemble your device, follow these instructions in reverse order.