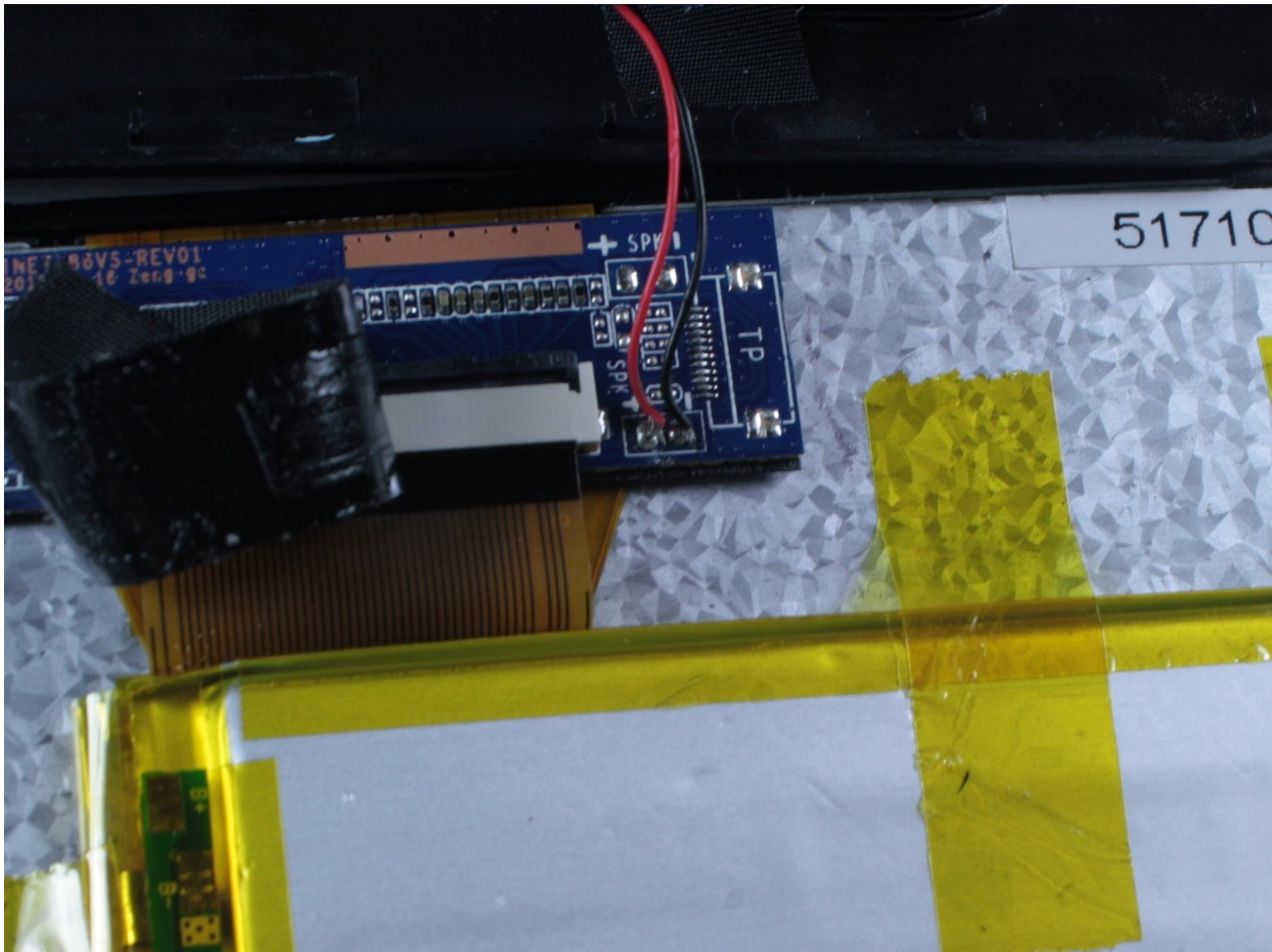




Repairing Apex Tablet 7 Internal Speaker Replacement

This guide will show you how to repair a speaker that has suffered damage to the wires that connect to the internal circuitry.

Written By: Corrine Nief



INTRODUCTION

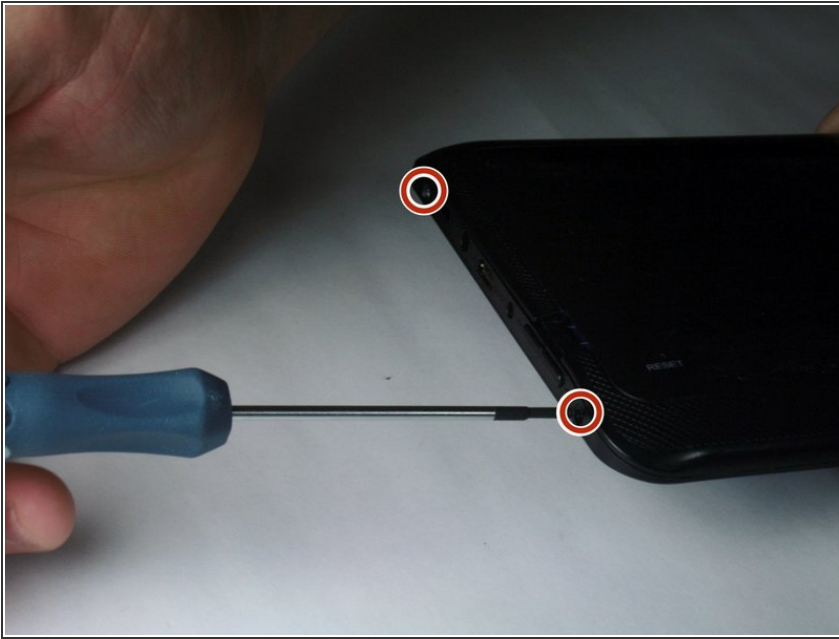
This guide demonstrates how to remove and replace the internal speaker, as well as reconnect any wires to the device from the speaker. This replacement addresses issues with audio from the device speaker and other audio malfunctions.



TOOLS:

- [Small Insulated Wire](#) (1)
 - [Soldering Iron](#) (1)
 - [iFixit Opening Tools](#) (1)
 - [Phillips #00 Screwdriver](#) (1)
-

Step 1 — Back Panel



- Unscrew the two 2.70 mm Phillips #00 screws on the side of the tablet that has the buttons and the headphone jack (bottom side when holding upright).

Step 2



⚠ CAUTION: When removing the back panel of the tablet, take caution around the speaker. This is located in the lower right corner when looking at the back of the tablet. There are two wires inside connecting the tablet back panel to the device itself and this connection may be severed if the back is pulled off without care.

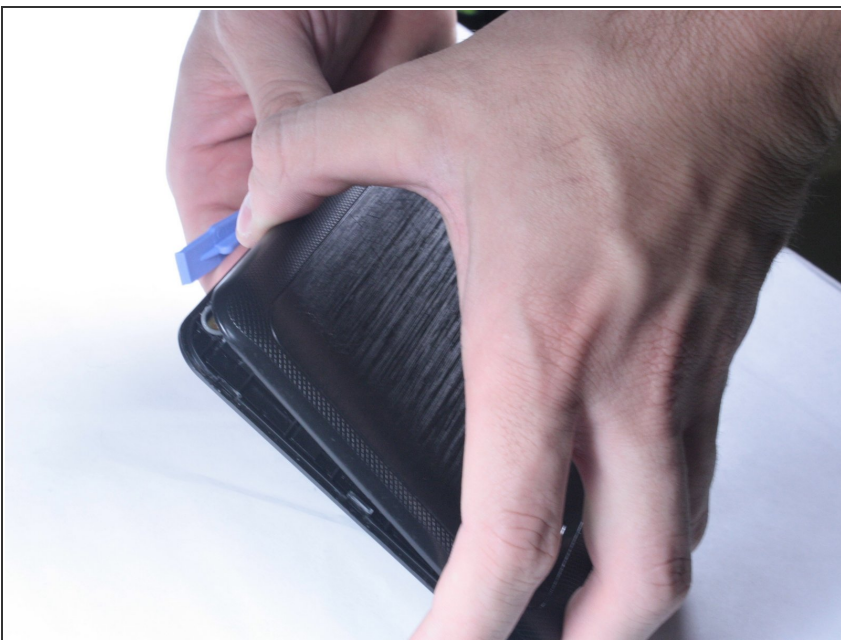
- This connection is shown in red on the pictures.

Step 3



- Slide a plastic opening tool in between the edge of the back panel and the the top edge of the device.
- Run the plastic opening tool along the sides of the tablet while keeping it in the crack between the tablet and the back panel to create an opening.

Step 4



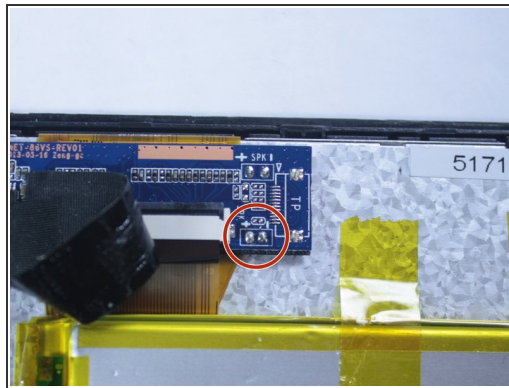
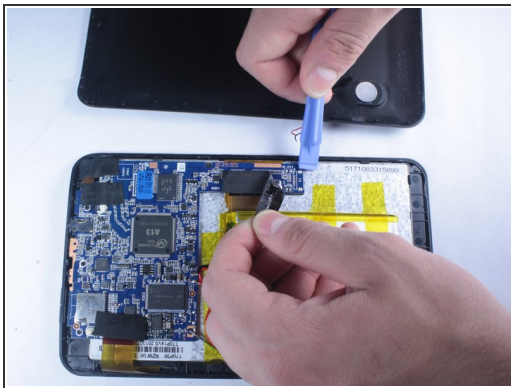
- Apply pressure using your hand to pop the back panel off slowly, taking extra care around the speaker connection.

Step 5



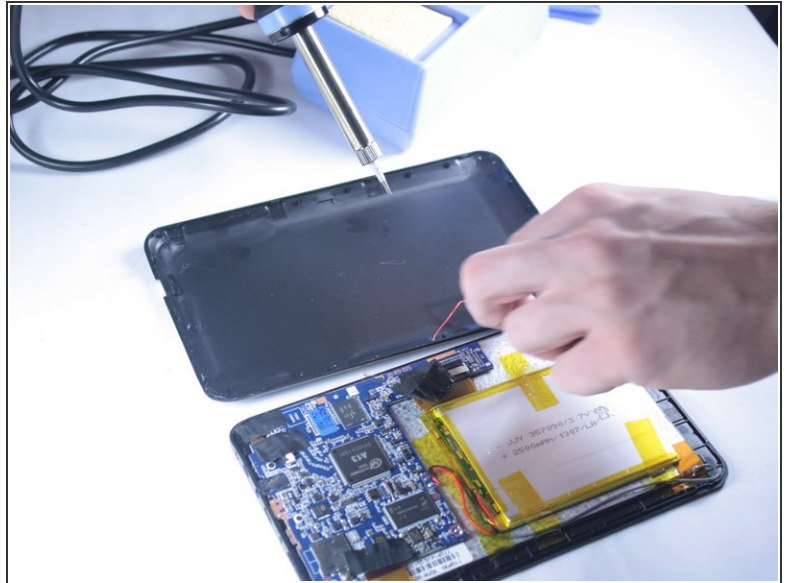
- The back panel should now be disconnected from the device. This provides access to the components of the device for repairing and replacing parts of the tablet.

Step 6 — Internal Speaker



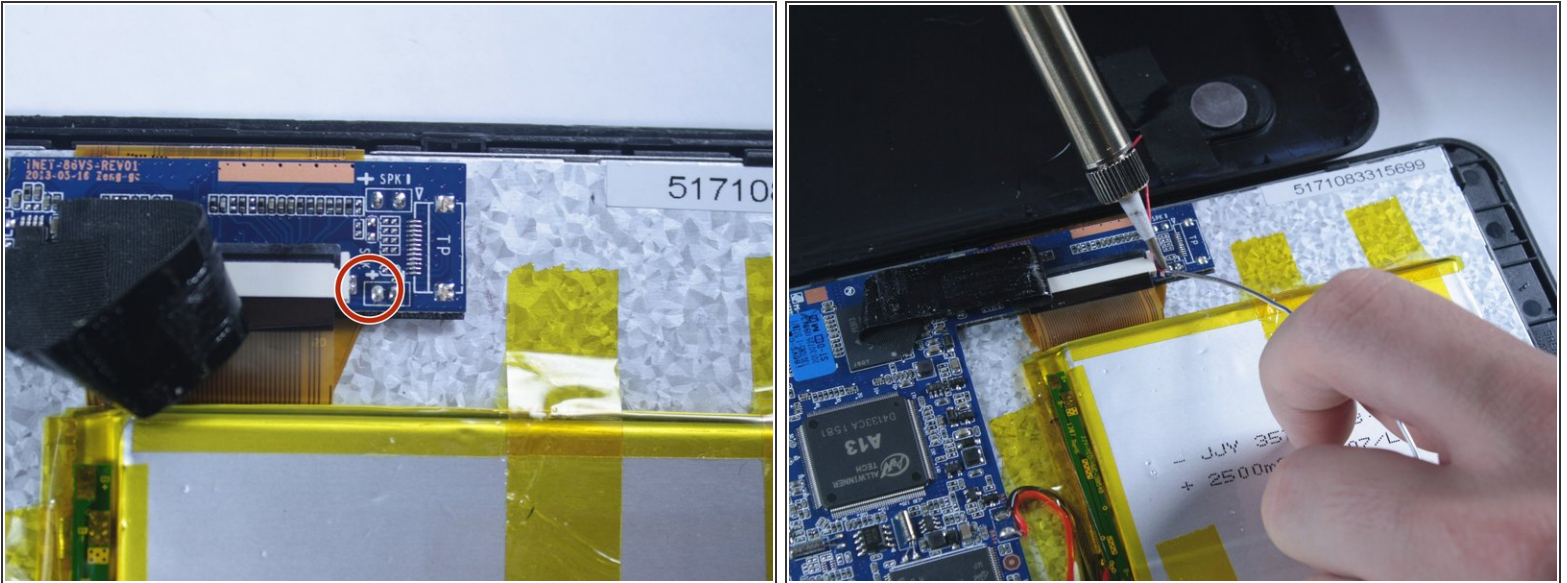
- If wires to the speaker have become severed or damaged they will need to be repaired. Locate any damage to these wires. (The connection to the circuit board is commonly broken by removing the back panel.)
- Locate the soldering points where the wires were originally connected.
- Plug in your soldering iron and wait for it to heat up.

Step 7



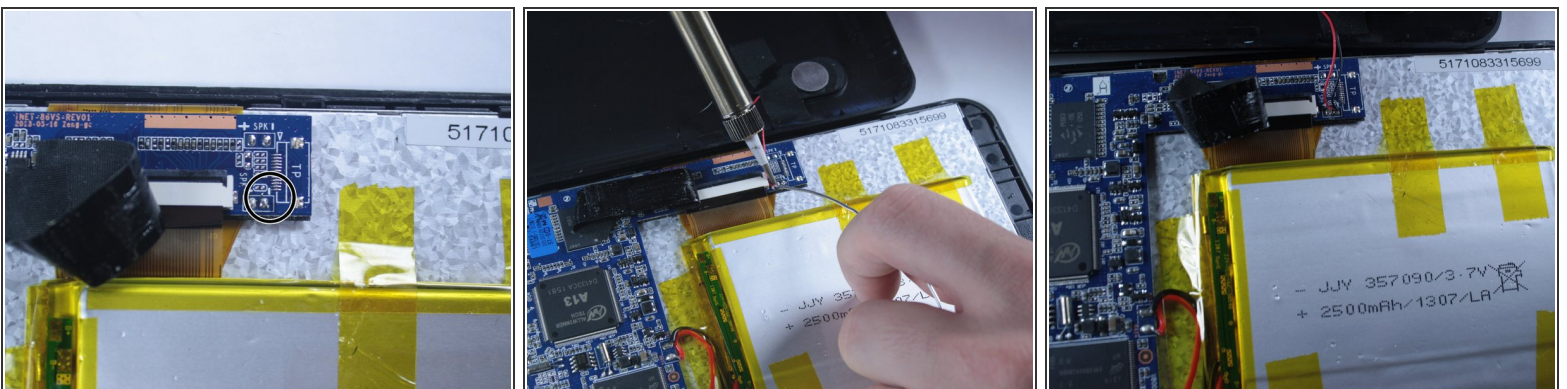
- Make sure the soldering iron is hot enough to melt solder, and prepare your soldering station.
 - You can make sure your iron is hot enough by touching the end of your roll of solder to the soldering iron tip.
 - Get a wet sponge or wet paper towel ready to wipe debris from the soldering iron tip.
 - If available, have a desoldering braid nearby to absorb excess solder blobs.

Step 8



- Solder the red wire to the location noted here.
- You may need to replace or shorten your wire in order to make this connection.
- If this wire is damaged or too short, a new wire will have to be soldered at the speaker and the circuit board.
- CAUTION: The soldering iron is hot and can melt/burn-out other components on the tablet. Avoid applying heat to any part of the tablet for extended amounts of time.

Step 9



- Following the same precautions as with the red wire, solder the black wire to the location noted here.

To reassemble your device, follow these instructions in reverse order.