



Repairing Bosch Dishwasher (SHU5315UC-06) Won't Fill (drain motor keeps running)

Use this guide to fix a Bosch Dishwasher SHU5315UC-06 that won't fill due to draining or a frozen timer.

Written By: vincentjoly



INTRODUCTION

Common issue with wide range of Bosch DWs. May or may not be associated with water in the base. Symptoms: at the end of a cycle when the CL sign will show, the drain motor will keep running and the same upon turning it on (drain running + frozen timer).

TOOLS:

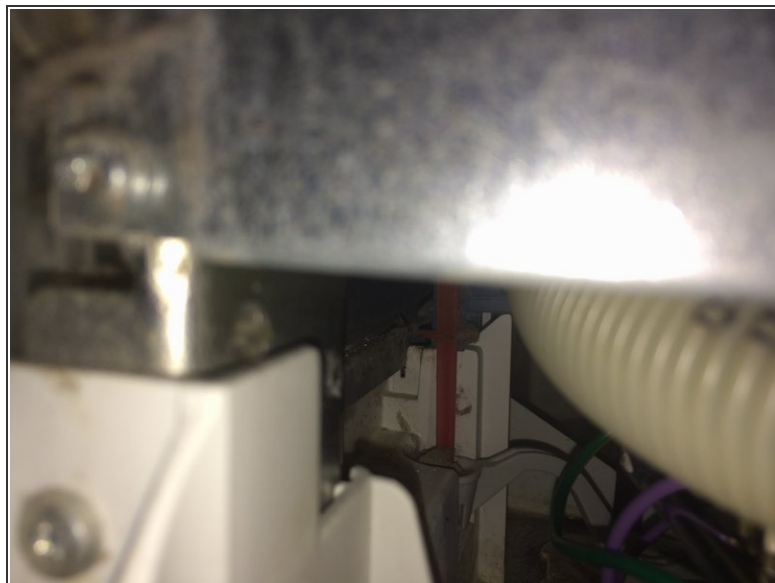
- [T6 Torx Screwdriver](#) (1)
 - [Paper Towels or rag](#) (1)
-

Step 1 — Repairing Bosch Dishwasher (SHU5315UC-06) Won't Fill (drain motor keeps running)



- Remove the two Torx screws to release the lower access panel and set it aside.
- Verify if there is water in the base and remove as much as you can with a rag (as pictured).
- It is normal to see a small amount of water in there but if there is a large amount, this may be what is causing the float to remain up and you may have a different issue.

Step 2



- Use a screwdriver to lift the float switch activator (red stick). It has tabs which makes the task easy (although they are difficult to see in the picture).
- Be careful not to shortcut the wires of the inlet valve with your screwdriver (it might be wise to turn off the electricity before this procedure).

Step 3



- Turn your dishwasher back on.
- This may not fix it permanently, but the same procedure will work again and again.
- If someone a permanent fix please share! I suspect a defective float switch (Bosch part #165256) but thee fact that my DW works for a couple of cycle before the issue coming back makes me a little skeptical.
- On this dishwasher you should check on the right side for a leaking wash motor pump assembly

To reassemble your device, simply put the panel back in place.