



# Repairing Casio Exilim EX-Z850 Speaker Replacement

Replace Casio Speaker

Written By: Christian



---

# INTRODUCTION

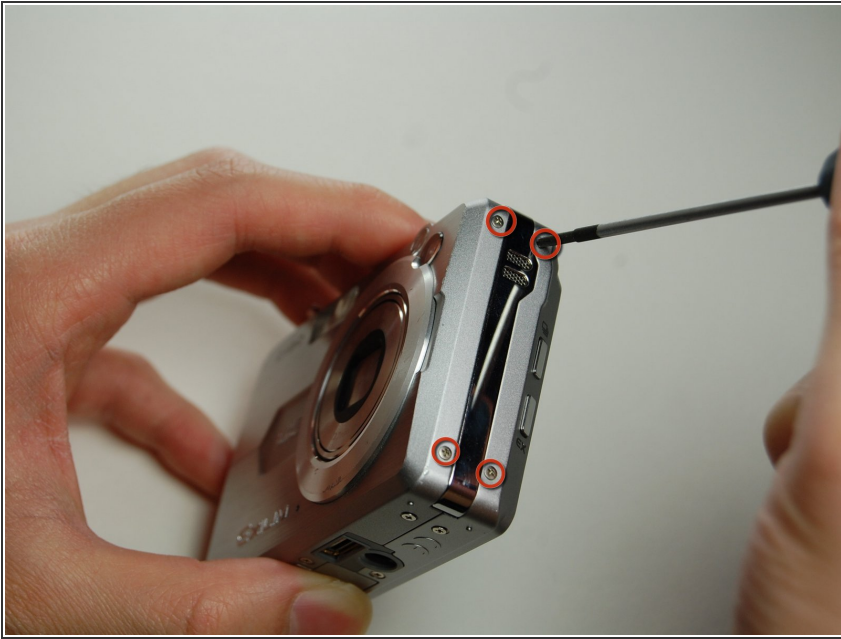
This guide will show how to replace the speaker on the Casio camera



## TOOLS:

- [Phillips #00 Screwdriver](#) (1)
  - [Tweezers](#) (1)
-

## Step 1 — Speaker



- Remove the four screws on the side with the speaker

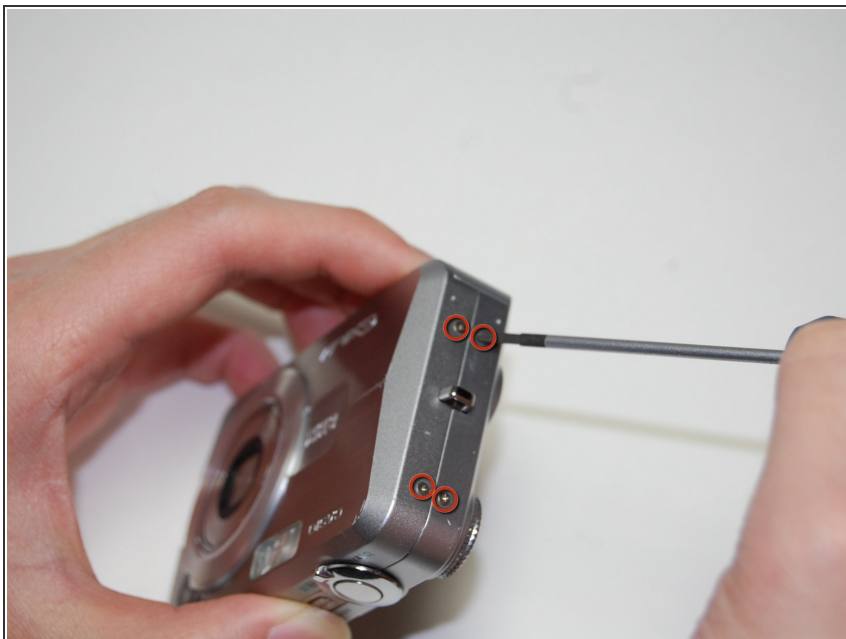
## Step 2



- Remove the four screws from the bottom of the camera.

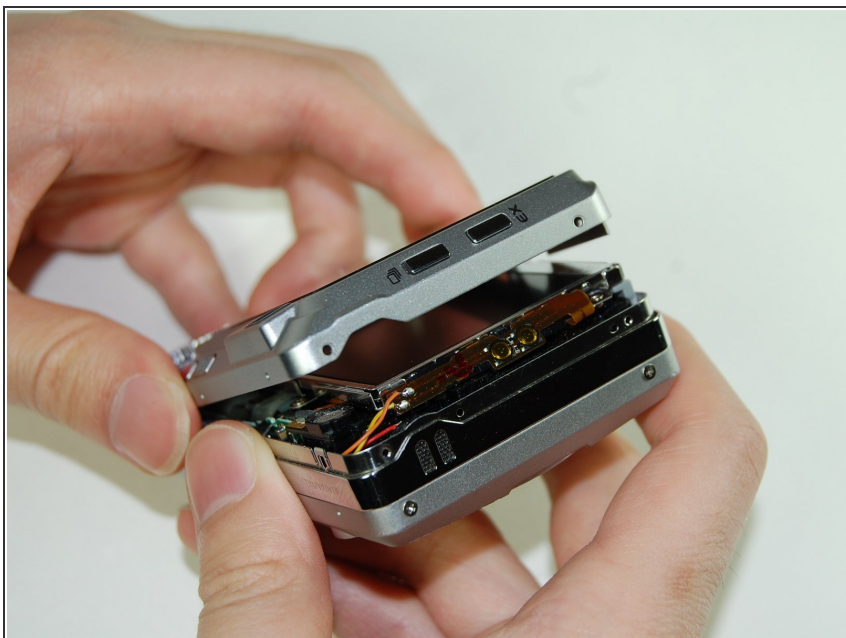
⚠ Note: Bottom screws are longer than the top ones, so label accordingly for easy reassembly

### Step 3



- Remove the four screws on the side opposite of the speaker.

### Step 4



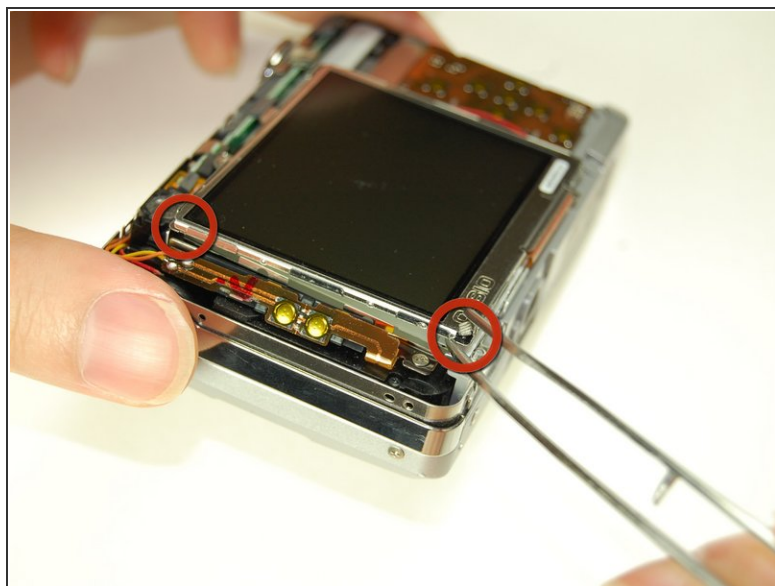
- Pull apart the bottom casing.

## Step 5



- Remove ribbon from the rear casing.
- Set aside rear casing.

## Step 6

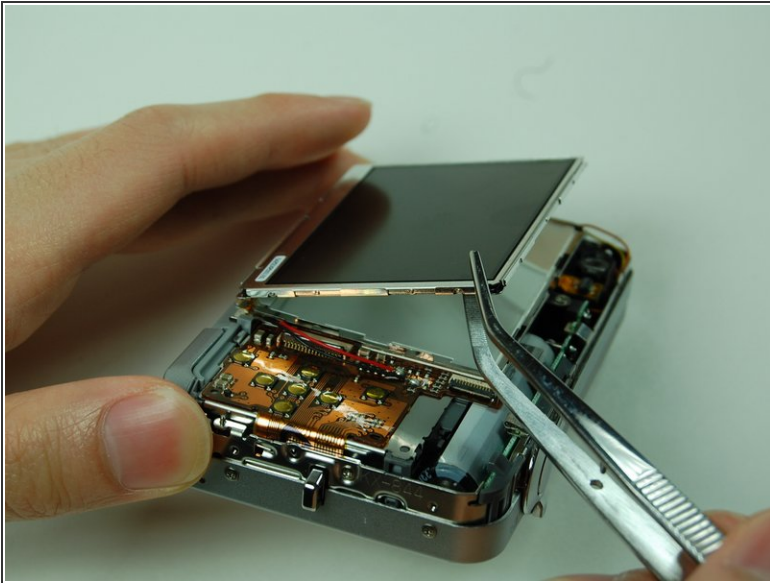


- Use tweezers or prongs to pry the LCD screen off from the opening.



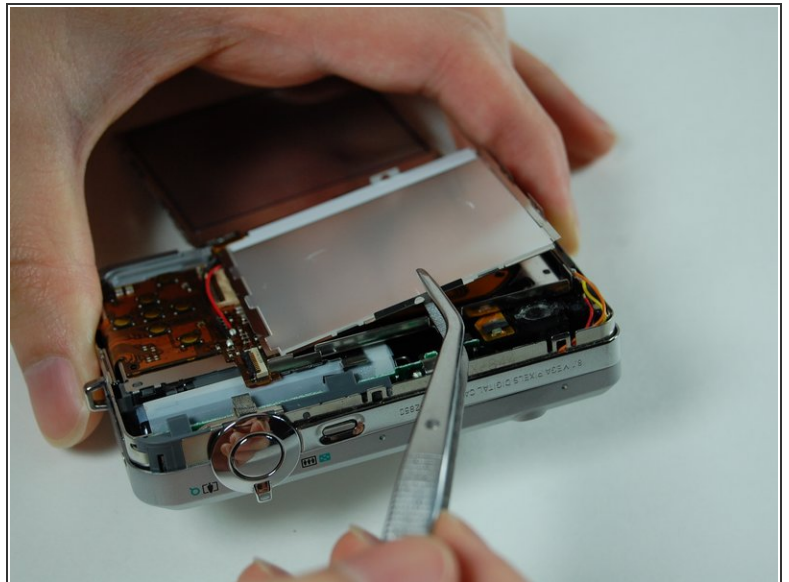
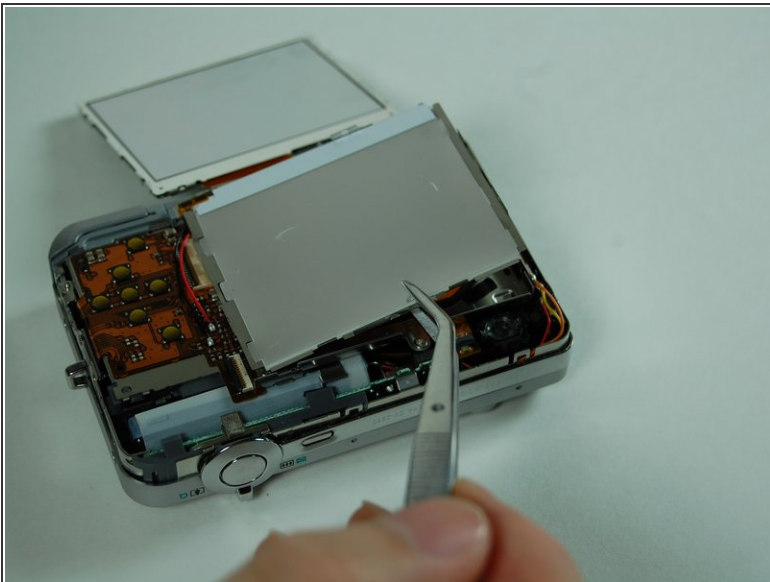
**Note:** The bottom of the LCD screen is attached to the frame by a few pieces of black tape.

## Step 7



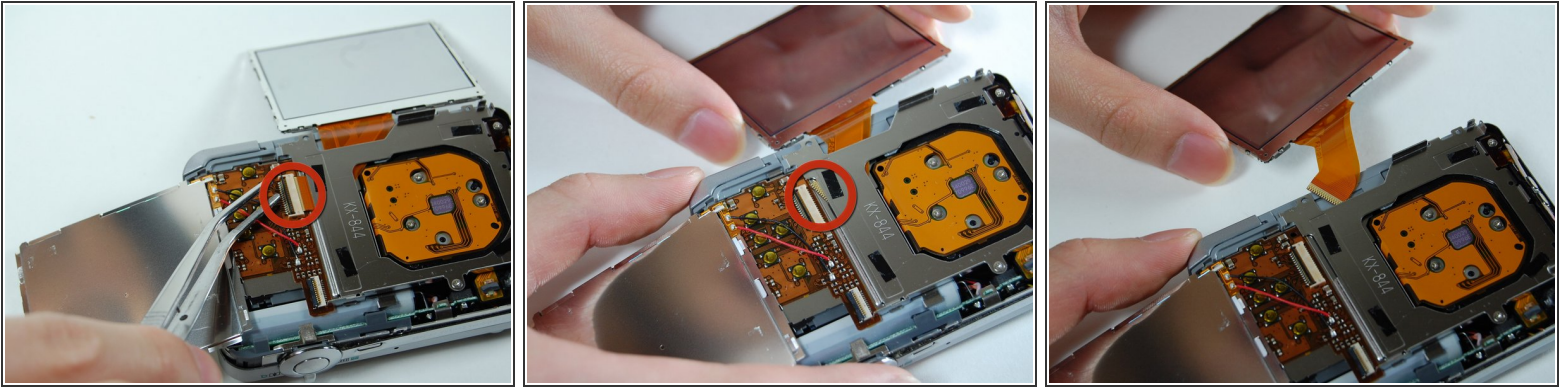
- Lift up the LCD screen, slowly move it to the other side.

## Step 8



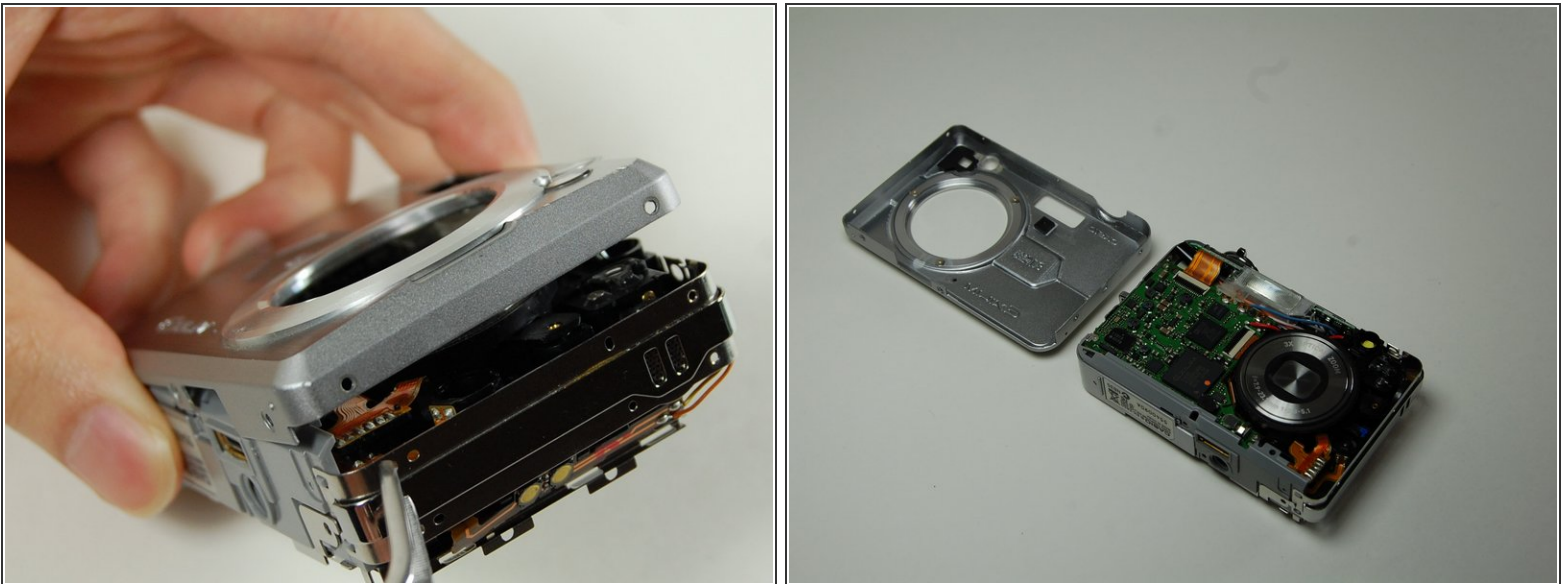
- Pry off the LCD casing which is taped on to the frame.

## Step 9



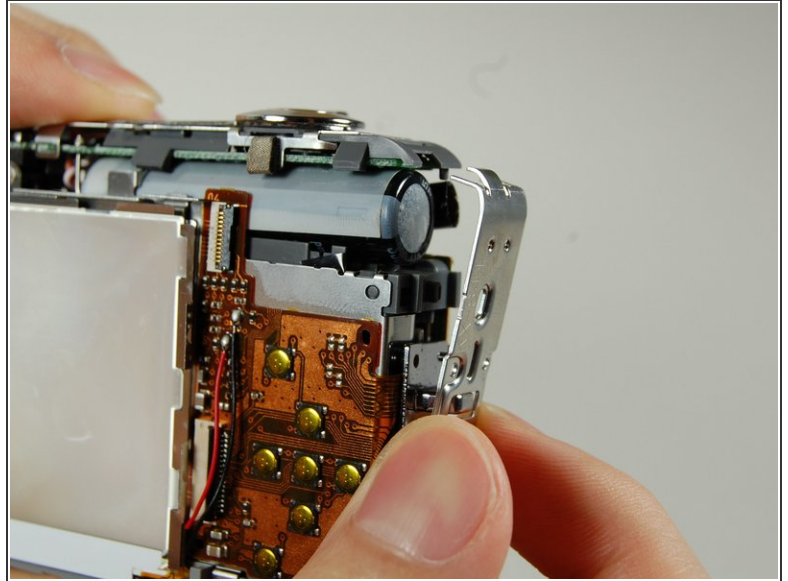
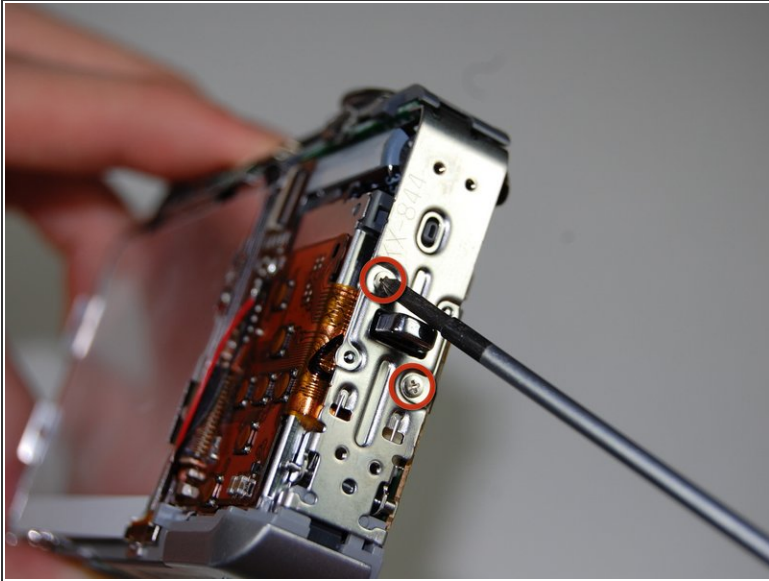
- Flip open the connector holding the ribbon.
- Pull out the LCD screen with the ribbon from the camera.

## Step 10



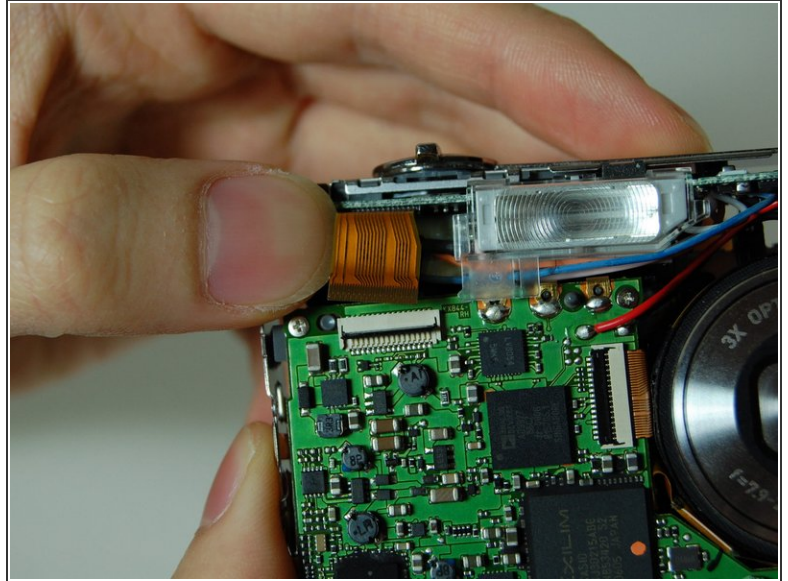
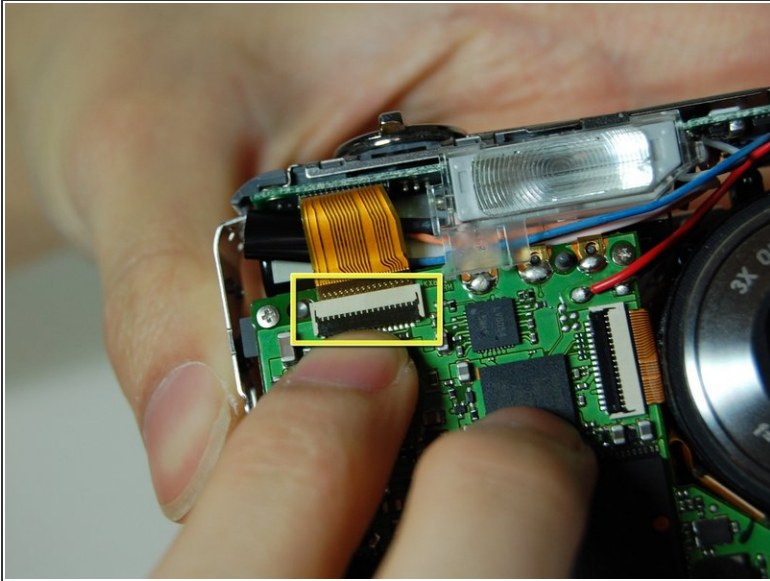
- Pull apart the front casing.

## Step 11



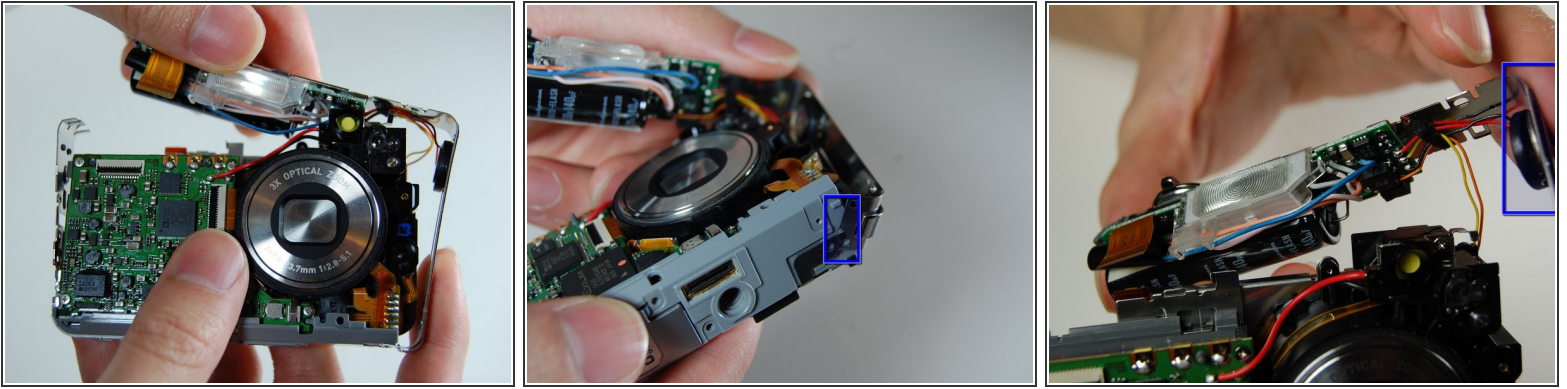
- Remove two screws on the side where the battery is located.
- Remove the lanyard loop after the screws come off.
- Slowly pull the side casing so it becomes dislocated from the top of the camera frame.

## Step 12



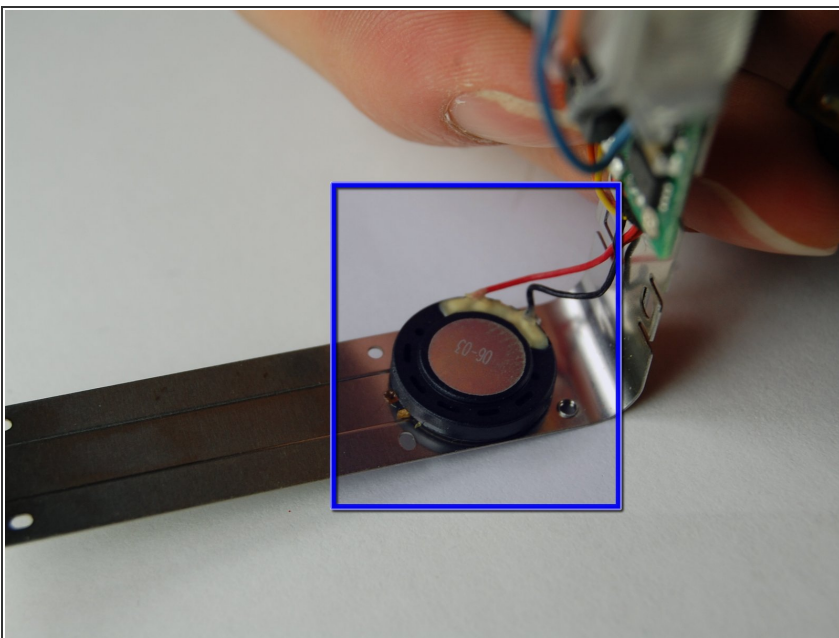
- On the front of the camera near the flash flip the connector holding the ribbon.
- Remove the ribbon from the connector.

## Step 13



- Carefully remove the L shaped frame from the camera
- At the bottom of the camera the L shaped frame is being held in by two plastic bumps and a metal tab.
- Pop the frame off the bumps and tabs.
- Note: There is a yellow and orange wire soldered onto the camera. Be careful not to pull them off.
- The blue box is the speaker

## Step 14



- Remove the speaker with tweezers

To reassemble your device, follow these instructions in reverse order.