



# Repairing Cup Holder for 2008 328i BMW

This guide will show you how to fix your broken cup holder if it does not open.

Written By: Michael Tapia



---

## INTRODUCTION

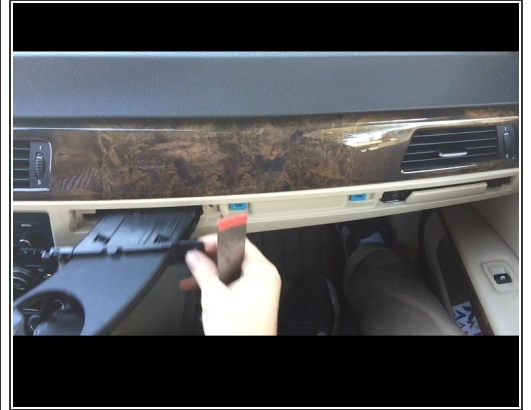
If you have a cup holder but it wont open then this guide will take you through the steps you need to do to fix this problem.

---

### TOOLS:

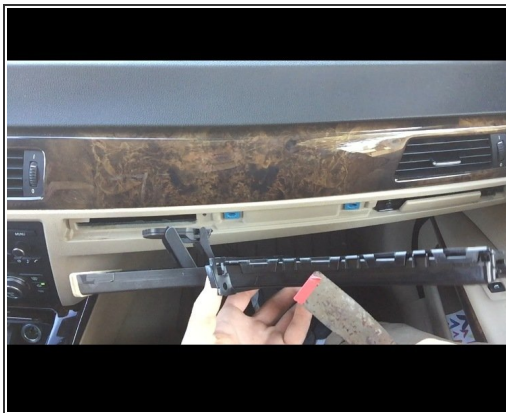
- [Phillips #1 Screwdriver](#) (1)
  - [Power Drill](#) (1)
  - [Puddy Knife](#) (1)
-

## Step 1 — Repairing Cup Holder for 2008 328i BMW



- Apply putty knife to edge of cover until it pops open
- Remove screws off of broken cup holder
- Take cup holder out

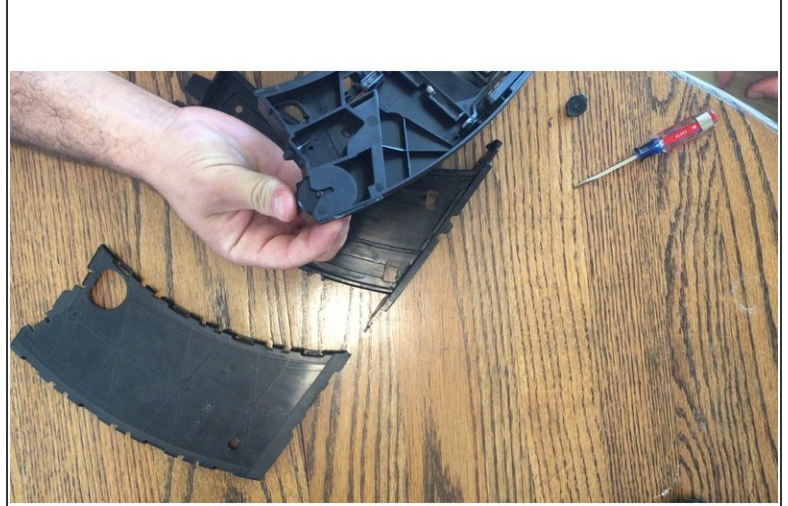
## Step 2



- Remove plastic cover on cup holder by pulling apart where the lips meet
- Locate spring in device

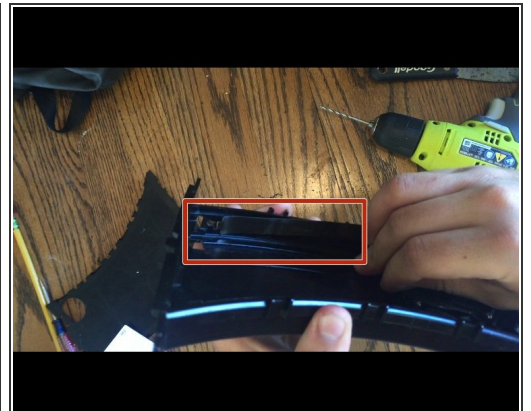
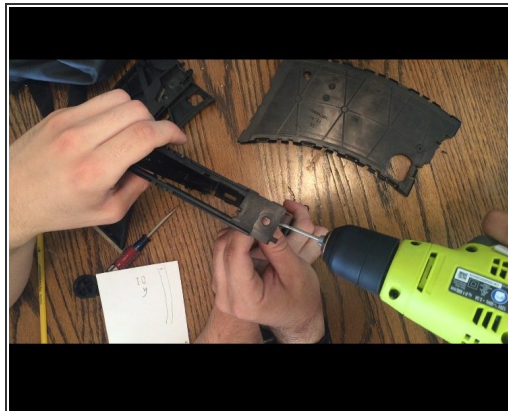
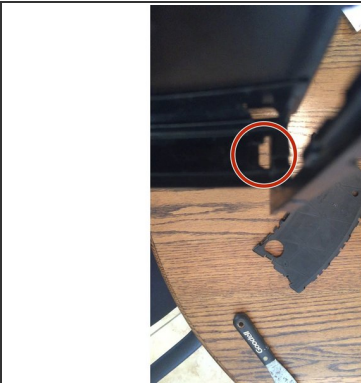


### Step 3



- Fully take apart the cup holder to get to the inside of the cup holder
- Locate where spring is placed

### Step 4



- Locate where the spring connects
- If hole is not broken then just apply spring into hole
- If the hole broke, like in this case here, then drill a hole the size of the spring around the same spot of the other hole



**Caution:** Be careful drilling the hole, the plastic is slippery when in contact with drill bit

This document was generated on 2019-09-18 10:59:49 AM (MST).

## Step 5



- Test to make sure spring is properly working
- Reassemble the cup holder

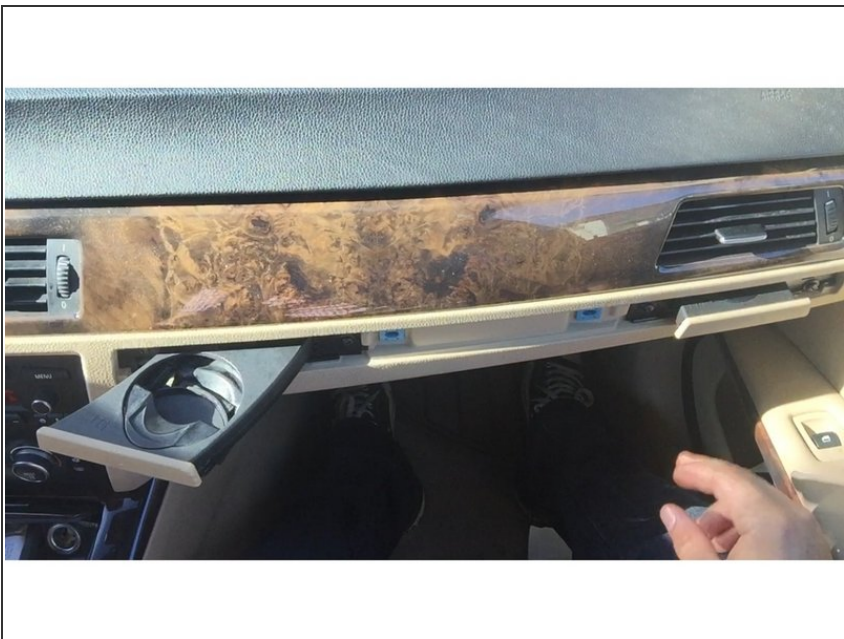
## Step 6



- Put cup holder back in place
- Screw in screws



## Step 7



- Check to make sure cup holder works
- Start to put on cover by lining up holes

## Step 8



- Press firmly on cover all around until it is fully on

## Step 9



- Enjoy your fixed cup holder!

Follow these steps step by step to get your broken cup holder fixed.