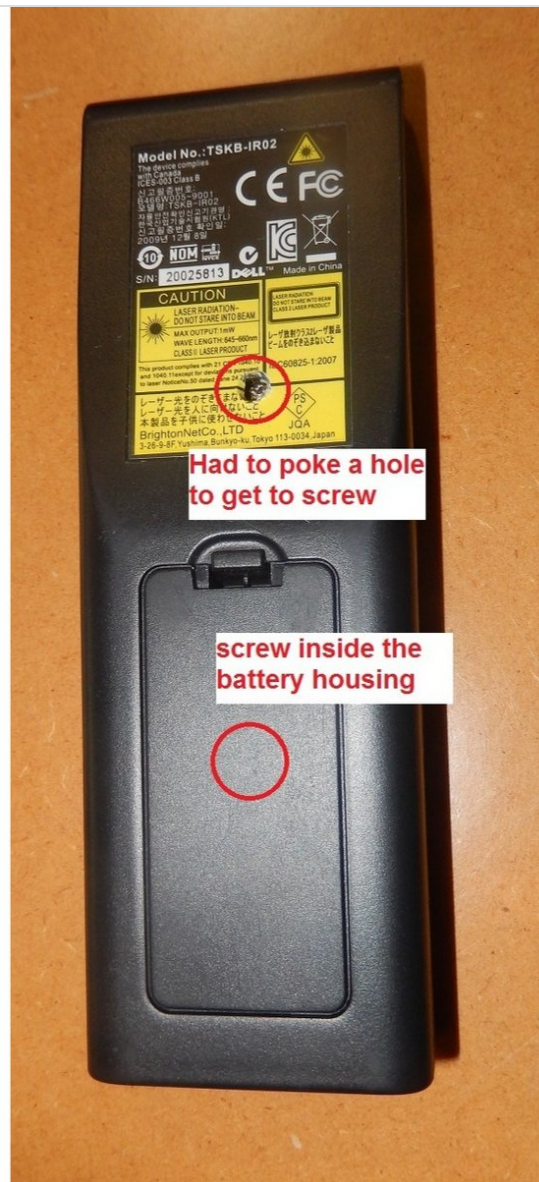




Repairing Dell Projector 4220 Remote Controller Fix Rubber Power Button

Apparently, there is conductive paint on each button that allows a button press to send signal. After many uses of the power button, it became more and more difficult to work it. I researched a couple ways to fix this and ultimately did a cheapo hack.

Written By: yieunjae



INTRODUCTION

Apparently, there is conductive paint on each button that allows a button press to send signal. After many uses of the power button, it became more and more difficult to work it. I researched a couple ways to fix this and ultimately did a cheapo hack.



TOOLS:

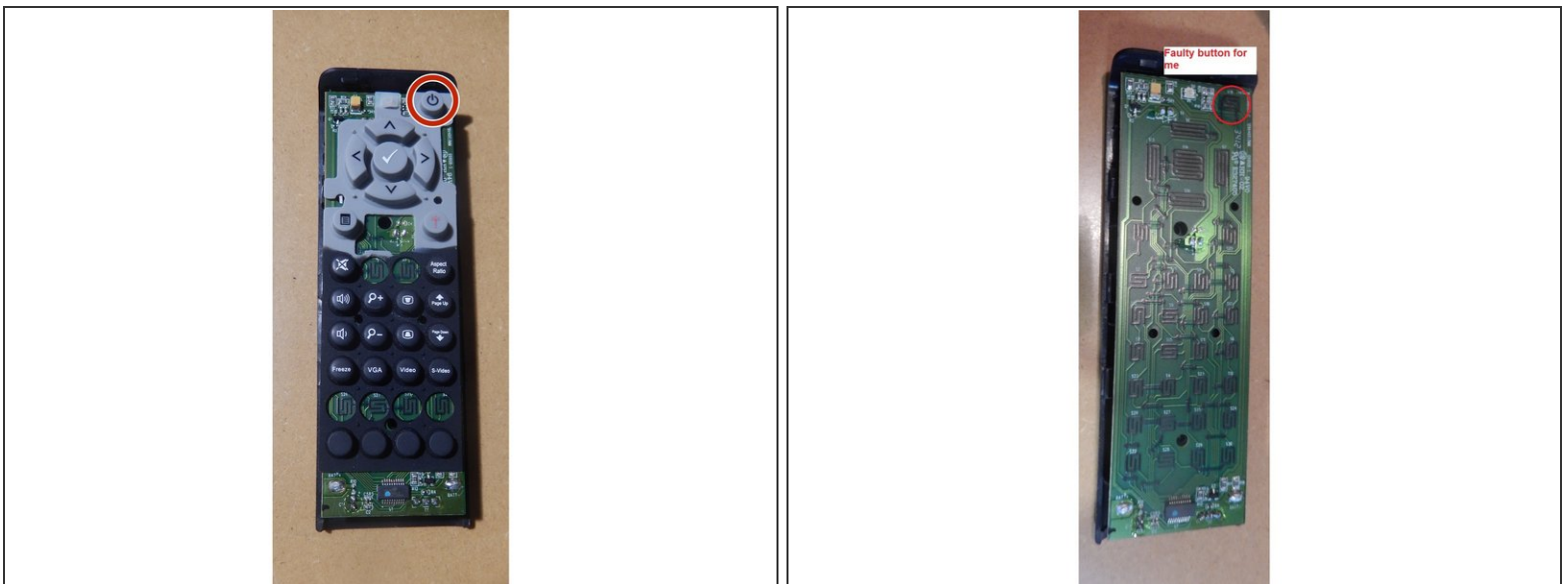
- [Small Screwdriver](#) (1)
 - [Pencil](#) (1)
 - [Paper](#) (1)
 - [iFixit Opening Tools](#) (1)
 - [Plastic Cards](#) (1)
-

Step 1 — Locating Screws and removing them



- There are two screws on this remote controller. One behind the yellow sticker. One in the battery housing.

Step 2 — Pry open controller



- Using a spudger to ease the two pieces apart will help you get started. Pulling will most likely cause a break in the snap-in pieces.

Step 3 — Apply conductive paint/pencil



- Draw a thick layer of graphite onto a piece of paper.
- Rub the piece of paper onto the membrane. Test the button for conductivity.

To reassemble your device, follow these instructions in reverse order.