



Repairing Electrolux ZUA3840 Remote Control Handle Buttons

The remote on/off button is not sensitive after few years of use, I swapped it with the decrease power button (still sensitive as seldom used). You can replace with a new micro button if available.

Written By: Ken Yeung



INTRODUCTION

The remote on/off button is not sensitive after few years of use, I swapped it with the decrease power button (still sensitive as seldom used). You can replace with a new micro button if available.



TOOLS:

- [Phillips #2 Screwdriver](#) (1)
 - [Soldering Iron](#) (1)
-

Step 1 — Repairing Electrolux ZUA3840 Remote Control Handle Buttons



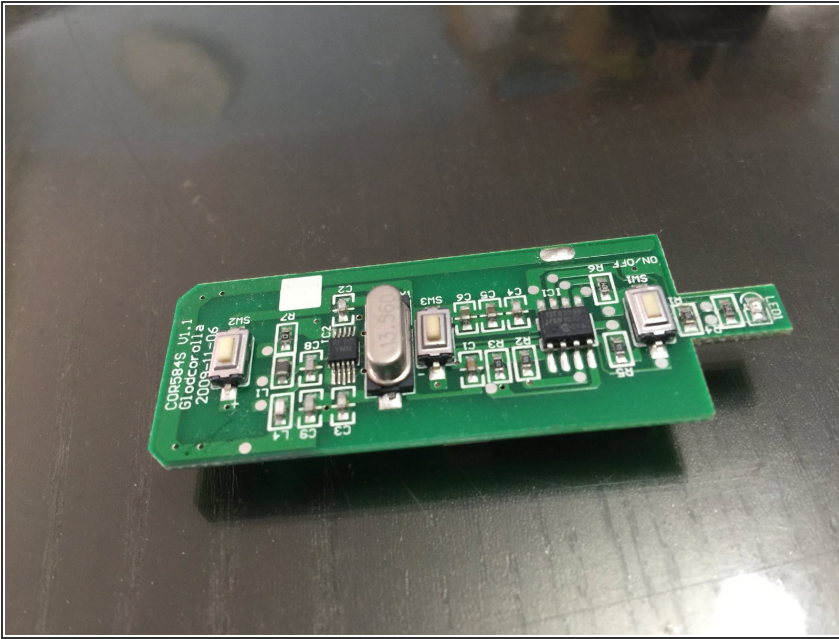
- This is the Electrolux ZUA3840

Step 2 — Open the remote handle button panel



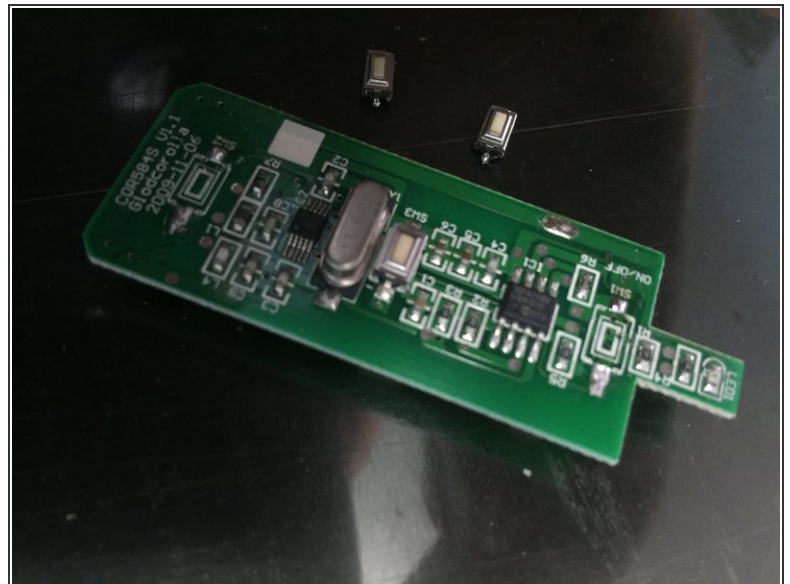
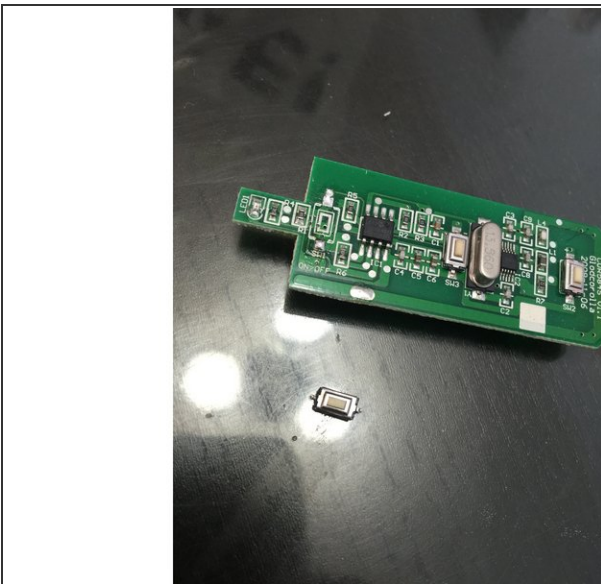
- Just open using a screw driver the same way when you replace the battery

Step 3 — Locate the on/off button



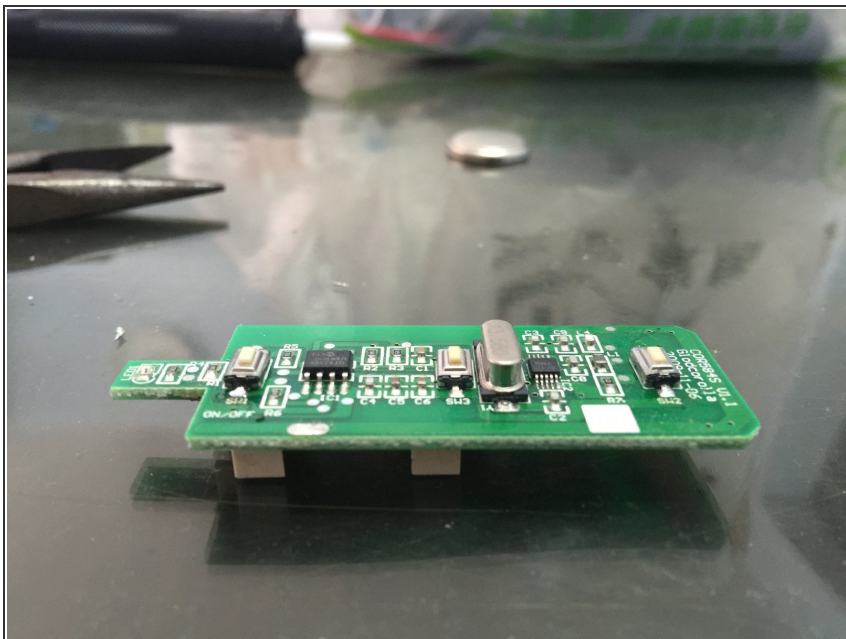
- Turn over the button panel, take the circuit board out and the on/off button is the right of the image, you can feel it is not sensitive.

Step 4 — Solder out the on/off micro switch and another micro switch



- Because I don't have a new micro switch so I plan to swap it with the reduce power one.

Step 5 — Swap and Test



- Solder back the micro switches, insert the battery and test it **BEFORE** you put it back to the button panel.

To reassemble your device, follow these instructions in reverse order.