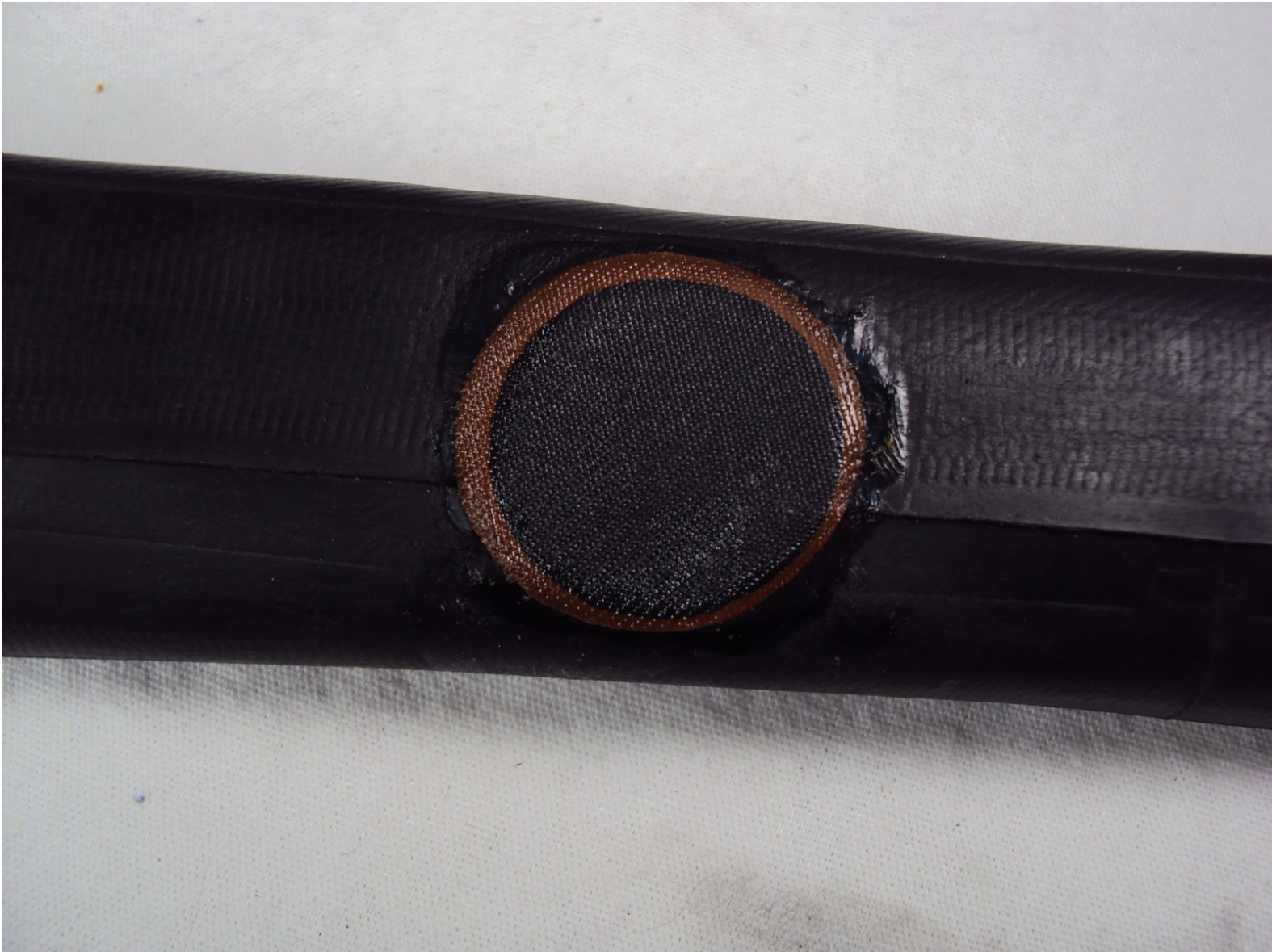




Repairing GEN 2 Wheelchair Patching a Tire Tube

This guide will show how to remove a inner tire tube, identify a hole, and then patch it.

Written By: Kali Slaughter



INTRODUCTION

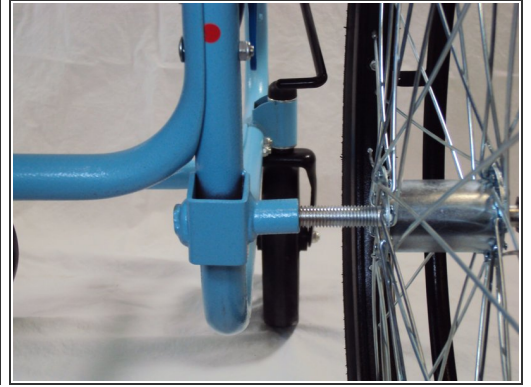
Use this guide to patch a tire. This process may be a little difficult the first time it is attempted.



TOOLS:

- [Socket 19mm](#) (1)
 - [Bicycle Tire Patch Kit](#) (1)
-

Step 1 — Repairing GEN 2 Wheelchair Patching a Tire Tube



- Unscrew the axle nut with a 19 mm wrench.
- Unscrew the the axle bolt with a 19 mm socket wrench.
- Remove the wheel from the wheelchair.

Step 2



- Insert the 19 mm socket wrench between the rubber tire and the metal frame.
- ⓘ Any rigid flat metal object can be used for this step.
- Carefully slide the 19 mm socket wrench all the way around the tire. Bend the wrench down to pop the tire out of the bead of the rim.
- ⚠ When undoing the tire, be careful using the back of the wrench because the tool can damage the tire tube and or wheel frame.
- Reach inside the tire and remove the tube from the metal frame.

Step 3



- Take the inner tube from inside the tire and submerge the tube in water.
- Squeeze the tube gently looking for bubbles from the tube in the water.
- ❗ You can use where the bubbles are forming to locate the hole in the tube.

Step 4



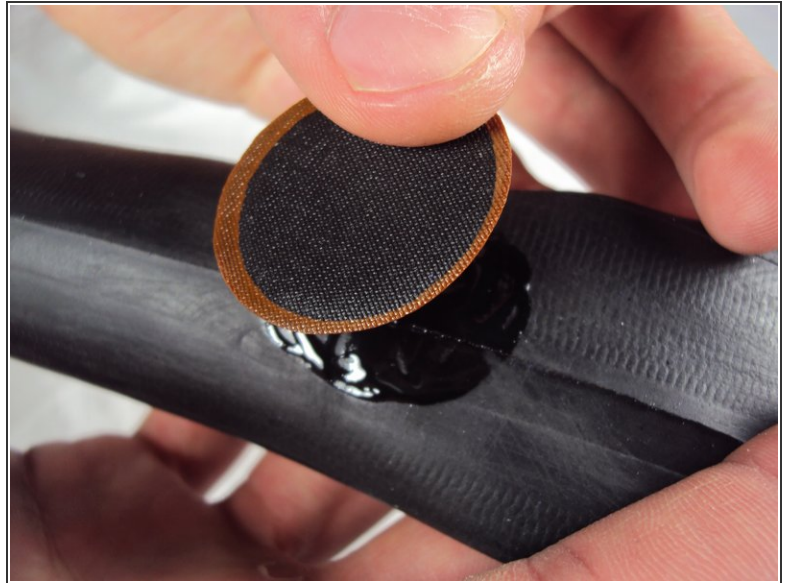
- Dry off the tube.
- Pull the tube out of the water and mark the location of the hole on the tube so that it can be found again.

Step 5



- Use sand paper to texturize the tire tube.
- Wipe off any excess rubber that was sanded off the tube.

Step 6



- Apply a thin layer of rubber cement over the area that was marked.
- ⓘ The layer should be slightly bigger than the size of the hole.
- Let the rubber cement set for 5 minutes.
- Peel the patch off of the plastic backing.
- Place patch over the area with the rubber cement and firmly press down until the patch is securely attached.

Step 7



- i Feel along the tire to check for and remove any objects stuck in the tire before replacing the tube.
- ★ Line up the air valve on the newly patched (partially deflated) tube with the hole on the metal frame before trying to insert the tube.
- Working all around the tire, carefully push the tube back into place inside the tire.

Step 8



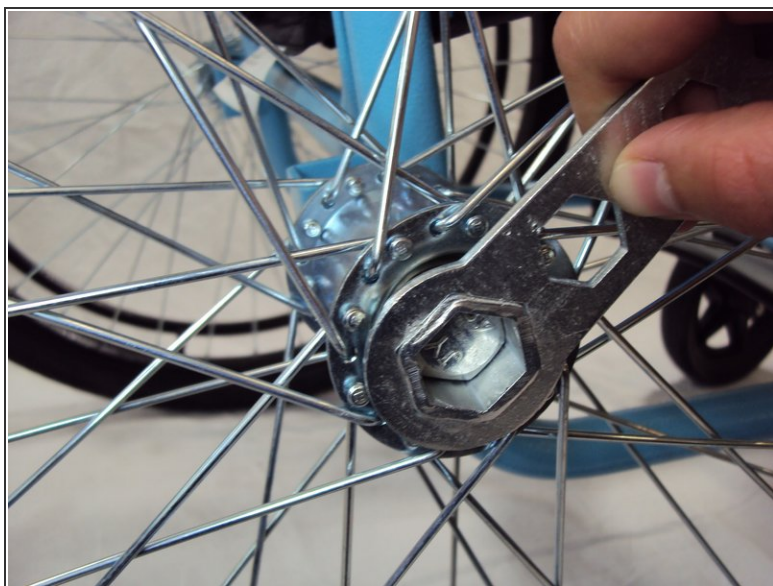
- Inflate the tire to 50 psi. If there is no gauge, inflate the tire until the tire is hard.

Step 9



- Insert the axle bolt into the center of the rear wheel.
- Insert the wheel with the axle bolt into the lower back of the frame by screwing in the bolt.

Step 10



- Secure the nut on the opposite side of the axle bolt and wheel. Tighten with 1/2 in or 19 mm wrench.