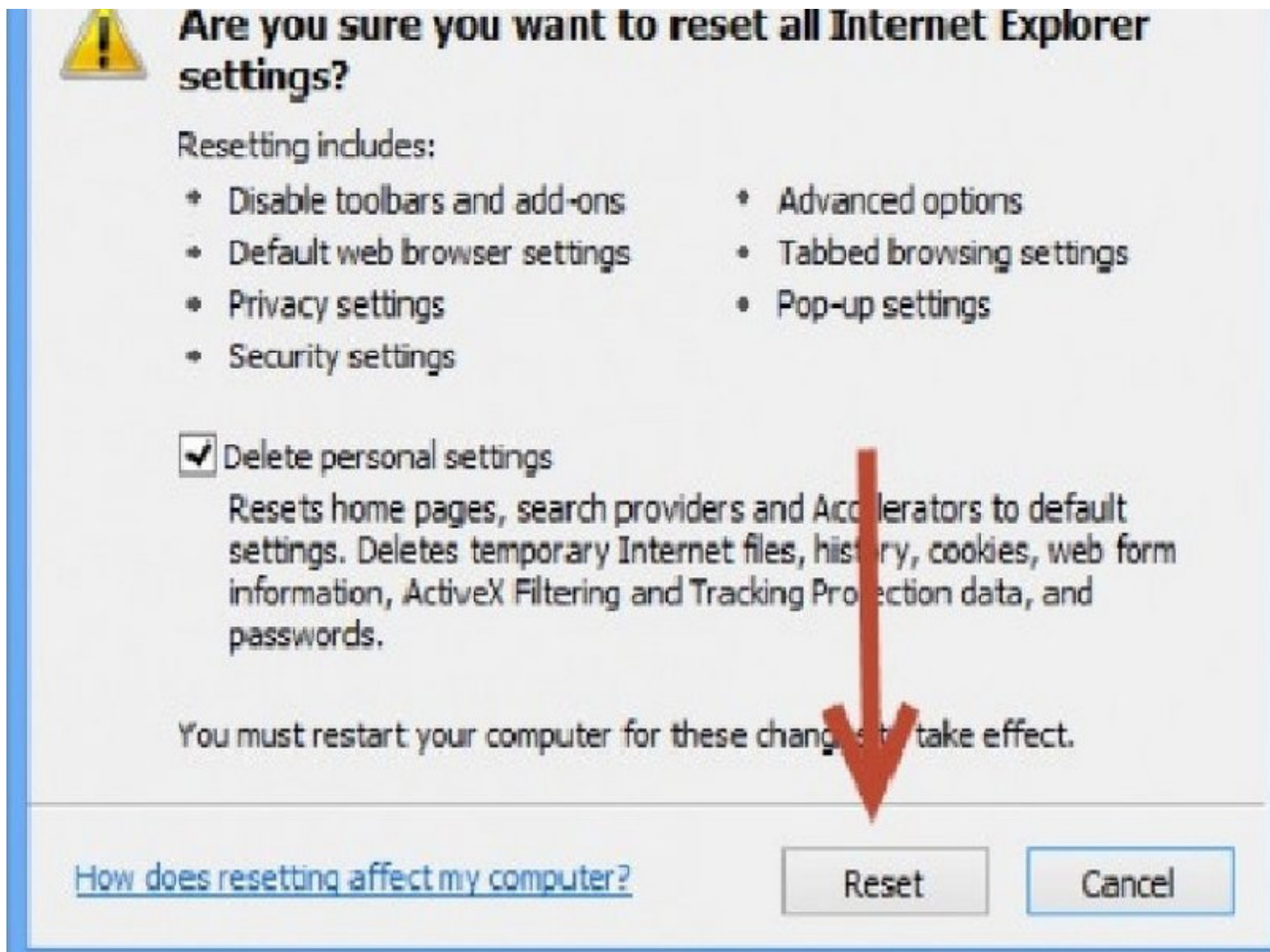




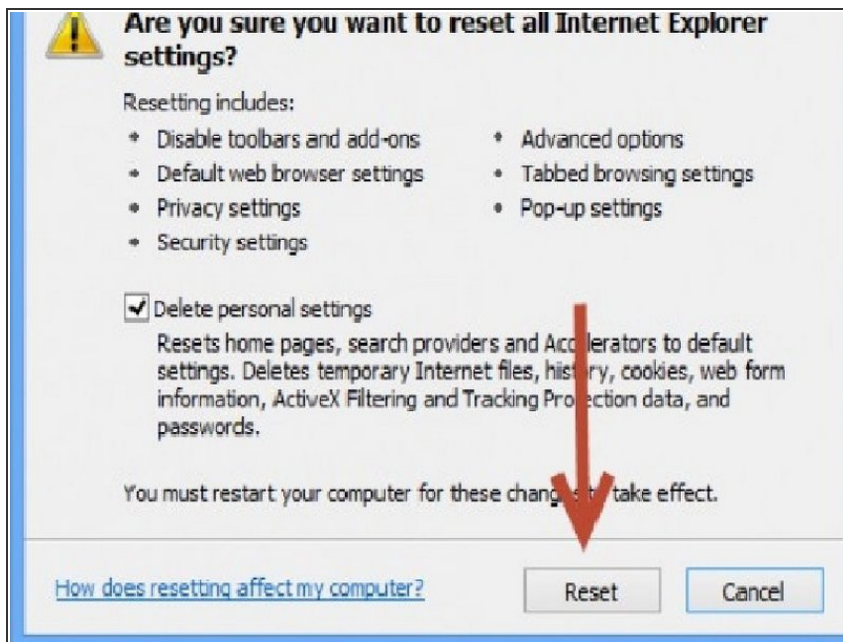
# Repairing Internet Explorer Crashes

Microsoft Internet Explorer freezes a lot and crashes frequently. This problem may occur on random basis.

Written By: VikasMedhekar

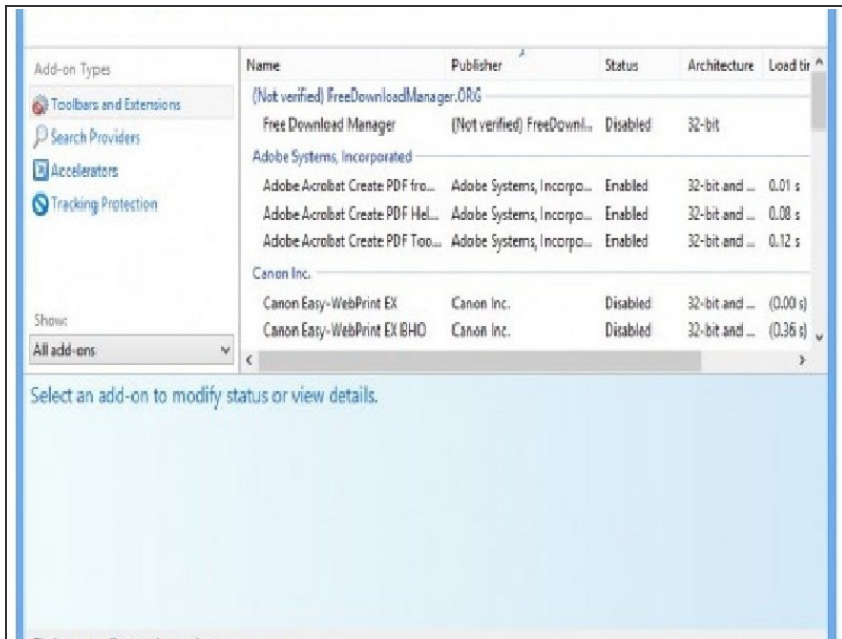


## Step 1 — Restore Advanced Application Settings



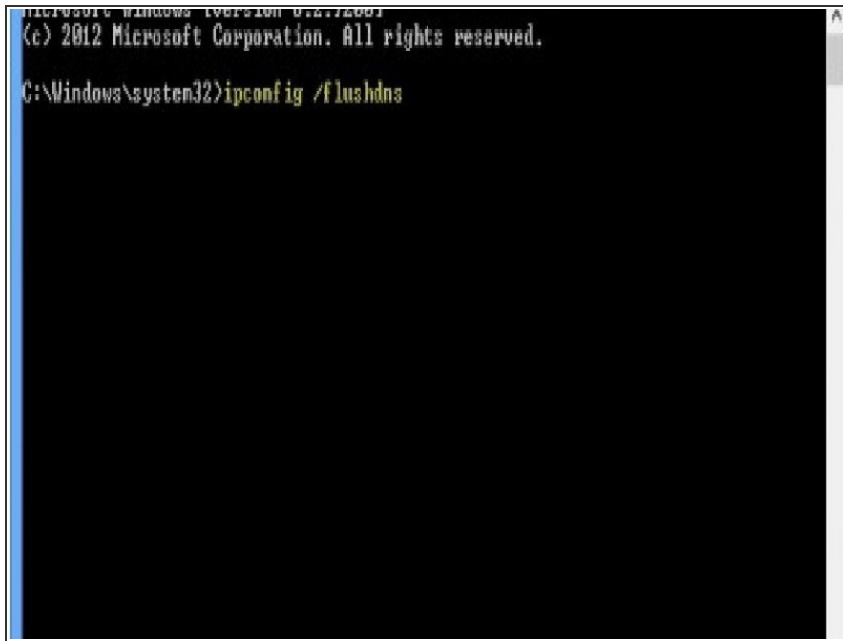
- Restore the advanced application settings including the ActiveX Filtering and dialog Pop-Up box settings. You'll be prompted to remove the personal configurations as well. Check-up that box in order to successfully restore all the settings.
- Close all other applications and open Internet Explorer.
- Click Tools -> Internet Options.
- Click Reset button after checking-up the "Delete personal settings" checkbox.

## Step 2 — Filter Malfunctioning Extensions



- Filter the malfunctioning extensions. Disable all the extensions which are not functioning properly. The list of all extensions is displayed in a dialog box after performing the steps given below:
- First show the menu bar by pressing the Alt key of your keyboard.
- Click Tools -> Manage Add-Ons.
- Set Show -> All add-ons.
- Filter unwanted extensions including those not working properly.

## Step 3 — Check Internet DNS Configs



```
Microsoft Windows [version 6.0.7260.1]
(c) 2012 Microsoft Corporation. All rights reserved.

C:\Windows\system32>ipconfig /flushdns
```

- The Internet DNS Configurations might have been changed. Incorrect DNS configurations are one of the reasons behind this issue.
- Press the Windows Key and X keys simultaneously, and then select the Command Prompt (Admin).
- Type below commands one by one and press ENTER at the end of each command: • `ipconfig /flushdns` • `ipconfig /registerdns` • `ipconfig /release`
- Exit Command Prompt and then reboot your PC.

## Step 4 — Use a Troubleshooter



- A Troubleshooter tool automatically detects and repairs the Internet Explorer crashes problem. All you've to do is-
- Download the tool called ZombieSoftFix.
- Install the program on your PC.
- Follow the on-screen instructions until your problem is completely fixed.

## Step 5 — Uninstall & Reinstall it again



- Some IE files can be corrupt. Uninstalling and reinstalling the same will fix the issue.
- Insert the Windows OS disc.
- Press Windows Key and X simultaneously.
- Click Programs and Features -> Turn Windows features on or off.
- Uninstall IE and reinstall it again. A system reboot requires.

To reassemble your device, follow these instructions in reverse order.