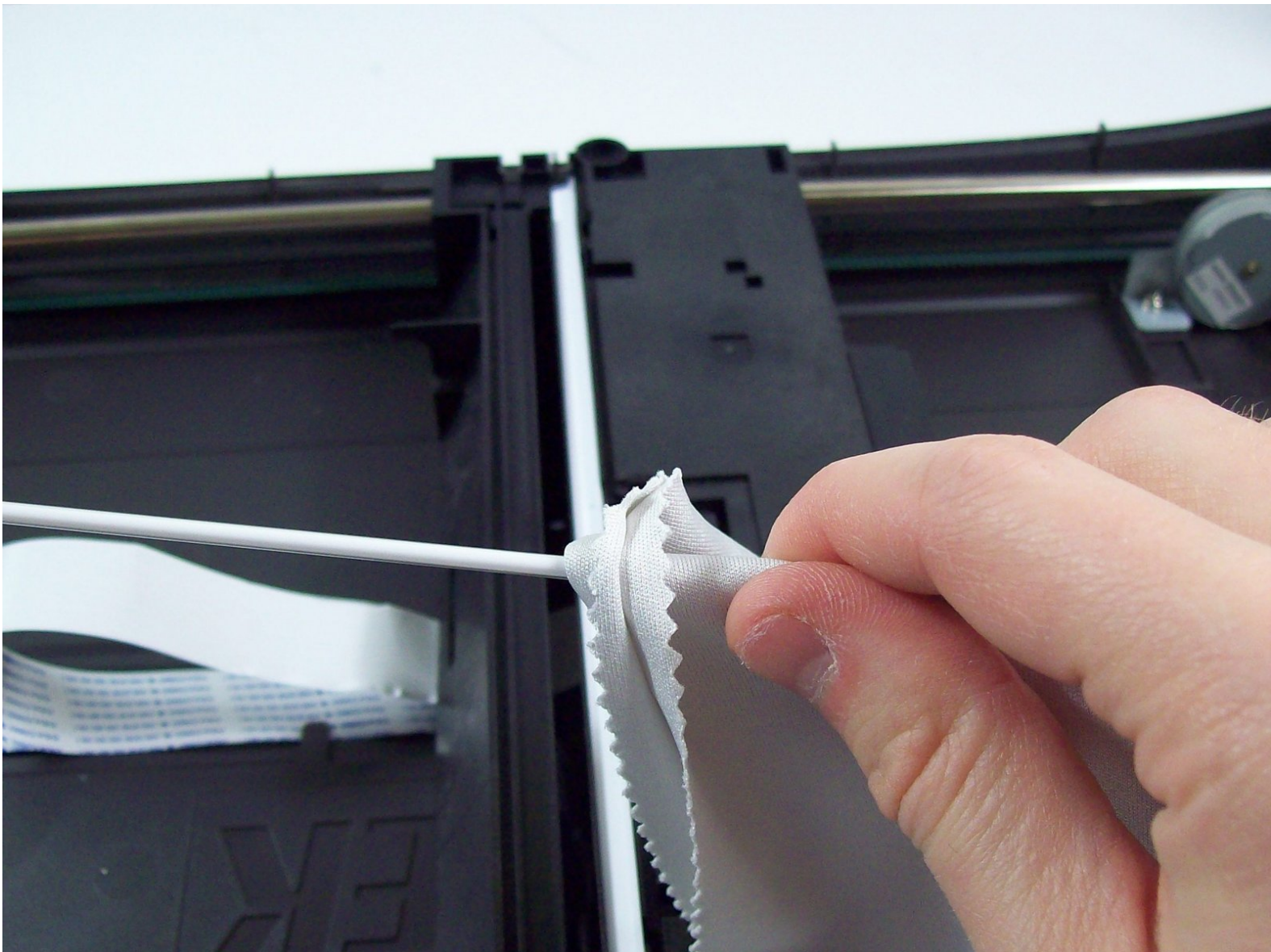




# Repairing Microtek ScanMaker 5900 Dirty Bulb

This guide shows you how to clean a dirty scanner bulb.

Written By: Taylor Nesheim



---

## INTRODUCTION

This guide shows the owner how to clean a dirty scanner bulb that could be causing bad scans to occur.

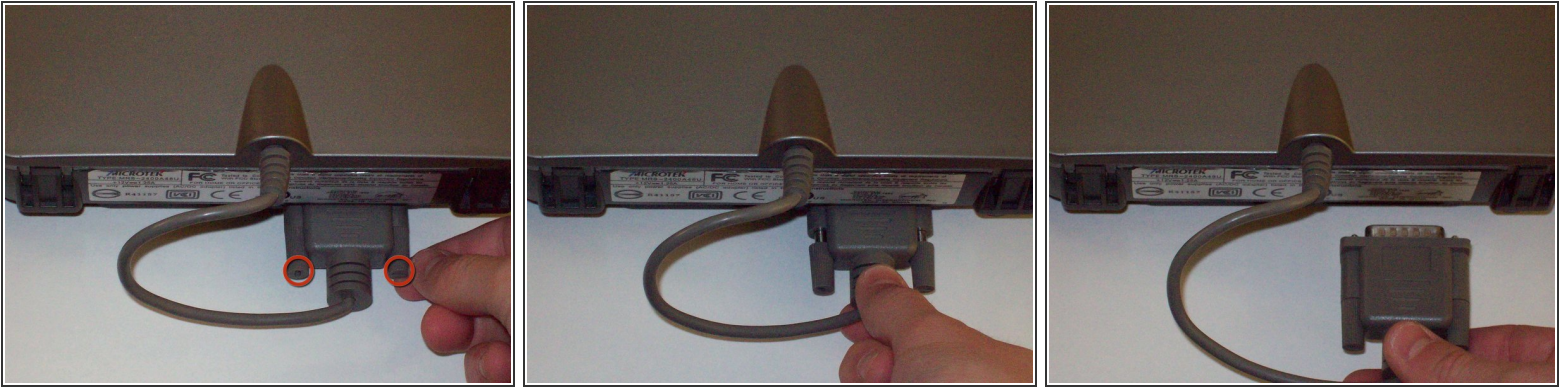
---



### TOOLS:

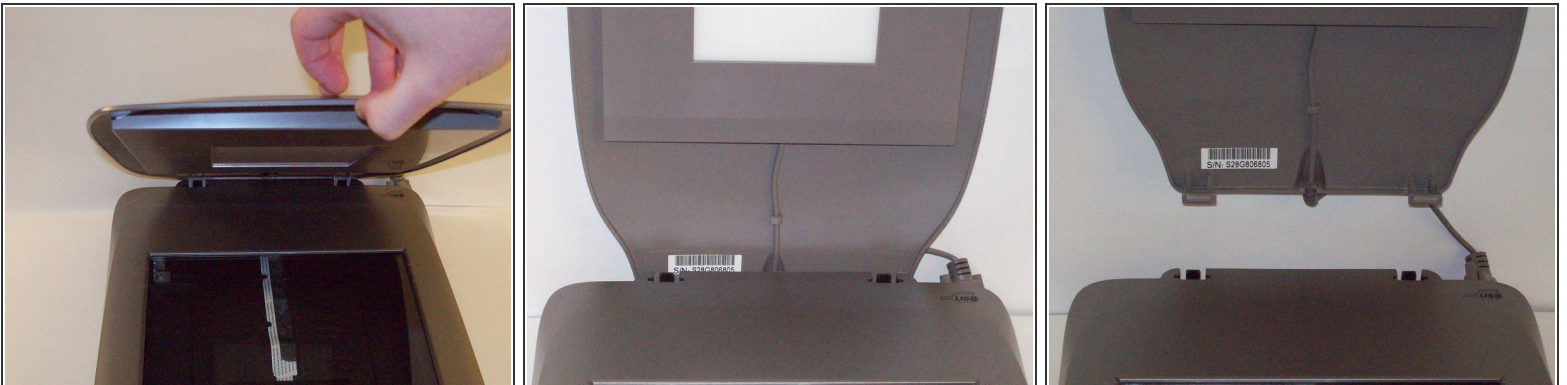
- [Tweezers](#) (1)
  - [iFixit Opening Tools](#) (1)
  - [Soft Cloth](#) (1)
-

## Step 1 — Remove serial port connection



- Loosen the screws on the serial port by turning them counter clockwise by hand.
- After loosening the screws, pull the serial port out.

## Step 2 — Remove Lid



- Lift lid to its vertical position.
- Pull lid straight up to remove it from the scanner.



### Step 3 — Detach plastic latches



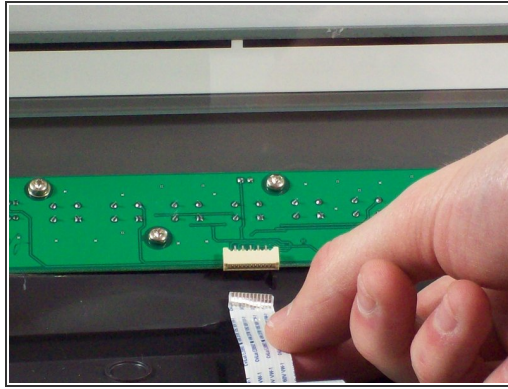
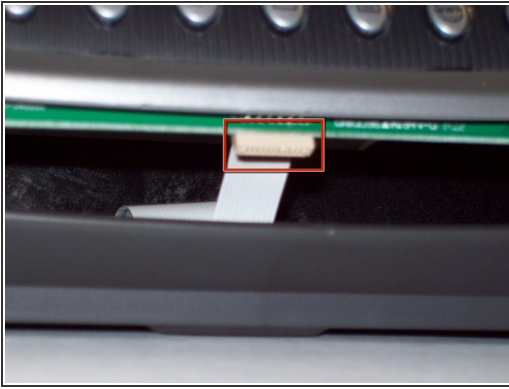
- Push the plastic opening tools into the crack between the top and the bottom of the chassis.


### Step 4 — Continue latch detachment



- After placing one plastic opening tool into the slit, slide other plastic opening tools along the slit to detach the top from the bottom of the chassis.
- Go all the way along the chassis until you can lift the upper lid.

## Step 5 — Fully remove the upper lid

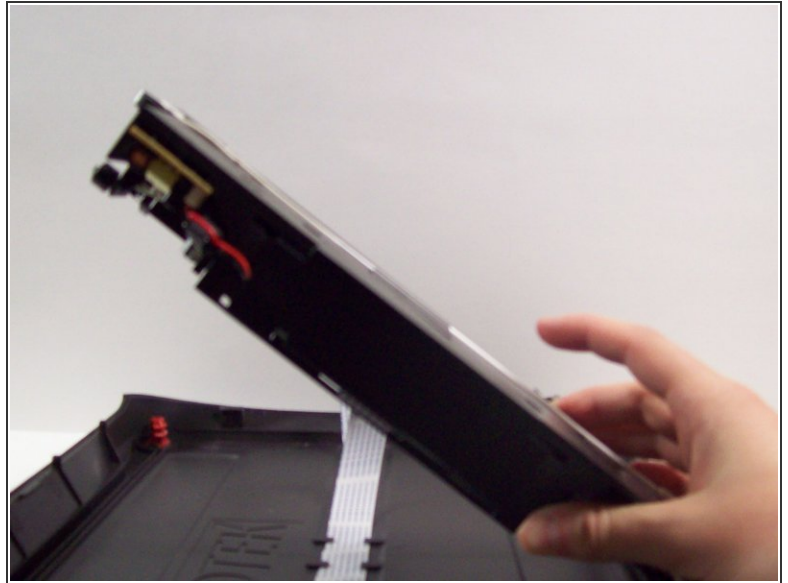
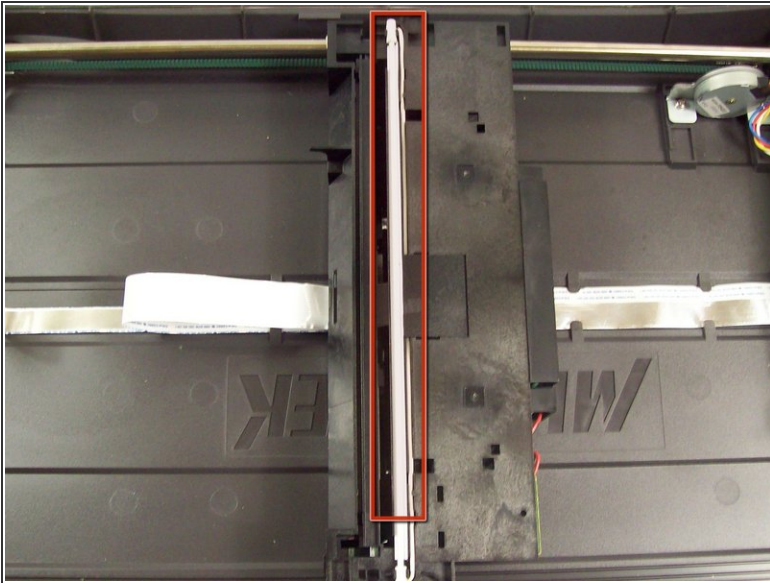


 Do not fully remove the lid until you remove the ribbon cable attached to the front of the upper lid.

- Do this by grabbing the upper lid from the sides and rotating it ninety degrees so it is perpendicular to the bottom lid.
- Grab the ribbon cable and gently pull it out of its slot with your fingers.
- The upper lid can now safely be removed from the bottom lid.

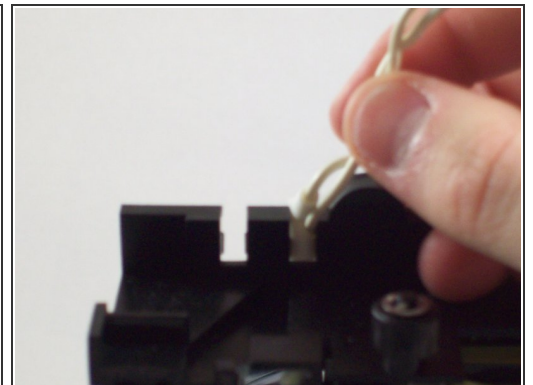
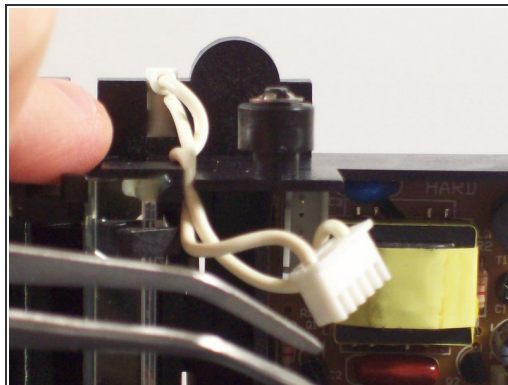
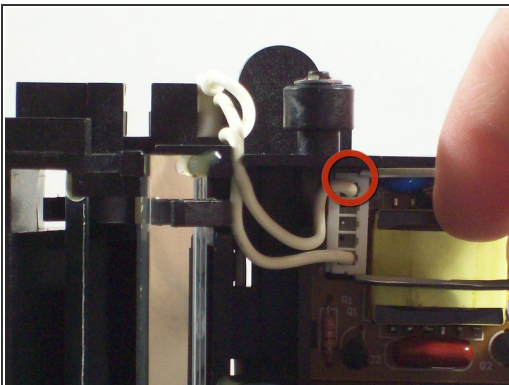


## Step 6 — Locate the bulb



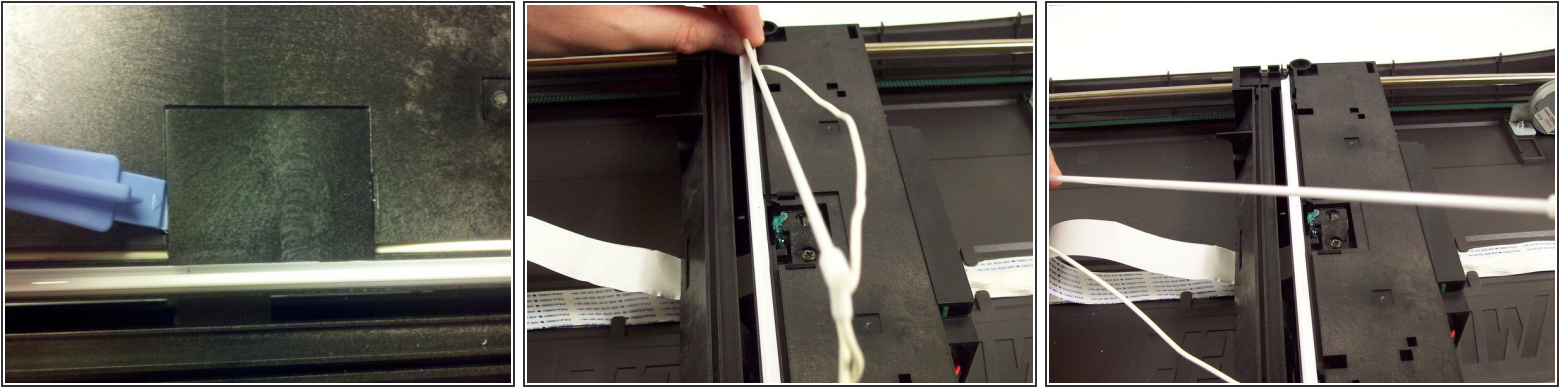
- After opening the chassis, you will see a white bulb spanning the width of the scanner.
- Lift up the black piece of plastic the bulb is attached to from the left hand side until it is perpendicular with the bottom lid of the scanner.

## Step 7 — Detach the bulb electrical connection



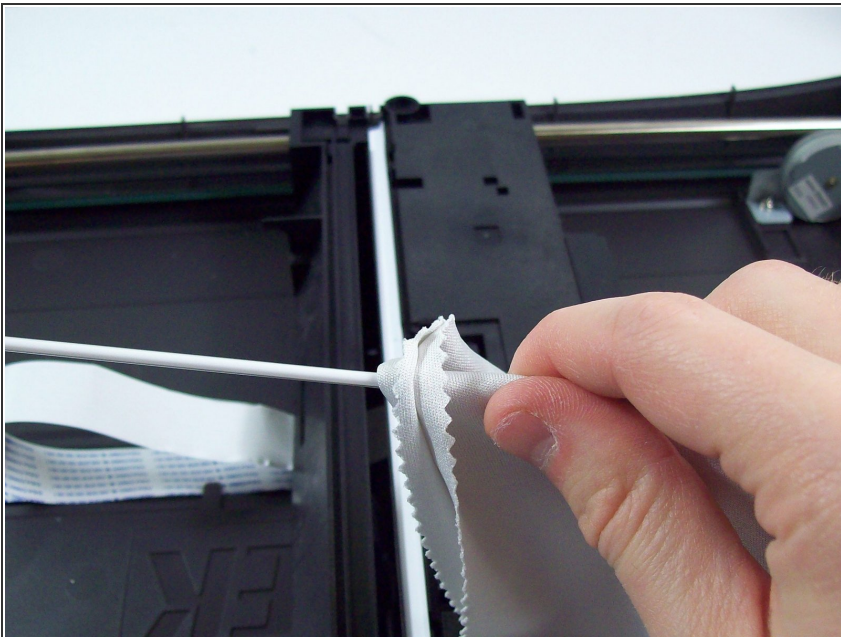
- Use tweezers to grab the plastic casing the wires are housed in.
- Gently jiggle the plastic back and forth until it can be pulled from its connection.
- Pull the wires out of the circuit board.
- Pull the wires up and out over the top of the plastic housing.

## Step 8 — Remove the bulb



- Place the plastic housing back into the bottom lid of the scanner.
- Remove the plastic panel by gently pushing on the plastic latches with a plastic opening tool.
- Pull the bulb and wire out of its plastic casing.
- The bulb is now free to be replaced.

## Step 9 — Clean bulb



- After opening the chassis and removing the bulb, simply take a cloth and wipe down the bulb.

To reassemble your device, follow these instructions in reverse order.

