



Repairing Monoprice Super Slim Optical USB Mouse with DPI Adjustment Scroll Wheel

The scroll wheel axle is the weakest part of this mouse and the component most likely to fail.

Written By: Jeff Snyder



INTRODUCTION

Use this guide to repair a broken scroll wheel. Be advised, the longevity of your repaired mouse will depend on the strength of the glue or epoxy used in the repair.

TOOLS:

- [Phillips #1 Screwdriver](#) (1)
 - [Crazy Glue](#) (1)
 - [Spudger](#) (1)
-

Step 1 — Repairing Monoprice Super Slim Optical USB Mouse with DPI Adjustment Scroll Wheel



- Slide the tab on the bottom of the mouse to release the top panel.

Step 2



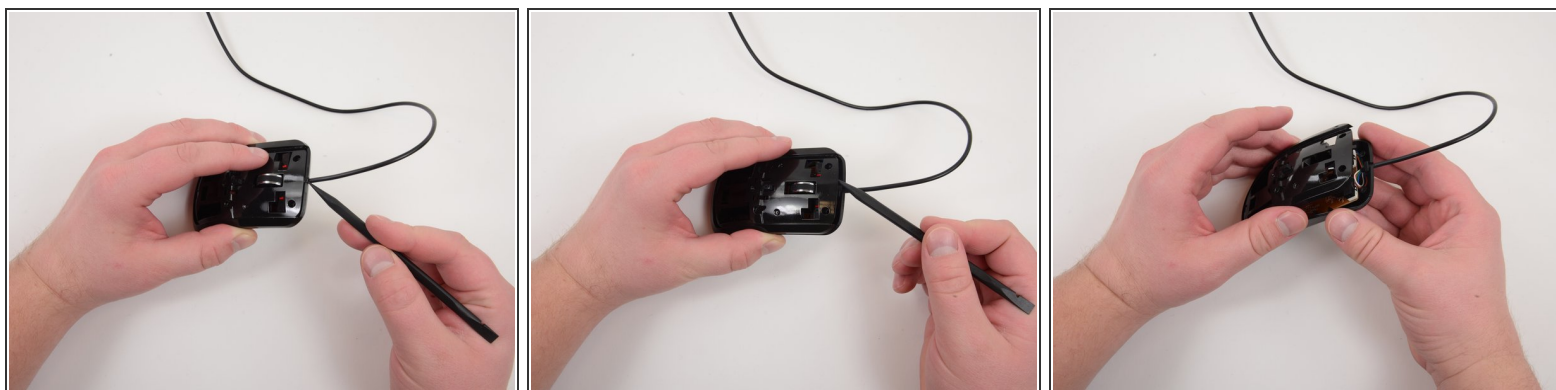
- Remove the top panel from the mouse.

Step 3



- Remove four 7mm Phillips #1 screws.

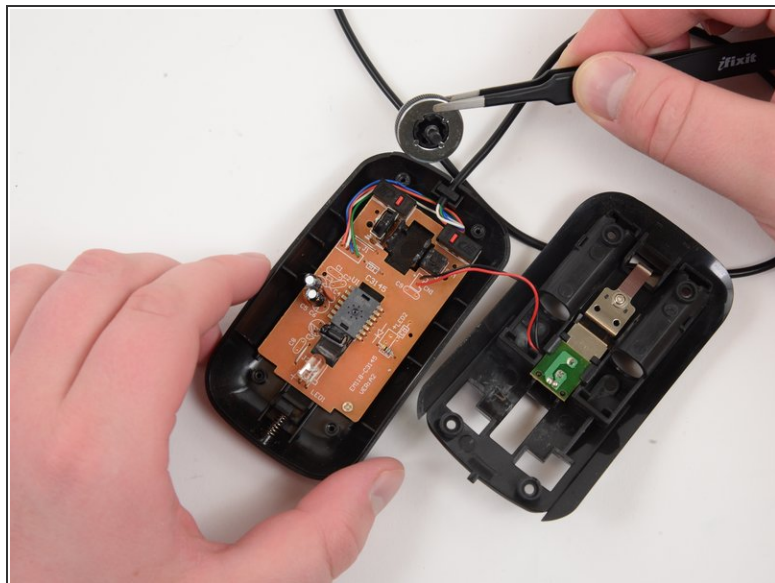
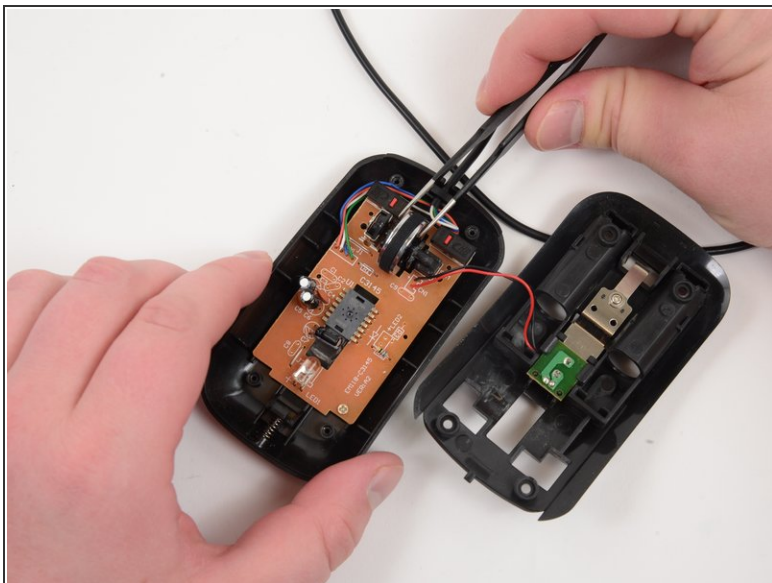
Step 4



- Use a spudger to pry the upper shell from the mouse at the cord entrance.

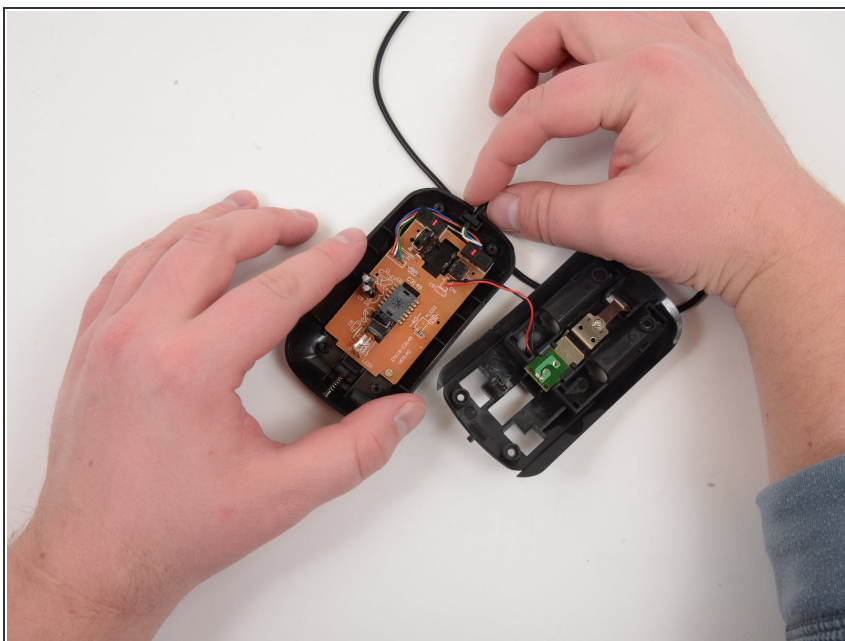
⚠ Move slowly. The upper case is connected to the mouse with delicate wires.

Step 5



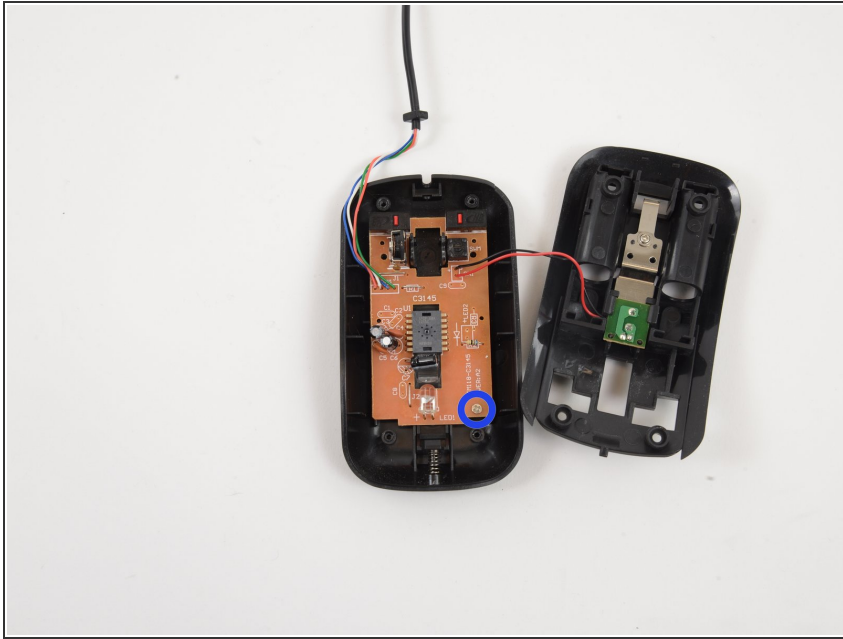
- Lift the scroll wheel out of the mouse.

Step 6



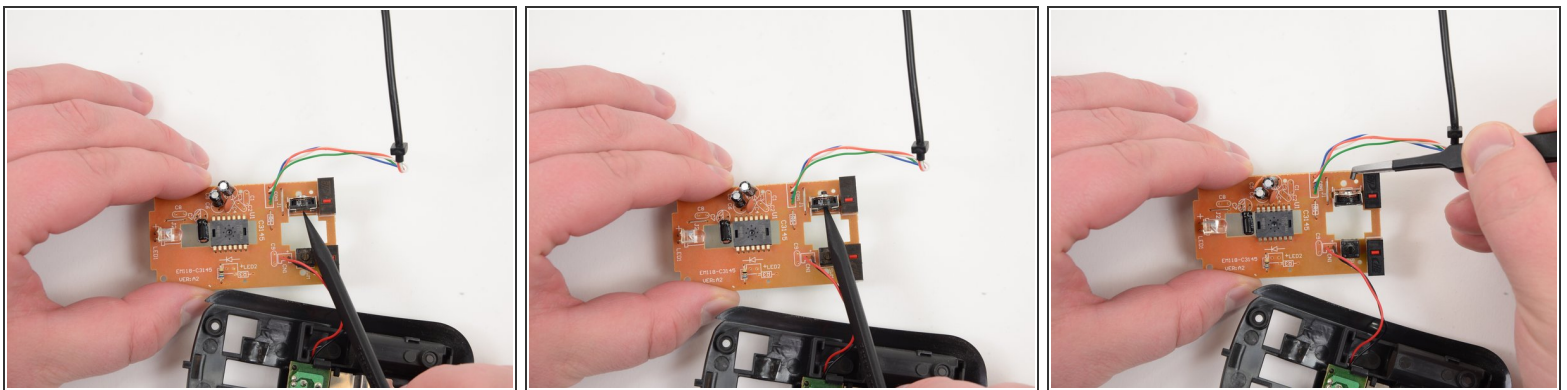
- Wiggle the USB cord free of the mouse.
- Resist the temptation to yank the cord free. The wires are very delicate and soldered connections are weak

Step 7



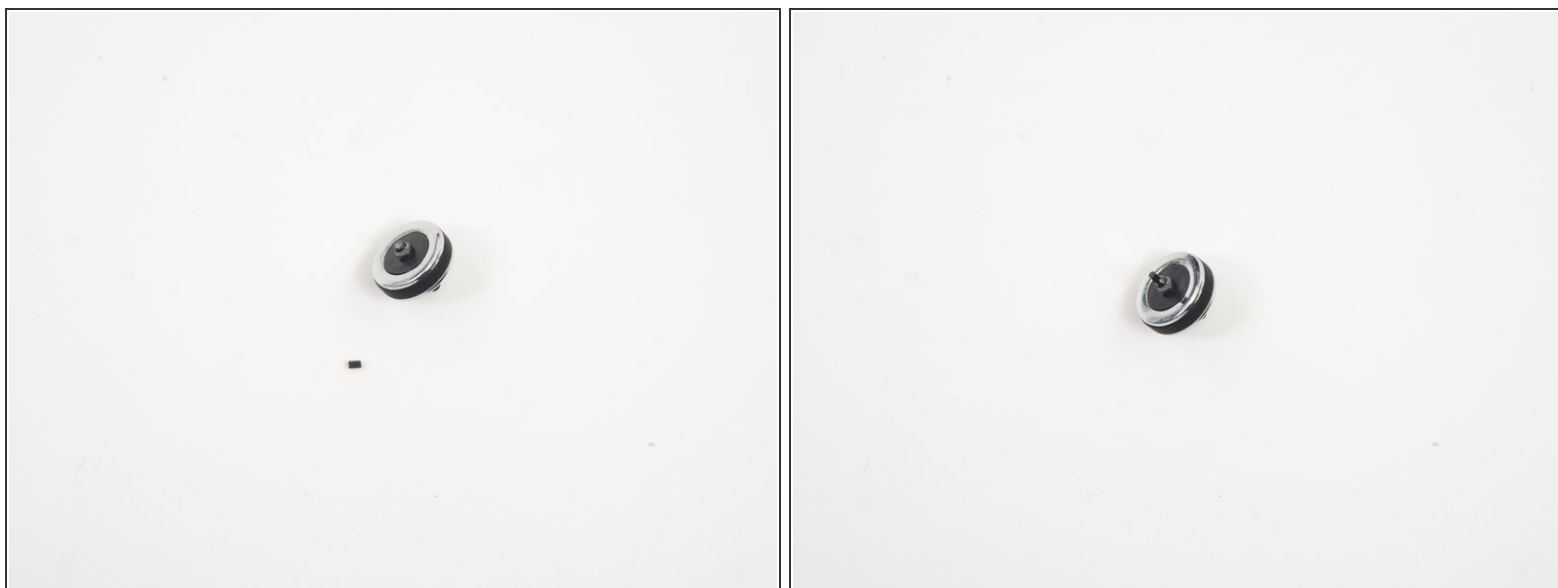
- Remove one 3mm Phillips #1 screw.
- ❗ The quantity and location of screws holding the board to the mouse depends on the manufacture date of this mouse. All screws should be easy to find.

Step 8




- Push the broken axle piece out of the socket.

Step 9



- Glue broken axle piece back onto the scroll wheel.

 This repair will last only as long as your glue or epoxy holds. The axle will re-break with weak glue and heavy use. My axle survived several heavy use days, just long enough for Monoprice to send me a new mouse.

To reassemble your device, follow these instructions in reverse order.