



# Repairing Nokia Lumia 620 On / Off Switch

repair the on/off switch

Written By: symoN



## INTRODUCTION

This is my first repair guide.

The on/off switch broke down so I searched for a way to fix it. Here is how I did it.

I can't guarantee that this guide will help you, but I hope so. Hope you can do it!



### TOOLS:

- [T5 Torx Screwdriver](#) (1)



### PARTS:

- [a small piece of plastic](#) (1)

## Step 1 — Repairing Nokia Lumia 620 On / Off Switch



- open the cover
- remove battery
- remove sim tray

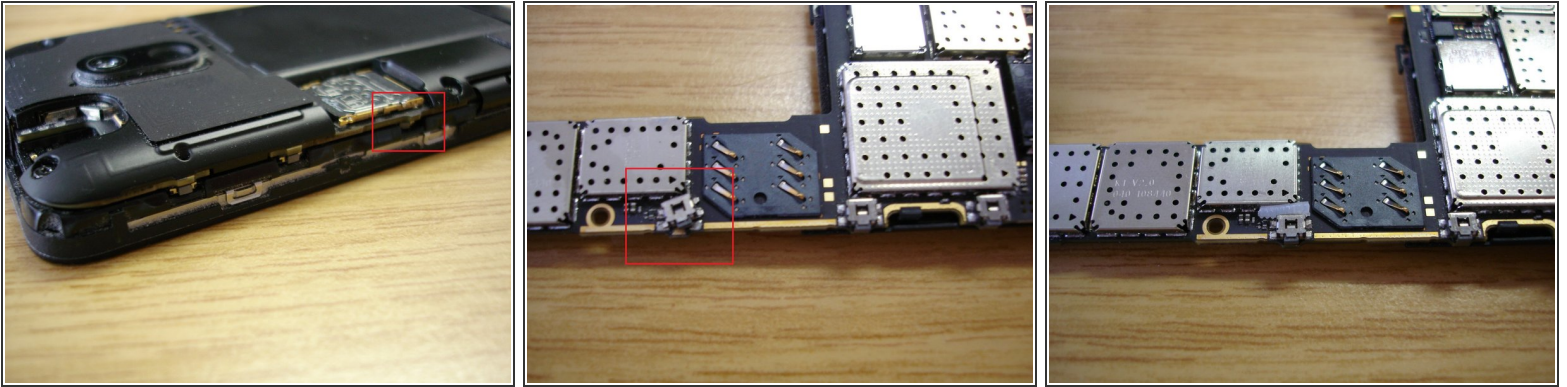
## Step 2



- remove screws
- disconnect connectors
- remove main board



## Step 3



- first picture: the problem with the switch
- second picture: you see clearly that the switch isn't in the right position
- so I added a small piece of plastic to prevent the switch to move back. That worked for me
- **Note:** make sure that the plastic is not too big. You have to make sure that the sim tray fits in again!

To reassemble your device, follow these instructions in reverse order.