



# Repairing PS4 Bluetooth Antenna from Defect or System fell

Conditions permitting this guide can show you how to fix a Broken Bluetooth antenna for the PS4 from either a defect at the solder point or breakage after the system has fallen.

Written By: bdcallen69



## INTRODUCTION

My system had fallen from a shelf and then the front corner where the Antenna sits was damaged. It caused a wire to break at the solder point on the antenna. It caused input lag and you had to be right in-front of the system. Literally direct line of sight. The controller would work for a minute then lag out. The X button wouldn't work or anything. How I fixed it could also fix a factory defect if the antenna wasn't put together right.



### TOOLS:

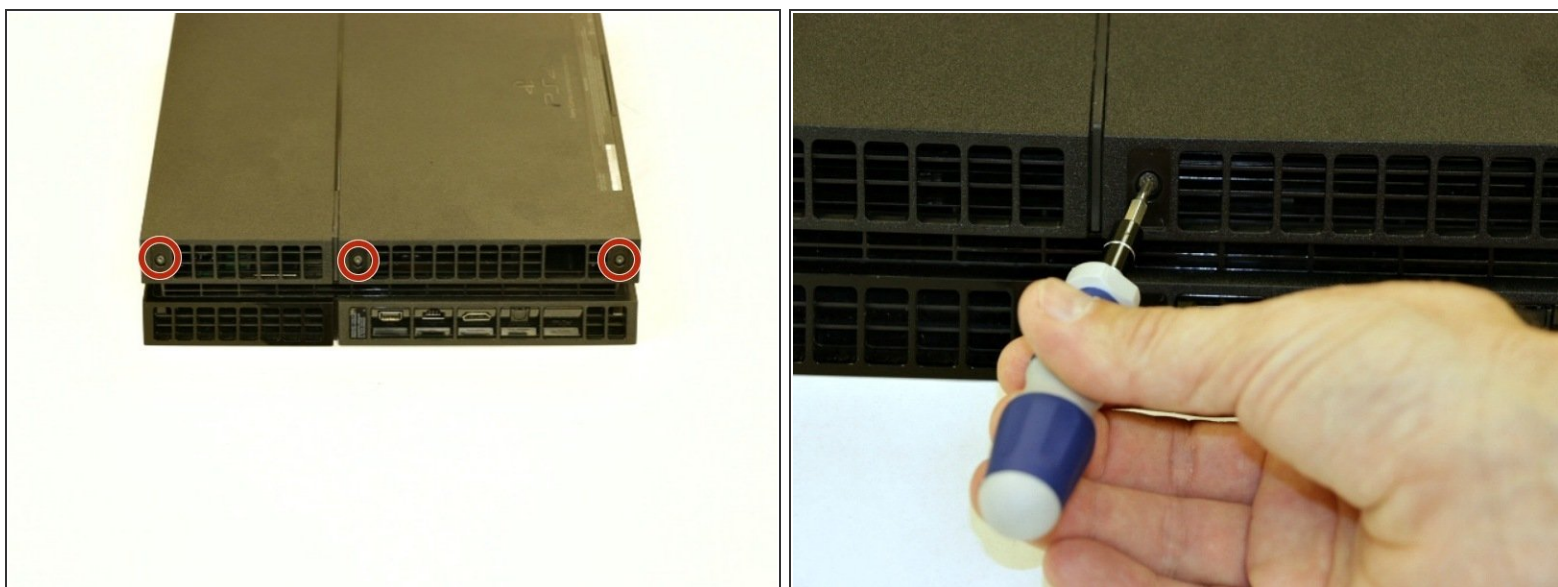
- [TR9 Torx Security Screwdriver](#) (1)
  - [Phillips #1 Screwdriver](#) (1)
  - [Metal Probe](#) (1)
  - [Tweezers](#) (1)
  - [Soldering Iron](#) (1)
  - [Solder](#) (1)
-

## Step 1 — Remove Stickers



- Using a dental pick or something similar, remove the three stickers on the bottom casing.

## Step 2 — Remove Bottom Case Screws



- Remove the three black screws in the bottom case using a T9 security torx bit.

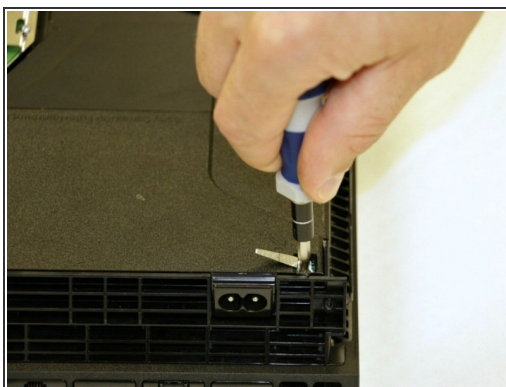
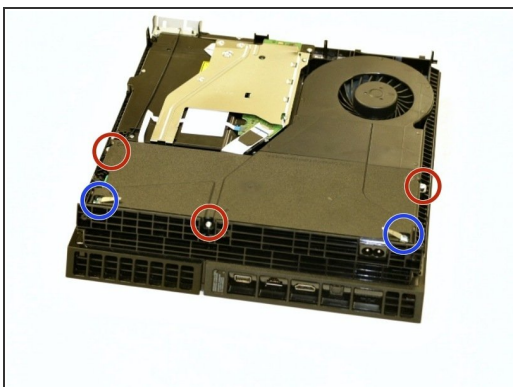


### Step 3 — Remove Bottom Case



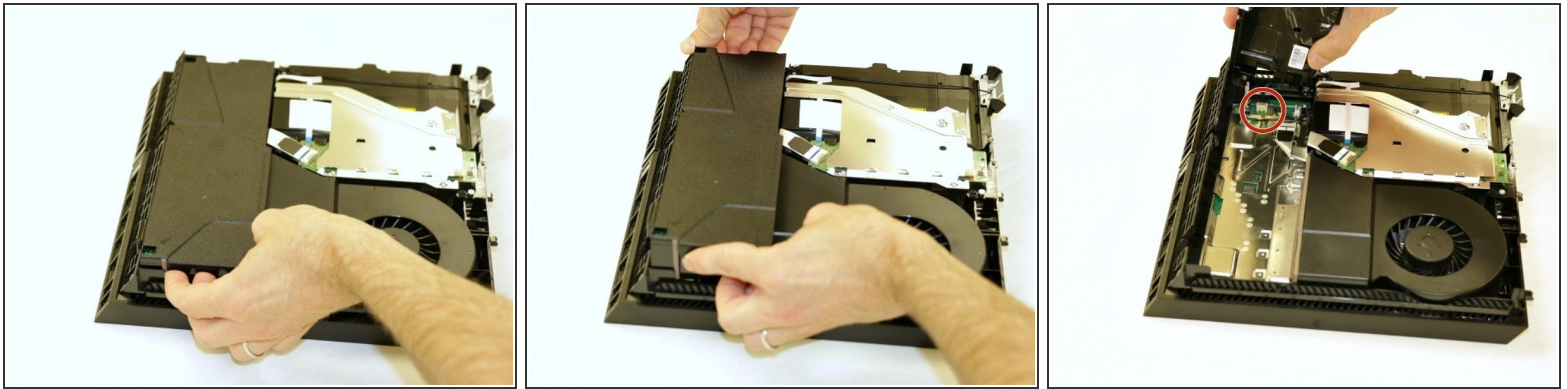
- Pull up on one side of the case, then the other then slide the case back. It will then be free from the rest of the console.

### Step 4 — Remove Power Supply Screws



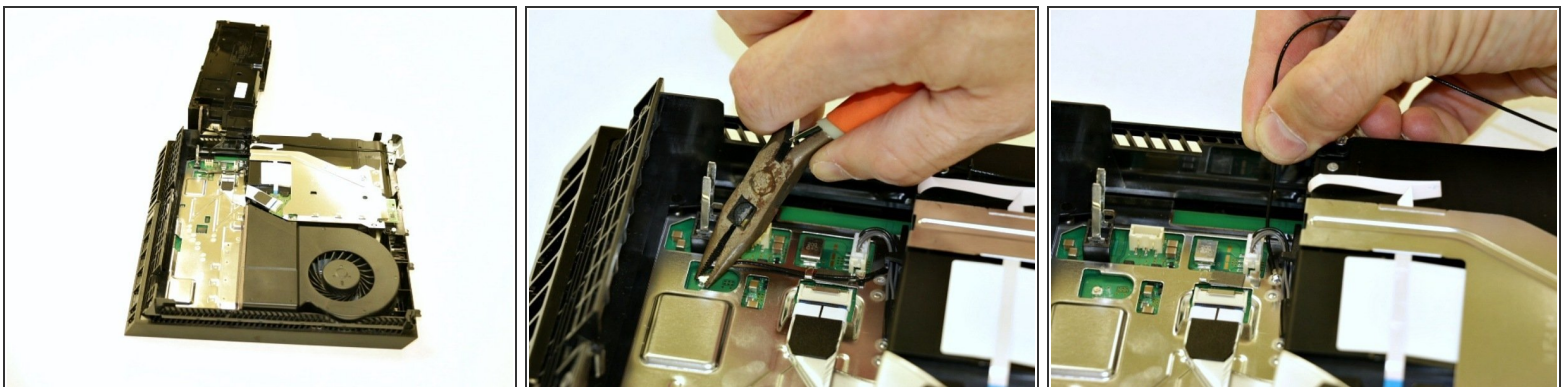
- Remove the five screws that secure the power supply. There are two PH1 and three T9 torx security screws.

## Step 5 — Remove Power Supply



- First pull up on one side of the power supply, then pull up on the other side. Gently but firmly wiggle it out.
- Be careful as you pull up on the power supply as it is still connected with a connector from the motherboard.

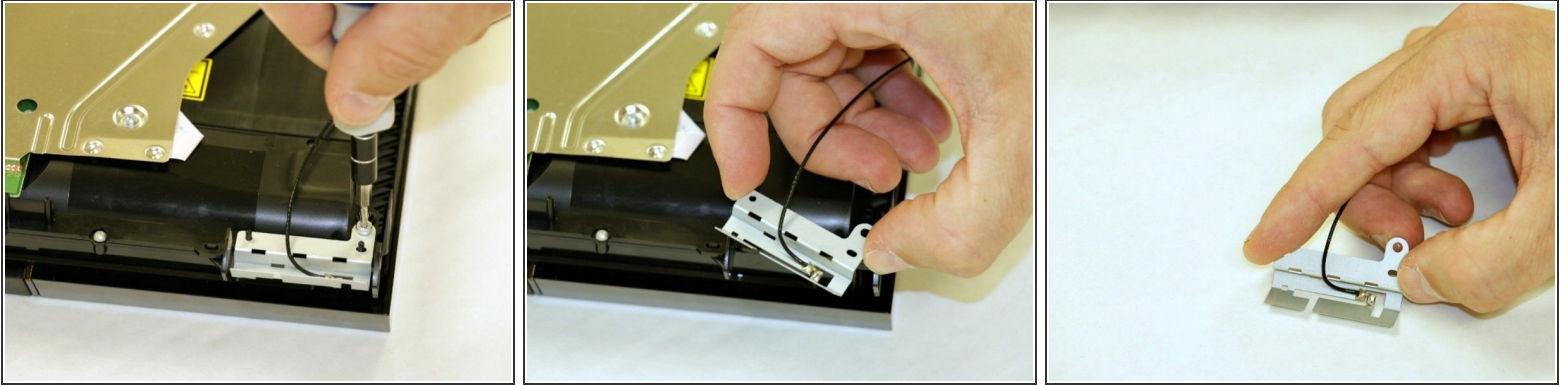
## Step 6 — Disconnect WiFi Antenna



- The power supply can be lifted out and rotated down and set on the workbench.
  - Be very careful not to pull on the power supply as it will still be connected to the motherboard.
- Use ESD-safe tweezers to carefully disconnect the wi-fi antenna by pulling it straight up.
  - Be careful not to apply too much force on the WiFi connector as it can break off.
- After the WiFi cable is disconnected, de-route the cable from the two clips and under the optical drive cable.

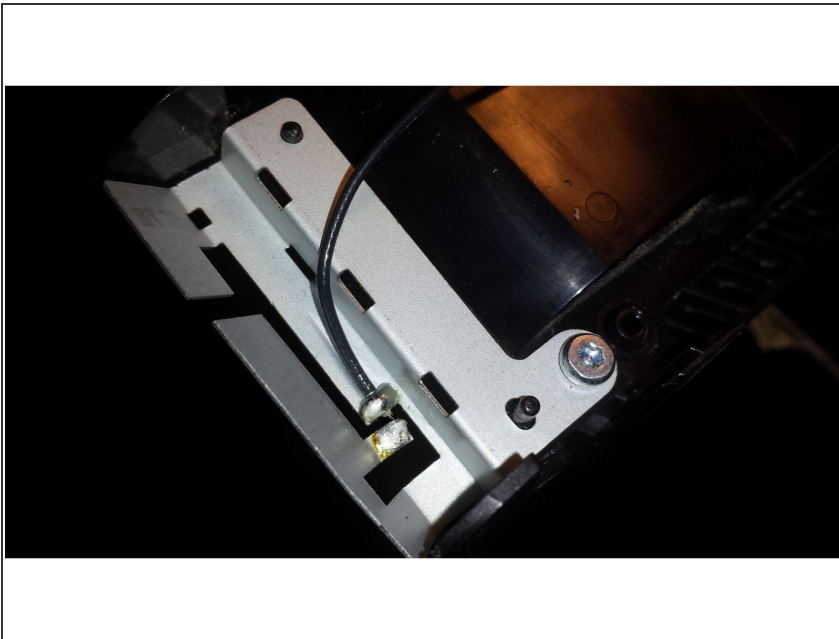


## Step 7 — Remove WiFi Screw & WiFi Antenna



- Remove the one torx T9 security screw from the WiFi antenna located at the front of the console.
- The WiFi Antenna can now be fully removed from the PS4.

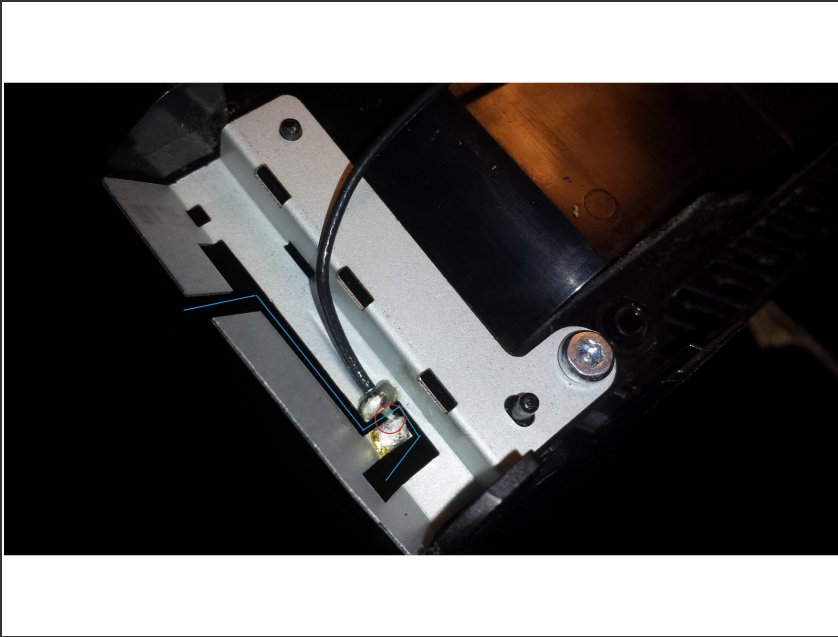
## Step 8 — What is Wrong?



- As you can see there are 2 solder points . the wire must run through the first point to the second point. But when the system fell it broke that connection and Antenna got bent. If

at factory the solder points were not correct it will cause the same lag issue with controller and WiFi.

## Step 9 — Solder it back



- This is the easy part. Remove the antenna. Move the wire inbetween the two solder points so it is connecting to the second point. Once there take your soldering Iron and heat up the solder and drag it over the wire to make the connection.

## Step 10



- Just remember to leave the gap here. Do not bend the antenna to make the points touch your self. The gap that runs through it is there by design and changing that has adverse effects on controller and WiFi . But its that easy. My PS4 now works fine with controller and WiFi . No need for further tear-down and extra parts. Put bottom on. GTGo

To reassemble your device, follow these instructions in reverse order.