



Repairing Pioneer R1 Speaker Cables

This guide will walk you through the steps necessary to reattach your R1's speakers to the motherboard.

Written By: Christopher Rosario



INTRODUCTION

This guide will demonstrate how to access the R1's speakers and reattach them to the motherboard.



TOOLS:

- [Spudger](#) (1)
 - [Precision Soldering Iron](#) (1)
-

Step 1 — Repairing Pioneer R1 Speaker Cables



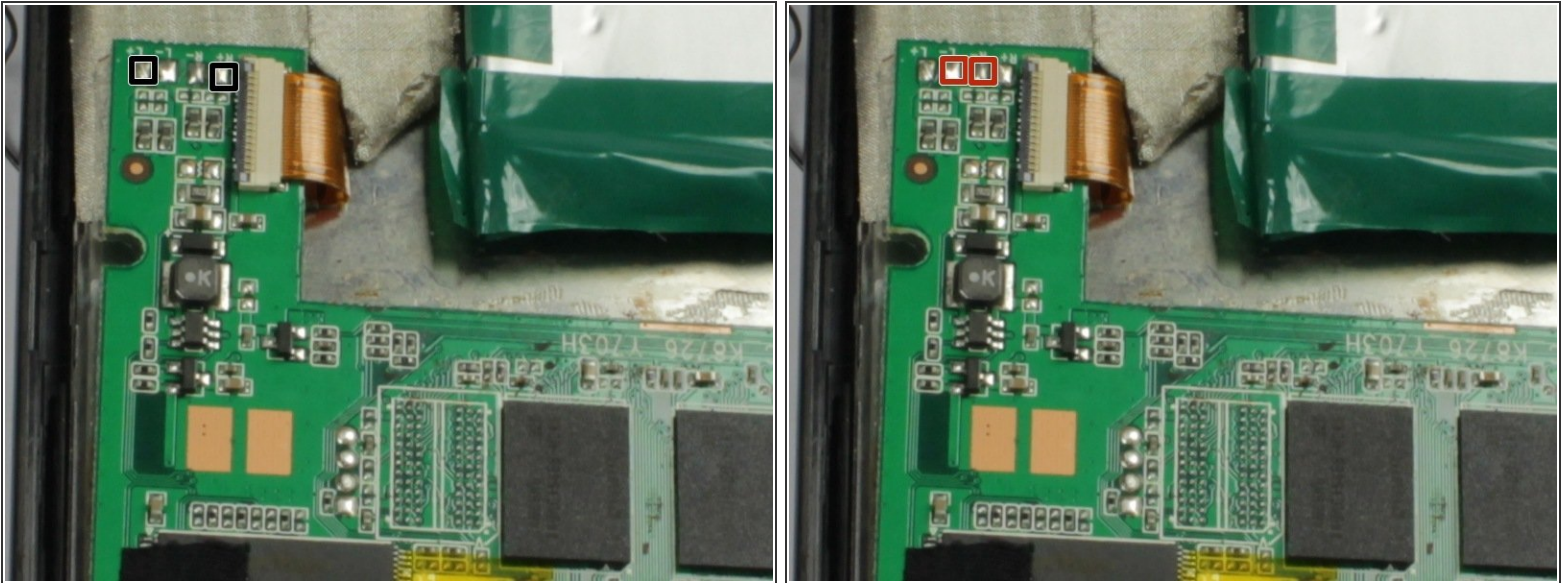
- Insert your plastic spudger into the opening near the HDMI port.
 - Gently pry the back cover of the R1 from the front by using the spudger along the edges.
- ⚠ Do not pull the back cover straight off the R1. You may further damage the cables connecting the speakers to the motherboard.


Step 2



- Lay the R1 flat like an open book.
- ⓘ This will prevent further damage to the cables connecting the speakers to the motherboard.

Step 3



- Solder the black cable of the left speaker to the nodule marked L+ on the motherboard.
 Do not allow solder from one nodule to touch another nodule. This will cause the speakers to malfunction.
- Solder the black cable of the Right speaker to the nodule marked R+ on the motherboard.
- Solder the red cable of the left speaker to the nodule marked L- on the motherboard.
- Solder the red cable of the right speaker to the nodule marked R- on the motherboard.

To reassemble your device, follow these instructions in reverse order.