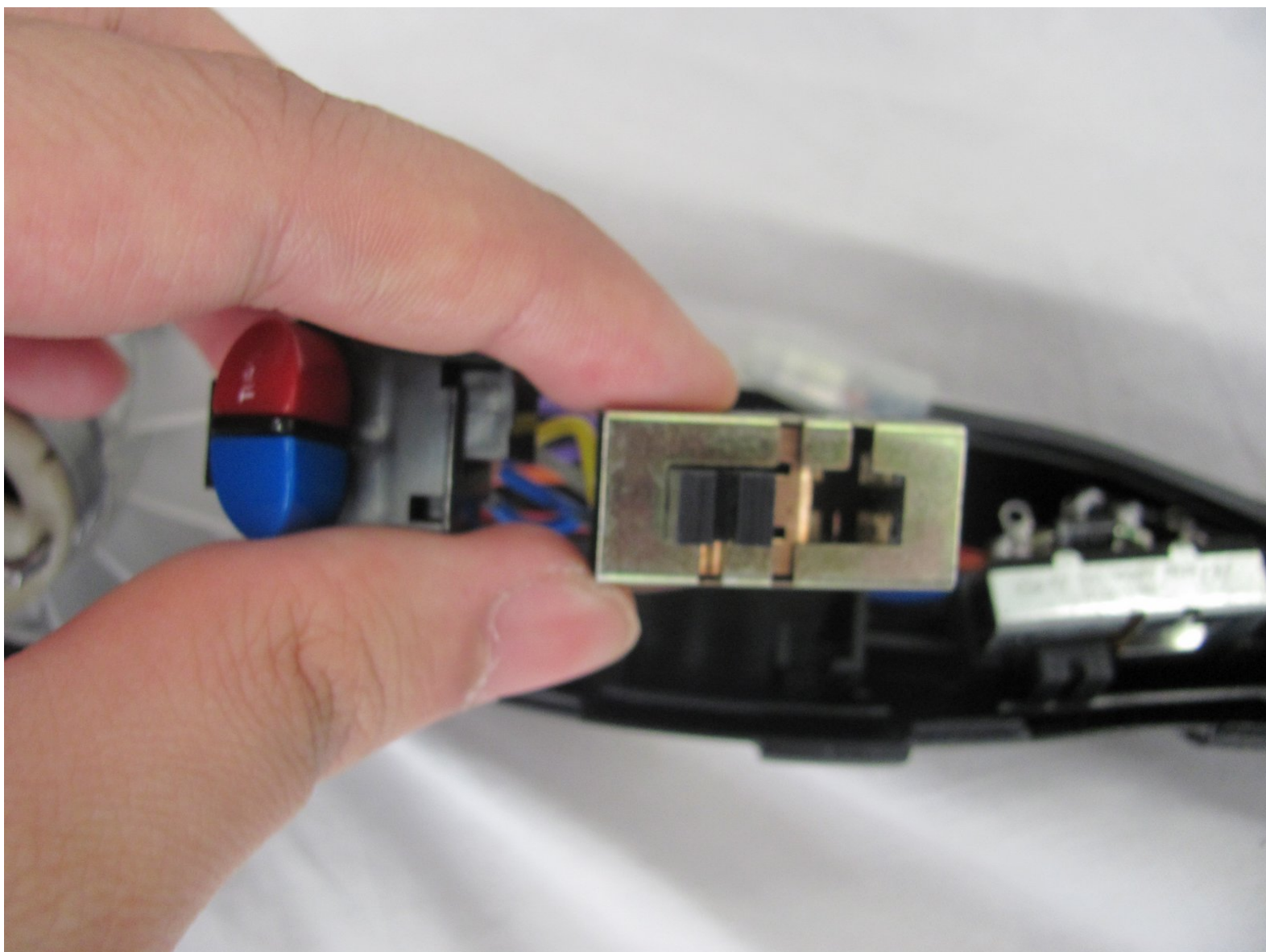




Repairing Revlon 473 Switch

Test the switch to make sure it is still functioning properly.

Written By: Jessica Leyva





TOOLS:

- [Digital Multimeter](#) (1)
- [Phillips #2 Screwdriver](#) (1)



PARTS:

- [Hairdryer Switch](#) (1)

Step 1 — Shell



⚠ Before disassembly, make sure that the device is unplugged.

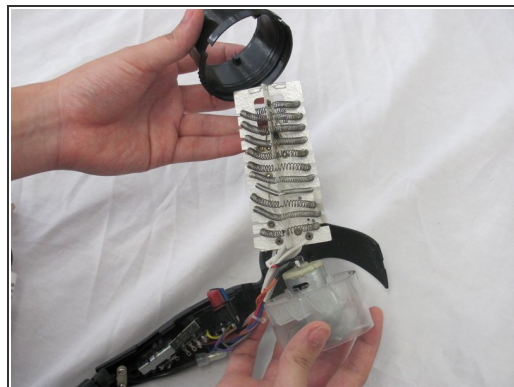
- Unscrew the two 17.83 mm black screws located on the handle.

Step 2



- Separate the shell from the main component.
- Make sure that the each piece is free from debris.

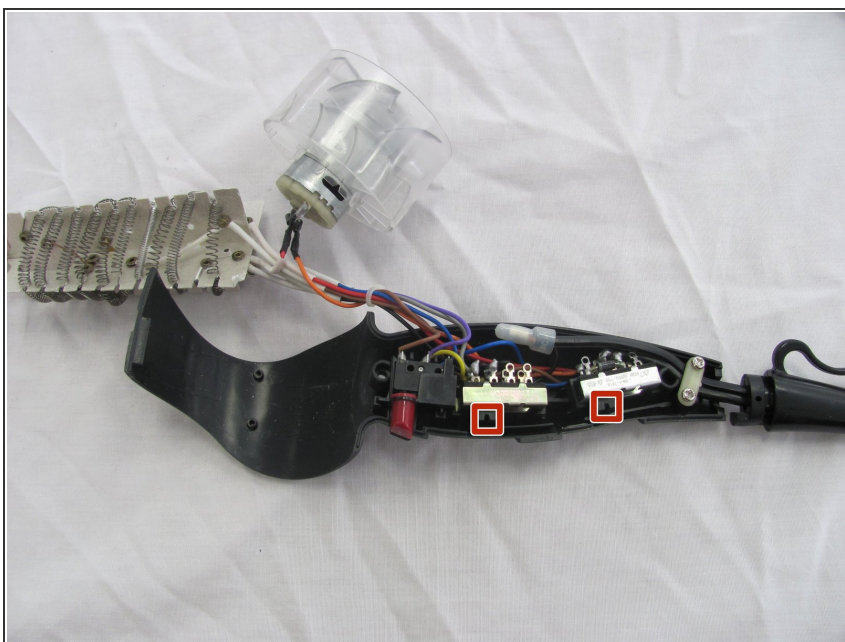
Step 3



- Continue to pull the components apart.

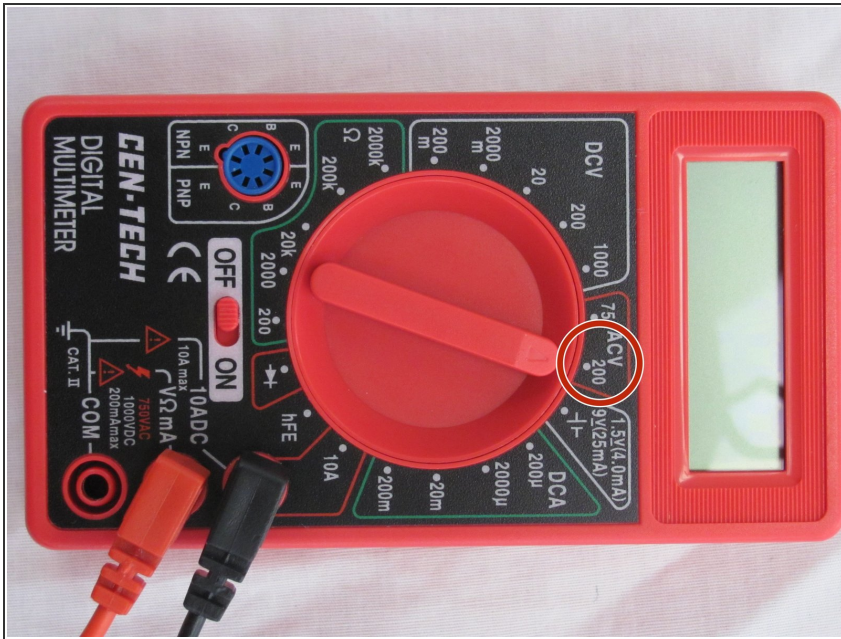
i For reassembly, put the silver encasing on before the the black cover.

Step 4 — Switch



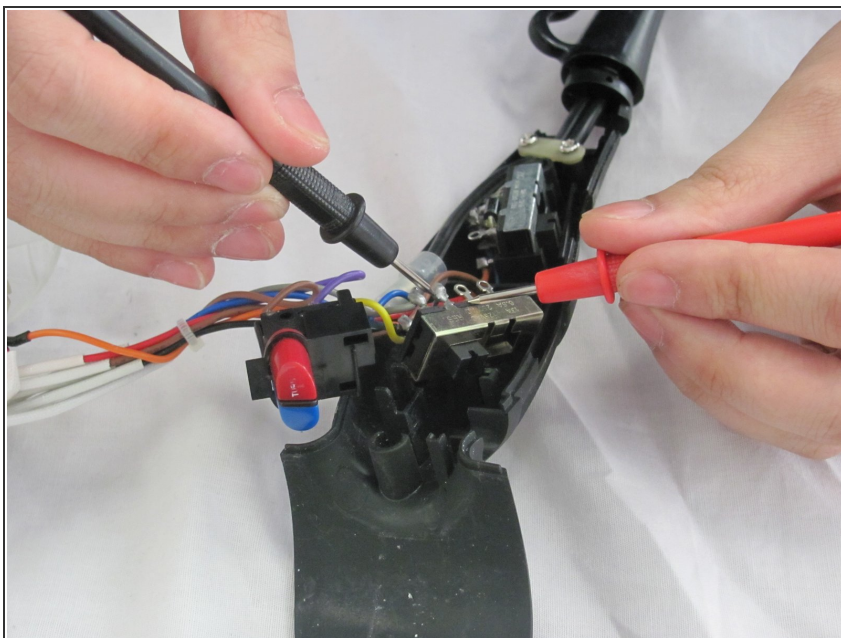
- Locate the switches in the handle of the device.

Step 5



- Set the multimeter to 200 ACV.

Step 6



- Bring the probes toward each switch to test for continuity.
- If the numbers on the multimeter continue to change, the circuit is closed and the switches are functioning.
- If the meter stays at a finite number, the circuit is open and the switch needs to be replaced.
- ❗ To replace faulty switch, cut the wires and solder the wires back on to the new switch.

To reassemble your device, follow these instructions in reverse order.